

John Deere 244L and 324L Compact 4WD Loader Repair Technical Manual - TM14322X19

244L and 324L Compact 4WD Loader Repair

(PIN: 1LU244LX__B047716—;
PIN: 1LU324L___B047716—)



JOHN HARE



COLLECTION

REPAIR TECHNICAL MANUAL 244L and 324L Compact 4WD Loader

PIN: 1LU244LX__B047716—;
PIN: 1LU324L___B047716—

TM14322X19 01DEC18 (ENGLISH)



Worldwide Construction and
Forestry Division

Covers: 244L,1LU244LX__,B047716,344L,1LU324L__,B047716

Type: Service Manual

Language: English

Pages: 246

Format: PDF

Features: Bookmarked, searchable, printable

Compatibility: Windows/Mac/Tablet/Mobile

This service manual contains important information for the maintenance, troubleshooting and servicing of the **John Deere 244L and 324L Compact 4WD Loader Repair Technical Manual - TM14322X19**

In this manual you will find detailed specifications, illustrations, schematics, diagrams and step-by-step procedures to properly service and diagnose the machine to the manufacturer's standards.

Contents:

- General Information
- Specifications
- Serial Number Location
- Engine Specifications
- Engine Diagnostics
- Engine Tests and Adjustments
- Engine Repair
- Power Train
- Transmission
- Axles
- Differential
- PTO
- Hydraulic System
- Electrical System
- Electrical Tests and Diagnostics
- Wiring Diagram / Schematic
- Ignition and Charging
- Steering
- Brakes
- Wheels
- Operator's Platform
- Body Panels
- Disassembly and Assembly
- Diagnostics, Tests and Adjustments
- Troubleshooting
- and much more...

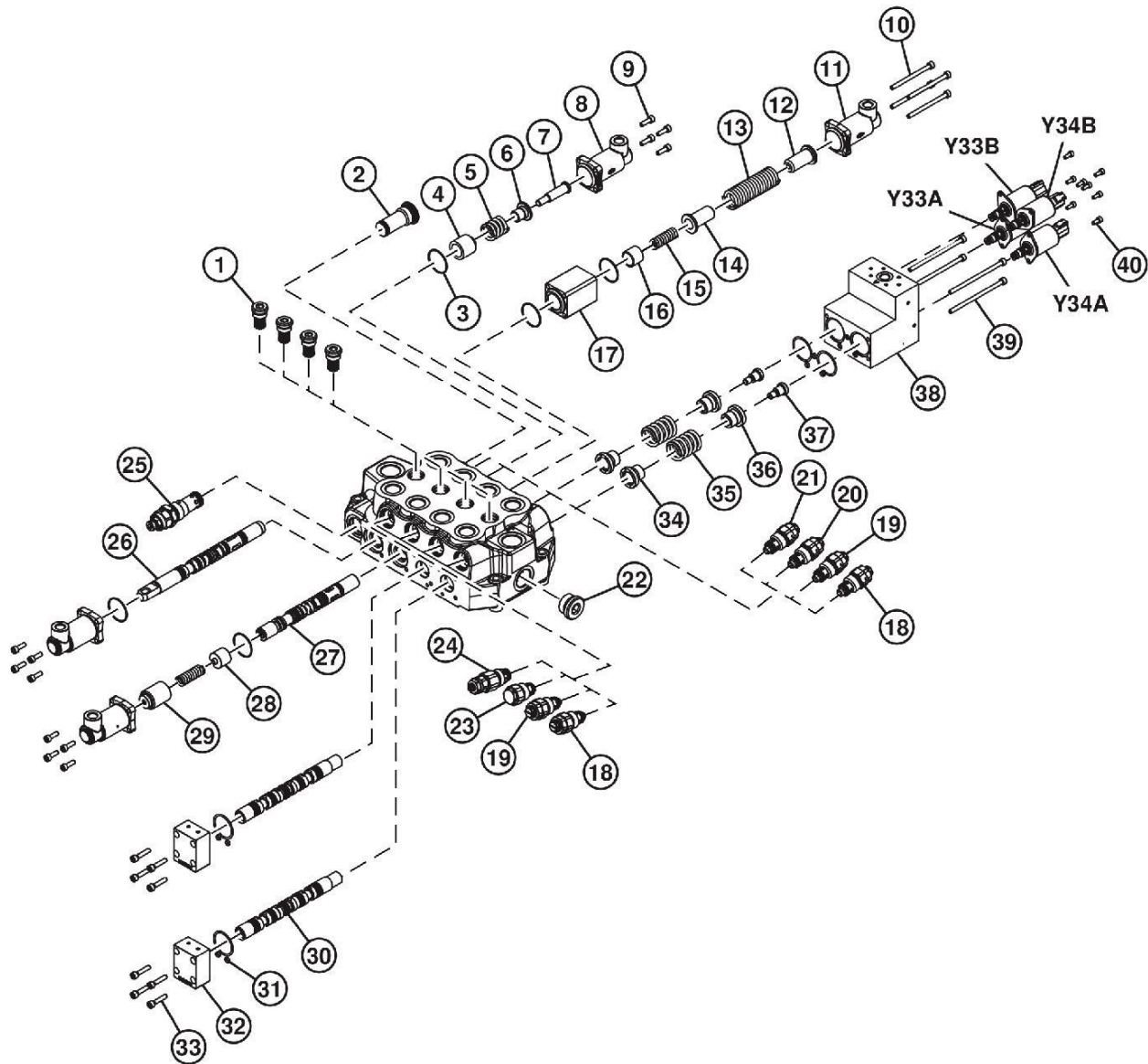
Please note this manual is in **downloadable PDF format only**. If you have any questions about this product or would like to request sample pages, please contact us and reference the product name or SKU.

Hydraulic System

31-O-Ring (4 used)
 32-Auxiliary Spool End Cap
 33-Cap Screw (4 used)
 34-Spring Retainer

35-Spring
 36-Spring Retainer
 37-Spool Plug
 38-Auxiliary End Cap

39-Cap Screw (4 used)
 40-Cap Screw (4 used)
 Y33A-Third Function Solenoid
 Y33B-Third Function Solenoid



TX1266860

TX1266860-UN: Loader Control Valve (4-spool)

LEGEND:

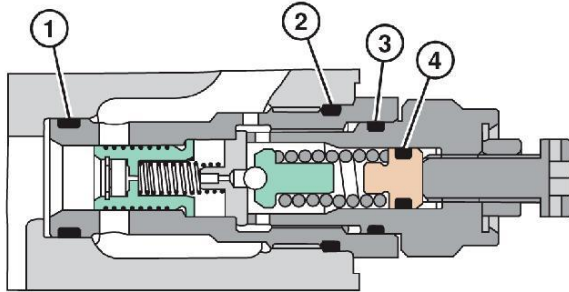
1-Load Holding Valve (4 used)
 2-Plug
 3-O-Ring (9 used)
 4-Spring Retainer
 5-Spring
 6-Spring Retainer
 7-Spool Plug
 8-Bucket Spool End Cap (2 used)
 9-Cap Screw (12 used)

10-Cap Screw (4 used)
 11-Boom Spool End Cap (2 used)
 12-Spring Retainer
 13-Spring
 14-Spring Retainer
 15-Spring (2 used)
 16-Spring Retainer
 17-Spacer

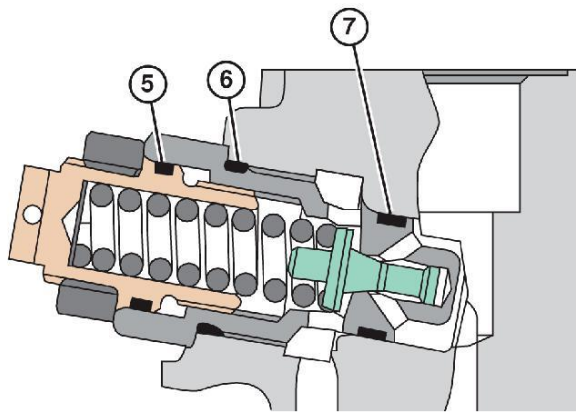
18-Fourth Function Circuit Relief Valve (2 used)
 19-Third Function Circuit Relief Valve (2 used)
 20-Boom Raise Circuit Relief Valve
 21-Bucket Curl Circuit Relief Valve
 22-Plug
 23-Boom Lower Anticavitation Valve
 24-Bucket Dump Circuit Relief Valve

Loader System and Circuit Relief Valves Disassemble and Assemble

DISASSEMBLE

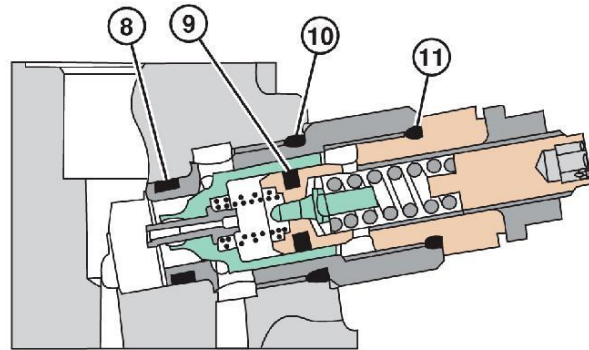


TX1267964-UN: Primary Pressure Relief Valve

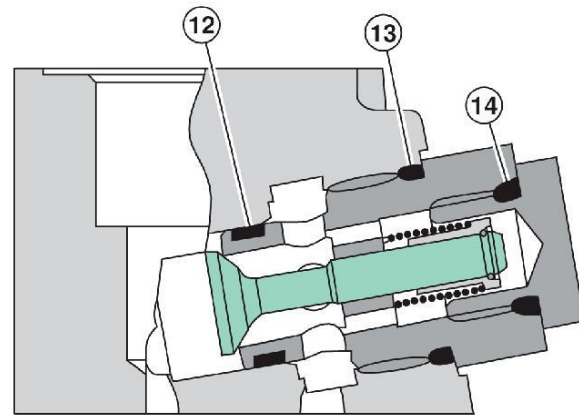


TX1267966-UN: Secondary Pressure Relief Valve

LEGEND:
 1-O-Ring
 2-O-Ring
 3-O-Ring
 4-O-Ring
 5-O-Ring
 6-O-Ring
 7-O-Ring



TX1267968-UN: Secondary Pressure Relief and Anticavitation Valve



TX1267970-UN: Anticavitation Valve

LEGEND:
 8-O-Ring
 9-O-Ring
 10-O-Ring
 11-O-Ring
 12-O-Ring
 13-O-Ring
 14-O-Ring

NOTE:

To aid in assembly of valve, make sure to count the number of turns that is required to remove the adjustment screw.

Disassemble valve.

Only O-rings are serviceable. If any other parts are worn or damaged, replace valve.
 Clean and inspect parts for wear or damage. Apply clean hydraulic oil to parts before assembly.

ASSEMBLE

IMPORTANT:

To prevent damage to machine, install adjustment screw the same number of turns as removed.



Thank you very much
for your reading.
Please click here
to get more information.