

John Deere 624L 4WD Loader Repair Technical Manual - TM14346X19

624L 4WD Loader Diagnostic

PIN: 1DW624L__F693054—



JOHN HARE



COLLECTION

REPAIR TECHNICAL MANUAL

624L 4WD Loader (PIN: 1DW624L__F693054—)

TM14346X19 30NOV19 (ENGLISH)

For complete service information also see:

624L 4WD Loader Diagnostic TM14343X19
TeamMate V 1400 Series Inboard Planetary Axes ctm143819
TeamMate™ IV 1200 Series Inboard Planetary Axes ctm140119
PowerTech 6068 OEM Diesel Engines (Final Tier 4/Stage IV platform) Level
33 ECU
Cylinders.....

PDF



DOWNLOAD



Worldwide Construction and
Forestry Division

Covers: 624L, 1DW624L__, F693054 () () () () () () ()

Type: Service Manual

Language: English

Pages: 353

Format: PDF

Features: Bookmarked, searchable, printable

Compatibility: Windows/Mac/Tablet/Mobile

This service manual contains important information for the maintenance, troubleshooting and servicing of the **John Deere 624L 4WD Loader Repair Technical Manual - TM14346X19**

In this manual you will find detailed specifications, illustrations, schematics, diagrams and step-by-step procedures to properly service and diagnose the machine to the manufacturer's standards.

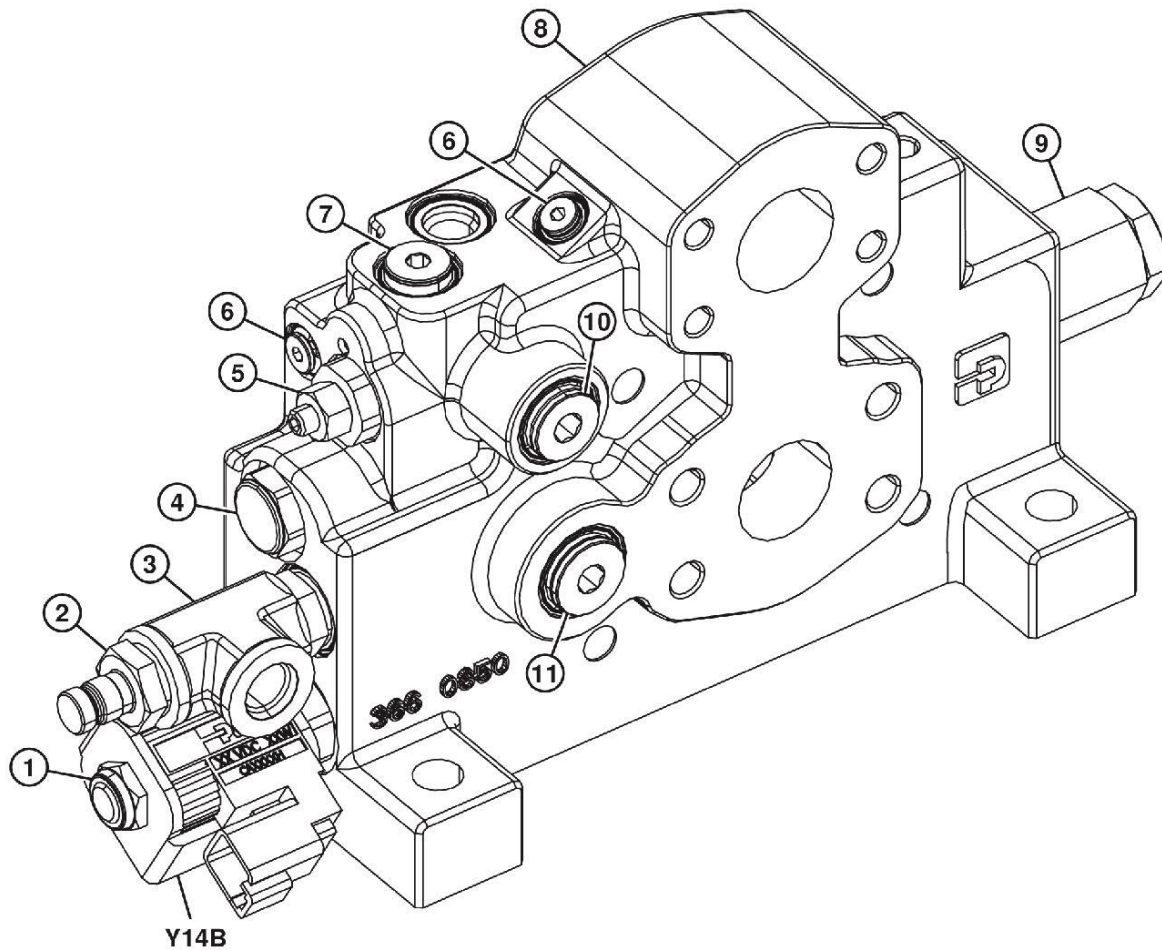
Contents:

- General Information
- Specifications
- Serial Number Location
- Engine Specifications
- Engine Diagnostics
- Engine Tests and Adjustments
- Engine Repair
- Power Train
- Transmission
- Axles
- Differential
- PTO
- Hydraulic System
- Electrical System
- Electrical Tests and Diagnostics
- Wiring Diagram / Schematic
- Ignition and Charging
- Steering
- Brakes
- Wheels
- Operator's Platform
- Body Panels
- Disassembly and Assembly
- Diagnostics, Tests and Adjustments
- Troubleshooting
- and much more...

Please note this manual is in **downloadable PDF format only**. If you have any questions about this product or would like to request sample pages, please contact us and reference the product name or SKU.

Inlet Valve Section Disassemble and Assemble

Z-Bar



TX1274429

TX1274429-UN: Inlet Section (Z-bar)

LEGEND:

1-Nut
2-Pilot Test Port
3-Tee Fitting
4-Pilot Check Valve
5-Pressure Reducing Valve

6-Plug (2 used)
7-Plug
8-Housing
9-Main Relief Valve
10-Plug

11-Plug
Y14B-Pilot Enable Solenoid (624L Z-bar only)

DISASSEMBLE

NOTE:

Not all parts are serviceable. Disassembly is for inspection only.

Remove and disassemble components as shown. For loader control valve disassembly, [see Loader Control Valve Disassemble and Assemble](#). (Group 3160.)

For further information on disassembly and assembly of the main relief valve (9), [see Main Relief Valve Disassemble and Assemble](#). (Group 3160.)

ASSEMBLE

IMPORTANT:

Avoid O-ring or component damage. Apply clean hydraulic oil to all internal parts before assembling, and apply petroleum jelly to backup rings and O-rings before installation.

Assemble components as shown.

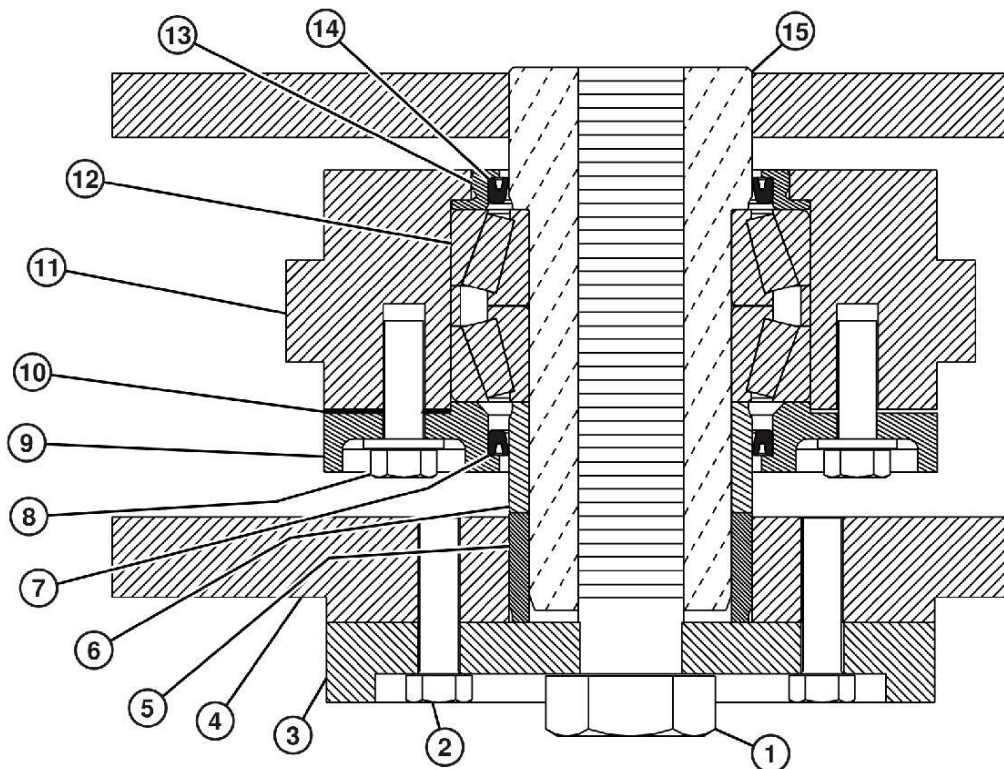
Lower Pivot Bearing and Seals Remove and Install

SPECIFICATIONS

Lower Pivot Bearing Preload	0.03—0.13 mm 0.001—0.005 in
Lower Pivot Bearing Cap Screw Torque	129 N·m 95 lb·ft
Cap Screw Torque	128 N·m 95 lb·ft
Pin Retaining Cap Screw Torque Turn	320 N·m + 1/6 Turn (60°) 605 lb·ft + 1/6 Turn (60°)

SERVICE EQUIPMENT AND TOOLS

D01047AA 17-1/2 & 30-Ton Capacity Puller Set
 JT01933 Set, Driver
 TY6341 Multipurpose SD Polyurea Grease



1. TX1028998

TX1028998-UN: Lower Pivot Bearing and Seals

LEGEND:

1-Pin Retaining Cap Screw
 2-Cap Screw (6 used)
 3-Plate
 4-Engine Frame
 5-Spacer (engine frame)
 6-Spacer (loader frame)
 7-Cover Seal
 8-Cap Screw (6 used)

9-Cover Plate
 10-Shim (as needed)
 11-Loader Frame
 12-Bearing
 13-Spacer Seal
 14-Seal
 15-Lower Pivot Pin

Remove pin retaining cap screw (1) and lower pivot pin (15), separate machine frames. See [Engine and Loader Frame Separate](#) . (Group 1740.)

2. Remove cap screws (8), cover plate (9), spacer (6), cover seal (7), and shims (10).



Thank you very much
for your reading.
Please click here
to get more information.