

John Deere 655K Crawler Loader Repair Technical Manual - TM14325X19

655K Crawler Loader Repair

PIN: 1T0655KX__F339207—



JOHN HARE



COLLECTION

REPAIR TECHNICAL MANUAL

655K Crawler Loader (PIN: 1T0655KX__F339207—)

TM14325X19 30NOV19 (ENGLISH)

For complete service information also see:

655K Crawler Loader Diagnostic.....	TM14323X19
PowerTech 6068 OEM Diesel Engines (Final Tier 4/Stage IV platform) Level 33 ECU.....	clm120019
Hydraulic Cylinders.....	clm120519



Worldwide Construction and Forestry Division

Covers: 655K,1T0655KX__,F339207(???)

Type: Service Manual

Language: English

Pages: 413

Format: PDF

Features: Bookmarked, searchable, printable

Compatibility: Windows/Mac/Tablet/Mobile

This service manual contains important information for the maintenance, troubleshooting and servicing of the **John Deere 655K Crawler Loader Repair Technical Manual - TM14325X19**

In this manual you will find detailed specifications, illustrations, schematics, diagrams and step-by-step procedures to properly service and diagnose the machine to the manufacturer's standards.

Contents:

- General Information
- Specifications
- Serial Number Location
- Engine Specifications
- Engine Diagnostics
- Engine Tests and Adjustments
- Engine Repair
- Power Train
- Transmission
- Axles
- Differential
- PTO
- Hydraulic System
- Electrical System
- Electrical Tests and Diagnostics
- Wiring Diagram / Schematic
- Ignition and Charging
- Steering
- Brakes
- Wheels
- Operator's Platform
- Body Panels
- Disassembly and Assembly
- Diagnostics, Tests and Adjustments
- Troubleshooting
- and much more...

Please note this manual is in **downloadable PDF format only**. If you have any questions about this product or would like to request sample pages, please contact us and reference the product name or SKU.

Carrier Roller Disassemble and Assemble

SPECIFICATIONS

Bearing Cups Temperature	-18°C 0°F
Inner Bearing Cone Temperature	121°C 250°F
Outer Bearing Cone Temperature	121°C 250°F
Retainer Plate Cap Screws Torque	47 N·m 35 lb·ft
Carrier Roller Oil Capacity	325 mL 11 oz

ESSENTIAL TOOLS

JDG205 Seal Installer

OTHER MATERIAL

PM37552 Loctite® Brush On

PM37397 Loctite® Thread Sealant

3. NOTE:

Oil will drain from housing when cover is removed.

Remove cover (3) using slide hammer.

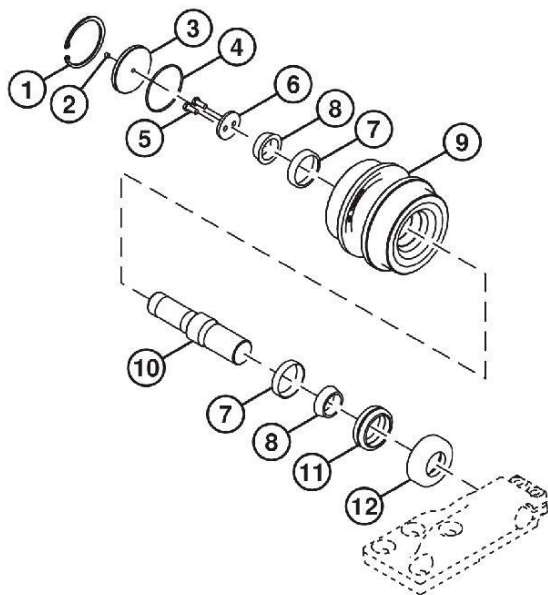
- Remove cap screws (5) and retainer plate (6).
- Remove outer bearing cone (8) and shaft (10) from roller shell (9) using a press.
- Remove inner bearing cone (8) from shaft using a press.
- Remove seal retainer (12) from shaft using a press.

IMPORTANT:

- Metal face seals can be reused if they are not worn or damaged. A used seal must be kept together as a set because of wear patterns on seal ring face.**

Remove metal face seal (11). Keep seal rings together as a matched set with faces together to protect lapped surfaces. [See Metal Face Seal Inspection](#). (Group 0130.)

- Remove bearing cups (7) from roller shell.
- Inspect roller shell for grooved, burred, or galled condition. Replace parts as necessary.



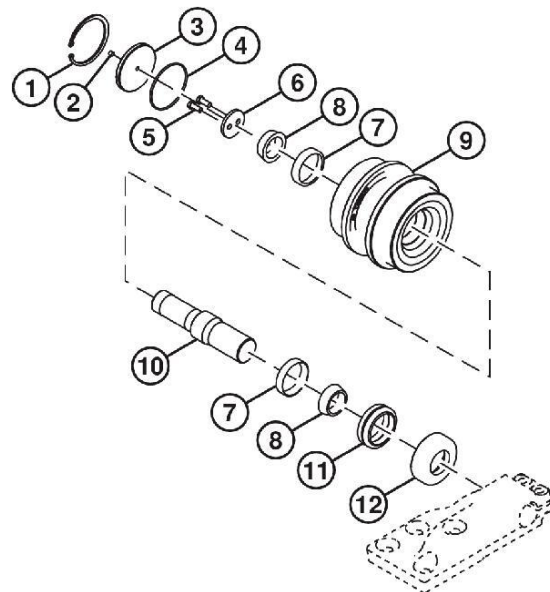
- TX1069127-UN: Carrier Roller Assembly

LEGEND:

- 1-Retaining Ring
- 2-Pipe Plug
- 3-Cover
- 4-O-Ring
- 5-Cap Screw M10 X 25 (2 used)
- 6-Retainer Plate
- 7-Bearing Cup (2 used)
- 8-Bearing Cone (2 used)
- 9-Roller Shell
- 10-Shaft
- 11-Metal Face Seal
- 12-Seal Retainer

Remove retaining ring (1).

- Remove pipe plug (2).



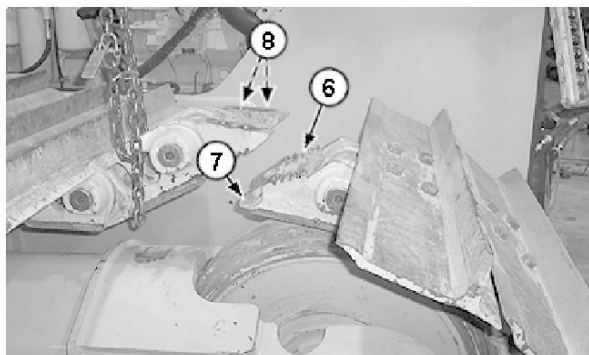
- TX1069127-UN: Carrier Roller Assembly

LEGEND:

- 1-Retaining Ring
- 2-Pipe Plug
- 3-Cover
- 4-O-Ring
- 5-Cap Screw M10 X 25 (2 used)
- 6-Retainer Plate
- 7-Bearing Cup (2 used)
- 8-Bearing Cone (2 used)
- 9-Roller Shell
- 10-Shaft
- 11-Metal Face Seal
- 12-Seal Retainer

Cool bearing cups (7) to specification and press into roller shell.

Item	Measurement	Specification
Bearing Cups	Temperature	-18°C 0°F



11. TX1089347A-UN: Track Chain Installation

LEGEND:

6-Ramp Surface

7-Tip of Master Link Ramp

8-Hole (4 used)

Guide track chain over sprocket while operator drives machine slowly forward, guiding track chain over carrier roller and front idler.

12. Stop machine when ends of master links meet.

13. Clean debris from master link tooth racks and ramp surfaces (6). Clean surface with wire brush if necessary.

14. Remove all burrs so ramp surfaces are flat, especially at tip of master link ramp (7).

15. NOTE:

Bolt holes **MUST** be clean and free of foreign material.

Clean debris from bolt holes (8) in each master link.

IMPORTANT:

16. Prevent damage to master link hole threads. DO NOT use a pry bar in holes to align split master link.



T210052A-UN: Align Master Links

Carefully assemble master links together and align bolt holes.

17. Install track bolts by hand to check alignment.

18. Apply TY24811 Compound Lubricant or an equivalent to cap screw threads and bearing surface under head.



19. TX1089346A-UN: Master Track Shoe

LEGEND:

4-Track Bolt (4 used)

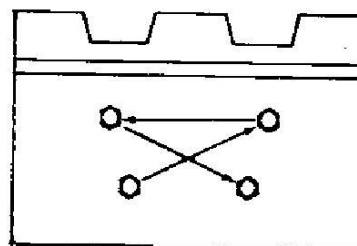
5-Master Track Shoe

Remove any foreign material from master track shoe and link mounting surfaces.

IMPORTANT:

20. Prevent cross-threading of cap screws. NEVER use an impact wrench to start cap screws.

Install master track shoe (5) on master links and start track bolts (4) by hand to avoid cross-threading.



21. T6352AH-UN: Crisscross Tightening Sequence

Tighten cap screws to specification using a crisscross sequence.

Item	Measurement	Specification
Track and Split Master Link Shoe Cap Screw	Torque	270 N·m 199 lb.-ft.

22. Turn cap screws an additional half turn using a crisscross sequence.

Item	Measurement	Specification
Track and Split Master Link Shoe Cap Screw	Additional Turn	1/2 (180°)



Thank you very much
for your reading.
Please click here
to get more information.