

John Deere 848L-II, 948L-II Skidders Repair Technical Manual (TM14336X19)

848L-II, 948L-II Skidders Repair

PIN: 1DW848L___F690814—

PIN: 1DW948L___F690814—



JOHN HARE



COLLECTION

REPAIR TECHNICAL MANUAL 848L-II, 948L-II Skidders

(PIN: 1DW848L___F690814—; PIN: 1DW948L___F690814—)

TM14336X19 30NOV19 (ENGLISH)

For complete service information also see:

TFAMMATE V1700 Series Outboard Planetary Axles dm129419
848L-I, 948L-I Skidders Diagnostic TM 14335X12
6092 PowerTech™ CFM Diesel Engines (Final Tier 4/Stage
IV platform) 117719
Hydraulic Cylinders 519
60 and 6000 Winches
40 and 4000 Winches
JDLink™ 2G / 3G MTS Technical Manual
JDLink™ (MTS) 4G LTE Technical Manual



Worldwide Construction and
Forestry Division

Covers: 848L-II,1DW848L___F690814(???,948L-II,1DW948L___F69

Type: Service Manual

Language: English

Pages: 371

Format: PDF

Features: Bookmarked, searchable, printable

Compatibility: Windows/Mac/Tablet/Mobile

This service manual contains important information for the maintenance, troubleshooting and servicing of the **John Deere 848L-II, 948L-II Skidders Repair Technical Manual (TM14336X19)**

In this manual you will find detailed specifications, illustrations, schematics, diagrams and step-by-step procedures to properly service and diagnose the machine to the manufacturer's standards.

Contents:

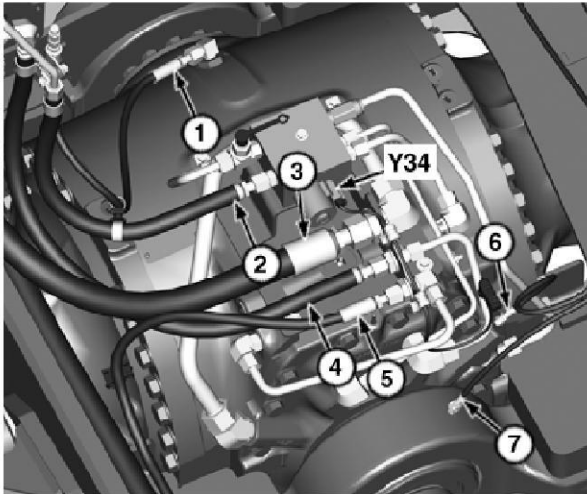
- General Information
- Specifications
- Serial Number Location
- Engine Specifications
- Engine Diagnostics
- Engine Tests and Adjustments
- Engine Repair
- Power Train
- Transmission
- Axles
- Differential
- PTO
- Hydraulic System
- Electrical System
- Electrical Tests and Diagnostics
- Wiring Diagram / Schematic
- Ignition and Charging
- Steering
- Brakes
- Wheels
- Operator's Platform
- Body Panels
- Disassembly and Assembly
- Diagnostics, Tests and Adjustments
- Troubleshooting
- and much more...

Please note this manual is in **downloadable PDF format only**. If you have any questions about this product or would like to request sample pages, please contact us and reference the product name or SKU.

Front Axle, Differential, and Oscillation Supports Remove and Install

SPECIFICATIONS	
848L and 948L Skidder Weight (approximate)	26 432 kg 58 273 lb
1700 Series Axle (TeamMate™ V) Weight (approximate)	2603 kg 5740 lb
Cap Screw (8) Torque	542 N·m 400 lb·ft

REMOVAL




TX1264624A-UN: Front Axle Hydraulic Lines

LEGEND:

- 1-Axle Vent Line
- 2-High-Pressure Line (differential fluid filter to port PUMP)
- 3-Suction Line (port SUCTION to pump)
- 4-Return Line (pressure relief valve to port TANK)
- 5-Service Brake Line (front axle port BRAKE to service brake electrohydraulic [EH] valve port B)
- 6-Pinion Seal Lubrication Line
- 7-Rear Axle Oscillation Pivot Lubrication Line
- Y34-Front Axle Differential Lock Solenoid

1. Park and prepare machine for service. [See Park and Prepare for Service Safely.](#) (Operator's Manual.)
2. Turn battery disconnect switch to the OFF position. See Battery Disconnect Switch - document OMT412049X19 - (Operator's Manual.)
3. Remove engine side shields, right hood side shield, and right side hood support. [See Hood Remove and Install.](#) (Group 1910.)

4.  **CAUTION:**
Prevent possible crushing injury from heavy component. Weight may increase significantly due to buildup of mud or debris. Remove debris before proceeding with task. Use appropriate lifting device.

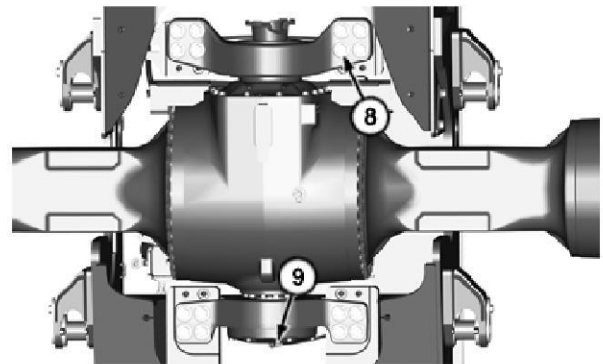
NOTE:

The machine must be raised a minimum of 76 cm (30 in) from the bottom of the axle to the ground to allow for enough space for the axle to be removed.

Attach appropriate lifting device and raise front of machine. Install floor stands underneath frame.

Item	Measurement	Specification
848L and 948L Skidder	Weight (approximate)	26 432 kg 58 273 lb

5. Remove front wheels. [See Wheel Remove and Install.](#) (Group 0110.)
6. Remove bottom guards. [See Bottom Guards Remove and Install.](#) (Group 1746.)
7. Remove air cleaner. [See Air Cleaner Remove and Install.](#) (Group 0520.)
8. Remove front axle drive shaft. [See Front Axle Drive Shaft Remove and Install.](#) (Group 0225.)
9. Remove transmission drive shaft. [See Rear Axle and Transmission Drive Shaft Remove and Install.](#) (Group 0225.)
10. Install identification tags and disconnect front axle differential lock solenoid (Y34).
11. Install identification tags and disconnect front axle hydraulic lines (1—5) and lubrication lines (6 and 7). Close all openings using caps and plugs. See Power Train Line Identification - document TM14335X19 - (Group 9020-10.)



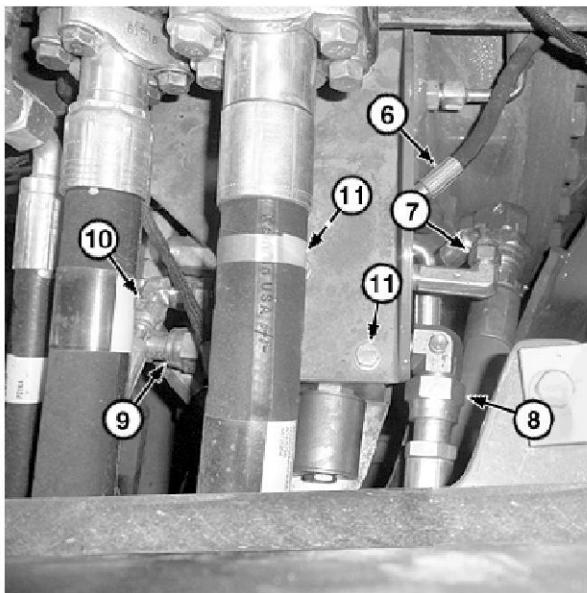
12. TX1264644A-JN: Oscillation Support Cap Screws
LEGEND:
8-Cap Screw (16 used)
9-Front Oscillation Support Lubrication Line
Install identification tag and disconnect front oscillation support lubrication line (9). Close all openings using caps and plugs.

SPECIFICATIONS

Nut (12) Torque	8.1 N·m 72 lb·in
Valve Cartridge (13) Torque	34 N·m 25 lb·ft
Line Fitting (14, 15, 17, and 18) Torque	33 N·m 24 lb·ft
Sequence Valve (16) Torque	34 N·m 25 lb·ft
Differential Lock Pressure Test Port (6) Torque	24 N·m 212 lb·in
Return Line (port DIFF to port DIFLOCK) (7) Torque	46 N·m 34 lb·ft
High-Pressure Line (differential fluid filter to pressure relief valve) (8) Torque	152 N·m 112 lb·ft
High-Pressure Line (port cooler to lube) (9) Torque	103 N·m 76 lb·ft

REMOVAL

1. Park and prepare machine for service. See Park and Prepare for Service Safely. (Group 0001.)
2. Turn battery disconnect switch to the OFF position. See Battery Disconnect Switch - document OMT412049X19 - (Operator's Manual.)
3. Remove rear fuel tank guard or guard plate. See Fuel Tank Guards Remove and Install. (Group 1910.)



4. TX11E5669A-JN: Rear Differential Lock Solenoid Valve

LEGEND:

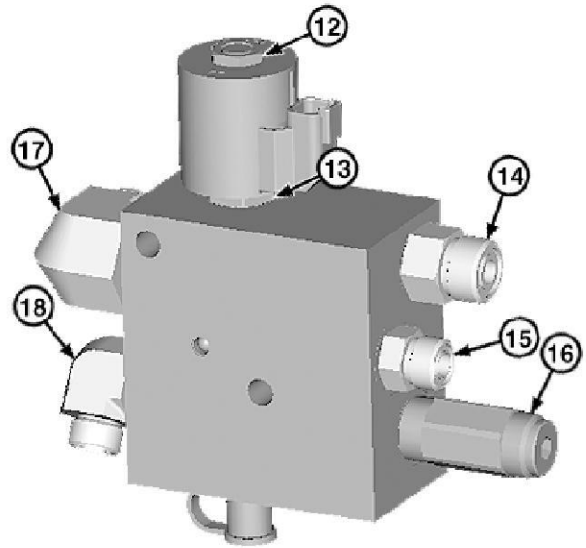
- 6-Differential Lock Pressure Test Port Line**
- 7-Return Line (port DIFF to port DIFLOCK)**
- 8-High-Pressure Line (differential fluid filter to pressure relief valve)**
- 9-High-Pressure Line (port COOLER to port LUBE)**
- 10-Return Line (port AXLRET to port TANK)**
- 11-Cap Screw (2 used)**

Install identification tags and disconnect hydraulic lines (6—10). Close all openings using caps and plugs. See Power Train Line Identification - document TM14335X19 - (Group 9020-10.)

5. Remove cap screws (11) and rear differential lock valve.
6. Clean and inspect parts. Repair or replace as necessary.

INSTALLATION

Installation is reverse of removal procedure.



TX11E5668A-JN: Differential Lock Valve

LEGEND:

- 12-Nut**
- 13-Valve Cartridge**
- 14-Return Line Fitting**
- 15-High-Pressure Line Fitting**
- 16-Sequence Valve**
- 17-High-Pressure Line Fitting**
- 18-Return Line Fitting**

Tighten nut (12) to specification.

Item	Measurement	Specification
Nut (12)	Torque	8.1 N·m 72 lb·in

Tighten valve cartridge (13) to specification.

Item	Measurement	Specification
Valve Cartridge (13)	Torque	34 N·m 25 lb·ft

Tighten line fittings (14, 15, 17, and 18) to specification.

Item	Measurement	Specification
Line Fittings (14, 15, 17, and 18)	Torque	33 N·m 24 lb·ft

Tighten sequence valve (16) to specification.

Item	Measurement	Specification
Sequence Valve (16)	Torque	34 N·m 25 lb·ft

Tighten differential lock pressure test port (6) to specification.

Item	Measurement	Specification
Differential Lock Pressure Test Port (6)	Torque	24 N·m 212 lb·in

Tighten return line (7) to specification.

Item	Measurement	Specification
Return Line (port DIFF to port DIFLOCK) (7)	Torque	46 N·m 34 lb·ft

Tighten high-pressure line (8) to specification.

Item	Measurement	Specification
High-Pressure Line (differential fluid filter to pressure relief valve) (8)	Torque	152 N·m 112 lb·ft

Tighten high-pressure line (9) to specification.

Item	Measurement	Specification
High-Pressure Line (port COOLER to port LUBE) (9)	Torque	103 N·m 76 lb·ft

JR49325, 00004E8-19-20191108



Thank you very much
for your reading.
Please click here
to get more information.