

John Deere 950K Crawler Dozer Repair Technical Manual (TM14360X19)

950K Crawler Dozer Repair

PIN: 1T0950KP__C334109—
PIN: 1T0950KS__C339000—
PIN: 1T0950KL__C339000—
PIN: 1T0950KX__C339000—



JOHN HARE



PDF REPAIR COLLECTION

DOWNLOAD

950K Crawler Dozer
(PIN: 1T0950KP__C334109—, PIN: 1T0950KS__C339000—)

Type: Service Manual

Language: English

Pages: 406

Format: PDF

Features: Bookmarked, searchable, printable

Compatibility: Windows/Mac/Tablet/Mobile

This service manual contains important information for the maintenance, troubleshooting and servicing of the **John Deere 950K Crawler Dozer Repair Technical Manual (TM14360X19)**

In this manual you will find detailed specifications, illustrations, schematics, diagrams and step-by-step procedures to properly service and diagnose the machine to the manufacturer's standards.

Contents:

- General Information
- Specifications
- Serial Number Location
- Engine Specifications
- Engine Diagnostics
- Engine Tests and Adjustments
- Engine Repair
- Power Train
- Transmission
- Axles
- Differential
- PTO
- Hydraulic System
- Electrical System
- Electrical Tests and Diagnostics
- Wiring Diagram / Schematic
- Ignition and Charging
- Steering
- Brakes
- Wheels
- Operator's Platform
- Body Panels
- Disassembly and Assembly
- Diagnostics, Tests and Adjustments
- Troubleshooting
- and much more...

Please note this manual is in **downloadable PDF format only**. If you have any questions about this product or would like to request sample pages, please contact us and reference the product name or SKU.

Engine Side Shields Remove and Install

SPECIFICATIONS	
Engine Side Shield (OSD/PAT) Weight (approximate)	54 kg 119 lb
Engine Side Shield and Rear Side Shield (waste handler) Weight (approximate)	45 kg 99 lb
Rear Side Shield (waste handler) Weight (approximate)	27 kg 60 lb

MACHINE PREPARATION

1. Park and prepare machine for service safely. [See Park and Prepare for Service Safely](#). (Group 0001.)
2. Lower blade and ripper (if equipped) to ground.

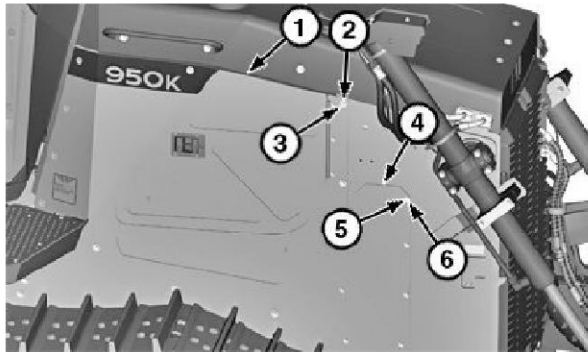
Outside Dozer (OSD)/Power Angle Tilt (PAT)

REMOVAL

1.  **CAUTION:**
Prevent possible crushing injury from heavy component. Use appropriate lifting device.

NOTE:

Left and right engine side shields are similar in design. Right side shown for removal procedure.



TX1236025-LN: Engine Side Shields (OSD/PAT, right side shown)

LEGEND:

- 1-Engine Side Shield
- 2-Cap Screw (10 used)
- 3-Washer (10 used)
- 4-Small Cover
- 5-Cap Screw (7 used)
- 6-Washer (7 used)

Attach appropriate lifting device to engine side shield (1).

Item	Measurement	Specification
Engine Side Shield (OSD/PAT)	Weight (approximate)	54 kg 119 lb

2. Remove cap screws (2), washers (3), and engine side shield.
3. Remove cap screws (5), washers (6), and small cover (4).
4. Repair or replace parts as necessary.

INSTALLATION

Installation is reverse of removal procedure.

Waster Handler

REMOVAL

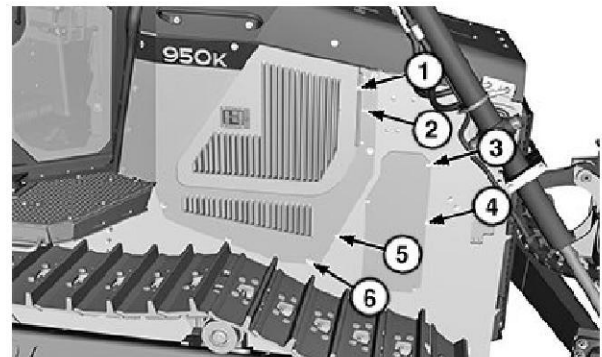
1.  **CAUTION:**
Prevent possible crushing injury from heavy component. Use appropriate lifting device.

NOTE:

Left and right engine side shields are similar in design. Right side shown for removal procedure.

NOTE:

Engine side shield (1) can be removed attached to the rear side shield (5). If removing both shields as one unit, skip first step.



TX1243697A-UN: Engine Side Shields (waste handler, right side shown)

LEGEND:

- 1-Engine Side Shield
- 2-Cap Screw (3 used)
- 3-Cap Screw (4 used)
- 4-Small Cover
- 5-Rear Side Shield
- 6-Cap Screw (10 used)

Remove cap screws (2) and engine side shield.

2. Attach appropriate lifting device to rear side shield.

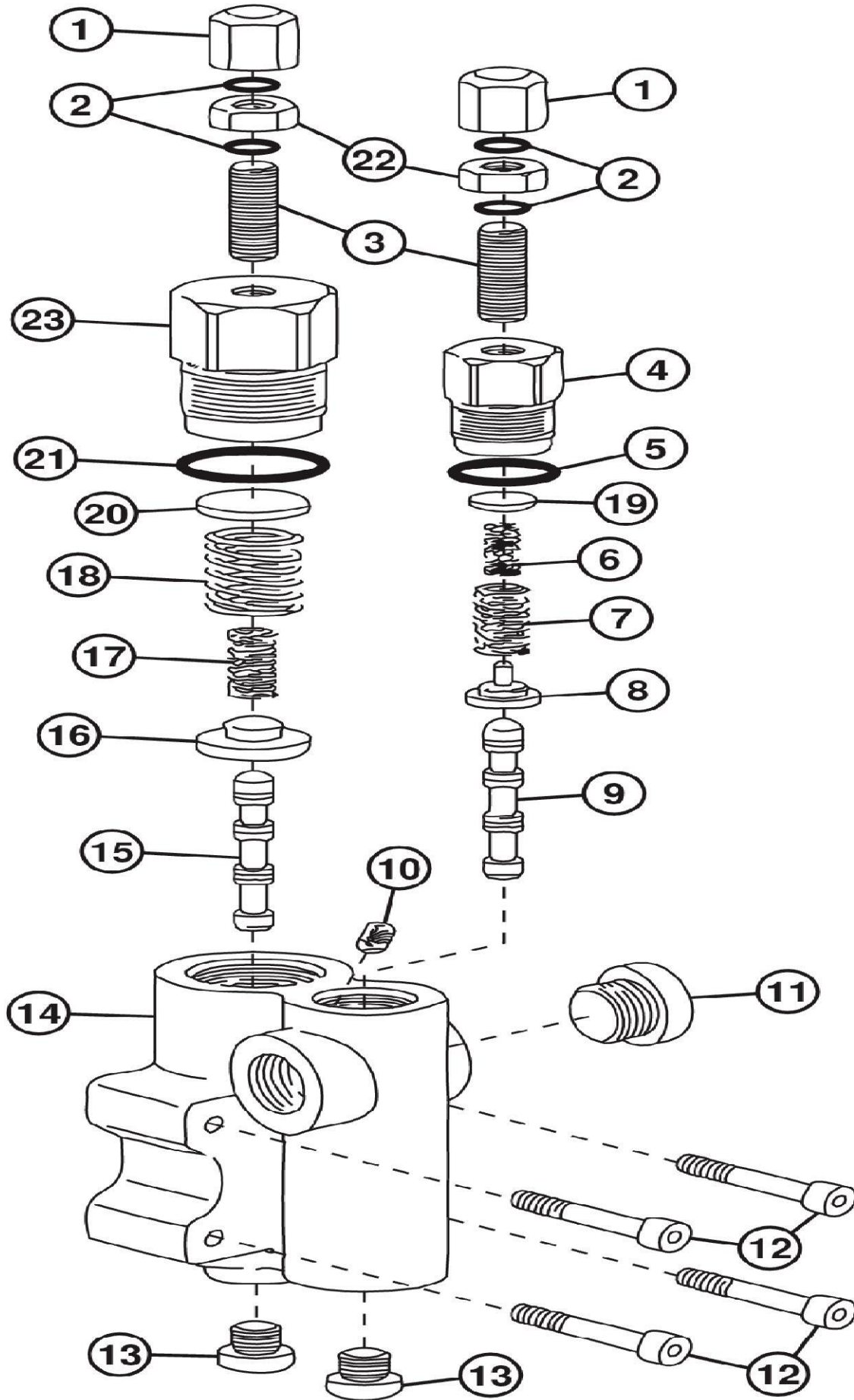
Item	Measurement	Specification
Engine Side Shield and Rear Side Shield (waste handler)	Weight (approximate)	45 kg 99 lb
Rear Side Shield (waste handler)	Weight (approximate)	27 kg 60 lb

3. Remove cap screws (6) and rear side shield.
4. Remove cap screws (3) and small cover (4).
5. Repair or replace parts as necessary.

INSTALLATION

Installation is reverse of removal procedure.

MM16284,0002030-19-20170330



T211863-UN: Pump Control Valve (exploded view)
LEGEND:



Thank you very much
for your reading.
Please click here
to get more information.