

John Deere W330 Combine Diagnostic Technical Manual - TM152019

**W330 Combine
Diagnostic**



JOHN HARE



COLLECTION

**DIAGNOSTIC TECHNICAL MANUAL
W330 Combine**

TM152019 01DEC18 (ENGLISH)



Deere & Company (XG)

Covers: W330

Type: Service Manual

Language: English

Pages: 359

Format: PDF

Features: Bookmarked, searchable, printable

Compatibility: Windows/Mac/Tablet/Mobile

This service manual contains important information for the maintenance, troubleshooting and servicing of the **John Deere W330 Combine Diagnostic Technical Manual - TM152019**

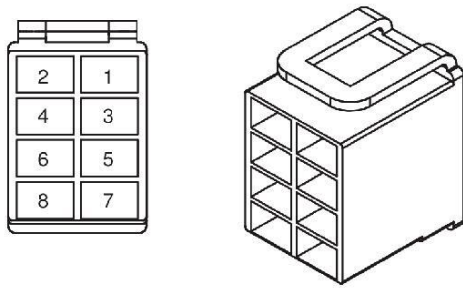
In this manual you will find detailed specifications, illustrations, schematics, diagrams and step-by-step procedures to properly service and diagnose the machine to the manufacturer's standards.

Contents:

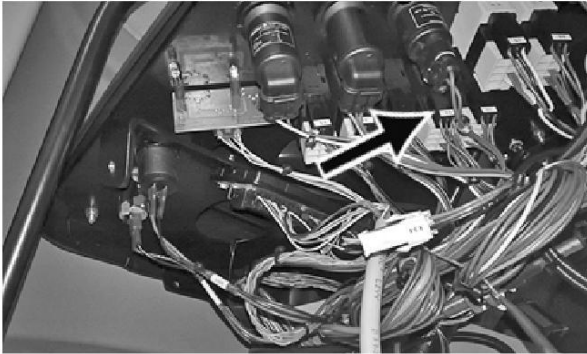
- General Information
- Specifications
- Serial Number Location
- Engine Specifications
- Engine Diagnostics
- Engine Tests and Adjustments
- Engine Repair
- Power Train
- Transmission
- Axles
- Differential
- PTO
- Hydraulic System
- Electrical System
- Electrical Tests and Diagnostics
- Wiring Diagram / Schematic
- Ignition and Charging
- Steering
- Brakes
- Wheels
- Operator's Platform
- Body Panels
- Disassembly and Assembly
- Diagnostics, Tests and Adjustments
- Troubleshooting
- and much more...

Please note this manual is in **downloadable PDF format only**. If you have any questions about this product or would like to request sample pages, please contact us and reference the product name or SKU.

S5:1 - 4WD (Four-wheel Drive)



RXA0085529-UN: S1:1



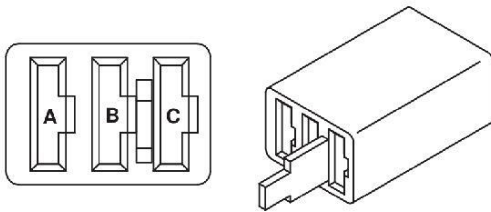
H123767-UN: S5

Component Information	
Number of Pins	8
Connection Point	
Harness Information	R715603D
Repair Information	

Pin	Circuit	Color
1	49/51	Pink
2	PLUG	—
3	PLUG	—
4	PLUG	—
5	50/52	Pink
6	PLUG	—
7	PLUG	—
8	PLUG	—

JR62642,0003226-19-20180314

S5:2



H123728-UN: End View

Component Information	
Number of Pins	3
Connection Point	
Harness Information	R715603D
Repair Information	

Pin	Circuit	Color
A	51	Pink
B	56	Black
C	52/59	Pink

JR62642,0003227-19-20180314

Working Hydraulics - Claas Industrial Technologies (CIT), Lifting the Unloading Pipe

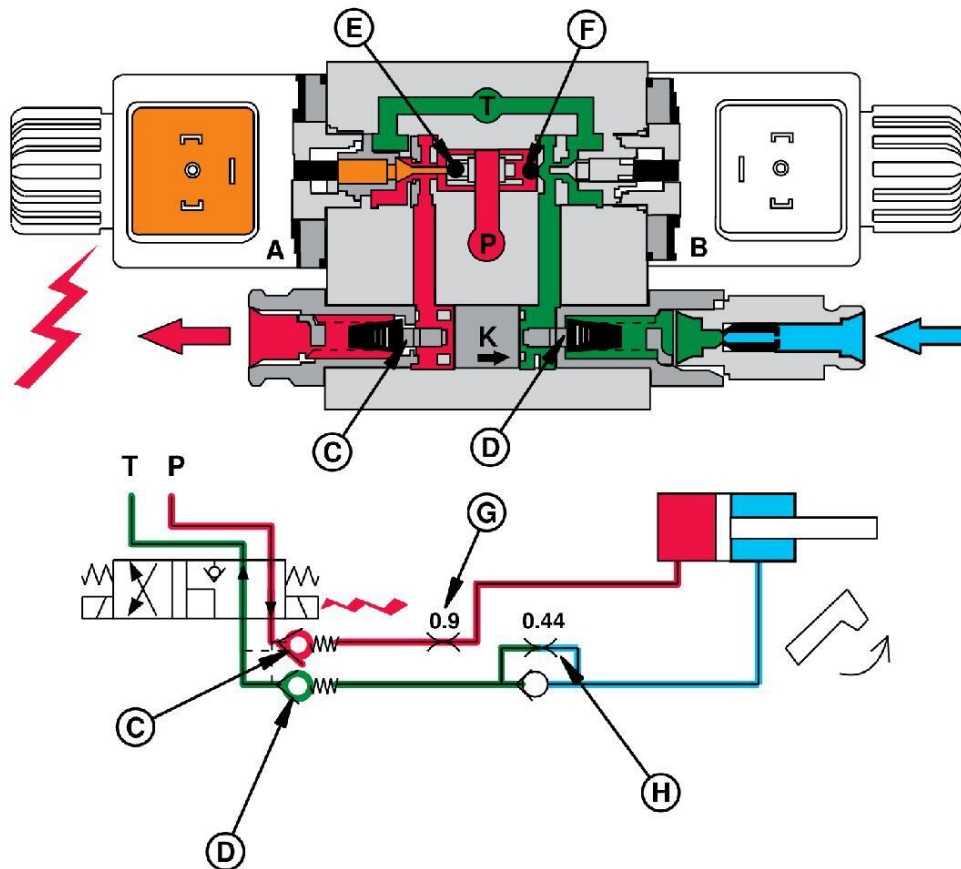
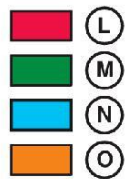


FIGURE 136

H123377-UN..

LEGEND:

A- Y501—Unloading Auger Out Solenoid

B- Y500—Unloading Auger In Solenoid

C-Check Valve

D-Check Valve

E-Check Valve

F-Check Valve

G-Restrictor

H-Restrictor

K-Piston

L-Red - Pressure

M-Green - Return

N-Blue - Variable Pressure

O-Orange - Charge Pressure

P-Pressure Line

T-Tank Line

CIT, lifting of the unloading pipe, **Figure 136** .

When the electric switch for unloading pipe lift is pressed, the free flow valve in the main section closes and valve (A) in the additional section open its check valve (E). Pressurized oil flows through the section and it opens check valve (C) on the way to the piston side in the cylinder. Oil pressure causes piston (K) to move in the direction of the arrow. This action opens check valve (D) so that the oil flows from the piston rod side in the cylinder back to the tank line. Restrictor (G) (0.9 mm) on the pressure side and one-way restrictor (H) (0.44 mm) on the return side determine the speed of turning. During turning, some of the oil flows through the relief valve into the tank line.

OUHX149,0002F33-19-20180313



Thank you very much
for your reading.
Please click here
to get more information.