

# 310SL Backhoe Loader

(PIN: C273920—390995)

(PIN: D273920—390995)



## OPERATOR'S MANUAL

### 310SL Backhoe Loader

OMT357554X19 ISSUE A4 (ENGLISH)

#### CALIFORNIA

#### Proposition 65 Warning

Diesel engine exhaust and some of its constituents are known to the State of California to cause cancer, birth defects, and other reproductive harm.

PDF



DOWNLOAD



If this product

#### **WARNING**

The engine exhaust from this product contains chemicals known to the State of California to cause cancer, birth defects or other reproductive harm.

The State of California requires the above two warnings.

**Worldwide Construction  
And Forestry Division**

PRINTED IN U.S.A.

# Introduction

## Foreword

READ THIS MANUAL carefully to learn how to operate and service your machine correctly. Failure to do so could result in personal injury or equipment damage. This manual and safety signs on your machine may also be available in other languages. (See your John Deere dealer to order.)

THIS MANUAL SHOULD BE CONSIDERED a permanent part of your machine and should remain with the machine when you sell it.

MEASUREMENTS in this manual are given in both metric and customary U.S. unit equivalents. Use only correct replacement parts and fasteners. Metric and inch fasteners may require a specific metric or inch wrench.

RIGHT-HAND AND LEFT-HAND sides are determined by facing in the direction of forward travel.

WRITE PRODUCT IDENTIFICATION NUMBERS (P.I.N.) in the Machine Numbers section. Accurately record all the numbers to help in tracing the machine should it be stolen. Your dealer also needs these numbers when you order parts. File the identification numbers in a secure place off the machine.

WARRANTY is provided as part of John Deere's support program for customers who operate and maintain their

equipment as described in this manual. The warranty is explained on the warranty certificate or statement which you should have received from your dealer.

This warranty provides you the assurance that John Deere will back its products where defects appear within the warranty period. In some circumstances, John Deere also provides field improvements, often without charge to the customer, even if the product is out of warranty. Should the equipment be abused, or modified to change its performance beyond the original factory specifications, the warranty will become void and field improvements may be denied. Setting fuel delivery above specifications or otherwise overpowering machines will result in such action.

THE TIRE MANUFACTURER'S warranty supplied with your machine may not apply outside the U.S.

If you are not the original owner of this machine, it is in your interest to contact your local John Deere dealer to inform them of this unit's serial number. This will help John Deere notify you of any issues or product improvements.

DX,IFC7 -19-03APR09-1/1

## Manual Identification—READ THIS FIRST!

**IMPORTANT:** Use only supporting manuals designated for your specific machine. If incorrect manual is chosen, improper service may occur. Verify product identification number (PIN) when choosing the correct manual.

### Choosing the Correct Supporting Manuals

John Deere backhoe loaders are available in different machine configurations based on the various markets into which they are sold. Different supporting manuals exist for different machine configurations.

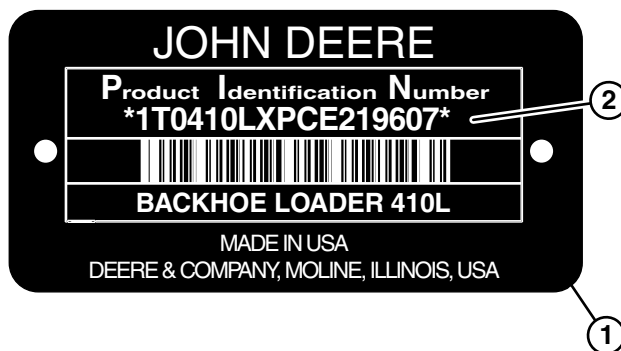
When necessary, product identification numbers are listed on the front covers of backhoe loader manuals. These numbers are used to identify the correct supporting manual for your machine.

### Product Identification Number

The product identification number (PIN) plate (1) is located on left side of machine on the loader frame. Each machine has a 17-character PIN (2) shown on PIN plate.



*PIN Plate Location*



*Example of PIN Plate*

1— PIN Plate

2— 17-Character PIN

TX1171862 —UN—17DEC14

TX1171648 —UN—11SEP14

Introduction

The PIN identifies the producing factory, machine model number, machine option, year of manufacture, engine emission level, and machine serial number.

The following is an example for a machine that meets Tier 3 and Stage III A emission levels:

17-Character PIN Examples																
1	2	3	4	5	6	7	8	9	10	11	12	13	14	15	16	17
1	T	0	3	1	0	S	L	-	-	D	1	2	3	4	5	6

• **(1—3) World Code:** Identifies location where machine is manufactured.

- 1T0 ..... **World Code** (manufacturing location)
- 1DW ..... Davenport Works
- 1T8 ..... Thibodaux Works
- 1T0 ..... Dubuque Works

• **(4—8) Machine Model and Series Identifier:** Identifies model number and series.

310SL ..... **Machine Model and Series Identifier**

*NOTE: Characters 7—8 identify series and major machine configuration options. These characters will change from one machine to another.*

S ..... **Machine Option Code**  
S ..... Base Machine

• **(9) Check Letter:** This is a random character assigned by the factory. This is not used in machine identification.

- ..... **Check Letter** (variable)

• **(10) Manufacturing Year Code:** Identifies year of machine manufacture.

- ..... **Manufacturing Year Code** (variable)

- E ..... 2014
- F ..... 2015
- G ..... 2016
- H ..... 2017

• **(11) Engine Emission Code:** Represents engine emission certification.

D ..... **Engine Emission Code**

- C ..... Tier 2 and Stage II
- D ..... Tier 3 and Stage III A
- E ..... Interim Tier 4 and Stage III B
- F ..... Final Tier 4 and Stage IV

• **(12—17) Machine Serial Number:** Identifies machine serial number. This character will change from one machine to another.

123456 ..... **Machine Serial Number**

JG33441.0000092 -19-22DEC16-2/2

**IMPORTANT**

Warranty will not apply to engine and drivetrain failures resulting from unauthorized adjustments to this engine.

Unauthorized adjustments are in violation of the emissions regulations applicable to this engine and may result in substantial fines and penalties.

VD76477.000104D -19-27JUN12-1/1

## License Agreement for John Deere Software

### LICENSE AGREEMENT FOR JOHN DEERE SOFTWARE

**IMPORTANT -- READ CAREFULLY:** THIS LICENSE AGREEMENT IS A LEGAL CONTRACT BETWEEN YOU AND JOHN DEERE SHARED SERVICES, INC., A CORPORATION HAVING A PRINCIPAL ADDRESS OF ONE JOHN DEERE PLACE, MOLINE, IL 61265 (THE "LICENSOR"). THIS LICENSE AGREEMENT GOVERNS YOUR USE OF ANY SOFTWARE ("SOFTWARE") AND OTHER MATERIALS (INDIVIDUALLY OR COLLECTIVELY "LICENSED MATERIALS" OR "LM") ASSOCIATED WITH ANY DISPLAY, ENGINE CONTROL UNIT, INVERTER, CONTROLLER, ELECTRONICS MODULE, SENSOR, ACTUATOR, OR COMPUTING UNIT (INDIVIDUALLY OR COLLECTIVELY "LICENSED PRODUCTS" OR "LP") OF THE JOHN DEERE EQUIPMENT THAT IS NOT OTHERWISE LICENSED BY A SEPARATE WRITTEN AGREEMENT BETWEEN YOU AND LICENSOR, OR ITS AFFILIATES.

BY ACTIVATING OR OTHERWISE USING THE LP, YOU ARE ACCEPTING AND AGREEING TO THE TERMS OF THIS LICENSE AGREEMENT WITH RESPECT TO THE LM THAT HAVE BEEN PRE-INSTALLED ON YOUR LP. YOU AGREE THAT THIS LICENSE AGREEMENT, INCLUDING THE WARRANTY DISCLAIMERS, LIMITATIONS OF LIABILITY, TERMINATION, AND ARBITRATION PROVISIONS BELOW, IS BINDING UPON YOU, AND UPON ANY COMPANY ON WHOSE BEHALF YOU USE THE LM AND LP AS WELL AS THE EMPLOYEES OF ANY SUCH COMPANY (COLLECTIVELY REFERRED TO AS "YOU" IN THIS LICENSE AGREEMENT). IF YOU DO NOT AGREE TO THE TERMS OF THIS LICENSE AGREEMENT, OR IF YOU ARE NOT AUTHORIZED TO ACCEPT THESE TERMS ON BEHALF OF YOUR COMPANY OR ITS EMPLOYEES, DECLINE THESE TERMS AND CONDITIONS AND DO NOT USE THE LP OR THE JOHN DEERE EQUIPMENT. THIS LICENSE AGREEMENT REPRESENTS THE ENTIRE AGREEMENT CONCERNING THE LM BETWEEN YOU AND THE LICENSOR AND IT REPLACES ANY PRIOR PROPOSAL, REPRESENTATION, OR UNDERSTANDING BETWEEN YOU AND THE LICENSOR.

1. **Description of Software.** Your Licensed Product ("LP") comes with all Software pre-installed for operation of your John Deere Equipment. Licensed Materials ("LM") shall mean any Software, data files, documentation, engine calibration tables, proprietary data messages, and controller area network (CAN) data messages that are in or communicated to or from any LP (e.g., to monitor, diagnose, or operate the John Deere Equipment). Data files shall include but not be limited to any data structure that adjusts engine control parameters, such as fuel metering, fuel injection rate, fuel injection timing, fuel pressure, engine speed versus torque relationship, intake boost pressure, fuel-to-air ratio or engine timing.
2. **License.** Licensor hereby grants to you, and you accept, a nonexclusive license to use the LM in machine-readable, object code form, only as authorized in this License Agreement and the applicable provisions of the Operators' Manuals, which you agree to review carefully prior to using the LM. The LM may be used only on the LP in which it was initially installed and solely in conjunction with the John Deere Equipment in which it was initially installed; or, in the event of the inoperability of that LP, on a replacement LP provided to you by an authorized dealer pursuant to the Limited Warranty of Section 5. You agree that you will not assign, sublicense, transfer, pledge, lease, rent, or share your rights under this License Agreement, except that you may permanently transfer all of your rights under this License Agreement in connection with the sale of the LP or John Deere Equipment on which the LM covered by this Agreement are installed. If you sell or otherwise transfer the ownership of the LP or John Deere Equipment, you agree that you will require such transferee to accept terms no less restrictive than those in this License Agreement. This License Agreement also covers any and all hardware and additional software that may interact with the LM and/or the LP.
3. **Licensor's Rights.** You acknowledge and agree that the LM are proprietary to Licensor, or its affiliates or licensors, and is protected under copyright law, trade secret law, and laws governing confidential information. You shall maintain the confidentiality of the LM, any nonpublic information in the LM and the source code of the Software, regardless of whether the LM is labeled or marked with any proprietary legend or notice that

indicates its confidential nature. You further acknowledge and agree that all right, title, and interest in and to the Software and the LM, including associated intellectual property rights, are and shall remain with Licensor, its affiliates, and their licensors. This License Agreement does not convey to you any title or interest in or to the LM, but only a limited right of use revocable in accordance with the terms of this License Agreement.

4. **License Restrictions, Reverse Engineering.** You may not reproduce, prepare derivative works based on, disclose, publish, distribute, rent, lease, modify, loan, display, or perform the LM or any part thereof. You may not reverse engineer, decompile, translate, adapt, or disassemble the LM, nor shall you attempt to create the source code from the object code for the Software. You may not transmit the LM over any network or via a hacking device, although you may use the LM to make transmissions of diagnostic data messages that are authorized by Licensor and you may receive Software updates authorized by Licensor over any Licensor-authorized communications channel. You also agree not to permit any third party acting under your control to do any of the foregoing activities related to reverse engineering of the Licensed Materials. You agree not to remove or obliterate any copyright, trademark or other proprietary rights notices from the LM, except as expressly permitted in writing by Licensor or its licensors or expressly permitted under applicable law notwithstanding these restrictions.

5. **License Restrictions, Circumvention.** Security measures ("SM") means any of the following: technological measures under the Digital Millennium Copyright Act, copyright protection measures, application enabling mechanisms, passwords, key codes, encryption or other security devices. You agree that you will not: (a) attempt to defeat a SM or defeat a SM that protects the LM and that would constitute a violation under applicable U.S., U.K. or German law related circumvention of technological measures that protect software, copyrighted works, or other intellectual property rights, (b) purchase, manufacture, design, import, sell or distribute any circumvention or hacking device that is designed to circumvent or hack the LM or LP and that are unlawful to distribute under applicable U.S., U.K. or German law, (c) circumvent a SM that protects the LM if the circumvention can be used to access trade secrets or confidential information that is protected under applicable law; (d) apply circumvention devices or hacking devices to the LM, LP or John Deere Equipment (e.g., to bypass, temporarily or otherwise, one or more LPs) in a manner that violates any environmental



Thank you very much  
for your reading.  
Please click here  
to get more information.