


John Deere 1450CWS, 1550CWS (SN.060063-) CIS Combines Diagnostic & Repair Technical Manual(TM800019)



Combines - 1450 CWS CIS
& 1550 CWS CIS -
Diagnostic and Repair

JOHN HARE

COLLECTION

TECHNICAL MANUAL
Combines 1550 CWS, 1450 CWS (SN. 060063-)
TM800019 02 SEP 08 (ENGLISH)

For complete service information also see:

90 Series Corn Heads (705101-) - Diagnostic	TM2168
600 F&R Series Cutting Platforms Diagnostic	TM2166
600 Series Flex and Rigid Cutting Platforms Repair	TM2165
PowerTech 8.1 L Diesel Engines Base Engine	CTM86
Alternators and Stators	CTM77
Machine Connections	
3029, 4039, 4045, 6045, 6045, 6045	
PowerTech 4045, 6068 Diesel Engines	
Denso High Pressure Common Rail	
PowerTech 4.5L & 6.8L Diesel Engines, Tier 2/Stage II, Tier 3/Stage IIIA, Tier 3/Stage IIA Tier 3/Stage III, (6.8L Diesel Engine)	CTM104

John Deere Agriculture
Printed by Belgreen

TM800019

Covers: (SN.060063-);,1450,1550

Type: Service Manual

Language: English

Pages: 539

Format: PDF

Features: Bookmarked, searchable, printable

Compatibility: Windows/Mac/Tablet/Mobile

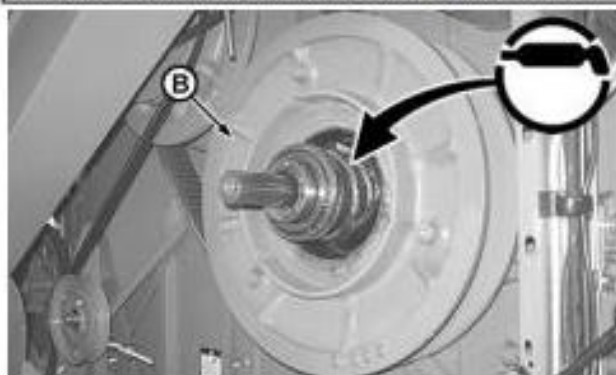
This service manual contains important information for the maintenance, troubleshooting and servicing of the **John Deere 1450CWS, 1550CWS (SN.060063-) CIS Combines Diagnostic & Repair Technical Manual(TM800019)**

In this manual you will find detailed specifications, illustrations, schematics, diagrams and step-by-step procedures to properly service and diagnose the machine to the manufacturer's standards.

Contents:

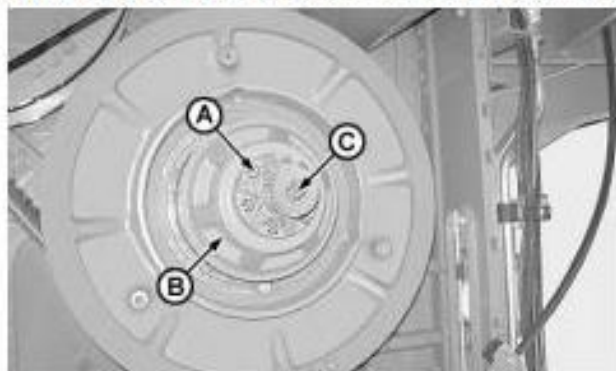
- General Information
- Specifications
- Serial Number Location
- Engine Specifications
- Engine Diagnostics
- Engine Tests and Adjustments
- Engine Repair
- Power Train
- Transmission
- Axles
- Differential
- PTO
- Hydraulic System
- Electrical System
- Electrical Tests and Diagnostics
- Wiring Diagram / Schematic
- Ignition and Charging
- Steering
- Brakes
- Wheels
- Operator's Platform
- Body Panels
- Disassembly and Assembly
- Diagnostics, Tests and Adjustments
- Troubleshooting
- and much more...

Please note this manual is in **downloadable PDF format only**. If you have any questions about this product or would like to request sample pages, please contact us and reference the product name or SKU.

**Outer pulley half**

Number	Name	Use
• MOBILITH AW 2 (us)	Grease	Used for lubricating components of threshing cylinder speed variator

[2] - Install attaching bolts (A) of hub (B) and tighten to specification.

**LEGEND:**

A	Bolts (6 used)
B	Hub
C	Bolt

Hub attaching bolts**Item**

Attaching bolts for installing hub on lower pulley

Measurement

Torque

Specification

40 N·m (29.5 lb·ft)

[3] - Install attaching bolt (C) of lower pulley of threshing cylinder speed variator, tighten to specification.

Item

Attaching bolt of lower pulley

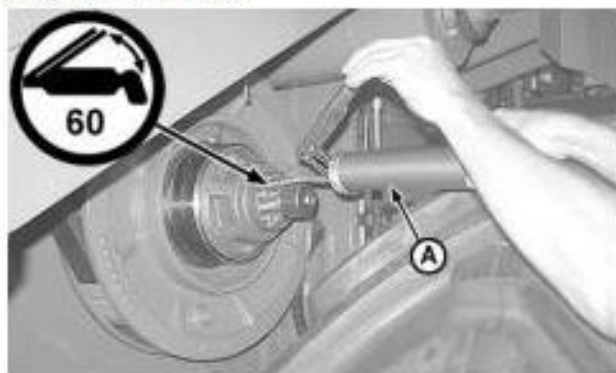
Measurement

Torque

Specification

47 N·m (35 lb·ft)

[4] - Lubricate lower pulley of variator with approximately sixty applications of MOBILITH AW 2 grease. Use DQ02588 grease pump (A) to lubricate.

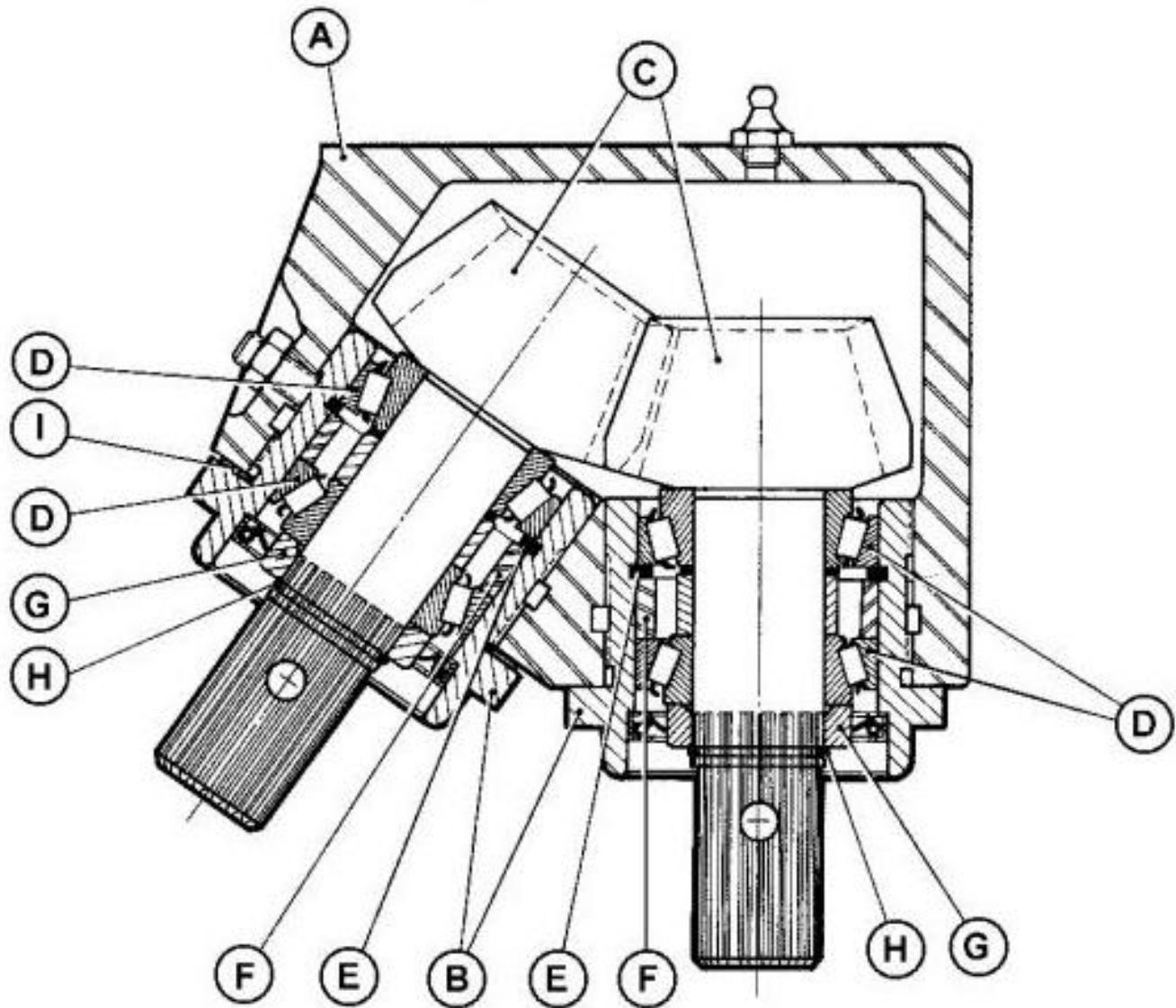
**LEGEND:**

A	Grease pump (DQ02588)
---	-----------------------

Lubrication**→NOTE:**

The grease pump comes with the machine and is stored in the tool box located at the back ladder of the machine.

Unloading Auger Drive - Repair



CQ199870

Unloading Auger Drive

LEGEND:

A	Drive housing
B	Bearing housing
C	Bevel gears
D	Taper roller bearings
E	Snap ring
F	Spacer
G	Shrink-fit ring
H	Snap ring
I	Washers

[1] - Disassemble and repair auger drive, using the above diagram as a guide.

[2] - Re-install and lubricate bevel gears.



Thank you very much
for your reading.
Please click here
to get more information.