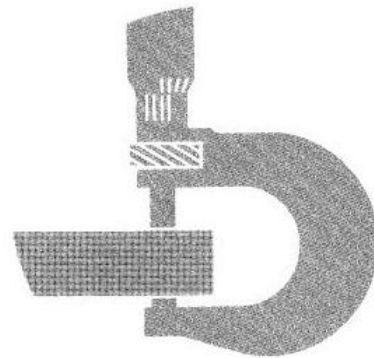


# John Deere 2355, 2555, 2755, 2855N Tractors Service Repair Manual (tm4434)

**2355, 2555,  
2755 and 2855N  
Tractors**



**TECHNICAL  
MANUAL**



**John Deere Werke Mannheim**  
**TM4434**  
Litho in U.S.A. (Nov-89)

**Covers:** 2355,2555,2755,2855N

**Type:** Service Manual

**Language:** English

**Pages:** 839

**Format:** PDF

**Features:** Bookmarked, searchable, printable

**Compatibility:** Windows/Mac/Tablet/Mobile

This service manual contains important information for the maintenance, troubleshooting and servicing of the **John Deere 2355, 2555, 2755, 2855N Tractors Service Repair Manual (tm4434)**

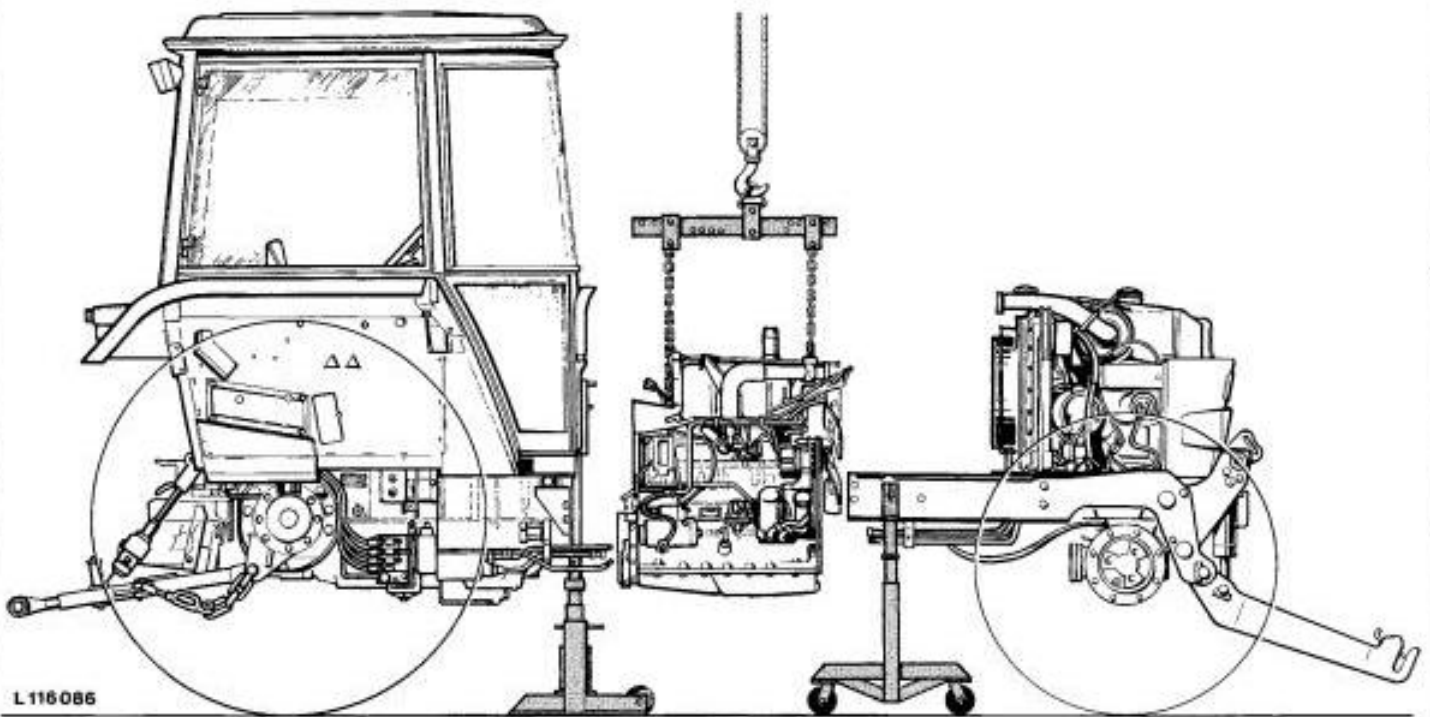
In this manual you will find detailed specifications, illustrations, schematics, diagrams and step-by-step procedures to properly service and diagnose the machine to the manufacturer's standards.

**Contents:**

- General Information
- Specifications
- Serial Number Location
- Engine Specifications
- Engine Diagnostics
- Engine Tests and Adjustments
- Engine Repair
- Power Train
- Transmission
- Axles
- Differential
- PTO
- Hydraulic System
- Electrical System
- Electrical Tests and Diagnostics
- Wiring Diagram / Schematic
- Ignition and Charging
- Steering
- Brakes
- Wheels
- Operator's Platform
- Body Panels
- Disassembly and Assembly
- Diagnostics, Tests and Adjustments
- Troubleshooting
- and much more...

Please note this manual is in **downloadable PDF format only**. If you have any questions about this product or would like to request sample pages, please contact us and reference the product name or SKU.

### REMOVING ENGINE



L116086-LB31025AE-010267

### SEPARATING BETWEEN ENGINE AND CLUTCH HOUSING

Refer to "Separating Between Engine and Clutch Housing".

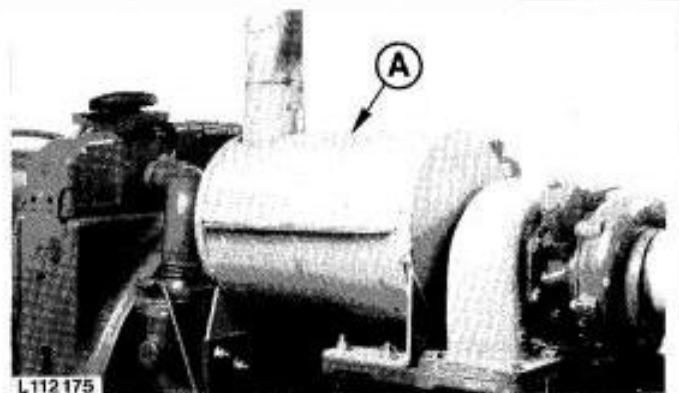
Disconnect battery ground straps.



L110906-LA11025BE-151085

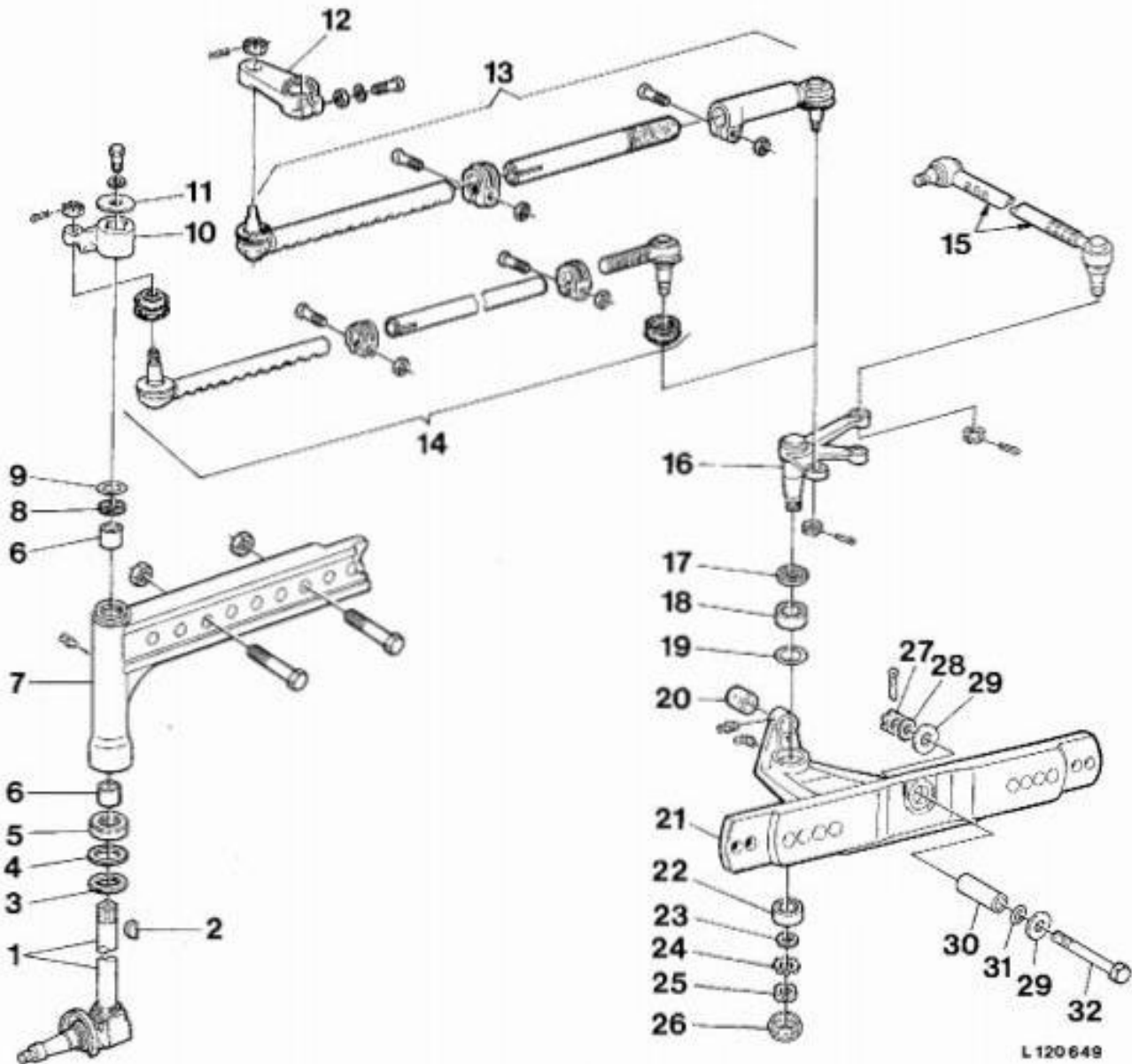
### REMOVING MUFFLER

Remove muffler (A).



L112175-LA11025AE-151085

**FRONT AXLE, EXPLODED VIEW  
(With Power Steering)**



L 120 649

- 1-Knuckle and spindle assy.
- 2-Key\*
- 3-Oil seal
- 4-Washer\*
- 5-Thrust bearing
- 6-Bushing
- 7-Axle knee, right-hand
- 8-Oil seal

- 9-Shim (use as required)\*\*
- 10-Steering arm, right-hand
- 11-Washer
- 12-Steering arm, right-hand\*
- 13-Tie rod assembly\*
- 14-Tie rod assembly
- 15-Drag link
- 16-Bell crank

- 17-Cover disk
- 18-Taper roller bearing
- 19-Shim (use as required)
- 20-Bushing
- 21-Front axle center
- 22-Taper roller bearing
- 23-Back-up washer
- 24-Locking tab

- 25-Grooved nut
- 26-Dust cap
- 27-Slotted nut
- 28-Washer
- 29-Washer
- 30-Pivot tube
- 31-Shim (use as required)
- 32-Special cap screw

\* With low-type axle  
 \*\* Not on low-type axle

*NOTE: The standard front axle illustrated here (with one row of holes) is also available as a heavy-duty version (with two rows of holes).*



Thank you very much  
for your reading.  
Please click here  
to get more information.