

## 2002 Doosan Solar 220LC-6 Crawled Excavator Service Repair Workshop Manual



PDF



DOWNLOAD





---

# Shop Manual

## DX190W-3 Excavator

---

Serial Number 1001 and Up

DOOSAN and the DOOSAN logo are registered trademarks of DOOSAN Corporation in the United States and various other countries around the world.



950106-00402E

June 2012

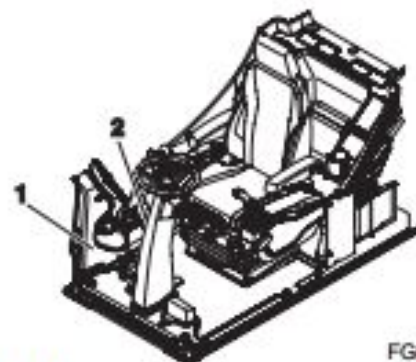
12. Remove mats from steps and floor.
13. Remove safety lever cover (1, Figure 2).
14. Remove two screws (2, Figure 2) in safety lever to remove lever.



FG025918

Figure 2

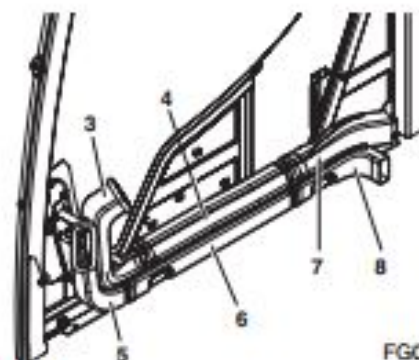
15. Remove duct covers (1 and 2, Figure 3).



FG025919

Figure 3

16. Remove air ducts (3 thru 8, Figure 4) on right-hand side of operator's cabin.
17. Disconnect monitor and sun sensor connectors.
18. Disconnect washer hose from floor plate.



FG015886

Figure 4

19. Remove glove box pad (1, Figure 5), and two bolts under pad.
20. Remove three caps (2, Figure 5) from top of rear cover. Remove three bolts securing rear cover in place.
21. Remove two bolts (3, Figure 5) from bottom of rubber mounts in rear cover.
22. Remove rear cover.



FG015887

Figure 5



# REMOVAL

## WARNING

### AVOID DEATH OR SERIOUS INJURY

Death or serious injury can occur from a counterweight falling during removal or installation. Do not allow personnel under or around the counterweight during removal or installation.

Use certified cables and shackles of adequate load rating. Improper lifting can allow the load to shift and cause death or serious injury.

1. Park on firm and level ground.
2. Lower work tool or bucket to ground.
3. Stop engine.
4. Move safety lever to "UNLOCK" position.
5. Turn starter switch to "I" (ON) position.

## WARNING

### AVOID DEATH OR SERIOUS INJURY

If engine must be running while performing maintenance, use extreme care. Always have one person in the cabin at all times. Never leave the cabin with the engine running.

6. Fully stroke work levers (joysticks) in all directions to relieve any pressure from accumulators.
7. Move safety lever to "LOCK" position.
8. Turn key to "O" (OFF) position and remove from starter switch.
9. Attach maintenance warning tag on controls.
10. Turn battery disconnect switch to "OFF" position.
11. Make sure all electrical and other items are disconnected.
12. Using a suitable lifting device capable of handling a heavy load, partially support counterweight (1, Figure 5) before loosening four bolts (2, Figure 5). Stop lifting with assist crane as soon as lifting slings are taut.
13. Remove four bolts (2, Figure 5) and washers (3) from counterweight (1).

**NOTE:** Heat bolts, if necessary, to free them.

14. When bolts (2, Figure 5) and washers (3) have been removed, lift counterweight (1) a very short distance above support frame (4) and stop. Check slings and make sure counterweight is being supported evenly.



Figure 4

FG025917

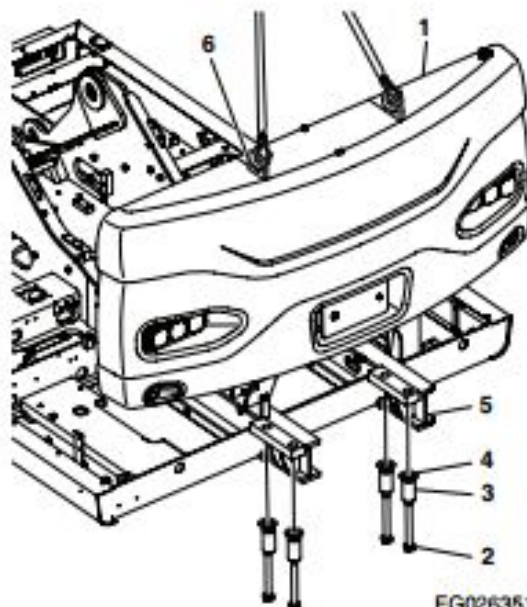


Figure 5

FG026351



Thank you very much  
for your reading.  
Please click here  
to get more information.