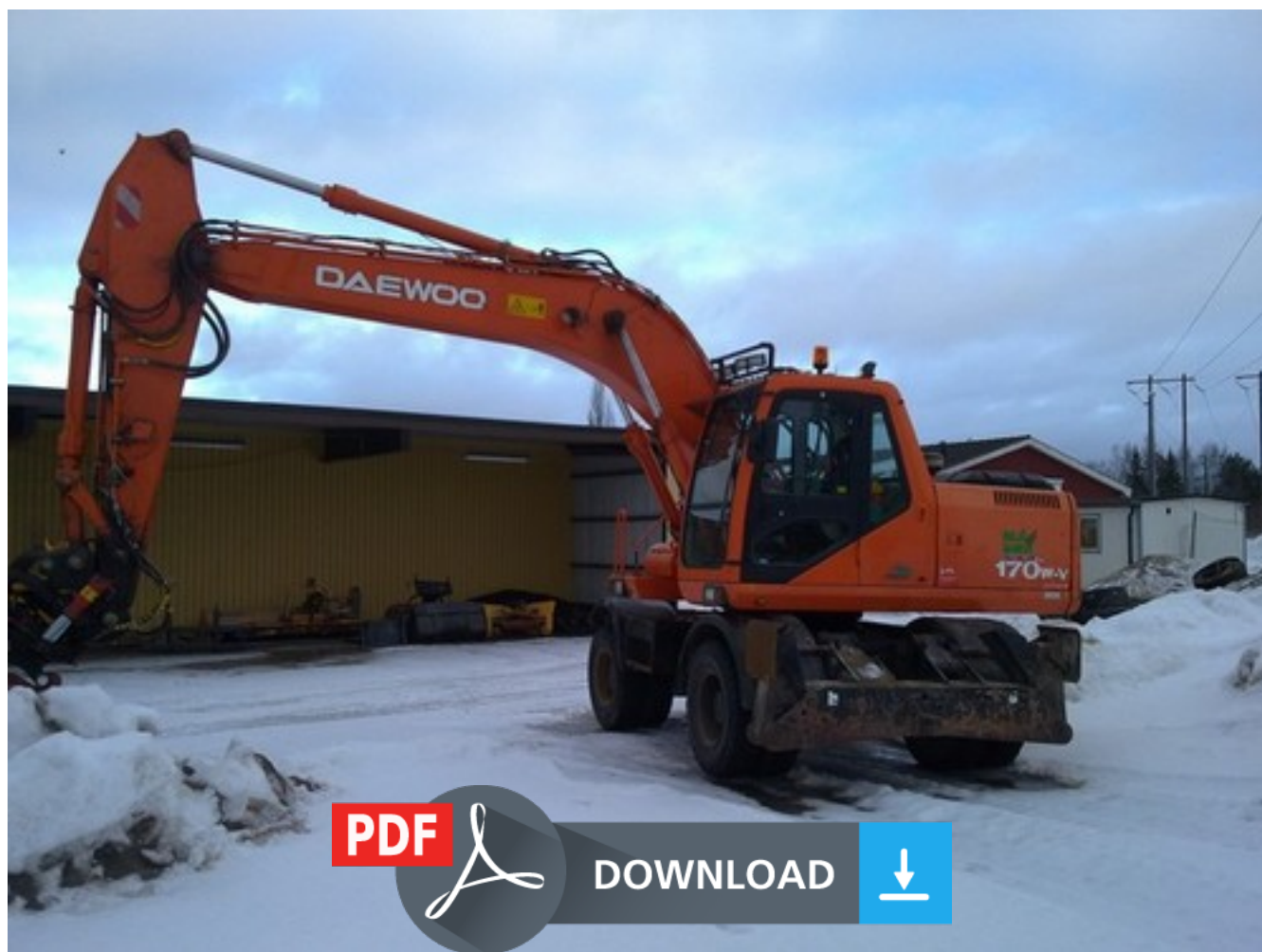


2006 Doosan DX225NLC Crawled Excavator Service Repair Workshop Manual



Solar 170W-V

Shop Manual

023-00029E

Serial Number 1001 and Up

January 2001

Daewoo reserves the right to improve our products in a continuing process to provide the best possible product to the market place. These improvements can be implemented at any time with no obligation to change materials on previously sold products. It is recommended that consumers periodically contact their distributors for recent documentation on purchased equipment.

This documentation may include attachments and optional equipment that is not available in your machine's package. Please call your distributor for additional items that you may require.

Illustrations used throughout this manual are used only as a representation of the actual piece of equipment, and may vary from the actual item.

5. Fix final drive by means of the two bearing pins.

NOTE: Insert shims (Arrow) on the upper bearing pin.

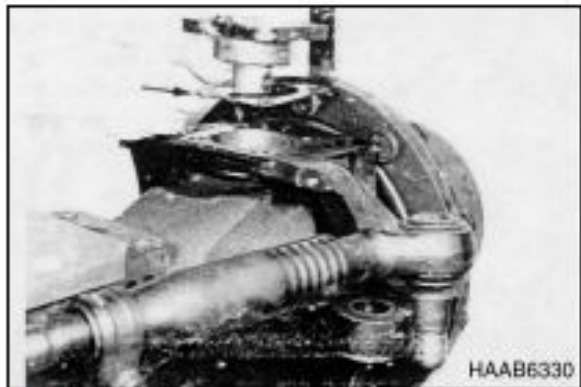


Figure 287

Version "B"

1. Fix final drive by means of two bearing pins.

NOTE: Insert shim (arrow) on the upper-bearing pin. Cover collar of bearing pin with anti-corrosive agent (Never Seez).

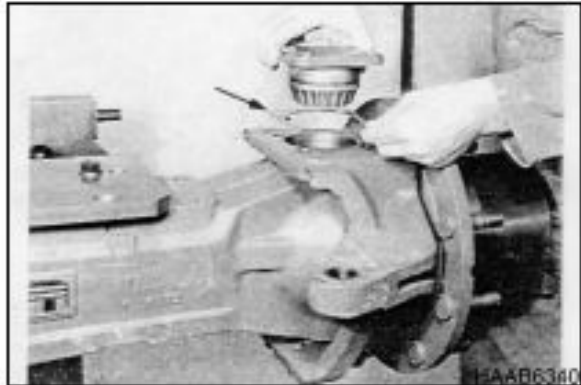


Figure 288

2. Fasten bearing pins by means of hex. head screws.

NOTE: Torque limit 28.55 kg•m (206.52 ft lbs).

NOTE: Pay attention to the installation position of the bearing pins. Grease nipple is facing the axle center.

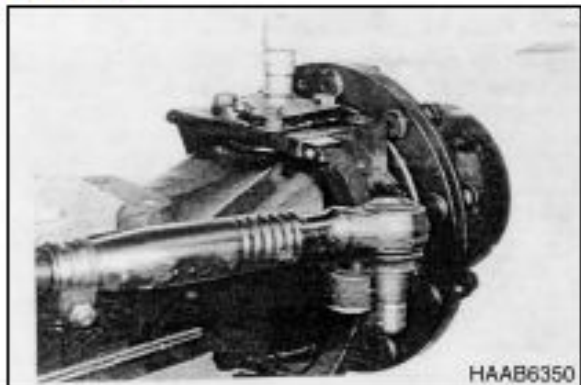


Figure 289

Install Tie Rod

1. Engage tie rod in the steering knuckle hull.
2. Tighten the castle nut and secure it by means of the cotter pin.

NOTE: Torque limit 30.59 kg•m (221.27 ft lbs).

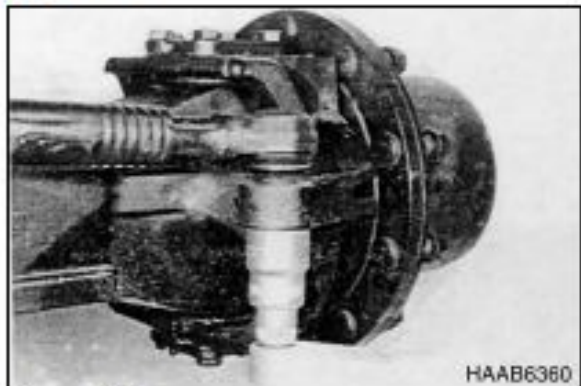


Figure 290

5. Remove second tie rod and stop ring.

Version - Tie Rod "Without" Stop Ring for Steering Lock

1. Heat bolting piston rod/ axial joint.
2. Loosen bolting and remove complete tie rod.

NOTE: *Disassemble second tie rod accordingly.*

(S) Hot-air blower - 220 V - 5870 221 500

(S) Hot-air blower - 110 V - 5870 221 501

REMOVE PISTON AND CYLINDER

1. Loosen hex. head screws and pull off guide II.
2. If necessary, remove sealing elements.

NOTE: *Pay attention to the released shim.*

3. Pull piston rod out of the cylinder.

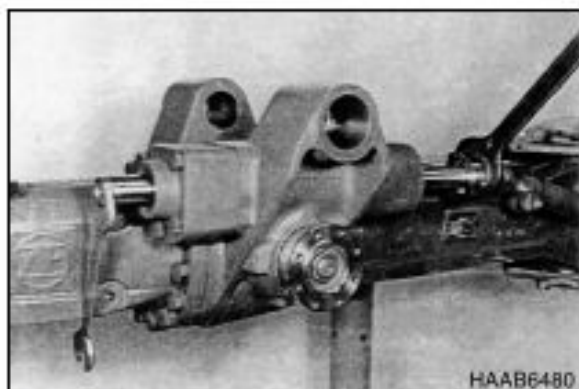


Figure 302

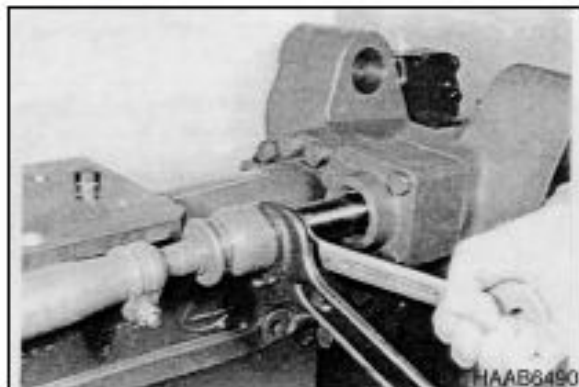


Figure 303

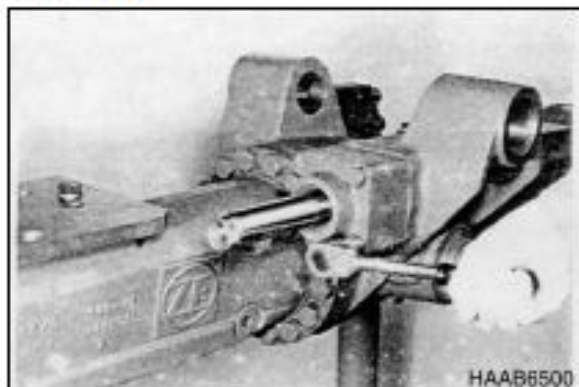


Figure 304

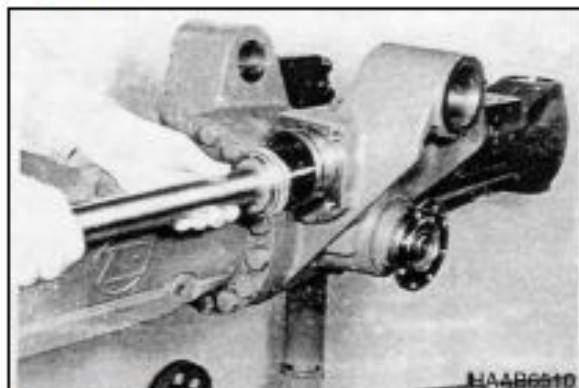


Figure 305



Thank you very much
for your reading.
Please click here
to get more information.