

# 2008 Doosan DX350LC Crawled Excavator Service Repair Workshop Manual



# **DX350LC**

Shop Manual

K1046036E

Serial Number 5980 and Up

*DOOSAN* reserves the right to improve our products in a continuing process to provide the best possible product to the market place. These improvements can be implemented at any time with no obligation to change materials on previously sold products. It is recommended that consumers periodically contact their distributors for recent documentation on purchased equipment.

This documentation may include attachments and optional equipment that is not available in your machine's package. Please call your distributor for additional items that you may require.

Illustrations used throughout this manual are used only as a representation of the actual piece of equipment, and may vary from the actual item.

### Noise and Abnormal Sound Test

1. Upon the completion of the pneumatic test, pour gear oil of 5 l into the reduction gear and engage the test motor.

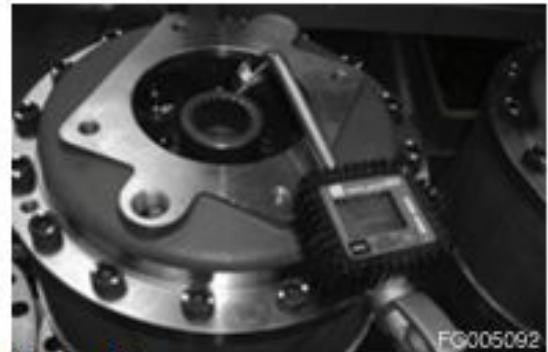


Figure 105



Figure 106

2. Start the motor up to 1400 RPM and use a noise measuring machine to carefully measure its noise level which should be below 90 dB and not include abnormal sound.



Figure 107

# FRONT IDLER ROLLER

## Parts List

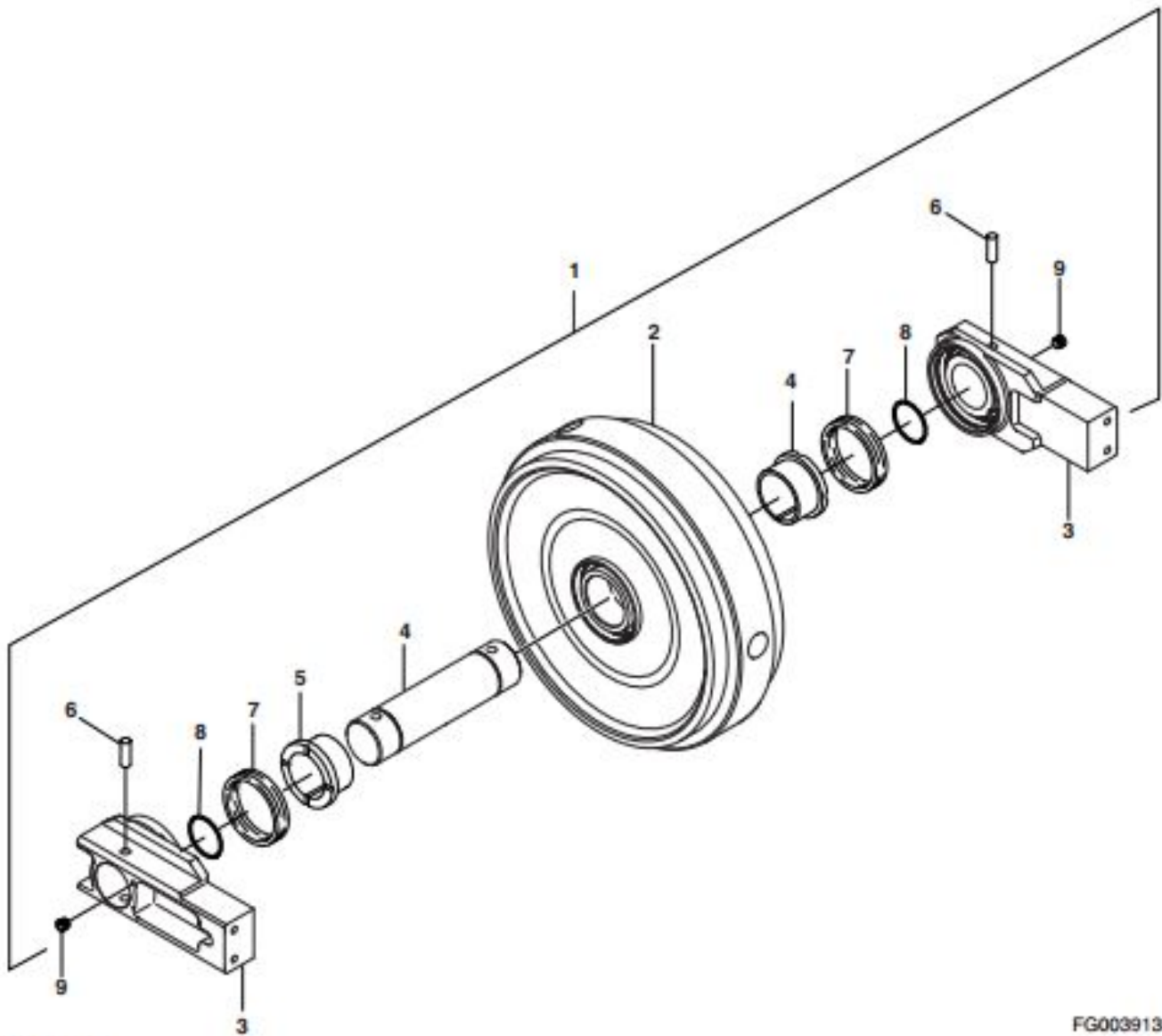


Figure 14

FG003913

Reference Number	Description
1	Idler Assembly
2	Idler
3	Bearing
4	Shaft
5	Bushing

Reference Number	Description
6	Pin
7	Floating Seal
8	O-ring
9	Plug



Thank you very much  
for your reading.  
Please click here  
to get more information.