

2014 Doosan DX225LC-5 Crawled Excavator Service Repair Workshop Manual



Solar 225LC-V

Shop Manual

023-00058E

Serial Number 1001 and Up

October 2002

DOOSAN reserves the right to improve our products in a continuing process to provide the best possible product to the market place. These improvements can be implemented at any time with no obligation to change materials on previously sold products. It is recommended that consumers periodically contact their distributors for recent documentation on purchased equipment.

This documentation may include attachments and optional equipment that is not available in your machine's package. Please call your distributor for additional items that you may require.

Illustrations used throughout this manual are used only as a representation of the actual piece of equipment, and may vary from the actual item.

15. Reinstall brake springs, making sure that each gets fully seated on piston.



Figure 42

16. Tap roller bearing (444) race back into upper valve casing (303), using hammer and copper rod specified in tool list.



Figure 43

17. Assemble valve plate (131), O-ring and upper valve casing (303). Refer to assembly that shows "R" part (2, Figure 44) of the valve plate turned away from mounting flanges (1) on side of valve plate. Lightly grease O-ring to help keep it in place during assembly.

Reference Number	Description
1	Flange Side
2	R Port

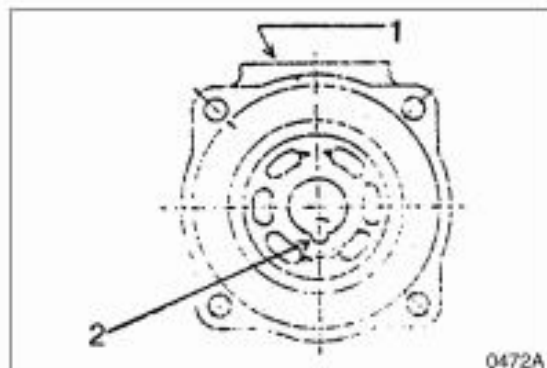


Figure 44

18. Bolt up two halves of motor casing (301 and 303, Figure 5). Be careful not to lose or damage O-ring. Tighten four 20 mm socket head bolts using a progressive, even rotation. Make sure that all brake springs are fully seated and that valve casing inlet and output ports are correctly matched.



Figure 45

TRAVEL MOTOR PARTS LIST

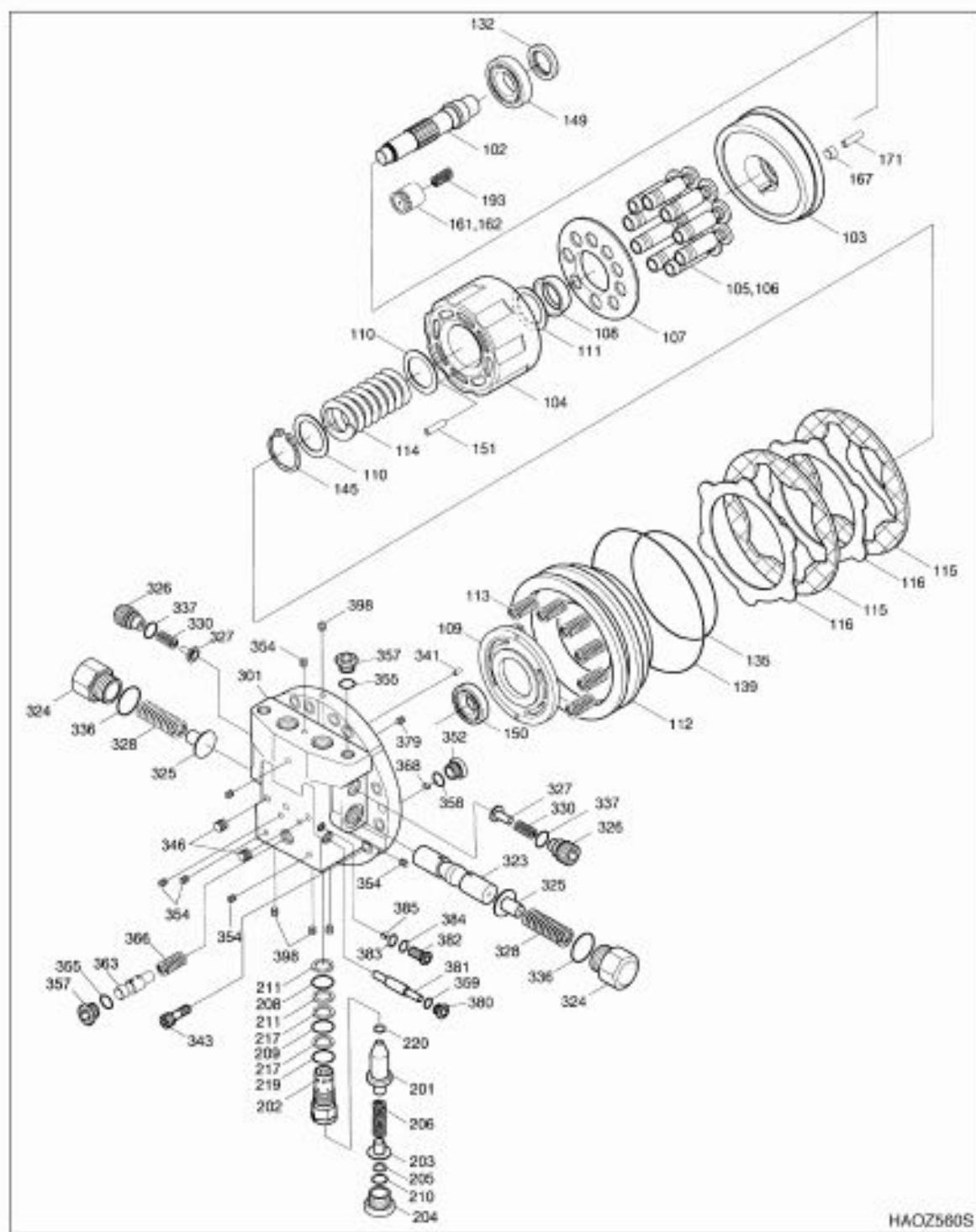


Figure 12



Thank you very much
for your reading.
Please click here
to get more information.