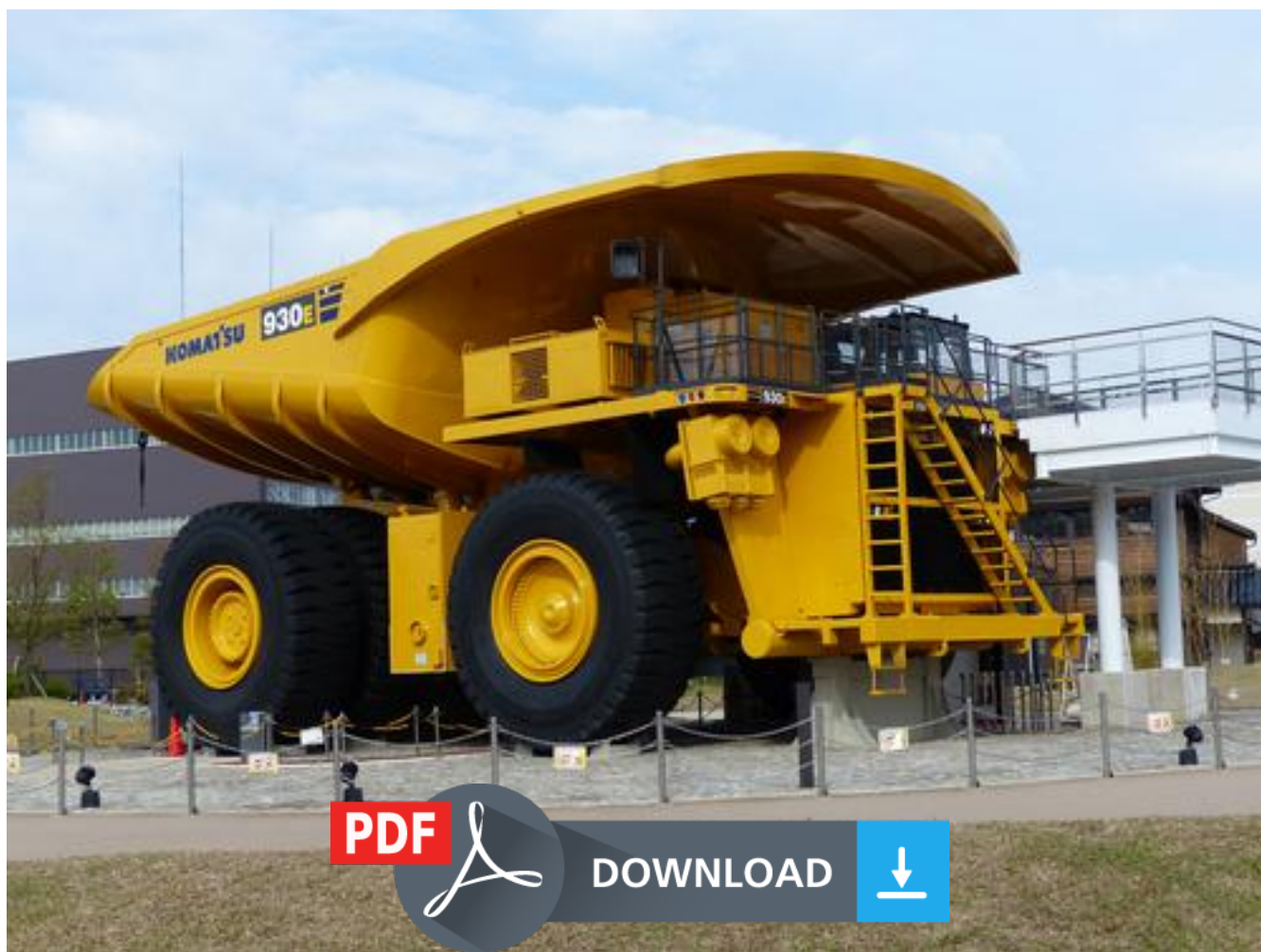


KOMATSU PC340LC-7K,PC340NLC-7K Hydraulic Excavator Service Repair Workshop Manual



SHOP MANUAL

KOMATSU

PC340LC, 340NLC-7K

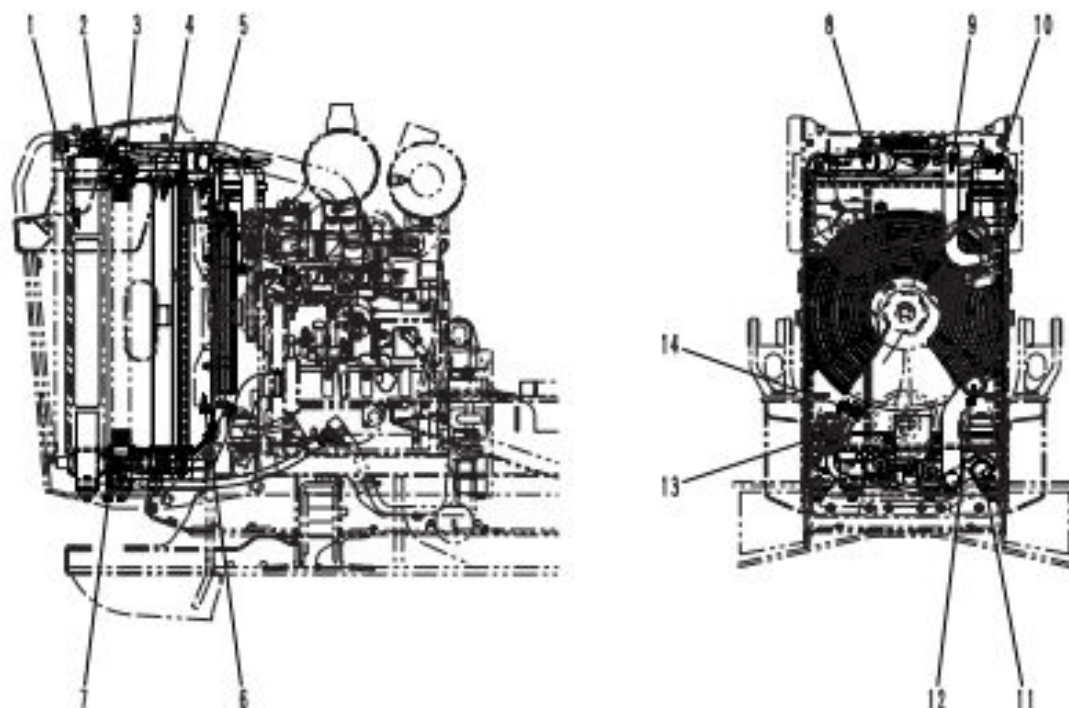
MACHINE MODEL**PC340LC-7K****PC340NLC-7K****SERIAL NUMBER****K40001 AND UP****K40001 AND UP**

- This shop manual may contain attachments and optional equipment that are not available in your area. Please consult your local Komatsu distributor for those items you may require. Materials and specifications are subject to change without notice.
- PC340LC/NLC-7K mount the SAA6D114E engine. For details of the engine, see the 114 Series Engine Shop Manual.

CONTENTS

	No. of page
01 GENERAL	01-1
10 STRUCTURE AND FUNCTION, MAINTENANCE STANDARD	10-1
20 TESTING AND ADJUSTING	20-1
30 DISASSEMBLY AND ASSEMBLY	30-1
90 OTHERS	90-1

COOLING SYSTEM



9J800005

1. Radiator
2. Radiator cap
3. Oil cooler
4. After cooler
5. Shroud
6. Fan
7. Drain valve

8. After cooler outlet port
9. Radiator inlet port hose
10. Reservoir tank
11. After cooler inlet port
12. Radiator outlet port hose
13. Oil cooler inlet port hose
14. Oil cooler outlet port tube

Specifications

Item	Unit	Radiator	Oil cooler	After cooler
Core type	—	D-5	SF-3	AL-CFT
Fin pitch	mm	3.0	3.0	6.0/2
Total heat dissipation area	m ²	34.05	12.35	11.44
Pressure valve cracking pressure	kPa {kg/cm ² }	88.3 ± 14.7 {0.9 ± 0.15}	—	—
Vacuum valve cracking pressure	kPa {kg/cm ² }	0 - 4.9 {0 - 0.05}	—	—



Thank you very much
for your reading.
Please click here
to get more information.