

# KOMATSU PW200-7H,PW220-7H Wheeled Excavators Service Repair Workshop Manual[VEBM370100]



# SHOP MANUAL

## **KOMATSU**

# PW200-7H PW220-7H

**MACHINE MODEL**

**PW200-7H**

**PW220-7H**

**SERIAL NUMBER**

**H50051 AND UP**

**H50051 AND UP**

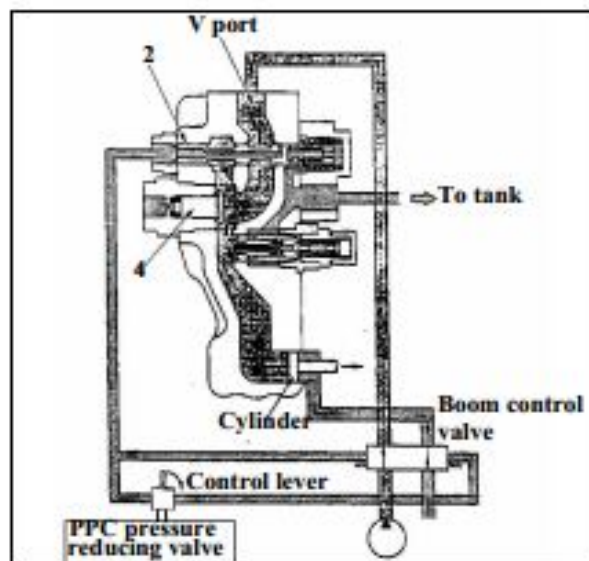
- This shop manual may contain attachments and optional equipment that are not available in your area. Please consult your local Komatsu distributor for those items you may require. Materials and specifications are subject to change without notice.
- PW200/PW220-7H mount the SAA6D102E-2 engine. For details of the engine, see the 102 Series Engine Shop Manual.

# CONTENTS

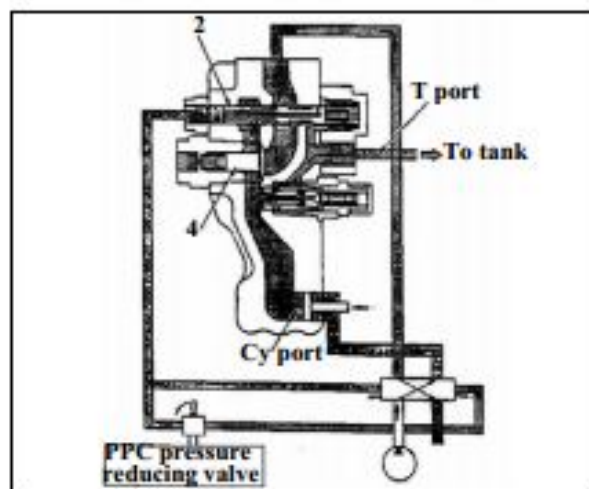
	No. of page
<b>01 GENERAL</b> .....	01-1
<b>10 STRUCTURE, FUNCTION AND MAINTENANCE STANDARD</b> .....	10-1
<b>20 TESTING AND ADJUSTING</b> .....	20-1
<b>30 DISASSEMBLY AND ASSEMBLY</b> .....	30-1
<b>90 OTHERS</b> .....	90-1

**Operation****Boom Raise**

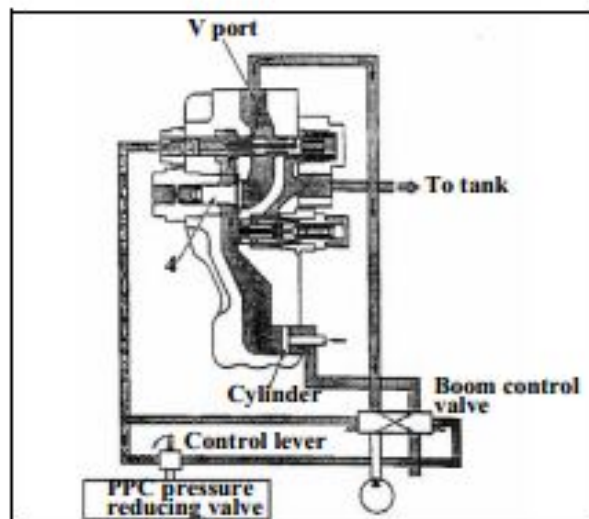
- During boom raising the pilot signal from wrist control operates control valve spool to direct high pressure oil to port V of hose burst valve.
- This pressure lifts check valve (4) from seat and high pressure oil flows in the bottom of the cylinder raising the boom.

**Boom Lower**

- During boom lowering the pilot signal reverses the flow through the control valve spool. High pressure oil flows to the head side of the cylinder. Oil in the bottom side of the cylinder flows through the port Cy of the valve. The pilot signal also opens the spool (2) of the hose burst valve and allows oil to flow back to tank.

**When hose burst occurs  
(operation to lower safety)**

- The sudden loss of pressure at port V will cause check valve (4) to re-seat and so the valve is locked.





Thank you very much  
for your reading.  
Please click here  
to get more information.