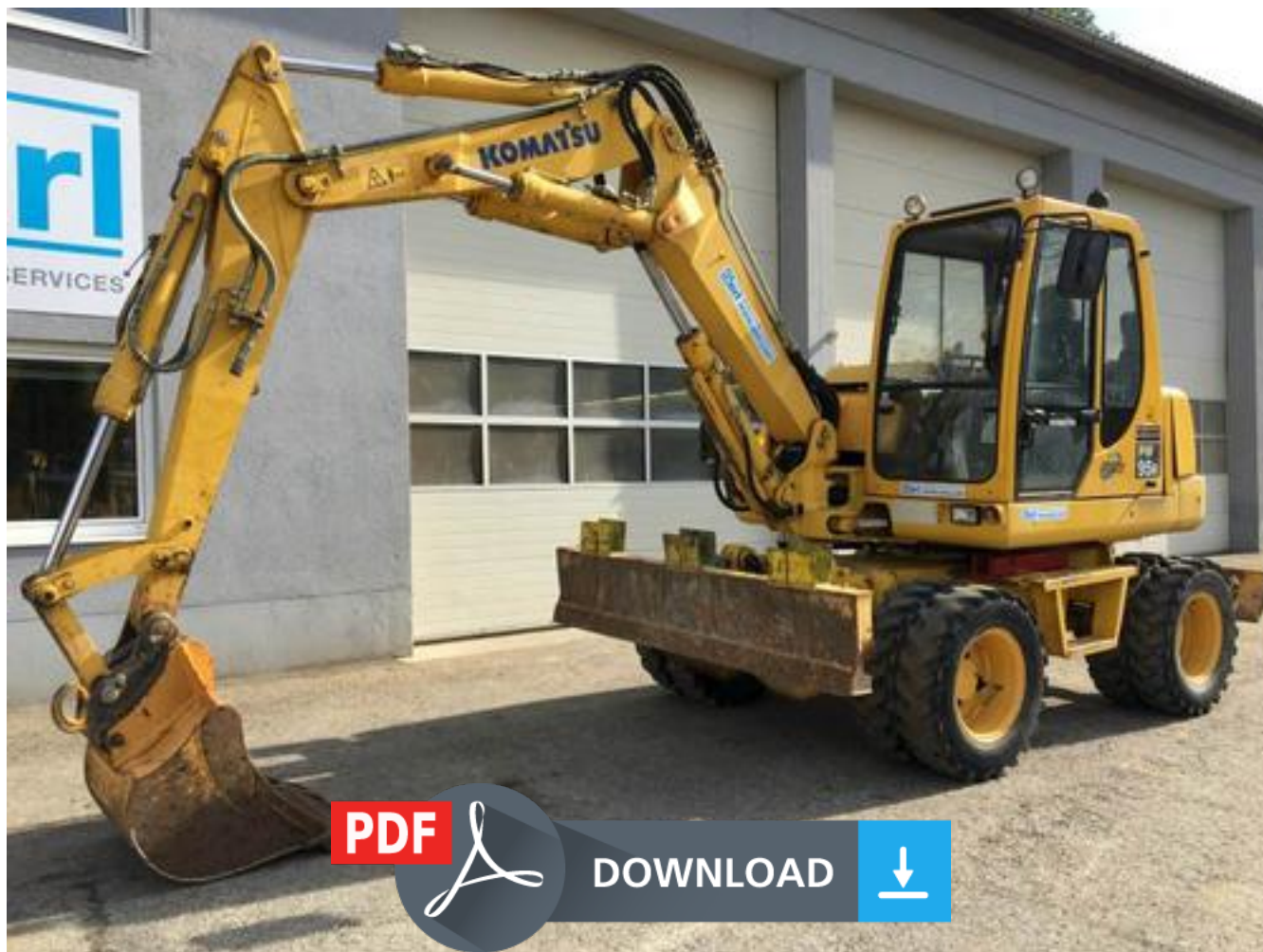


KOMATSU PW95R-2 Hydraulic Excavator Service Repair Workshop Manual[WEBM001800,WEBM001801,WEBM001802]



SHOP MANUAL



PW95R-2

HYDRAULIC EXCAVATOR

SERIAL NUMBER

PW95R-2 21D0210001and up

PW95R-2 21D0220001and up



CONTENTS

	Page
10 STRUCTURE AND FUNCTION.....	10-1
20 TESTING AND ADJUSTING	20-1
30 DISASSEMBLY AND ASSEMBLY.....	30-1
40 MAINTENANCE STANDARD.....	40-1

TESTING AND SETTING OF MAIN VALVES

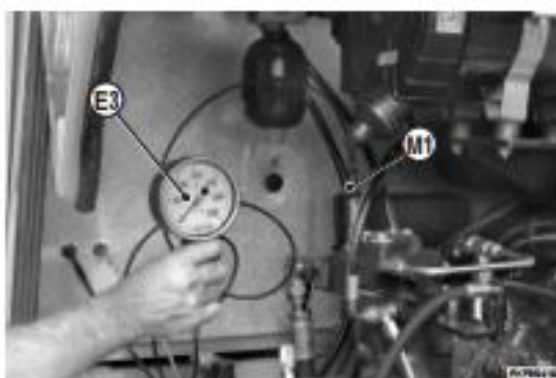
- ★ Check condition:
 - Engine: at working temperature
 - Engine idling MIN. and MAX.: within standard values
 - Hydraulic oil: 45–55°C
 - WORKING MODE selector: position P
 - Swing lock pin: applied.

⚠ Release the remain pressure from circuits.
 † (See «REMAIN PRESSURE REMOVAL FROM CIRCUITS»).

1. Main valve Section 1

⚠ Release the remain pressure from circuits.
 † (See «REMAIN PRESSURE REMOVAL FROM CIRCUITS»).

- 1 - Connect to pressure port **M1** the gauge **E3** (400 bar).
 - 2 - Start the engine and bring the accelerator on high idling speed position.
 - 3 - Acting on one of upper attachments (boom, arm, bucket) bring the piston rod at the end of its stroke and check that the pressure value reading on gauge is 275 ± 20 bar.
- ★ If the reading values on gauge are not the same as shown, proceed to main valves setting.



2. Main valve Section 2 and swing motor safety valve

- 1 - Connect to pressure port **M2** the gauge **E3** (400 bar).
 - 2 - Start the engine and bring the accelerator on high idling speed position.
 - 3 - Raise the blade up to the end of stroke and check that the gauge connected to port **M2** shows a pressure of 216 ± 20 bar.
 - 4 - Put the blade or the outrigger on the ground and make the upper structure swing on both directions; check that the gauge connected to port **M2** shows a pressure value of 190 ± 10 bar.
- ★ If the pressure values are lower than the value shown, check the safety valves of swing motor.





Thank you very much
for your reading.
Please click here
to get more information.