



# *SERVICE MANUAL*



# SHOP MANUAL

**KOMATSU**

# **WA100-1**

MACHINE MODEL    SERIAL No.

**WA100-1            10001 and up**

# CONTENTS

No. of page

## 10 ENGINE

11 STRUCTURE AND FUNCTION .....	11-1
12 TESTING AND ADJUSTING .....	12-1
13 DISASSEMBLY AND ASSEMBLY .....	13-1

## 20 POWER TRAIN

21 STRUCTURE AND FUNCTION .....	21-1
22 TESTING AND ADJUSTING .....	22-1
23 DISASSEMBLY AND ASSEMBLY .....	23-1
24 MAINTENANCE STANDARD .....	24-1

## 40 STEERING SYSTEM

41 STRUCTURE AND FUNCTION .....	41-1
42 TESTING AND ADJUSTING .....	42-1
43 DISASSEMBLY AND ASSEMBLY .....	43-1
44 MAINTENANCE STANDARD .....	44-1

## 50 BRAKE SYSTEM

51 STRUCTURE AND FUNCTION .....	51-1
52 TESTING AND ADJUSTING .....	52-1
53 DISASSEMBLY AND ASSEMBLY .....	53-1
54 MAINTENANCE STANDARD .....	54-1

## 60 WORK EQUIPMENT

61 STRUCTURE AND FUNCTION .....	61-1
62 TESTING AND ADJUSTING .....	62-1
63 DISASSEMBLY AND ASSEMBLY .....	63-1
64 MAINTENANCE STANDARD .....	64-1

## 80 ELECTRIC AND ELECTRONIC SYSTEM

81 STRUCTURE AND FUNCTION .....	81-1
82 TESTING AND ADJUSTING .....	82-1
83 DISASSEMBLY AND ASSEMBLY .....	83-1

## 90 OTHERS

91 STRUCTURE AND FUNCTION .....	91-1
93 DISASSEMBLY AND ASSEMBLY .....	93-1
97 GEAR PUMP .....	97-1

## TESTING AND ADJUSTING FUEL INJECTION TIMING

- ★ Measurement condition
- ★ Coolant temperature: Inside operating range.

Item	Standard value	Unit: degree
		Permissible value
Fuel injection timing	B.T.D.C. 16	$16 \pm 1$

### TESTING FUEL INJECTION TIMING

1. Disconnect fuel injection pipe (1) of No. 1 cylinder.
2. Remove delivery valve holder (2), then remove delivery valve (3) and spring (4), and install delivery valve holder (2) again.

 Delivery valve holder:  $4.25 \pm 0.25$  kgm

3. Place accelerator pedal at FULL position.
4. Operate priming pump and rotate crankshaft slowly in normal direction. Check point where fuel stops flowing from delivery valve holder (2).
5. Check that  $16^\circ$  I.J. line on crankshaft pulley (5) and pointer (6) are aligned at point where fuel stops flowing.

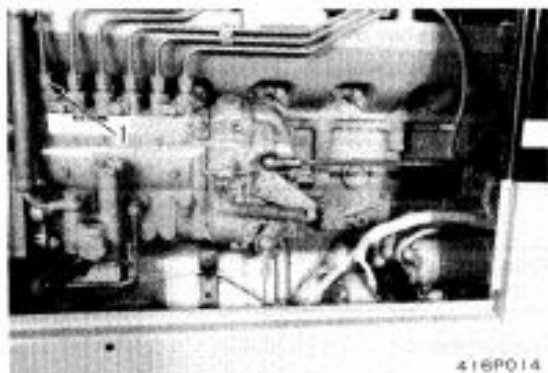
★ BEYOND injection timing line:  
Timing RETARDED

★ BEFORE injection timing line:  
Timing ADVANCED

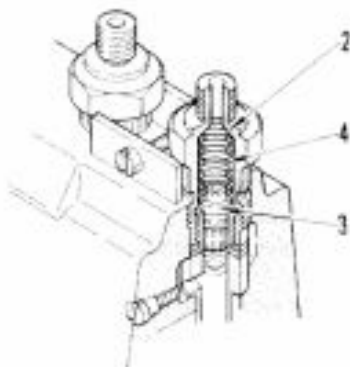
### ADJUSTING FUEL INJECTION TIMING

- ★ If the test shows that the fuel injection timing is incorrect, adjust as follows.

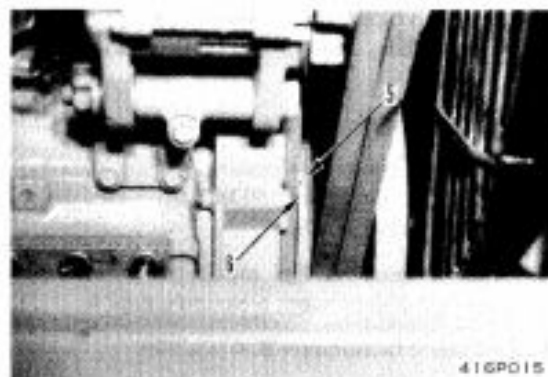
1. Loosen nut (7), (8) on the injection pump mounting bolt. (inside, outside each 2 bolts)
2. Move injection pump towards OUTSIDE to RETARD timing.  
Move injection pump towards CYLINDER BLOCK to ADVANCE timing.



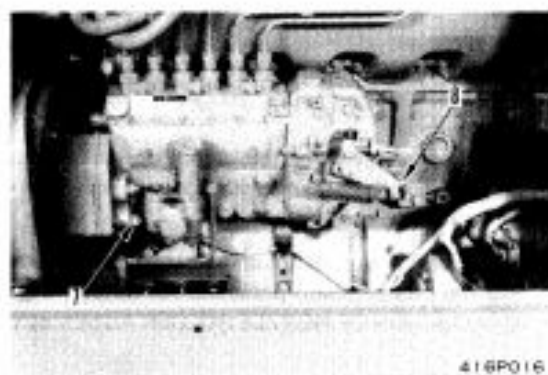
416P014



423F302



416P015



416P016



Thank you very much  
for your reading.  
Please click here  
to get more information.