

Please cut where indicated and insert the label into the plastic pocket on the spine of the binder.



**40 SERIES  
TRACTOR  
SERVICE**

**5640, 6640, 7740, 7840,  
8240, 8340**

Vol. 1  
40564061



**40 SERIES  
TRACTOR  
SERVICE**

**5640, 6640, 7740, 7840,  
8240, 8340**

Vol. 2  
40564061



# **POWERSTAR REPAIR MANUAL CONTENTS**

- PART 1 - ENGINE SYSTEM
- PART 2 - FUEL SYSTEM
- PART 3 - ELECTRICAL SYSTEMS
- PART 4 - CLUTCHES
- PART 5 - TRANSMISSION SYSTEMS
- PART 6 - POWER TAKE-OFF
- PART 7 - REAR AXLE AND BRAKES
- PART 8 - HYDRAULIC SYSTEMS
- PART 9 - STEERING SYSTEMS
- PART 10 - FRONT AXLE
- PART 11 - CAB
- PART 12 - SEPARATING THE TRACTOR

# FOREWORD

Appropriate service methods and correct repair procedures are essential for the safe, reliable operation of all equipment as well as the personal safety of the individual performing the repair.

This Repair Manual provides fault finding, overhaul and pressure testing instructions using recommended procedures and equipment. Following these instructions will ensure the safe, efficient and timely completion of the service or repair. Anyone who departs from these instructions should be aware that they do so at the risk of compromising their own personal safety and the safety of others.

Throughout this Manual you will see text in *italics*, preceded by the words **NOTE**, **IMPORTANT** or **WARNING**. Such text has the following significance.

**NOTE:** *This text stresses a correct operating procedure or technique.*

**IMPORTANT:** *This text stresses a correct operating technique or procedure that, if ignored, could result in damage to the tractor or equipment.*



**WARNING:** *This text stresses a correct operating technique or procedure that, if ignored, could result in personal injury or death to the Operator or bystanders.*

The Manual is divided into Parts, each sub-divided in turn into Chapters. Each Chapter contains information on general operating principles, detailed inspection, overhaul and where applicable, specific trouble shooting, special tools and specifications. Any reference in this Manual to right, left, rear, front, top or bottom, is as viewed from the Operator's seat, looking forward.

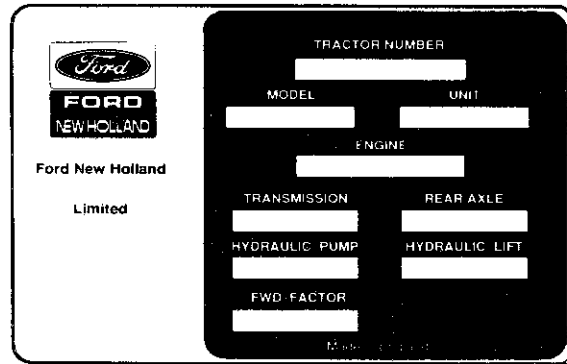
All data and illustrations in this Manual are subject to variations in build specification. This information was correct at the time of issue, but Ford New Holland policy is one of continuous improvement and the right to change specifications, equipment or design at any time, without notice, is reserved.

# PRODUCTION DATE CODES AND SERIAL NUMBERS

Series 40 Tractors have an identification plate located under the right-hand hood panel.

Whenever effecting a repair or overhaul, the relevant information should be noted and used when referring to Service Bulletins and/or the Parts Catalogue.

## TRACTOR IDENTIFICATION PLATE



358-176

This plate is stamped with the following information:

- **TRACTOR NUMBER** – Serial number prefixed by the letters 'BD'.
- **MODEL** – Production model code.
- **UNIT** – Production unit date code.
- **ENGINE** – Serial number and engine production date code.
- **TRANSMISSION** – Transmission production date code.
- **REAR AXLE** – Rear axle production date code.
- **HYDRAULIC PUMP** – Hydraulic pump production date code.
- **HYDRAULIC LIFT** – Hydraulic power lift production date code.
- **FWD FACTOR** – Four wheel drive factor.

### KEY TO PRODUCTION DATE CODES:-

First Number YEAR	First Letter MONTH	Second Number DAY OF MONTH	Second Letter PRODUCTION SHIFT
1-1991 2-1992 3-1993 4-1994 5-1995	A-Jan. G-July B-Feb. H-Aug. C-Mar. J-Sept. D-Apr. K-Oct. E-May L-Nov. F-June M-Dec.	01/28/29/30/31	A-Midnight B-Day C-Afternoon

Example of Production Unit Date Code 2 A 0 3 B

Year of  
Production (1992)

Month of Year  
(January)

Day of Month  
(Third)

Shift Period  
(Day)

**CAB, ROPS POST AND FOUR WHEEL DRIVE AXLE IDENTIFICATION PLATES**

<b>FORD NEW HOLLAND LTD ENGLAND</b>				
<b>OECD APPROVED SAFETY CAB</b>				
	MODEL NO	<input style="width: 150px;" type="text"/>	SERIAL NO	<input style="width: 200px;" type="text"/>
	TEST STATION	<input style="width: 80px;" type="text"/>	OECD NO	<input style="width: 200px;" type="text"/>
			GODK/NATIONAL APPROVAL	<input style="width: 200px;" type="text"/>
<b>GODKENDT AF DIREKTØREN FOR ARBEJDSTILSYNET</b>				

Figure 1

<b>Ford New Holland Inc. New Holland PA</b>	
ROPS No. <input style="width: 300px;" type="text"/>	
FOR TRACTORS (Max. Wt. lbs)	
5640 (9750) 6640 (11250) 7740 (12750)	
COMPLIES OSHA 1928, 53 ASAE S 336 SAE J168	
<b>Always Wear Seat Belt with ROPS</b>	
<small>A</small>	<small>FONN-94518N23-EB</small>

Figure 2

The cab/ROPS identification plate, Figure 1 and Figure 2, are located on the left-hand side of the "Cab" below the windscreen, or the right-hand side "ROPS" post (where fitted).

AXLE TYPE	SERIAL NUMBER	
<input style="width: 80px;" type="text"/>	<input style="width: 150px;" type="text"/>	
REF. NUMBER	TOTAL RATIO	
<input style="width: 150px;" type="text"/>	<input style="width: 150px;" type="text"/>	
INPUT ROT.	DIFF. TYPE	
<input style="width: 150px;" type="text"/>	<input style="width: 150px;" type="text"/>	
OIL SPECIFIC	LIT.	LOCATION
<input style="width: 150px;" type="text"/>	<input style="width: 40px;" type="text"/>	<input style="width: 60px;" type="text"/>
<input style="width: 150px;" type="text"/>	<input style="width: 40px;" type="text"/>	<input style="width: 60px;" type="text"/>
<input style="width: 250px;" type="text"/>		

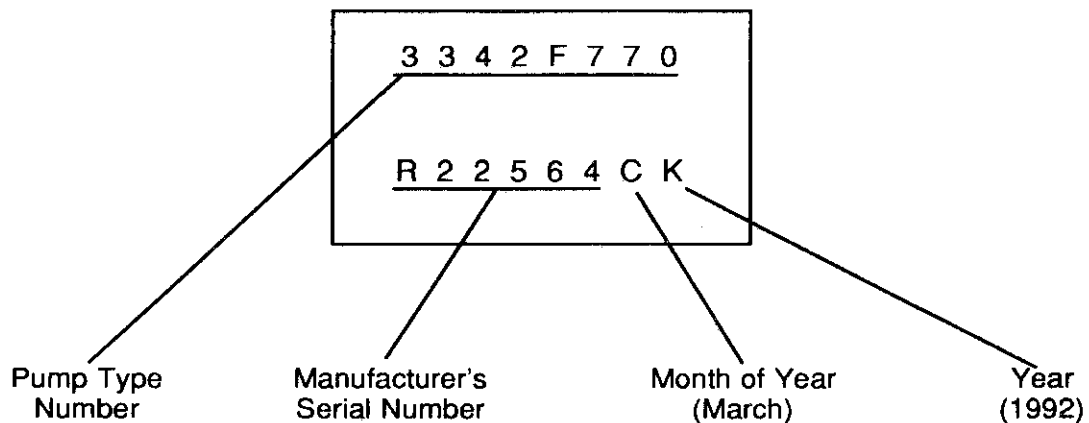
Figure 3

# FUEL INJECTION PUMP DATE CODES

The fuel injection pumps carry an identification plate with the pump type number, serial number and manufacturer's production date code. The date code can be identified by reference to the following chart:

MONTH	1991 – 1994 CODE	YEAR	CODE
January	A	1991	J
February	B		
March	C	1992	K
April	D		
May	E	1993	L
June	F		
July	G	1994	M
August	H		
September	J	1995	N
October	K		
November	L	1996	O
December	M		

Example of Fuel Injection Pump Identification Plate:--



# FORD



## Repair Manual – Series 40 Tractors

---

### HEALTH AND SAFETY







# HEALTH AND SAFETY

<b>Contents</b>	<b>Page</b>
HEALTH AND SAFETY	1
HEALTH AND SAFETY PRECAUTIONS	1
ADHESIVES AND SEALERS – see Fire	2
ANTIFREEZE – see Fire, Solvents e.g. Isopropanol, Ethylene Glycol, Methanol.	2
ARC WELDING – see Welding.	2
ASBESTOS – see Brake and Clutch Linings and Pads.	2
BATTERY ACIDS – see Acids and Alkalis.	2
BRAKE AND CLUTCH FLUIDS (Polyalkylene Glycols) – see Fire.	2
BRAKE AND CLUTCH LININGS AND PADS – see Legal Aspects.	2
BRAZING – see Welding.	3
CHEMICAL MATERIALS – GENERAL – see Legal Aspects.	3
DO'S	3
DO NOTS	3
CORROSION PROTECTION MATERIALS – see Solvents, Fire.	3
DUSTS	4
ELECTRIC SHOCK	4
EXHAUST FUMES	4
FIBRE INSULATION – see Dusts.	4
FIRE – see Welding, Foams, Legal Aspects.	4
FIRST AID	4
FOAMS – Polyurethane – see Fire.	5
FUELS – see Fire, Legal Aspects, Chemicals – General, Solvents.	5
GAS CYLINDERS – see Fire.	5
GENERAL WORKSHOP TOOLS AND EQUIPMENT	6
LEGAL ASPECTS	6
LUBRICANTS AND GREASES	6
PAINTS – see Solvents and Chemical Materials – General.	7
SOLDER – see Welding.	7
SOLVENTS – see Chemical Materials – General Fuels (Kerosene), Fire.	7
SUSPENDED LOADS	8
WELDING – see Fire, Electric Shock, Gas Cylinders.	8

## **HEALTH AND SAFETY PRECAUTIONS**

Many of the procedures associated with vehicle maintenance and repair involve physical hazards or other risks to health. This section lists, alphabetically, some of these hazardous operations and the materials and equip-

ment associated with them. The precautions necessary to avoid these hazards are identified.

The list is not exhaustive and all operations and procedures and the handling of materials, should be carried out with health and safety in mind.

**ACIDS AND ALKALIS** – see Battery acids, e.g. caustic soda, sulphuric acid.

Used in batteries and cleaning materials.

Irritant and corrosive to the skin, eyes, nose and throat. Causes burns.

Avoid splashes to the skin, eyes and clothing. Wear suitable protective gloves and goggles. Can destroy ordinary protective clothing. Do not breathe mists.

Ensure access to water and soap is readily available for splashing accidents.

**ADHESIVES AND SEALERS** – see Fire

Highly Flammable, Flammable, combustible.

Generally should be stored in "No Smoking" areas; cleanliness and tidiness in use should be observed, e.g. disposable paper covering benches; should be dispensed from applicators where possible; containers, including secondary containers, should be labelled.

**Solvent based Adhesives/Sealers** – See Solvents.

Follow manufacturers instructions.

**Water based Adhesives/Sealers**

Those based on polymer emulsions and rubber lattices may contain small amounts of volatile toxic and harmful chemicals. Skin and eye contact should be avoided and adequate ventilation provided during use.

Follow manufacturers instructions.

**Resin based Adhesives/Sealers** – e.g. epoxide and formaldehyde resin based.

Mixing should only be carried out in well ventilated areas as harmful or toxic volatile chemicals may be released.

Skin contact with uncured resins and hardeners can result in irritation; dermatitis and absorption of toxic or harmful chemicals through the skin. Splashes can damage the eyes.

Provide adequate ventilation and avoid skin and eye contact. Follow manufacturers instructions.

**Anaerobic, Cyanoacrylate and other Acrylic Adhesives**

Many are irritant, sensitizing or harmful to the skin. Some are eye irritants.

Skin and eye contact should be avoided and the manufacturers instructions followed.

Cyanoacrylate adhesives (super-glues) must not contact the skin or eyes. If skin or eye tissue is bonded cover with a clean moist pad and get medical attention. Do not attempt to pull tissue apart. Use in well ventilated areas as vapours can cause irritation of the nose and eyes.

For two-pack systems see Resin based adhesives/sealers.

**Isocyanate (Polyurethane) Adhesives/Sealers** – see Resin based Adhesives.

Individuals suffering from asthma or respiratory allergies should not work with or near these materials as sensitivity reactions can occur.

Any spraying should preferably be carried out in exhaust ventilated booths removing vapours and spray droplets from the breathing zone. Individuals working with spray applications should wear supplied air respirators.

**ANTIFREEZE** – see Fire, Solvents e.g. Isopropanol, Ethylene Glycol, Methanol.

Highly Flammable, Flammable, Combustible.

Used in vehicle coolant systems, brake air pressure systems, screenwash solutions.

Vapours given off from coolant antifreeze (glycol) arise only when heated.

Antifreeze may be absorbed through the skin in toxic or harmful quantities. Antifreeze if swallowed is fatal and medical attention must be found immediately.

**ARC WELDING** – see Welding.

**ASBESTOS** – see Brake and Clutch Linings and Pads.

**BATTERY ACIDS** – see Acids and Alkalis.

Gases released during charging are explosive. Never use naked flames or allow sparks near charging or recently charged batteries.

**BRAKE AND CLUTCH FLUIDS (Polyalkylene Glycols)** – see Fire.

Combustible.

Splashes to the skin and eyes are slightly irritating. Avoid skin and eye contact as far as possible. Inhalation of vapour hazards do not



Thank you very much  
for your reading.  
Please click here  
to get more information.