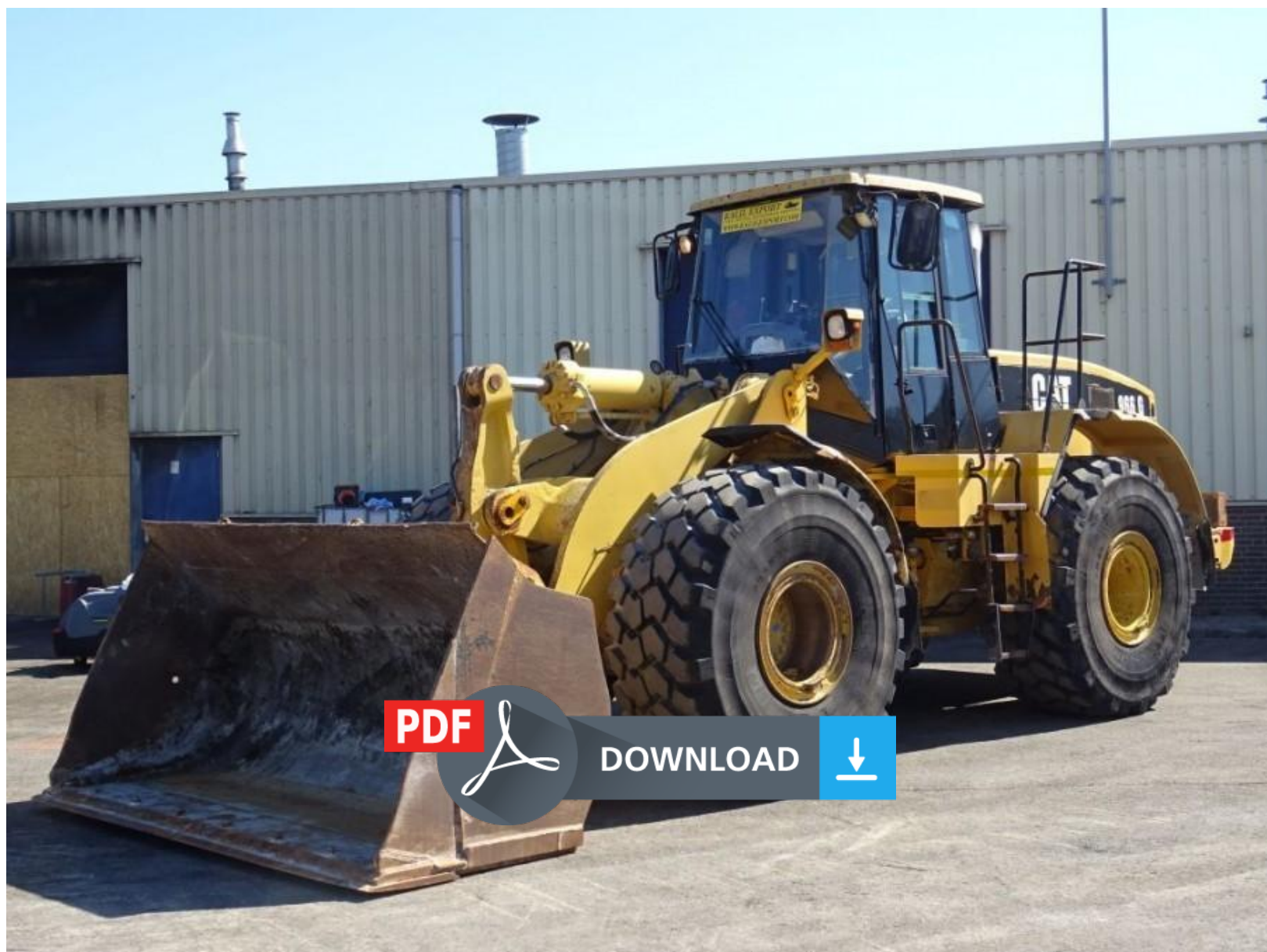


Caterpillar 966G II WHEEL LOADER Service Repair Manual AXL



Caterpillar 966G II WHEEL LOADER Service Repair Manual AXL

This Downloadable Manual covers every Service & Repair Procedure you will need. DESCRIPTION:
You

can now save yourself BIG money by doing your own repairs! This manual makes any service or repair job easy to do with very easy to follow step-by-step instructions & pictures on all areas of servicing & repairs.

Once
you have downloaded this manual it is yours to keep forever. You can print out one page, chapter or the whole thing. You can also download it to your tablet or smart phone if required.

MODELS

COVERED:

Caterpillar

966G II WHEEL LOADER General Service InformationCaterpillar

966G II WHEEL LOADER Disassembly and AssemblyCaterpillar

966G II WHEEL LOADER SpecificationsCaterpillar

966G II WHEEL LOADER System OperationCaterpillar

966G II WHEEL LOADER SchematicCaterpillar

966G II WHEEL LOADER Testing and AdjustingCaterpillar

966G II WHEEL LOADER TroubleshootingCaterpillar

966G II WHEEL LOADER Torque Specifications

CONTENTS:

This
high quality Service Repair Workshop Manual covers all repair procedures A-Z. Every repair and service procedure is covered.

COMPUTER

REQUIREMENTS: This

Downloadable Manual will work on All PC & MAC Computers, tablets, mobile phones Etc. The only software needed is adobe reader which in most cases is already loaded onto your computer, if not can be downloaded for free.

IMPORTANT

NOTICE:This

manual will be send within 8-10 hours emailed to the email address you used when checking out after receiving your payment by Bitcoin or PayPal.



Thank you very much
for your reading.
Please click here
to get more information.