

# John Deere 1107, 1109, 1111, 1113, 2109, 2111, 2115 Planters Technical Service Manual (TM8295)

643D Feller-Buncher  
Diagnostic



## OPERATION AND TEST MANUAL

Wheeled models 643D

TM1481 22 FEB 05 (ENGLISH)

**For complete service information also see:**

643D Feller-Buncher Repair

TM1482

Series 300, 3029, 4039, 4045, 6059 and 6068 Diesel Engines

CTM8

Alternators and Starting Motors

CTM77

Pump Drive Service Manual

CTM57



John Deere Construction and Forestry  
Printed by Belgreen



**Covers:** 1107,1109,1111,1113,2109,2111,2115

**Type:** Service Manual

**Language:** English

**Pages:** 336

**Format:** PDF

**Features:** Bookmarked, searchable, printable

**Compatibility:** Windows/Mac/Tablet/Mobile

This service manual contains important information for the maintenance, troubleshooting and servicing of the **John Deere 1107, 1109, 1111, 1113, 2109, 2111, 2115 Planters Technical Service Manual (TM8295)**

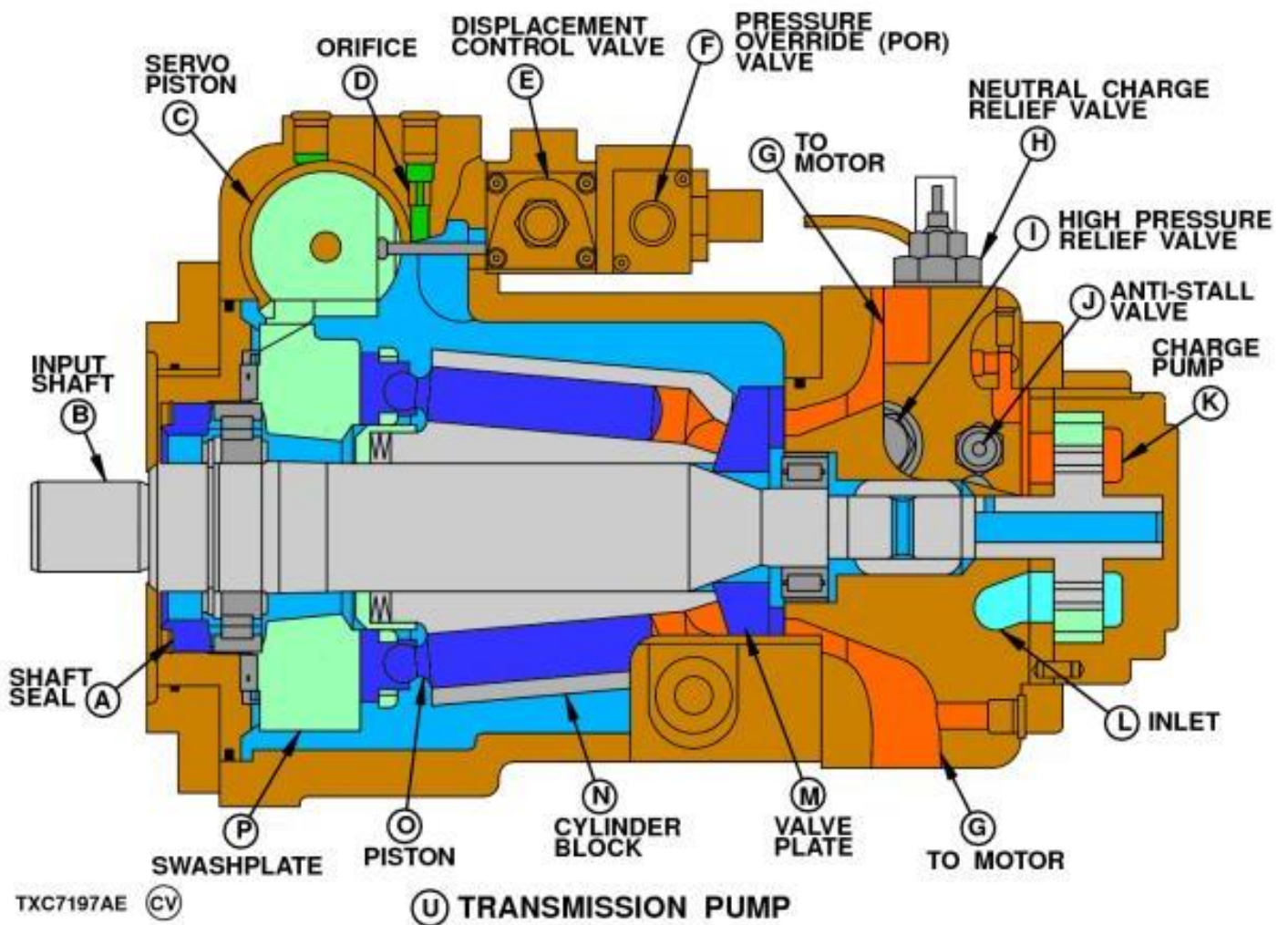
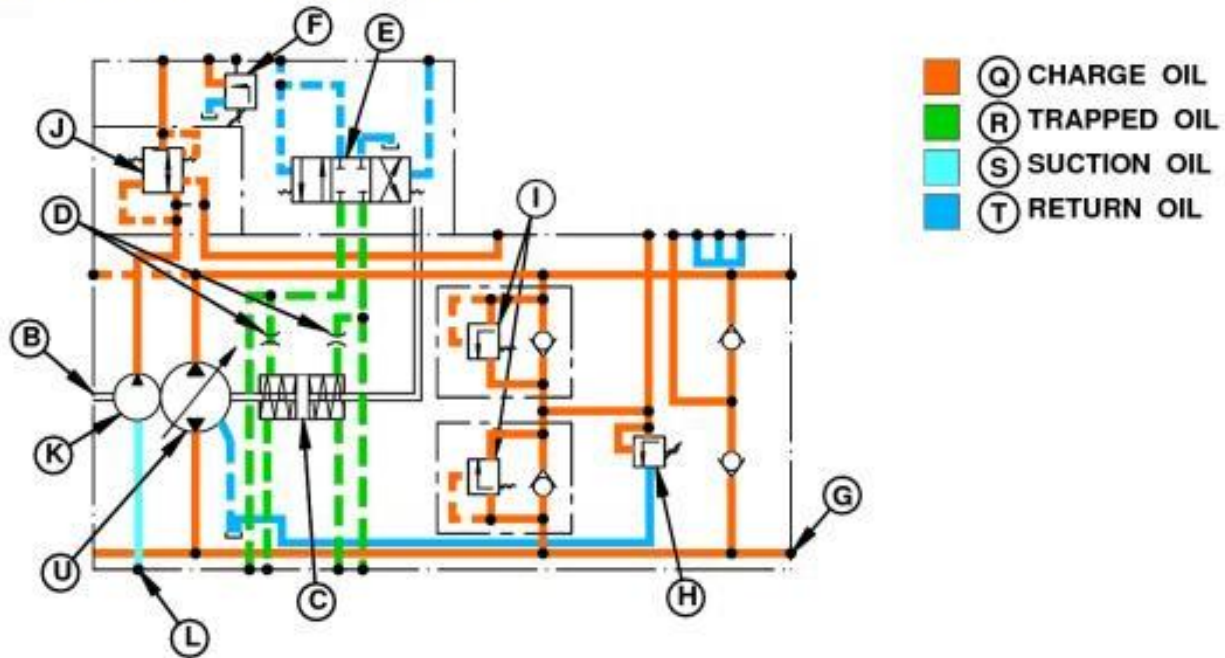
In this manual you will find detailed specifications, illustrations, schematics, diagrams and step-by-step procedures to properly service and diagnose the machine to the manufacturer's standards.

**Contents:**

- General Information
- Specifications
- Serial Number Location
- Engine Specifications
- Engine Diagnostics
- Engine Tests and Adjustments
- Engine Repair
- Power Train
- Transmission
- Axles
- Differential
- PTO
- Hydraulic System
- Electrical System
- Electrical Tests and Diagnostics
- Wiring Diagram / Schematic
- Ignition and Charging
- Steering
- Brakes
- Wheels
- Operator's Platform
- Body Panels
- Disassembly and Assembly
- Diagnostics, Tests and Adjustments
- Troubleshooting
- and much more...

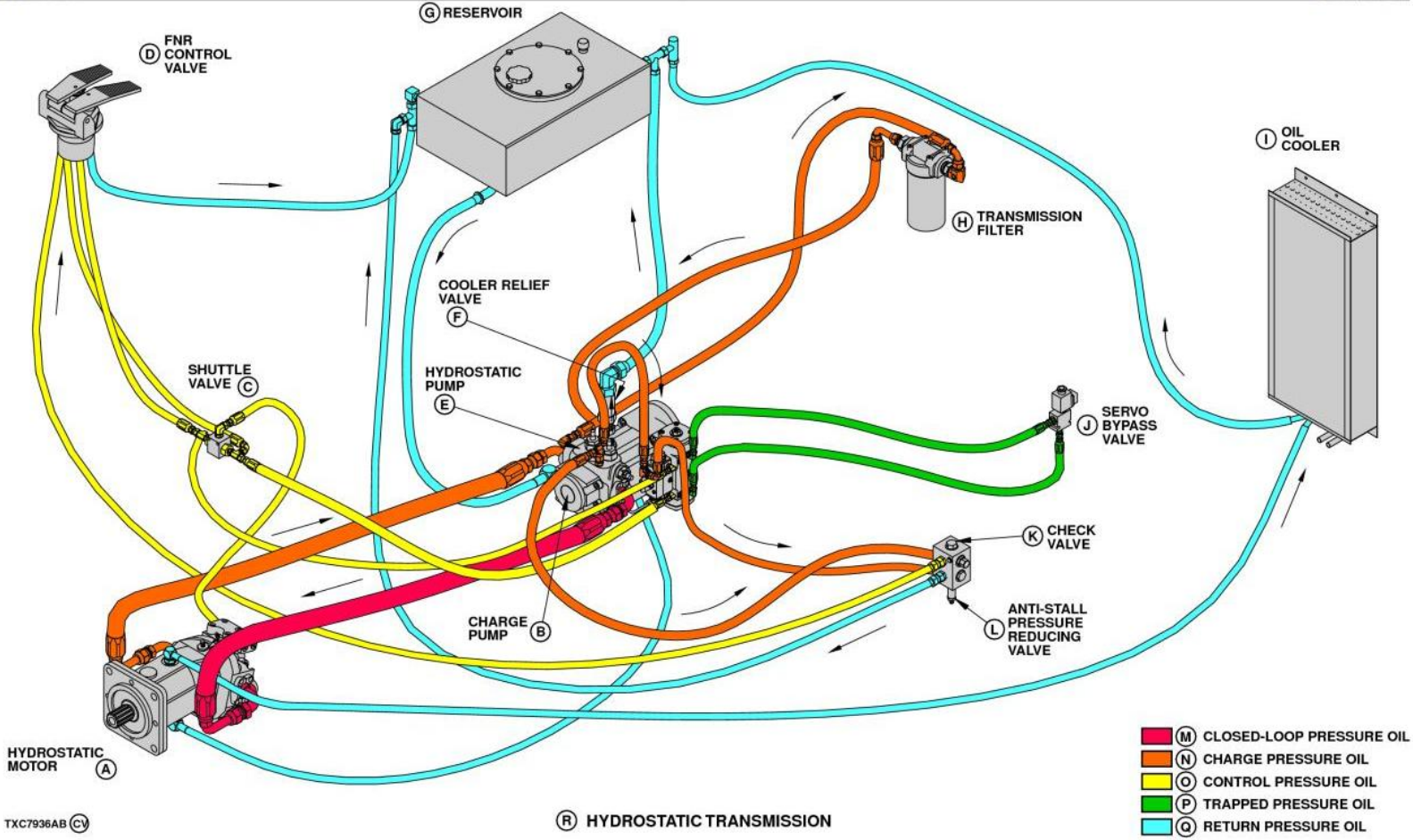
Please note this manual is in **downloadable PDF format only**. If you have any questions about this product or would like to request sample pages, please contact us and reference the product name or SKU.

## Hydrostatic Pump Operation



### Transmission Pump

The hydrostatic pump (U) in the 643D is similar in design to the pump used on the 643. It is manufactured by the same company, but is a larger capacity pump and the operation of some of the components is different. The pump is a swashplate design, variable displacement axial piston pump. It mounts to the pump drive gearbox and is driven at engine speed.





Thank you very much  
for your reading.  
Please click here  
to get more information.