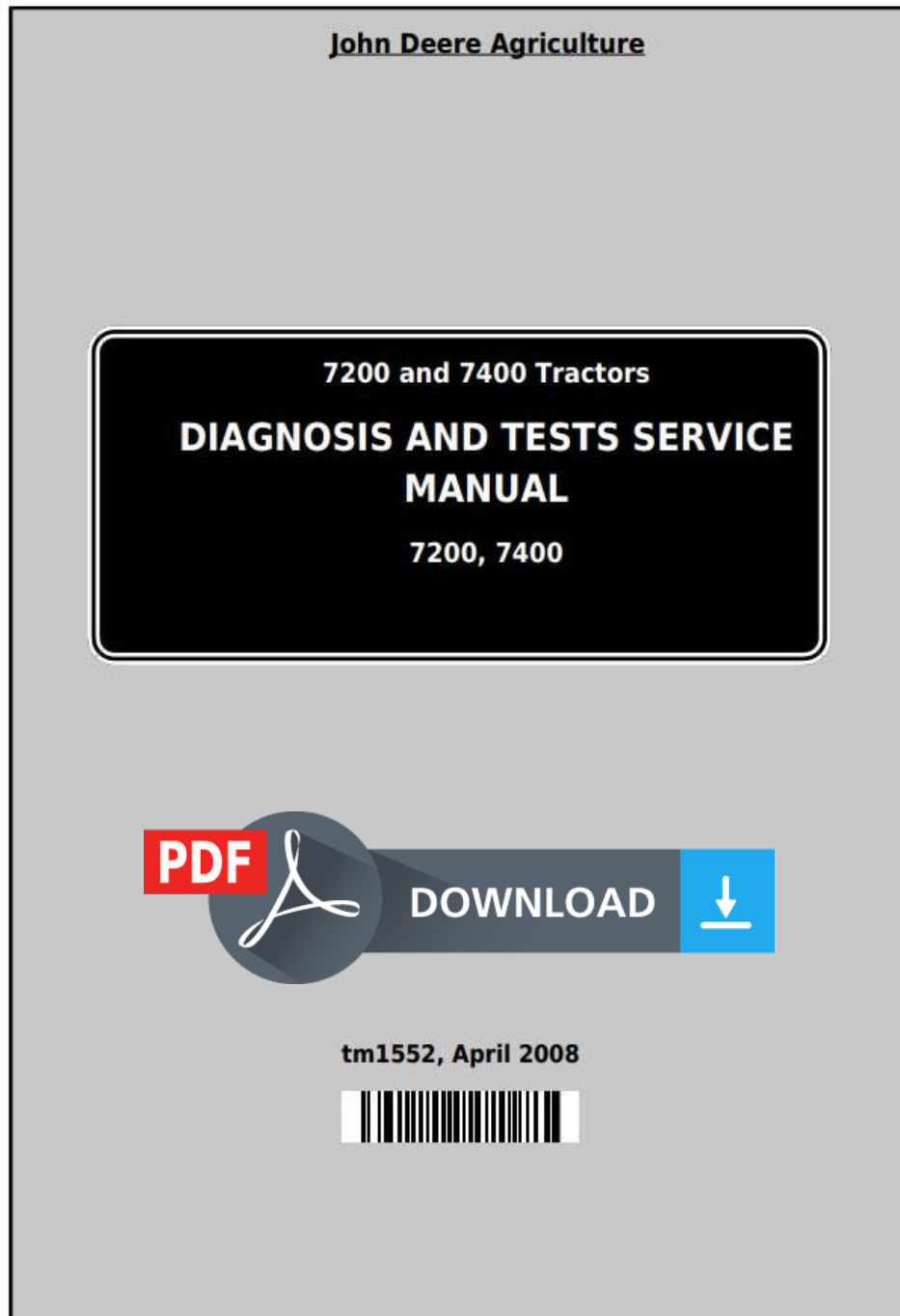


John Deere 1445F, 1745F, 1845F, 2345F Tractors Technical Service Manual (tm4481)



Covers: 1445F,1745F,1845F,2345F

Type: Service Manual

Language: English

Pages: 205

Format: PDF

Features: Bookmarked, searchable, printable

Compatibility: Windows/Mac/Tablet/Mobile

This service manual contains important information for the maintenance, troubleshooting and servicing of the **John Deere 1445F, 1745F, 1845F, 2345F Tractors Technical Service Manual (tm4481)**

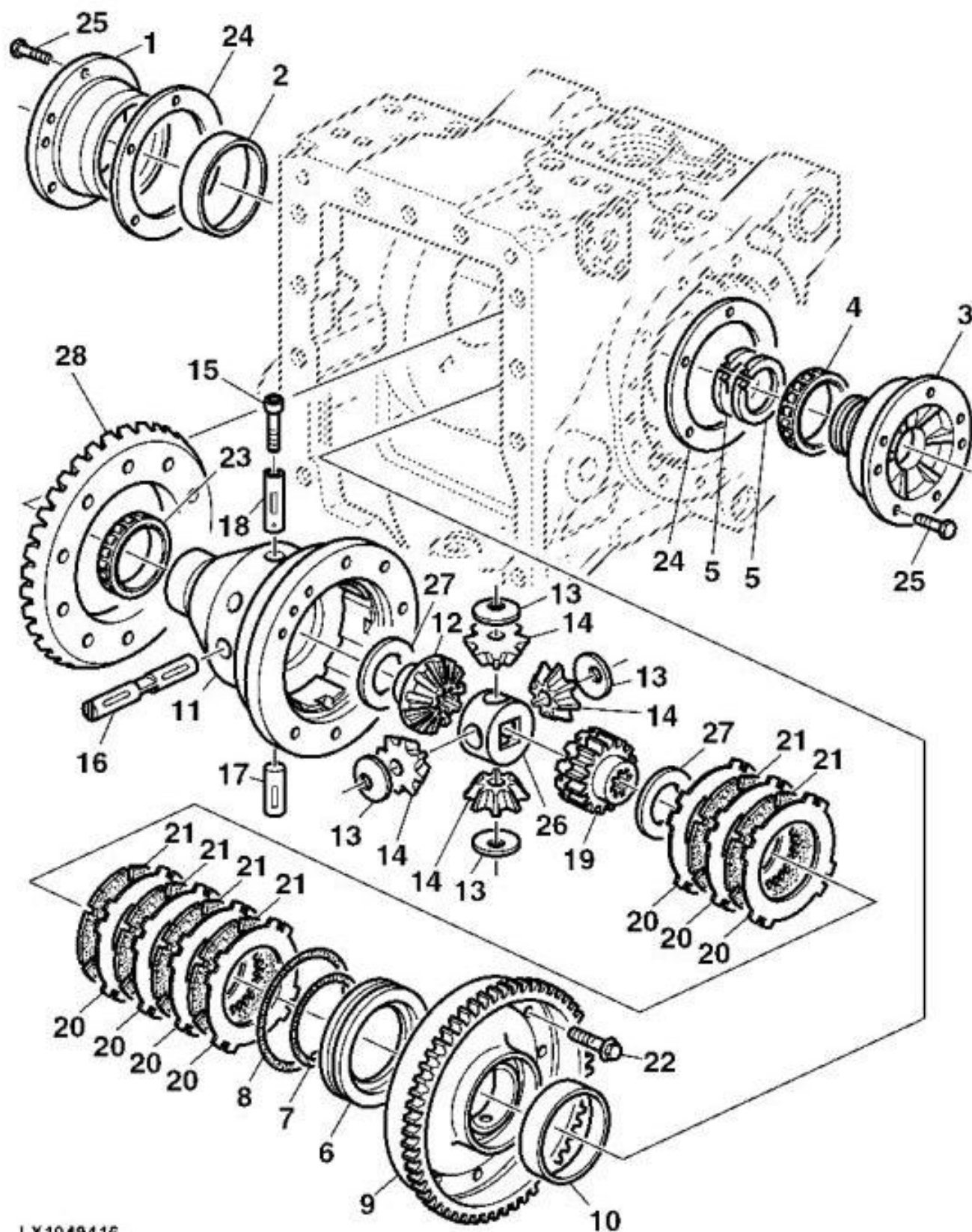
In this manual you will find detailed specifications, illustrations, schematics, diagrams and step-by-step procedures to properly service and diagnose the machine to the manufacturer's standards.

Contents:

- General Information
- Specifications
- Serial Number Location
- Engine Specifications
- Engine Diagnostics
- Engine Tests and Adjustments
- Engine Repair
- Power Train
- Transmission
- Axles
- Differential
- PTO
- Hydraulic System
- Electrical System
- Electrical Tests and Diagnostics
- Wiring Diagram / Schematic
- Ignition and Charging
- Steering
- Brakes
- Wheels
- Operator's Platform
- Body Panels
- Disassembly and Assembly
- Diagnostics, Tests and Adjustments
- Troubleshooting
- and much more...

Please note this manual is in **downloadable PDF format only**. If you have any questions about this product or would like to request sample pages, please contact us and reference the product name or SKU.

Differential - Exploded view

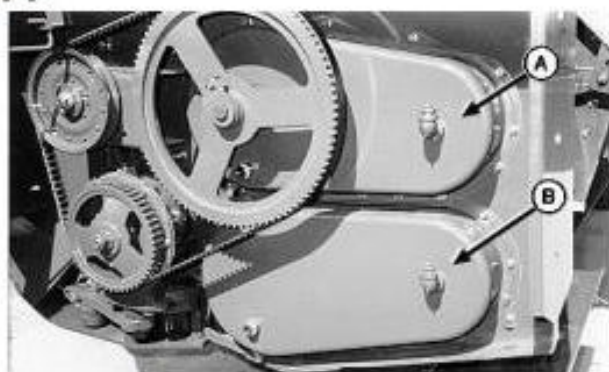


LX1049416

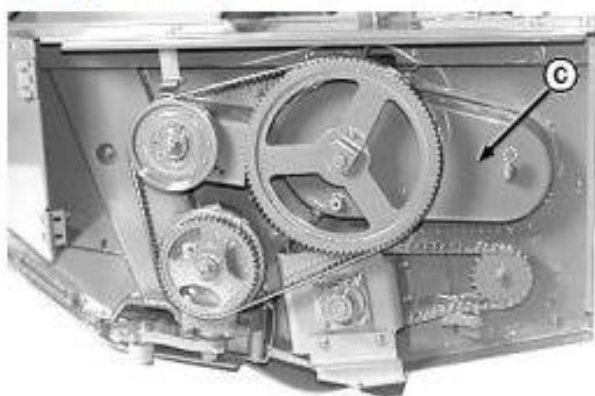
Differential - Exploded view

Replace Left-Hand Upper or Lower Auger Drive Chain and Sprockets

- [1] -



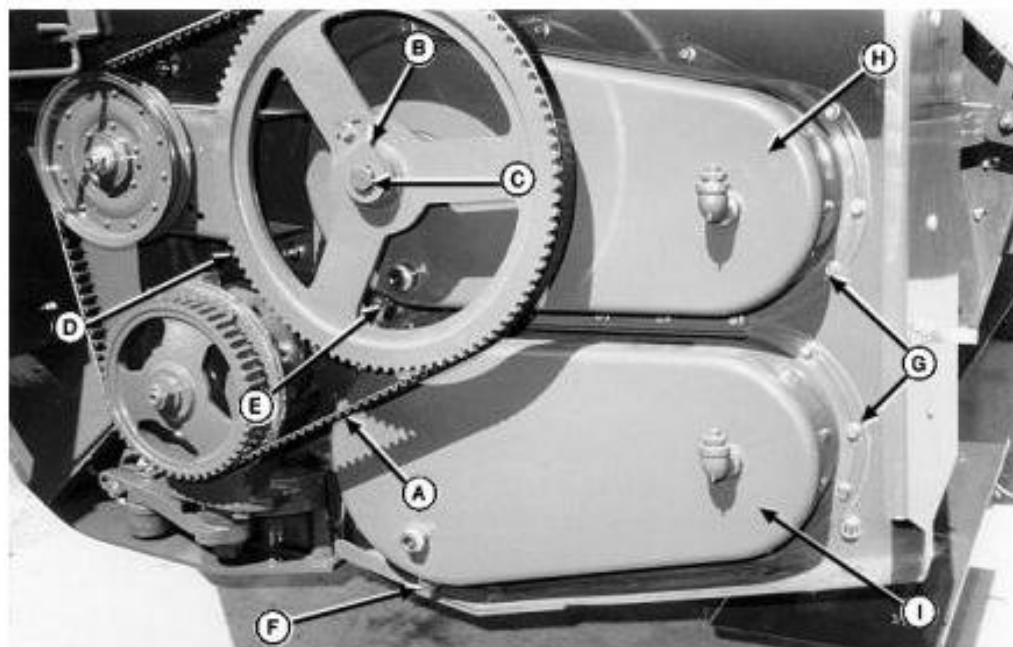
890 Auger Platform



890 Specialty Crop Auger Platform

890 AUGER PLATFORM -The upper (A) and lower (B) auger drive chains and sprockets can be replaced without opening the other drive. Perform only the steps in this procedure necessary to replace either upper or lower drive chains or sprockets.

- **890 SPECIALTY CROP AUGER PLATFORM** -When replacing upper auger drive chain or sprockets (C), perform only steps in this procedure necessary to replace upper drive chain or sprockets.



Left-Hand Side

LEGEND:

A Knife Drive Belt



Thank you very much
for your reading.
Please click here
to get more information.