

John Deere 160LC Excavator Diagnostic, Operation and Test Service Manual (tm1661)

160LC Excavator Operation and Tests

OPERATION AND TEST MANUAL

160LC

TM1661 21FEB05 (ENGLISH)

For complete service information also see:

160LC Excavator Repair	TM1662
Alternators and Starting Motors	CTM77
PowerTech 4.5L & 6.8L Diesel Engines Tier 1/Stage I, Tier 2/Stage II, Tier 3/Stage IIIA, Tier 3/Stage IIA Tier 3/Stage III, (Base Engine)	CTM104
JDG10274 Ultrasonic Undercarriage Measurement Gauge	CTM10001

PDF



DOWNLOAD



John Deere Construction and Forestry

Covers: 160LC

Type: Service Manual

Language: English

Pages: 619

Format: PDF

Features: Bookmarked, searchable, printable

Compatibility: Windows/Mac/Tablet/Mobile

This service manual contains important information for the maintenance, troubleshooting and servicing of the **John Deere 160LC Excavator Diagnostic, Operation and Test Service Manual (tm1661)**

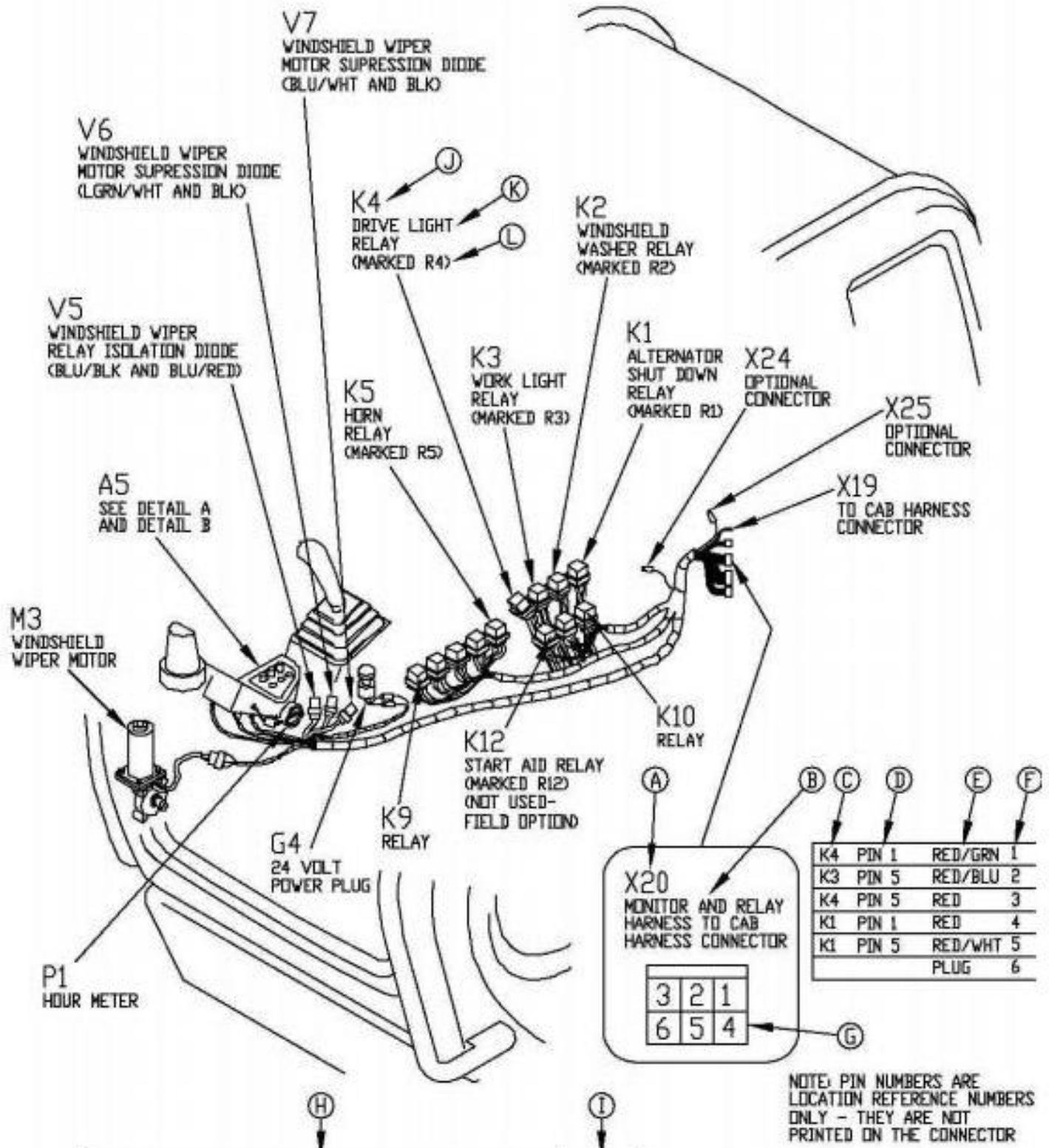
In this manual you will find detailed specifications, illustrations, schematics, diagrams and step-by-step procedures to properly service and diagnose the machine to the manufacturer's standards.

Contents:

- General Information
- Specifications
- Serial Number Location
- Engine Specifications
- Engine Diagnostics
- Engine Tests and Adjustments
- Engine Repair
- Power Train
- Transmission
- Axles
- Differential
- PTO
- Hydraulic System
- Electrical System
- Electrical Tests and Diagnostics
- Wiring Diagram / Schematic
- Ignition and Charging
- Steering
- Brakes
- Wheels
- Operator's Platform
- Body Panels
- Disassembly and Assembly
- Diagnostics, Tests and Adjustments
- Troubleshooting
- and much more...

Please note this manual is in **downloadable PDF format only**. If you have any questions about this product or would like to request sample pages, please contact us and reference the product name or SKU.

Reading A Harness Component Location Diagram



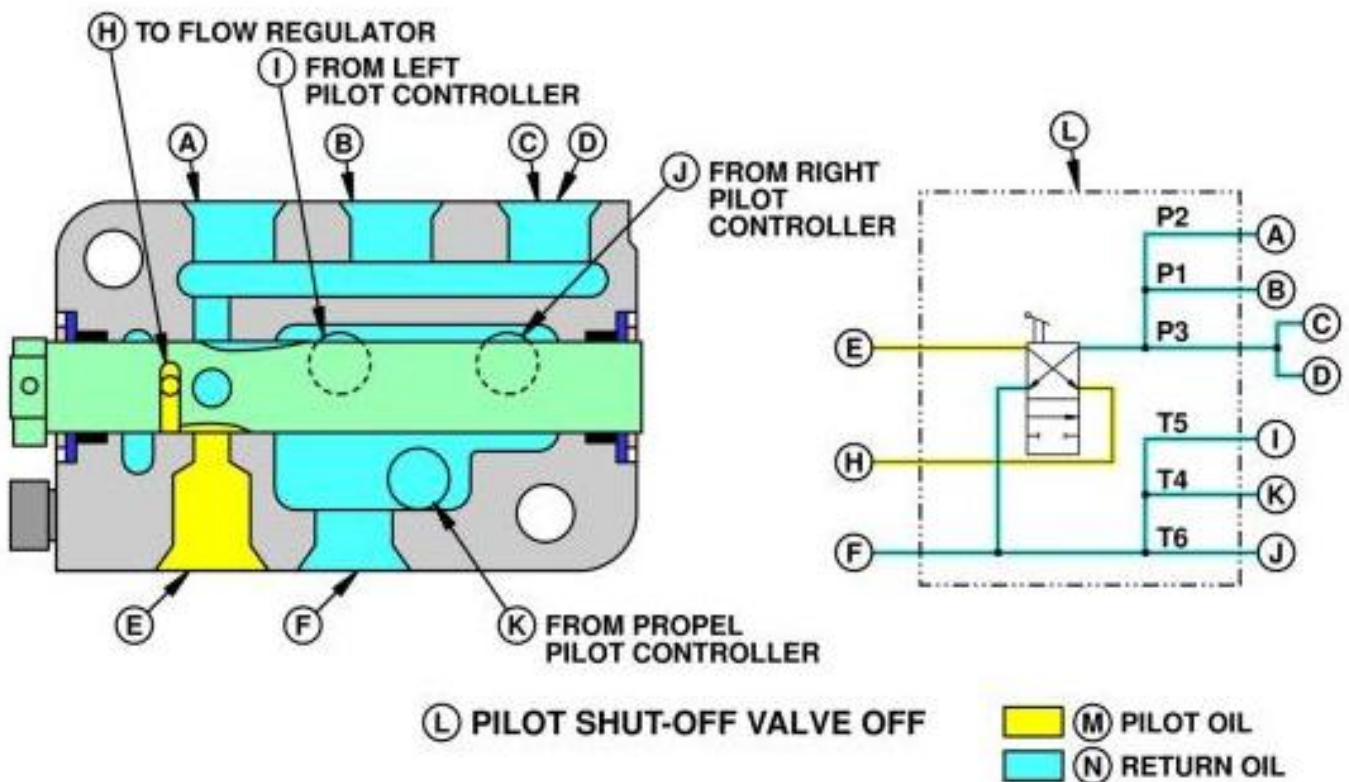
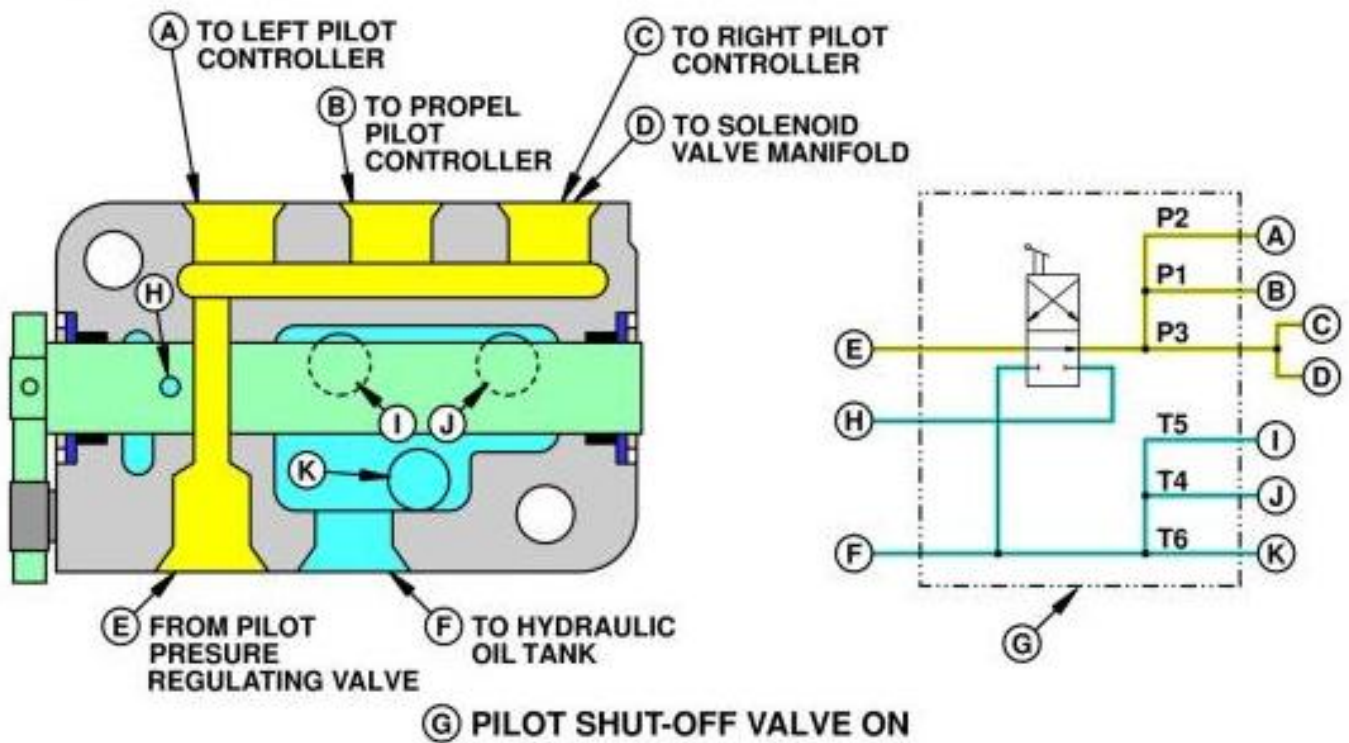
T118587 MONITOR AND RELAY HARNESS (W3) COMPONENT LOCATION

Reading a Harness Component Location Diagram

LEGEND:

- A Mating Harness Connector Identification Number
- B Mating Harness Connector Identification Name
- C Routing Destination of Wire (Shown as Component Identification Number)

Pilot Shut-Off Valve Operation



T101854

Pilot Shut-Off Valve On/Off

The pilot shut-off valve is a manual-operated, two-position, three-way rotary valve. The shut-off valve is rotated by pushing or pulling the pilot shut-off lever. The valve is located under the cab.



Thank you very much
for your reading.
Please click here
to get more information.