

John Deere 200D and 200DLC Excavator Service Repair Technical Manual (TM10079)

4890 Self-Propelled
Windrower Repair



REPAIR TECHNICAL MANUAL
Self-Propelled Windrowers models 4890

TM1617 19 NOV 01 (ENGLISH)

For complete service information also see:

4890 Self-Propelled Windrower Diagnostic	TM1781
890 Auger & Specialty Crop Platforms - Repair	TM1632
Alternators and Starting Motors	CTM77
PowerTech 4.5L & 6.8L Diesel Engines Tier 1/Stage I, Tier 2/Stage II, Tier 3/Stage IIIA, Tier 3/Stage IIA, Tier 3/Stage IIB	CTM104



John Deere Agriculture
Printed by Belgreen



Covers: 200DLC

Type: Service Manual

Language: English

Pages: 452

Format: PDF

Features: Bookmarked, searchable, printable

Compatibility: Windows/Mac/Tablet/Mobile

This service manual contains important information for the maintenance, troubleshooting and servicing of the **John Deere 200D and 200DLC Excavator Service Repair Technical Manual (TM10079)**

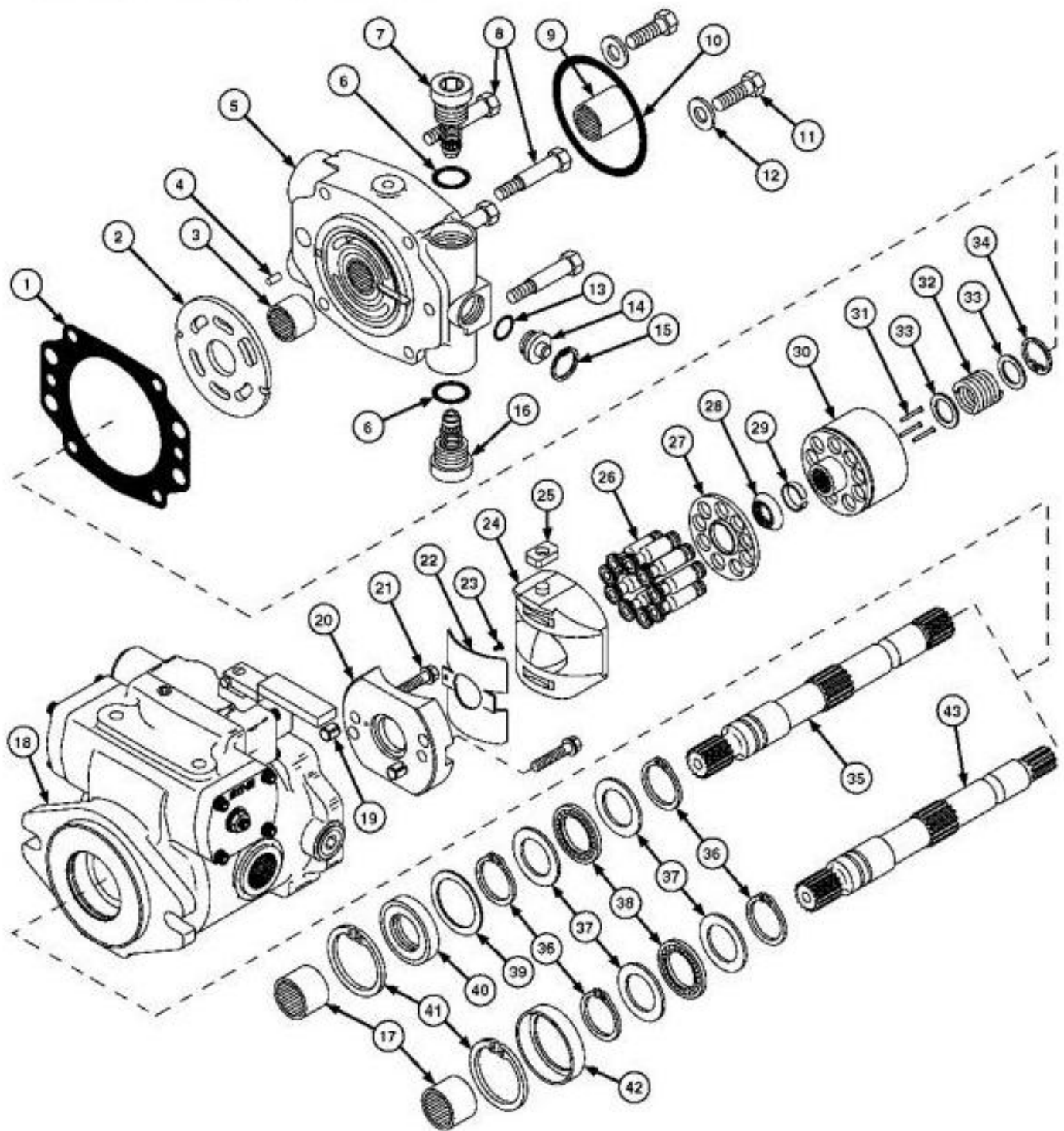
In this manual you will find detailed specifications, illustrations, schematics, diagrams and step-by-step procedures to properly service and diagnose the machine to the manufacturer's standards.

Contents:

- General Information
- Specifications
- Serial Number Location
- Engine Specifications
- Engine Diagnostics
- Engine Tests and Adjustments
- Engine Repair
- Power Train
- Transmission
- Axles
- Differential
- PTO
- Hydraulic System
- Electrical System
- Electrical Tests and Diagnostics
- Wiring Diagram / Schematic
- Ignition and Charging
- Steering
- Brakes
- Wheels
- Operator's Platform
- Body Panels
- Disassembly and Assembly
- Diagnostics, Tests and Adjustments
- Troubleshooting
- and much more...

Please note this manual is in **downloadable PDF format only**. If you have any questions about this product or would like to request sample pages, please contact us and reference the product name or SKU.

Inspect Ground Drive Pump



Ground Drive Pump-Exploded View

LEGEND:

1	Gasket
2	Valve Plate
3	Needle Bearing
4	Spring Pin
5	Backplate
6	O-Ring (2 used)
7	Relief Valve (Port C)
8	Cap Screws (4 used)
9	Coupler
10	O-Ring
11	Cap Screw (2 used)

To remove rocker switches (A):

- a. Pry off switch cap (B) being careful not to damage cap or console cover.
- b. Grasp switch (A) with a pliers. Firmly pull switch straight up and out of receptacle (C).

[2] - To install new switch:

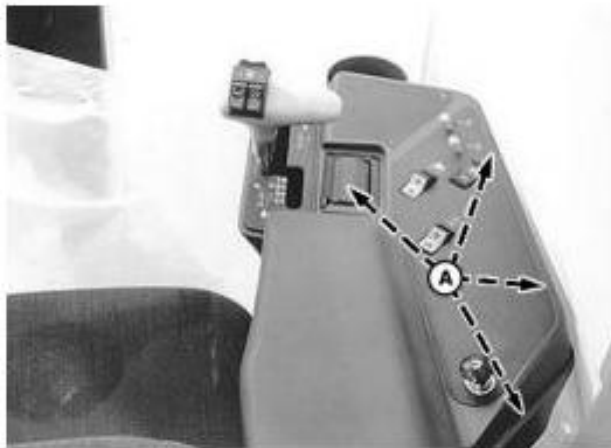
- a. Align grooves in switch body with ribs in receptacle wall.
- b. Firmly push switch straight down into receptacle.

Replace Armrest Console Toggle Switches

[1] -

→NOTE:

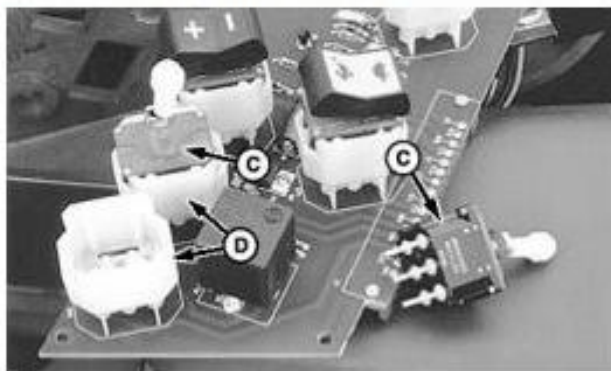
Four screws (A) fasten the armrest console panel to its base: three are located on the right-hand side of the console, the other is under the ashtray.



Console Screws



Circuit Board Mounting Screws



Toggle Switches and Receptacle

LEGEND:

A	Screws
B	Screws
C	Toggle Switches
D	Receptacles



Thank you very much
for your reading.
Please click here
to get more information.