

# John Deere 2109, 2111, 2113, 2115, 2117, 2122, 2126, 2130, 2134 Meter Planters Repair Manual TM804119

## 290GLC Excavator Diagnostic

### OPERATION AND TEST MANUAL

290GLC

TM12172 10SEP15 (ENGLISH)

For complete service information also see:

290GLC Excavator (PIN: 1FF290GX_ E705001-; 1FF290GX_ D705001- ;1FF290GX_ C705001-)	TM12178
JLink (MTG) Technical Manual	TM114519
PowerTech Plus 4.5L and 6.8L Diesel Engines Level 14 Electronic Fuel System With Denso HPCR	CTM320
Super Caddy Oil Cleanup Pro	CTM310
6068 PowerTech	

PDF



DOWNLOAD



Covers: 100000);,2109,2111,2113,2115,2117,2122,2126,2130,2134

**Type:** Service Manual

**Language:** English

**Pages:** 309

**Format:** PDF

**Features:** Bookmarked, searchable, printable

**Compatibility:** Windows/Mac/Tablet/Mobile

This service manual contains important information for the maintenance, troubleshooting and servicing of the **John Deere 2109, 2111, 2113, 2115, 2117, 2122, 2126, 2130,2134 Meter Planters Repair Manual TM804119**

In this manual you will find detailed specifications, illustrations, schematics, diagrams and step-by-step procedures to properly service and diagnose the machine to the manufacturer's standards.

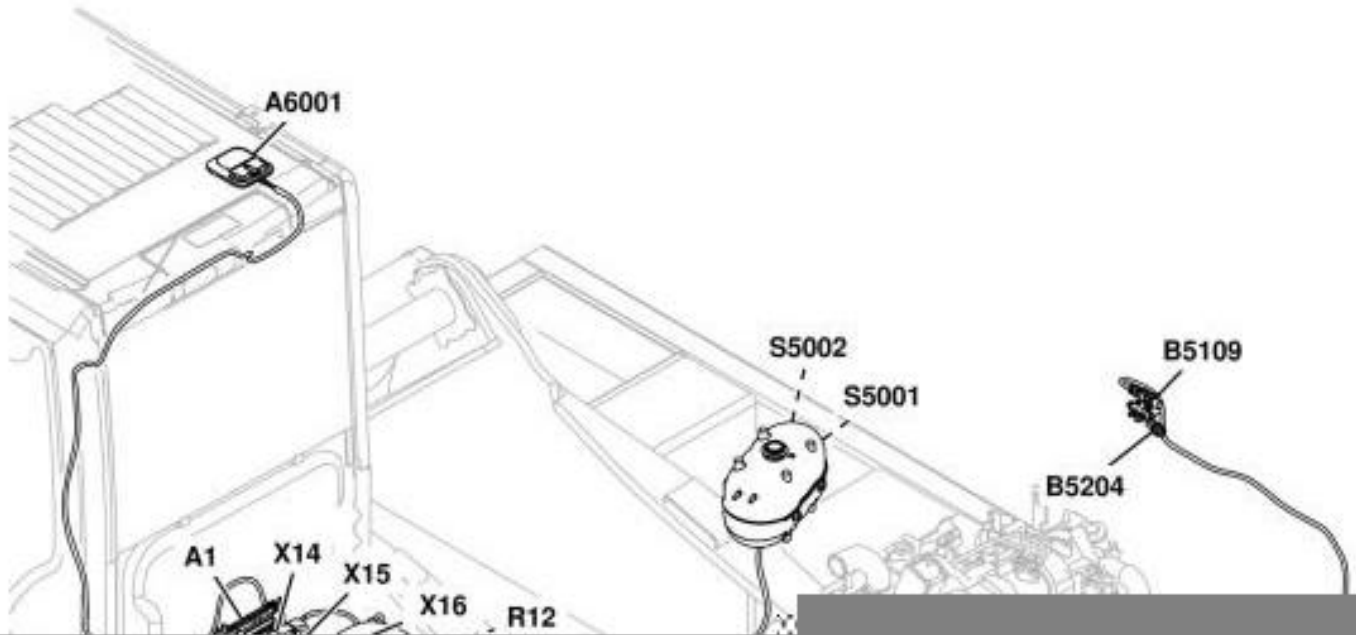
**Contents:**

- General Information
- Specifications
- Serial Number Location
- Engine Specifications
- Engine Diagnostics
- Engine Tests and Adjustments
- Engine Repair
- Power Train
- Transmission
- Axles
- Differential
- PTO
- Hydraulic System
- Electrical System
- Electrical Tests and Diagnostics
- Wiring Diagram / Schematic
- Ignition and Charging
- Steering
- Brakes
- Wheels
- Operator's Platform
- Body Panels
- Disassembly and Assembly
- Diagnostics, Tests and Adjustments
- Troubleshooting
- and much more...

Please note this manual is in **downloadable PDF format only**. If you have any questions about this product or would like to request sample pages, please contact us and reference the product name or SKU.

# Engine Interface Harness (W5) Component Location

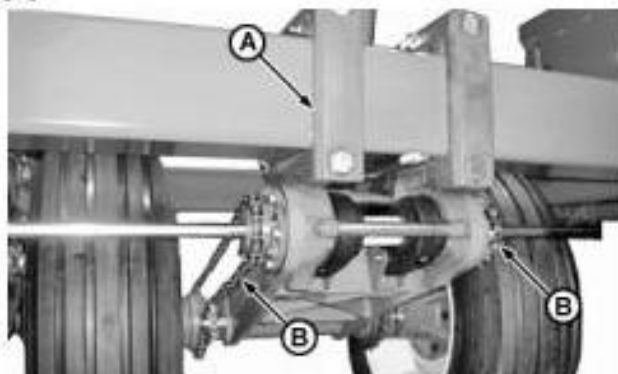
Engine Model 6068HT073



## Group 10 - Transmissions

### Removing and Installing Clutch

[1] -



**LEGEND:**

A Wheel Supports  
B Chains

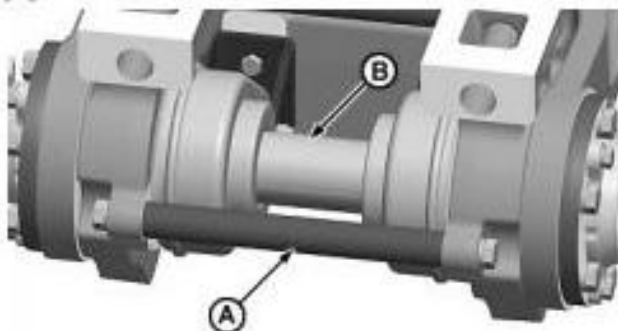
**Wheel Supports and Chains**

Remove wheel support (A) and chains (B).

**-NOTE:**

See to Removing and Installing Wheel Support for more details.

[2] -



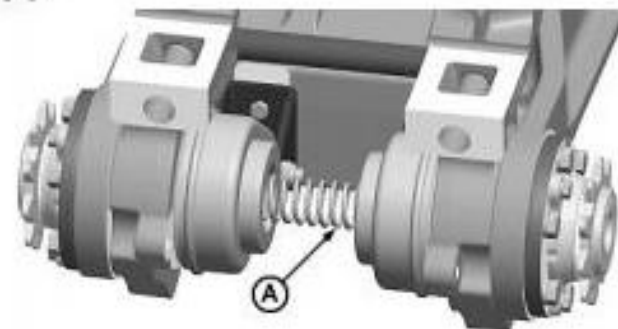
**LEGEND:**

A Rod  
B Protective Cover

**Rod and Protective Cover**

Remove rod (A) and protective cover (B).

[3] -



**LEGEND:**

A Spring

**Spring**

Remove spring (A).

[4] -



Thank you very much  
for your reading.  
Please click here  
to get more information.