

John Deere 2154D Road Builder Service Repair Technical Manual (TM10414)

2154D Road Builder Repair



JOHN HARE



COLLECTION

REPAIR TECHNICAL MANUAL

Delimber models 2154D

TM10414 26 FEB 16 (ENGLISH)

For complete service information also see:

JDLINK (MTG) Technical Manual

TM114519

2154D Road Builder Diagnostic

TM10322

PowerTech E 4.5 and 6.8L Diesel Engines Level 16 Electronic Fuel System With Denso HPCR

CTM502

Super Caddy Oil C

CTM310

PowerTech 4.5L &
III, Tier 3/Stage II



John Deere Construction and Forestry
Printed by Belgreen



TM10414

Covers: 2154D

Type: Service Manual

Language: English

Pages: 427

Format: PDF

Features: Bookmarked, searchable, printable

Compatibility: Windows/Mac/Tablet/Mobile

This service manual contains important information for the maintenance, troubleshooting and servicing of the **John Deere 2154D Road Builder Service Repair Technical Manual (TM10414)**

In this manual you will find detailed specifications, illustrations, schematics, diagrams and step-by-step procedures to properly service and diagnose the machine to the manufacturer's standards.

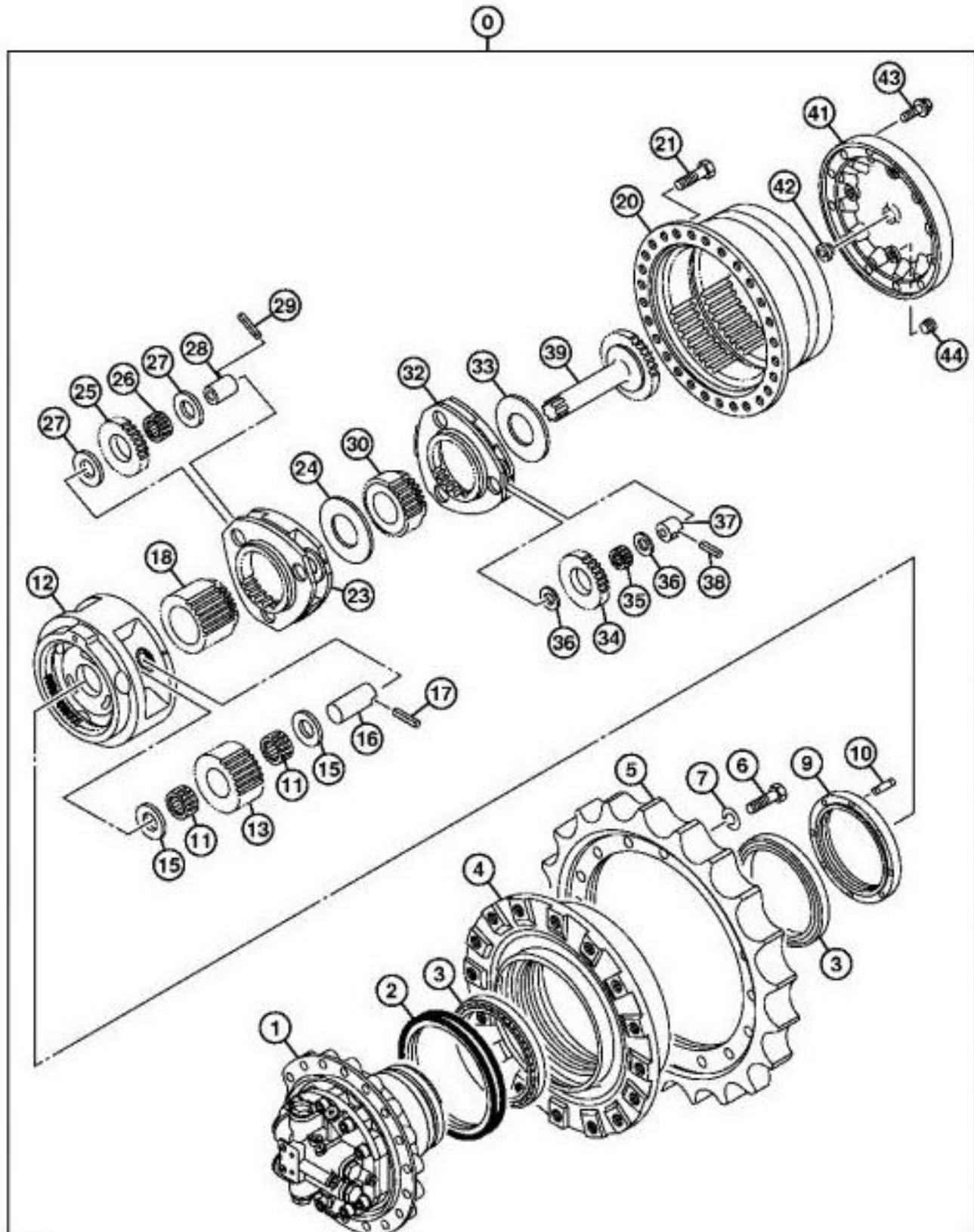
Contents:

- General Information
- Specifications
- Serial Number Location
- Engine Specifications
- Engine Diagnostics
- Engine Tests and Adjustments
- Engine Repair
- Power Train
- Transmission
- Axles
- Differential
- PTO
- Hydraulic System
- Electrical System
- Electrical Tests and Diagnostics
- Wiring Diagram / Schematic
- Ignition and Charging
- Steering
- Brakes
- Wheels
- Operator's Platform
- Body Panels
- Disassembly and Assembly
- Diagnostics, Tests and Adjustments
- Troubleshooting
- and much more...

Please note this manual is in **downloadable PDF format only**. If you have any questions about this product or would like to request sample pages, please contact us and reference the product name or SKU.

Travel Gearbox Disassemble and Assemble

[1] -



TX1000629

Travel Gearbox

LEGEND:

- 0 Travel Motor and Gearbox Assembly
- 1 Travel Motor
- 2 Seal (2 used)

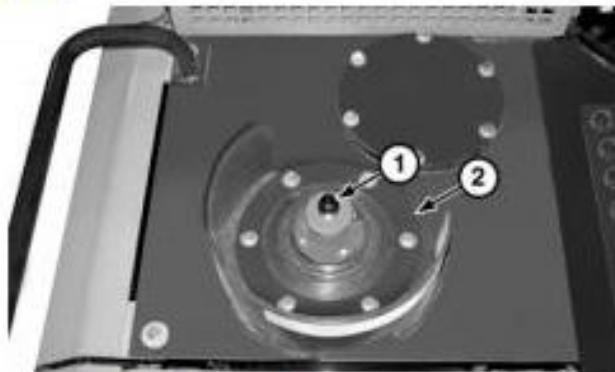
Fan Drive Control Valve Remove and Install

[1] - Turn battery disconnect switch to OFF.

[2] -



CAUTION:



Hydraulic Tank Pressure Release Button

LEGEND:

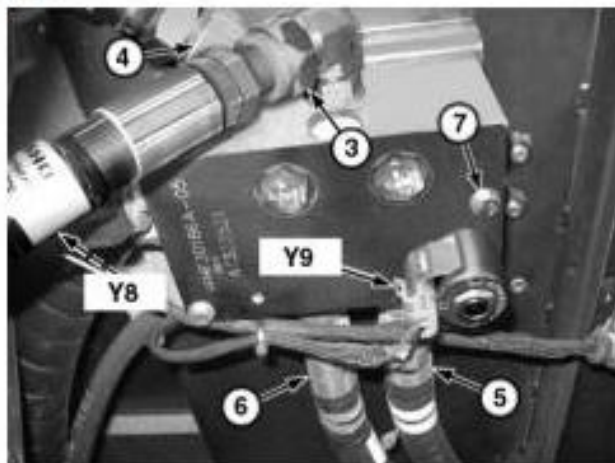
- 1 Pressure Release Button
- 2 Hydraulic Oil Tank Cover

High pressure release of oil from pressurized system can cause serious burns or penetrating injury. The hydraulic tank is pressurized. Relieve pressure by pushing pressure release button (1).

Push pressure release button (1).

[3] - Apply vacuum to hydraulic tank. [See Apply Vacuum to Hydraulic Oil Tank.](#) (Group 3360.)

[4] -



LEGEND:

- 3 Supply Oil Line—Fan Drive Pump-to-Fan Speed and Reversing Control Valve (port PUMP)
- 4 Return Line—Fan Speed Control Valve (port B)-to-Hydraulic Oil Cooler
- 5 Fan Speed and Reversing Control Valve (port A)-to-Fan Drive Motor Hydraulic Line
- 6 Fan Speed and Reversing Control Valve (port B)-to-Fan Drive Motor Hydraulic Line
- 7 Cap Screw (2 used)
- Y8 Proportional Fan Speed Solenoid Valve Connector
- Y9 Reversing Fan Solenoid Valve Connector

Fan Speed and Reversing Control Valve

Disconnect wiring harness connectors (Y8 and Y9) from solenoid.

[5] - Install identification tags and disconnect hydraulic lines (3-6). Close all openings using caps and plugs. [See Fan Drive System Component Location.](#) (Group 9025-15.)

[6] - Remove cap screws (7).

[7] - Inspect and replace as needed.

[8] - Install cap screws.

[9] - Connect hydraulic lines and harness connectors. [See Fan Drive System Component Location.](#) (Group 9025-15.)



Thank you very much
for your reading.
Please click here
to get more information.