

# John Deere 250GLC (T2/S2) Excavator Service Repair Technical Manual (TM13079X19)

## 250GLC Excavator Repair

### REPAIR TECHNICAL MANUAL

T2/S2 models 250GLC (PIN: 1F9250GX\_\_D608001-; 1F9250GX\_\_C608001-)

TM13079X19 06JAN16 (ENGLISH)

For complete service information also see:

250GLC Excavator Diagnostic TM13078X19

JDLink (MTG) Technical Manual TM114519

PowerTech E 4.5 and 6.8L Diesel  
Engines Level 16 Electronic Fuel  
System With Denso HPCR CTM502

PowerTech 4.5L & 6.8L Diesel Engines  
Tier 1/Stage I, Tier 2/Stage II, Tier  
3/Stage IIIA, Tier 3/Stage IIA T CTM104  
3/Stage III, (Base

PDF



DOWNLOAD



John Deere Construction and Forestry

**Covers:** 250GLC,1F9250GX\_\_D608001-;;1F9250GX\_\_C608001-)

**Type:** Service Manual

**Language:** English

**Pages:** 502

**Format:** PDF

**Features:** Bookmarked, searchable, printable

**Compatibility:** Windows/Mac/Tablet/Mobile

This service manual contains important information for the maintenance, troubleshooting and servicing of the **John Deere 250GLC (T2/S2) Excavator Service Repair Technical Manual (TM13079X19)**

In this manual you will find detailed specifications, illustrations, schematics, diagrams and step-by-step procedures to properly service and diagnose the machine to the manufacturer's standards.

**Contents:**

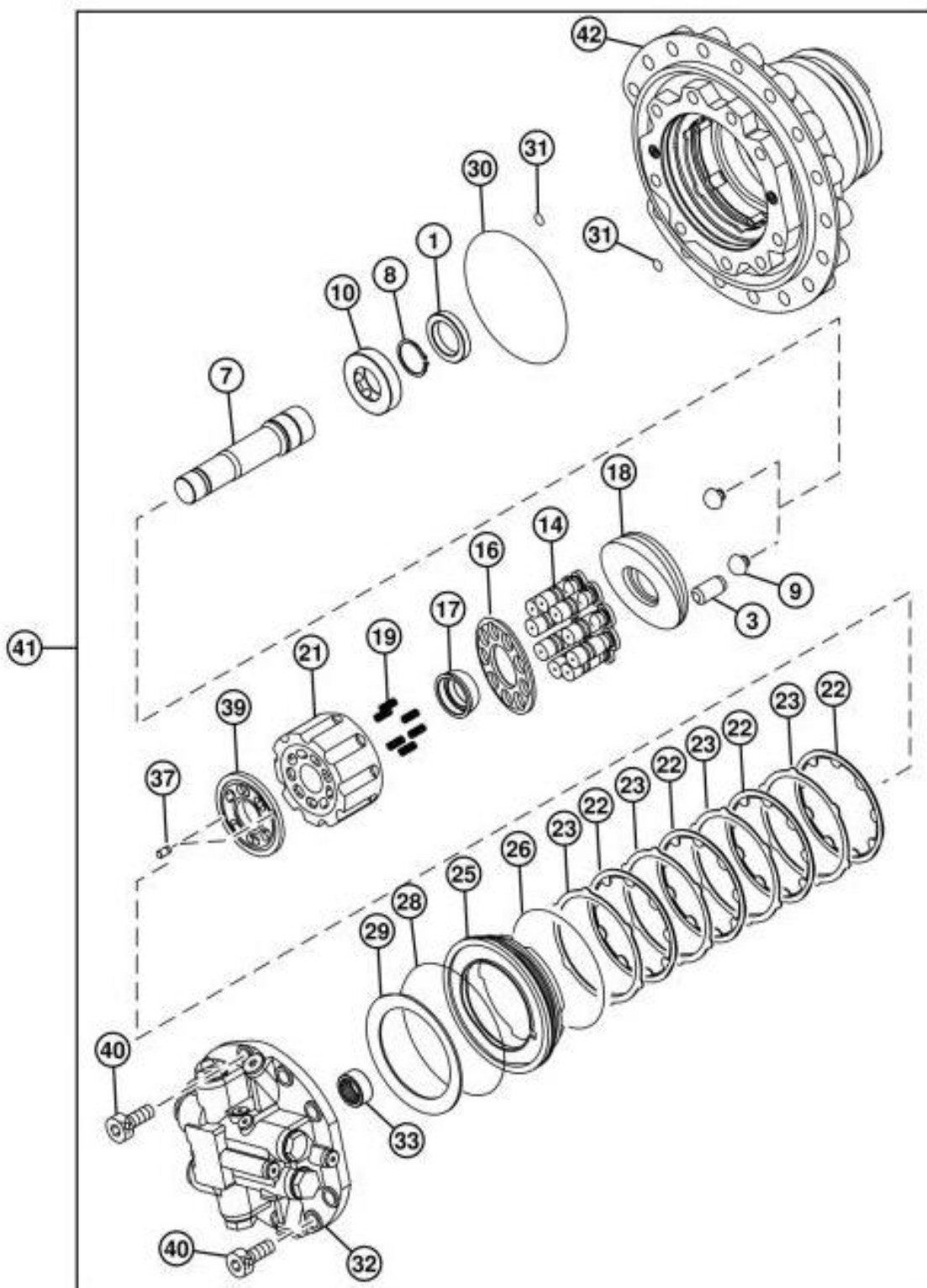
- General Information
- Specifications
- Serial Number Location
- Engine Specifications
- Engine Diagnostics
- Engine Tests and Adjustments
- Engine Repair
- Power Train
- Transmission
- Axles
- Differential
- PTO
- Hydraulic System
- Electrical System
- Electrical Tests and Diagnostics
- Wiring Diagram / Schematic
- Ignition and Charging
- Steering
- Brakes
- Wheels
- Operator's Platform
- Body Panels
- Disassembly and Assembly
- Diagnostics, Tests and Adjustments
- Troubleshooting
- and much more...

Please note this manual is in **downloadable PDF format only**. If you have any questions about this product or would like to request sample pages, please contact us and reference the product name or SKU.

# Travel Motor and Park Brake Disassemble and Assemble

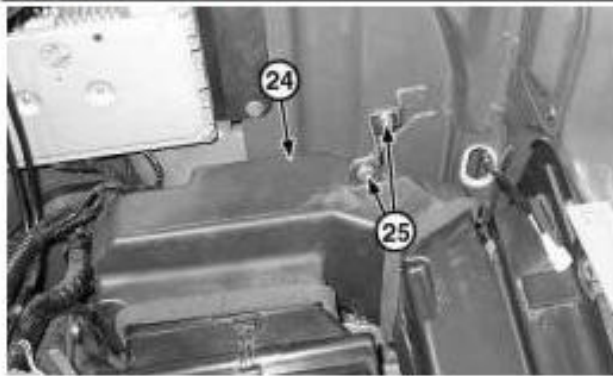
## Disassemble Travel Motor and Park Brake

[1] -



TX1093328

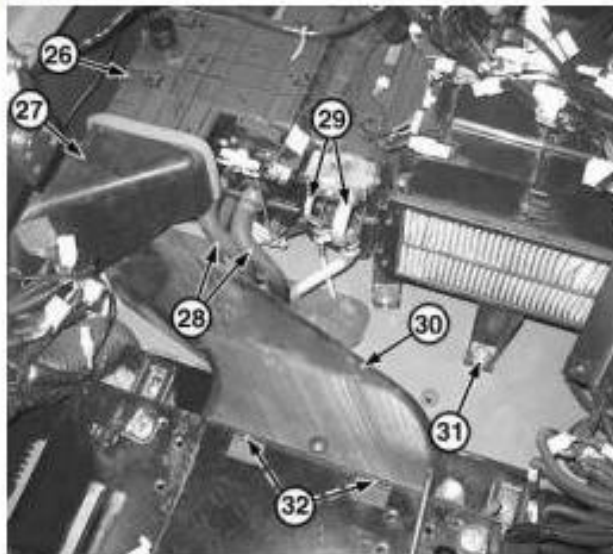
Travel Motor

**LEGEND:**

- 24 Fresh Air Inlet Duct
- 25 Cap Screw (2 used)

**Fresh Air Inlet Duct**

Remove cap screws (25) and fresh air inlet duct (24).

**[16] -****LEGEND:**

- 26 Heater and Evaporator Case
- 27 Air Duct
- 28 Engine Coolant Hose (2 used)
- 29 Air Conditioner Refrigerant Line (2 used)
- 30 Air Duct
- 31 Cap Screw (6 used)
- 32 Cap Screw (2 used)

**Air Conditioner Component Location**

Disconnect engine coolant hoses (28) from heater and evaporator case (26). Close all openings using caps and plugs.

**[17] -** Install identification tags and remove air conditioner refrigerant lines (29) from heater and evaporator case. Close all openings using caps and plugs.

**[18] -** Remove cap screws (32) and air duct (30).

**[19] -** Remove cap screws (31). Separate air filter from air duct and remove.

**[20] -** Remove heater-air conditioner.

**[21] -** Repair or replace parts as necessary.

**[22] -** Install heater-air conditioner.

**[23] -** Connect air duct.



Thank you very much  
for your reading.  
Please click here  
to get more information.