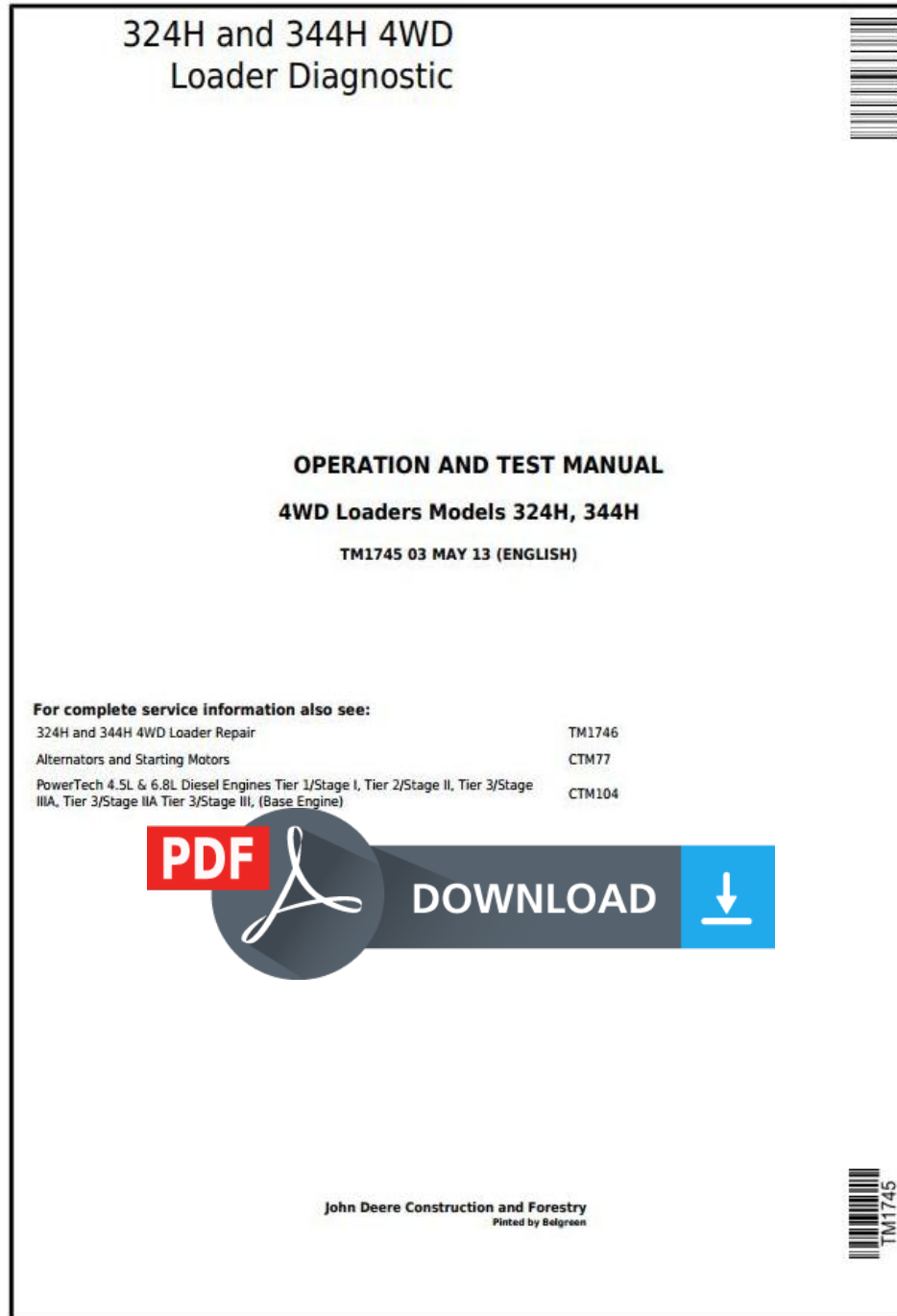


# John Deere 324H and 344H 4WD Loader Diagnostic, Operation and Test Service Manual (TM1745)



**Covers:** 324H,344H

**Type:** Service Manual

**Language:** English

**Pages:** 1040

**Format:** PDF

**Features:** Bookmarked, searchable, printable

**Compatibility:** Windows/Mac/Tablet/Mobile

This service manual contains important information for the maintenance, troubleshooting and servicing of the **John Deere 324H and 344H 4WD Loader Diagnostic, Operation and Test Service Manual (TM1745)**

In this manual you will find detailed specifications, illustrations, schematics, diagrams and step-by-step procedures to properly service and diagnose the machine to the manufacturer's standards.

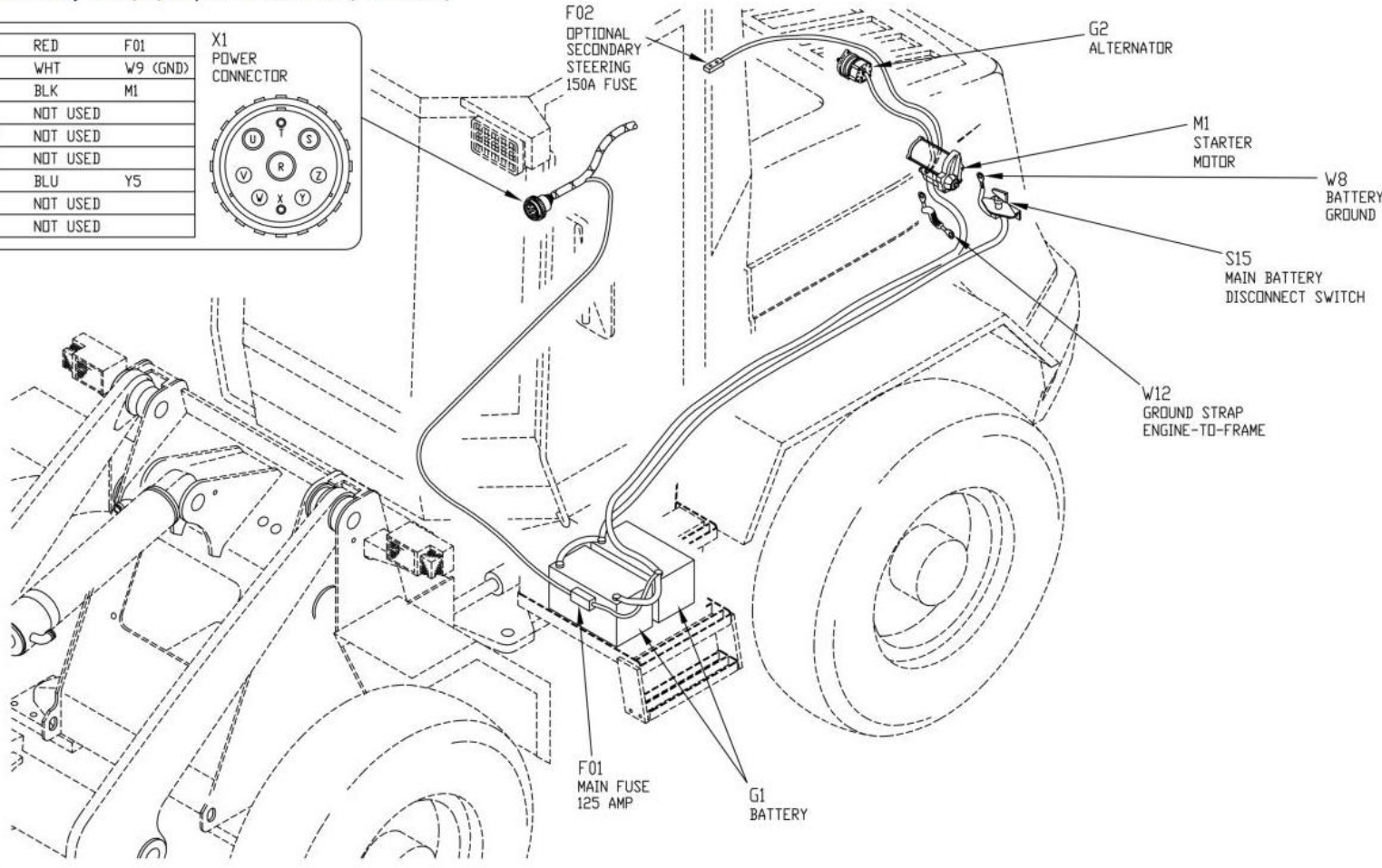
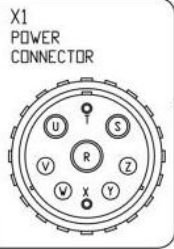
**Contents:**

- General Information
- Specifications
- Serial Number Location
- Engine Specifications
- Engine Diagnostics
- Engine Tests and Adjustments
- Engine Repair
- Power Train
- Transmission
- Axles
- Differential
- PTO
- Hydraulic System
- Electrical System
- Electrical Tests and Diagnostics
- Wiring Diagram / Schematic
- Ignition and Charging
- Steering
- Brakes
- Wheels
- Operator's Platform
- Body Panels
- Disassembly and Assembly
- Diagnostics, Tests and Adjustments
- Troubleshooting
- and much more...

Please note this manual is in **downloadable PDF format only**. If you have any questions about this product or would like to request sample pages, please contact us and reference the product name or SKU.

**Power And Battery Cables (W1) Component Location—344H (S.N. —710261)**

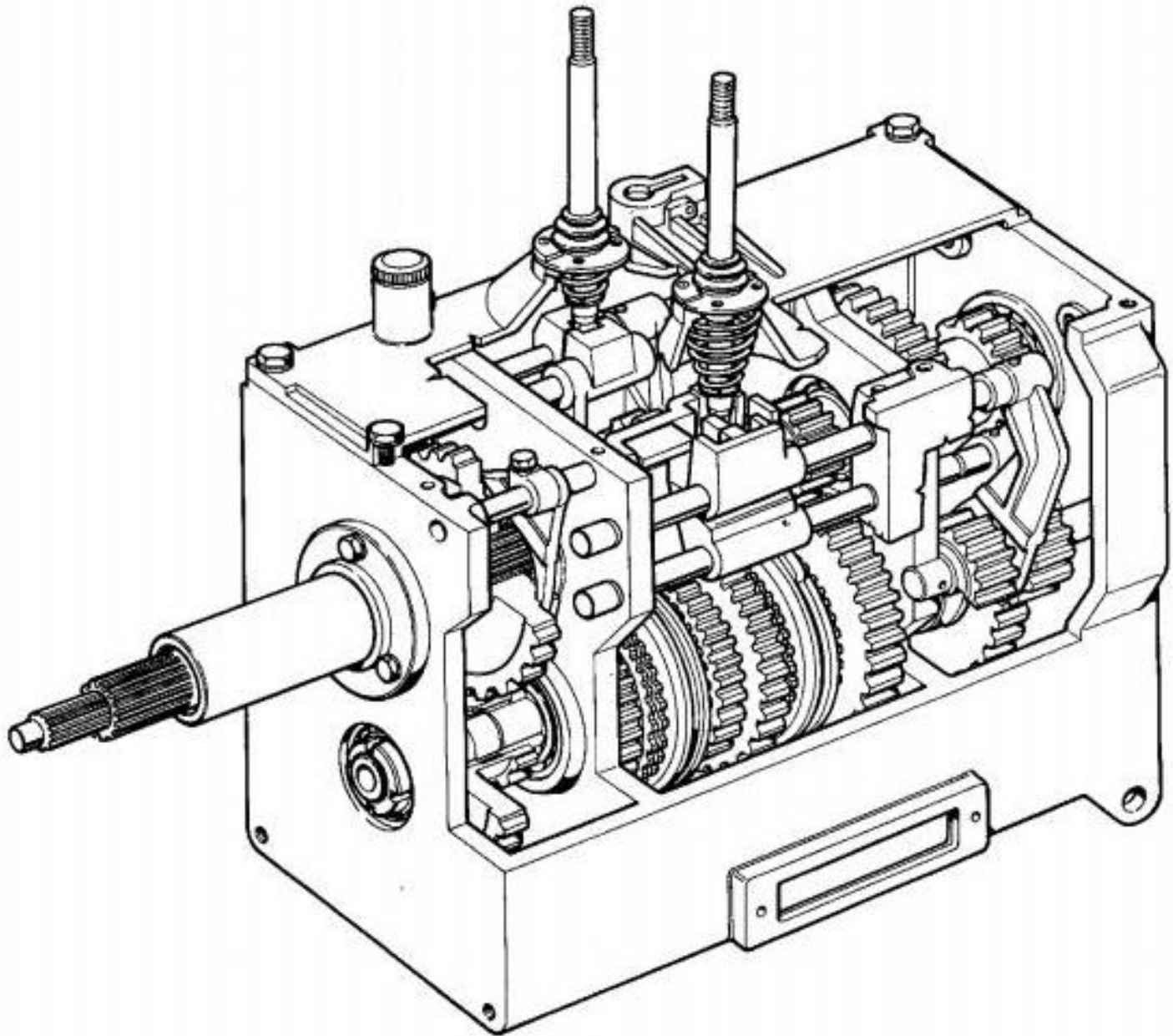
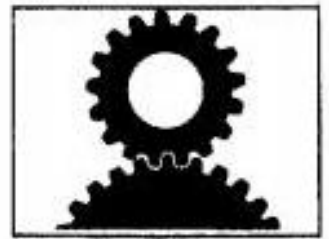
R	RED	F01
S	WHT	W9 (GND)
T	BLK	M1
U	NOT USED	
V	NOT USED	
W	NOT USED	
X	BLU	Y5
Y	NOT USED	
Z	NOT USED	



T127299

Power And Battery Cable Location

**CAMBIO DI VELOCITÀ**  
**BOITE DE VITESSES**  
**GEARBOX**  
**CAMBIO DE VELOCIDAD**  
**SCHALTGETRIEBE**





Thank you very much  
for your reading.  
Please click here  
to get more information.