

John Deere 326D, 328D, 332D Skid Steer Loader w.EH Controls Diagnostic&Test Service Manual (TM11438)

770D, 1070D, 1270D,
1470D Wheeled Harvesters
Diagnostic and Repair

TECHNICAL MANUAL
Wheeled models 770D, 1070D, 1270D, 1470D
TM2122 22 FEB 05 (ENGLISH)

For complete service information also see:

Technical Manual - TMC	TM2155
JDLINK (MTG) Technical Manual	TM114519
PowerTech 8.1 L Diesel Engines Base Engine	CTM86
Alternators and Starting Motors	CTM77
PowerTech 6090 Diesel Engines Fuel System with the Denso High Pressure Common Rail	CTM385
PowerTech 4.5L & 6.8L Diesel Engines Stanadyne DEL0 Pump	
PowerTech 4045, 6068 Diesel Engines Denso High Pressure Common Rail	
PowerTech 8.1L Diesel Engines Leveling Fuel System With Denso High Pressure Common Rail	CTM255
PowerTech 4.5L & 6.8L Diesel Engines Tier 1/Stage I, Tier 2/Stage II, Tier 3/Stage IIIA, Tier 3/Stage IIA Tier 3/Stage III, (Base Engine)	CTM104
JDLINK/ZXLINK Machine Monitoring System	CTM10006
Series 400 6466 Diesel Engines	CTM1

PDF  **DOWNLOAD** 

John Deere Construction and Forestry
Printed by Belgreen

TM2122

Covers: 326D,328D,332D

Type: Service Manual

Language: English

Pages: 768

Format: PDF

Features: Bookmarked, searchable, printable

Compatibility: Windows/Mac/Tablet/Mobile

This service manual contains important information for the maintenance, troubleshooting and servicing of the **John Deere 326D, 328D, 332D Skid Steer Loader w.EH Controls Diagnostic&Test Service Manual (TM11438)**

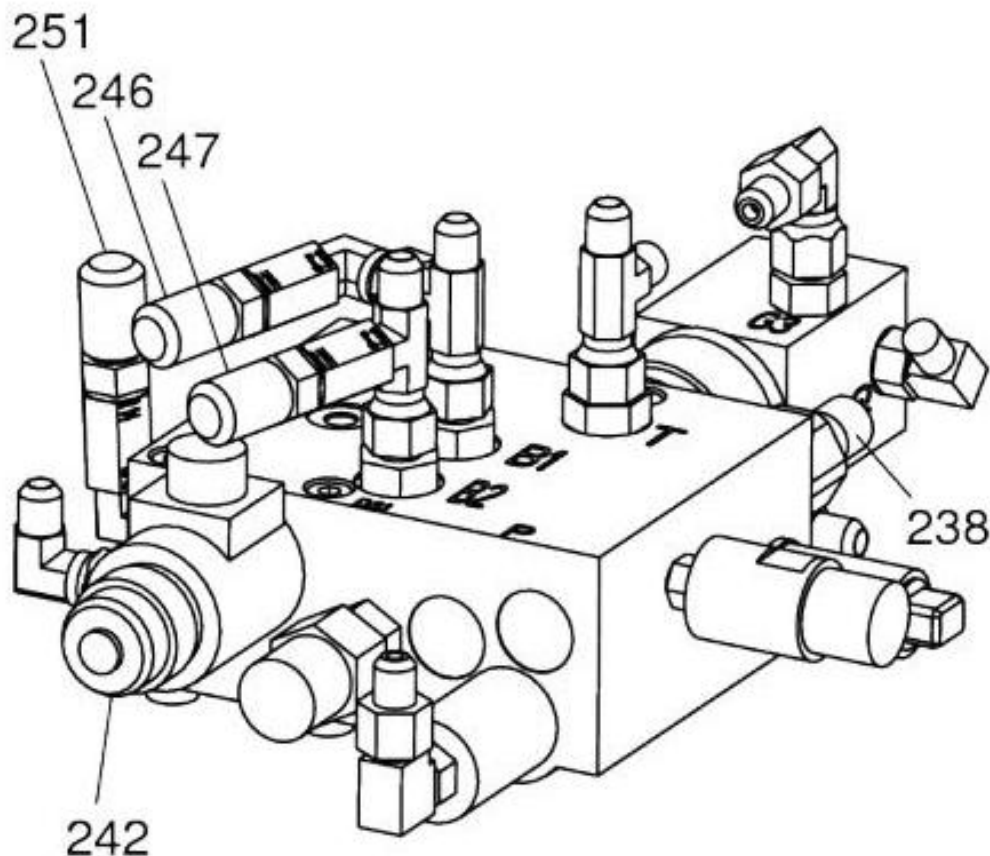
In this manual you will find detailed specifications, illustrations, schematics, diagrams and step-by-step procedures to properly service and diagnose the machine to the manufacturer's standards.

Contents:

- General Information
- Specifications
- Serial Number Location
- Engine Specifications
- Engine Diagnostics
- Engine Tests and Adjustments
- Engine Repair
- Power Train
- Transmission
- Axles
- Differential
- PTO
- Hydraulic System
- Electrical System
- Electrical Tests and Diagnostics
- Wiring Diagram / Schematic
- Ignition and Charging
- Steering
- Brakes
- Wheels
- Operator's Platform
- Body Panels
- Disassembly and Assembly
- Diagnostics, Tests and Adjustments
- Troubleshooting
- and much more...

Please note this manual is in **downloadable PDF format only**. If you have any questions about this product or would like to request sample pages, please contact us and reference the product name or SKU.

Checking the Load and Release Range

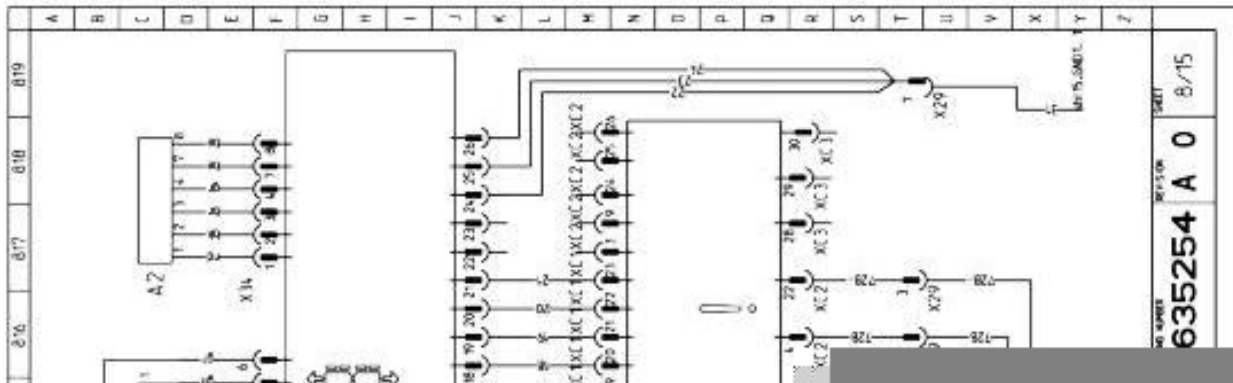


Brake valve

- Attach a 25 MPa gauge to measuring point (251).
- Start the diesel engine. Switch off the parking brake and depress the brake pedal repeatedly. Read the pressures on the gauge at the points at which pressure loading / release starts.
- Pressure loading starts at approximately 14 MPa, and ends at approximately 16 MPa.

Diagnose Brake Hydraulics

Symptom	Problem	Solution
<i>Parking brake does not engage when parking brake switch is ON</i>	Parking brake solenoid Y41 malfunction. Pressure not bled off correctly.	Inspect solenoid Y41. Replace if necessary. Parking brake solenoid Y41 should be de-energized when the switch is ON in order to engage brakes. The solenoid Y41 should be energized when the switch is OFF in order to release brakes. Check parking brake pressure on the auxiliary valve. See Hydraulic schematic for correct measuring point
	Brake cylinders worn, out of adjustment or springs are broken.	Inspect and repair brake cylinders.
<i>Parking brake does not release when parking brake switch is OFF</i>	Insufficient hydraulic pressure in parking brake circuit to release spring applied brake.	Check parking brake pressure on the auxiliary valve. See for example Operator's manual F063723, for procedures to test and adjust pressures.
<i>Work brake does not engage when parking brake is disengaged.</i>	Work brake solenoid Y41W malfunction.	Inspect solenoid Y41W at brake valve. Replace if necessary. Check brake pressure at MB4 and MB5 at brake valve. Pressures should be between 6. Operator's ma



NO. 635254 A 0 8/15



Thank you very much
for your reading.
Please click here
to get more information.