

John Deere 3520 and 3522 Sugar Cane Harvester PIN Prefix NW Service Repair Technical Manual (TM100419)

27D Excavator Diagnostic

OPERATION AND TEST MANUAL

Compact models 27D

TM2355 19JUL14 (ENGLISH)

For complete service information also see:

27D Excavator Repair	TM2356
Alternators and Starting Motors	CTM77
Super Caddy Oil Cleanup Procedure	CTM310
Hydraulic Cylinders	CTM120519
JDG10274 Ultrasonic Undercarriage Measurement Gauge	CTM10001



John Deere Construction and Forestry

Type: Service Manual

Language: English

Pages: 1363

Format: PDF

Features: Bookmarked, searchable, printable

Compatibility: Windows/Mac/Tablet/Mobile

This service manual contains important information for the maintenance, troubleshooting and servicing of the **John Deere 3520 and 3522 Sugar Cane Harvester PIN Prefix NW Service Repair Technical Manual (TM100419)**

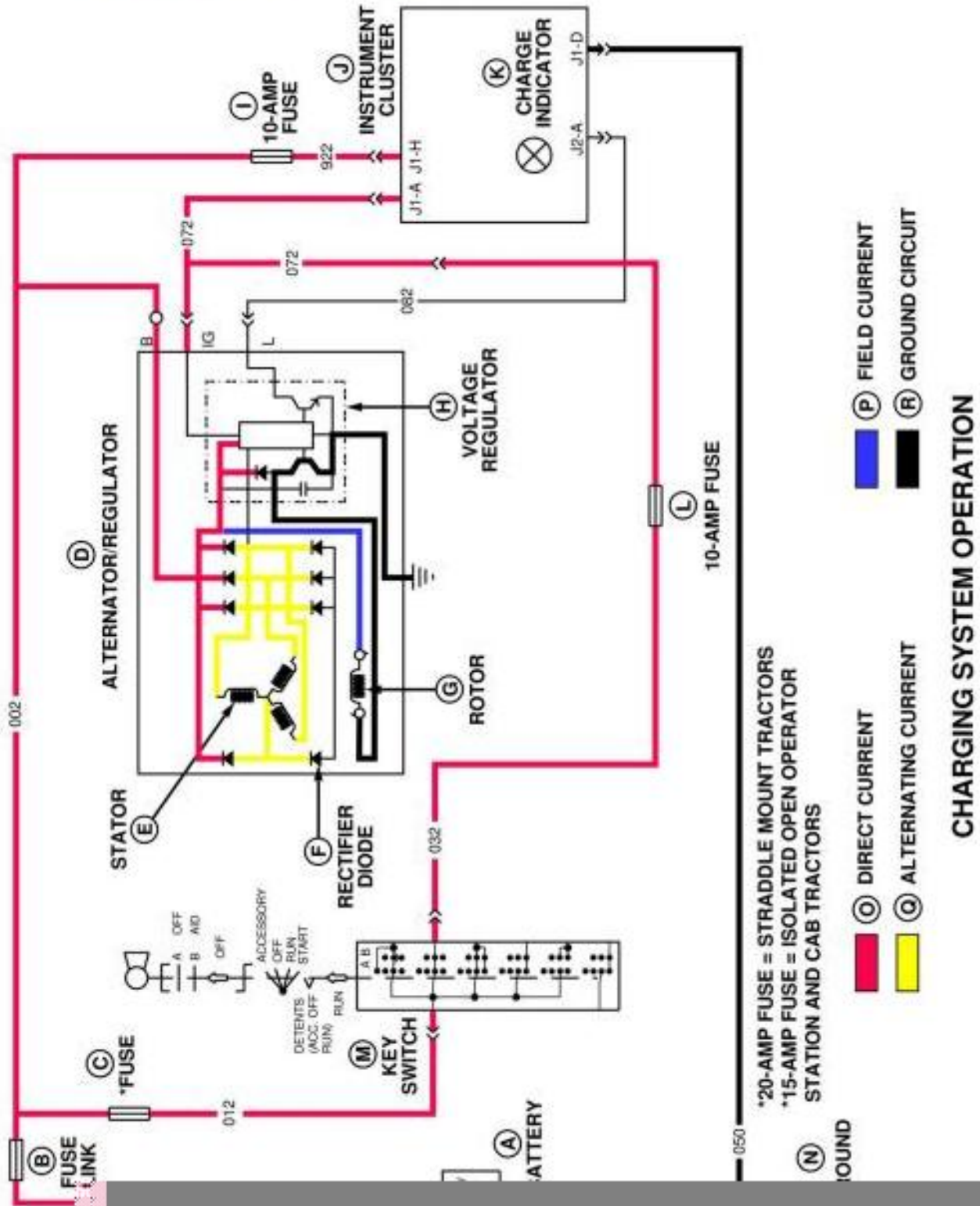
In this manual you will find detailed specifications, illustrations, schematics, diagrams and step-by-step procedures to properly service and diagnose the machine to the manufacturer's standards.

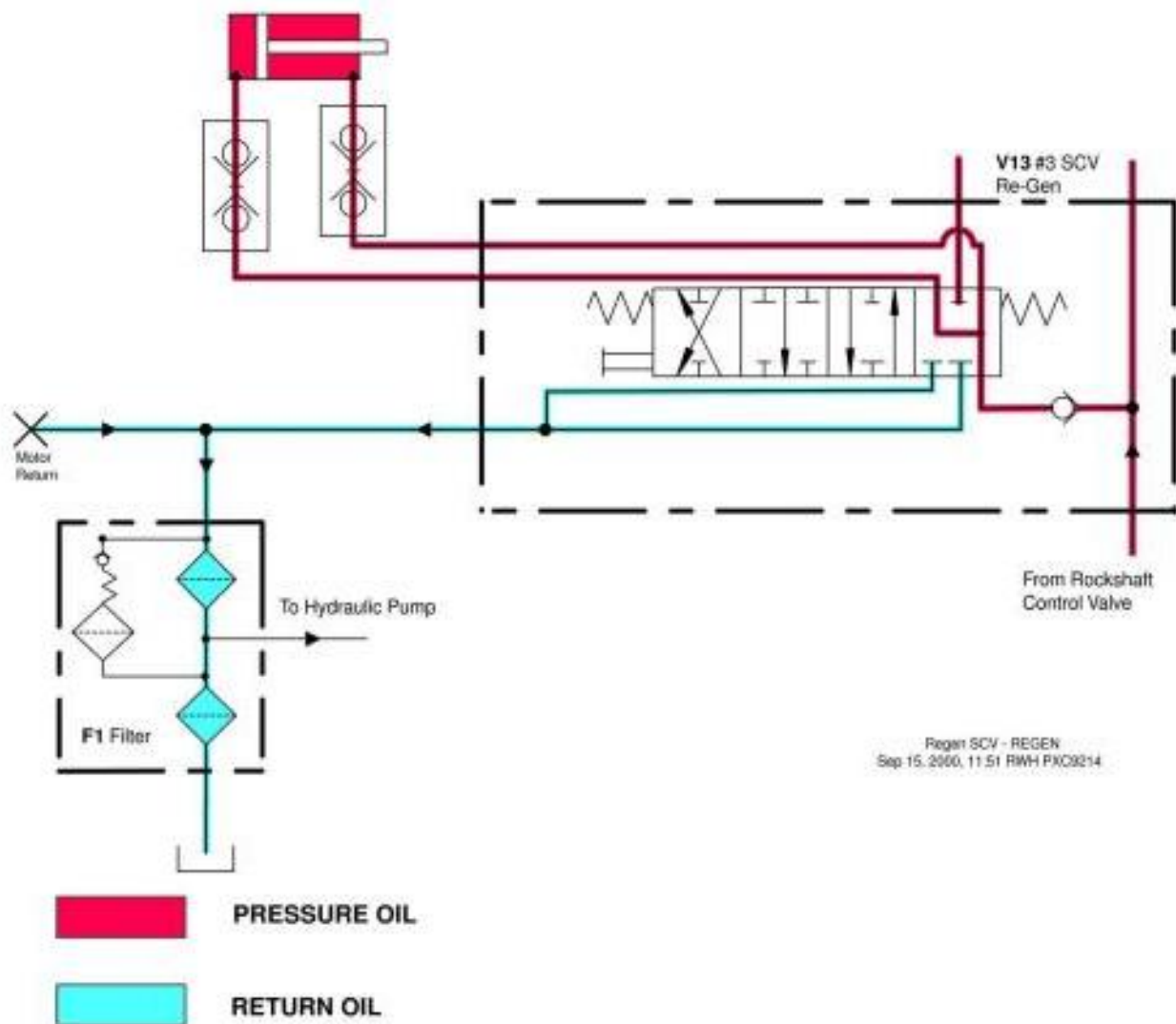
Contents:

- General Information
- Specifications
- Serial Number Location
- Engine Specifications
- Engine Diagnostics
- Engine Tests and Adjustments
- Engine Repair
- Power Train
- Transmission
- Axles
- Differential
- PTO
- Hydraulic System
- Electrical System
- Electrical Tests and Diagnostics
- Wiring Diagram / Schematic
- Ignition and Charging
- Steering
- Brakes
- Wheels
- Operator's Platform
- Body Panels
- Disassembly and Assembly
- Diagnostics, Tests and Adjustments
- Troubleshooting
- and much more...

Please note this manual is in **downloadable PDF format only**. If you have any questions about this product or would like to request sample pages, please contact us and reference the product name or SKU.

Charging System Operation





Regenerative SCV #3 Operation-Regen

Pushing SCV #3 control lever completely forward moves spool to regenerative position. The main galley is blocked and oil is diverted to load check valve. When load check valve opens, oil flows to both extend and retract ports. Oil returning from rod end of cylinder supplements flow passing to head end of cylinder, causing faster cylinder travel. Return path to sump is closed. There is no detent for regenerative position, spool will return to neutral when released by operator.

Ref. 270-15C-004 Component Location



Thank you very much
for your reading.
Please click here
to get more information.