

# John Deere 410K (iT4/S3B) Backhoe Loader (SN from 219607) Diagnostic & Test Service Manual (TM12493)

**7210R, 7230R,  
7250R, 7270R,  
7290R & 7310R  
Tractors (Repair  
Only)**

## **REPAIR MANUAL**

**7210R, 7230R, 7250R, 7270R, 7290R, 7310R (S.N. 080001-093999)**

**TM118919 14AUG15 (ENGLISH)**

For complete service information also see:

7210R, 7230R, 7250R, 7270R, 7290R, 7310R (7R) Tractors Diagnostic tm118819

GreenStar 3 2630 Display Technical Solutions Manual tm112219

GreenStar 2 Diagnosis and Tests Manual tm1061



John Deere Agriculture

**Covers:** 410K,1T0410KX\*\*E219607-)

**Type:** Service Manual

**Language:** English

**Pages:** 1188

**Format:** PDF

**Features:** Bookmarked, searchable, printable

**Compatibility:** Windows/Mac/Tablet/Mobile

This service manual contains important information for the maintenance, troubleshooting and servicing of the **John Deere 410K (IT4/S3B) Backhoe Loader (SN from 219607) Diagnostic & Test Service Manual (TM12493)**

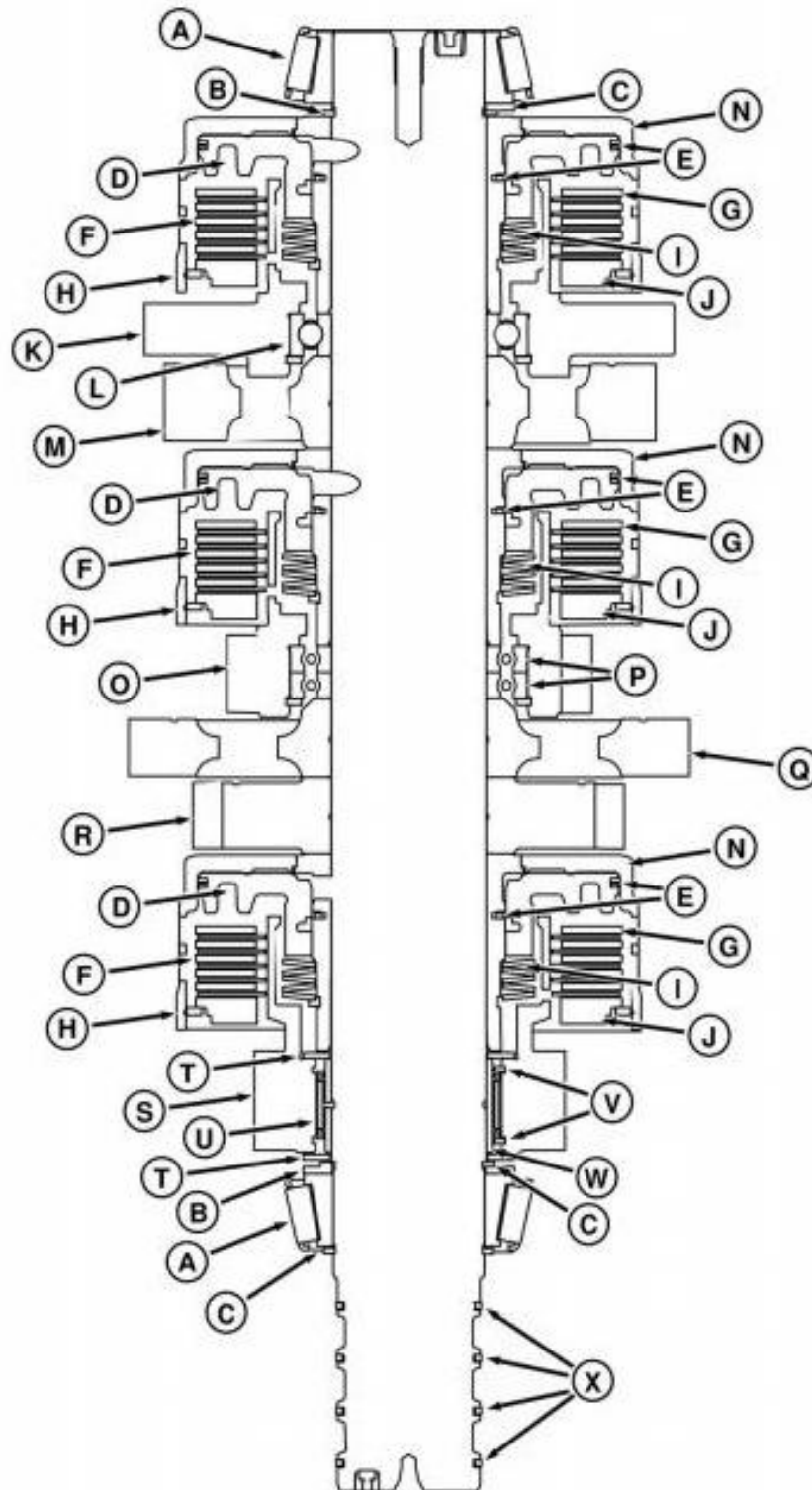
In this manual you will find detailed specifications, illustrations, schematics, diagrams and step-by-step procedures to properly service and diagnose the machine to the manufacturer's standards.

**Contents:**

- General Information
- Specifications
- Serial Number Location
- Engine Specifications
- Engine Diagnostics
- Engine Tests and Adjustments
- Engine Repair
- Power Train
- Transmission
- Axles
- Differential
- PTO
- Hydraulic System
- Electrical System
- Electrical Tests and Diagnostics
- Wiring Diagram / Schematic
- Ignition and Charging
- Steering
- Brakes
- Wheels
- Operator's Platform
- Body Panels
- Disassembly and Assembly
- Diagnostics, Tests and Adjustments
- Troubleshooting
- and much more...

Please note this manual is in **downloadable PDF format only**. If you have any questions about this product or would like to request sample pages, please contact us and reference the product name or SKU.

# Cross-Sectional View—Transmission B Countershaft Assembly—e23™

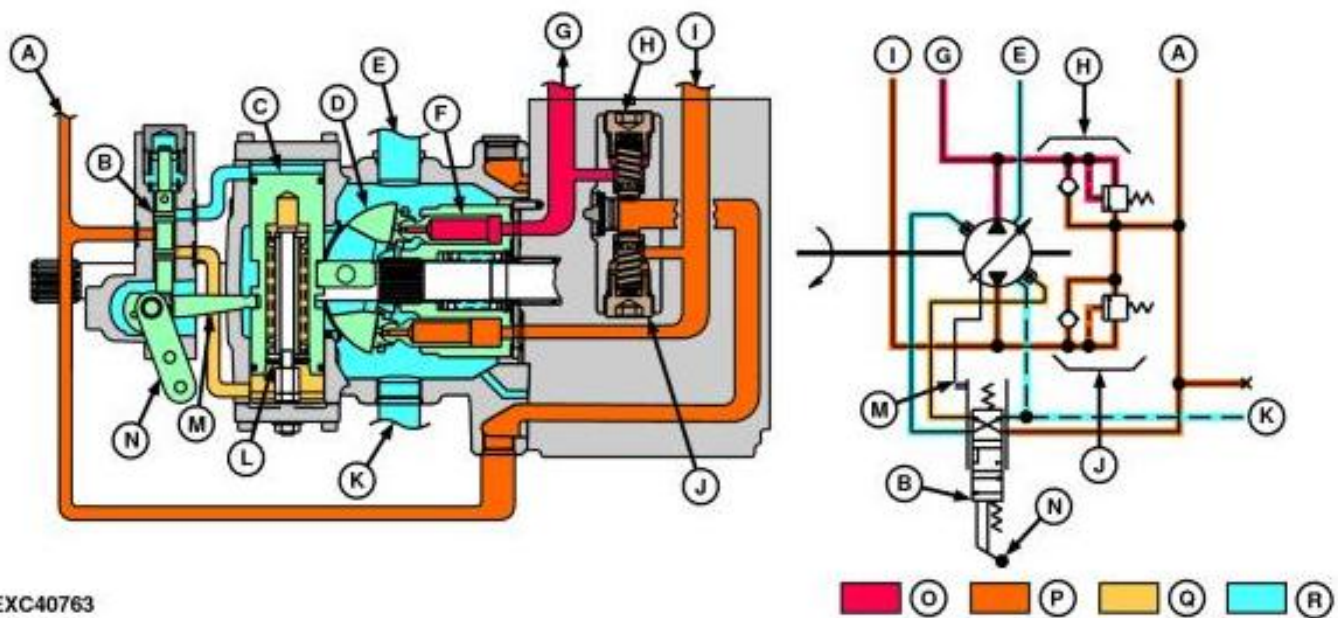


## Cross-Sectional View—Transmission B Countershaft Assembly

### LEGEND:

- A Bearings (2 used)
- B Thrust Washers (2 used)
- C Snap Rings (3 used)

## Ground Drive Pump-Reverse Operation



## Ground Drive Pump-Reverse Operation

### LEGEND:

- A From Auxiliary-Charge Pump
- B Spool
- C Servo Piston
- D Camplate
- E From Oil Cooler
- F Piston Assembly
- G To Drive Motor
- H Relief Valve (P)
- I From Drive Motor
- J To Drive Motor
- K To Drive Motor
- L To Drive Motor
- M To Drive Motor
- N To Drive Motor



Thank you very much  
for your reading.  
Please click here  
to get more information.