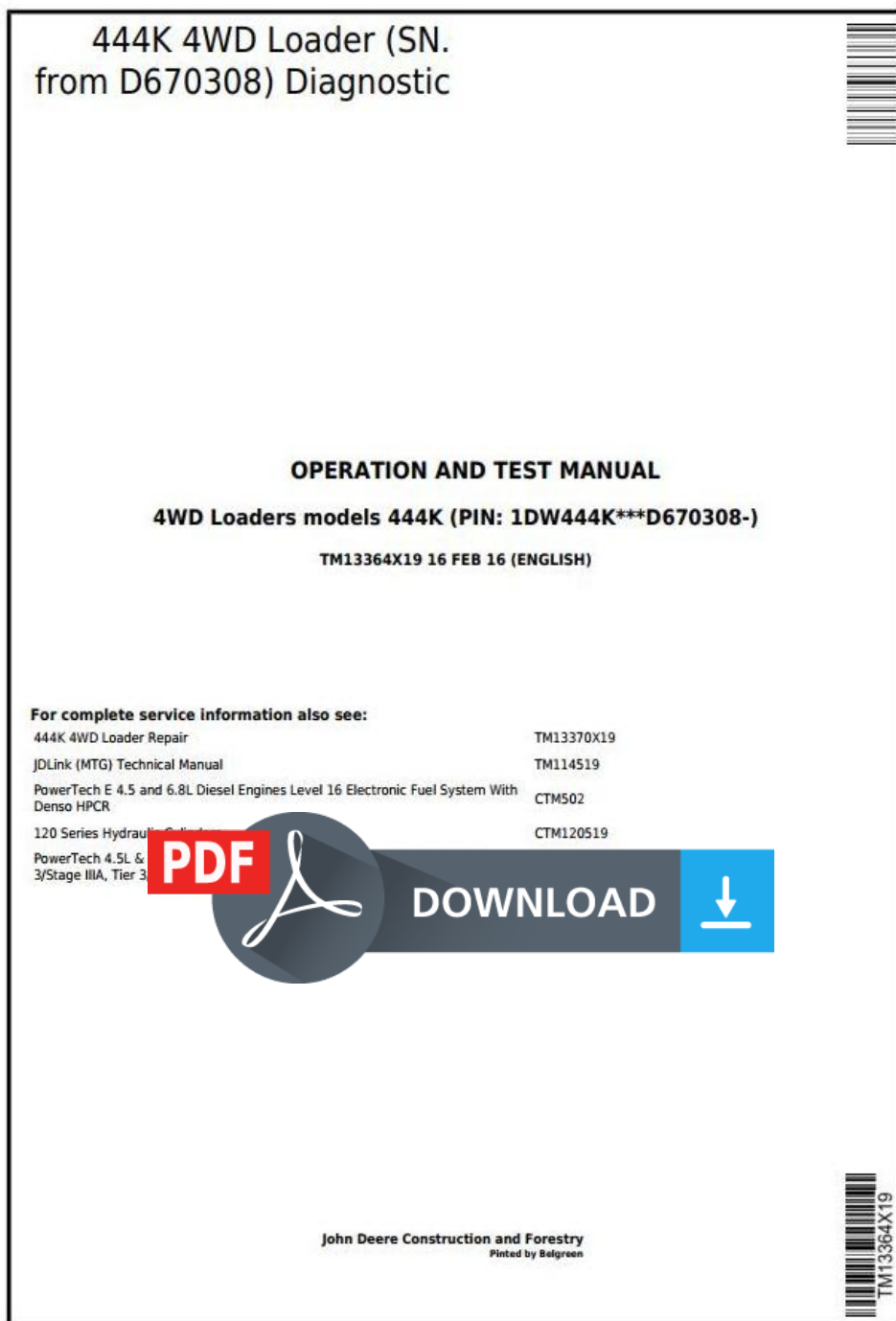


John Deere 444K 4WD Loader (SN. from D670308) Diagnostic, Operation&Test Service Manual (TM13364X19)



Covers: 444K,1DW444K***D670308-)

Type: Service Manual

Language: English

Pages: 1346

Format: PDF

Features: Bookmarked, searchable, printable

Compatibility: Windows/Mac/Tablet/Mobile

This service manual contains important information for the maintenance, troubleshooting and servicing of the **John Deere 444K 4WD Loader (SN. from D670308) Diagnostic, Operation&Test Service Manual (TM13364X19)**

In this manual you will find detailed specifications, illustrations, schematics, diagrams and step-by-step procedures to properly service and diagnose the machine to the manufacturer's standards.

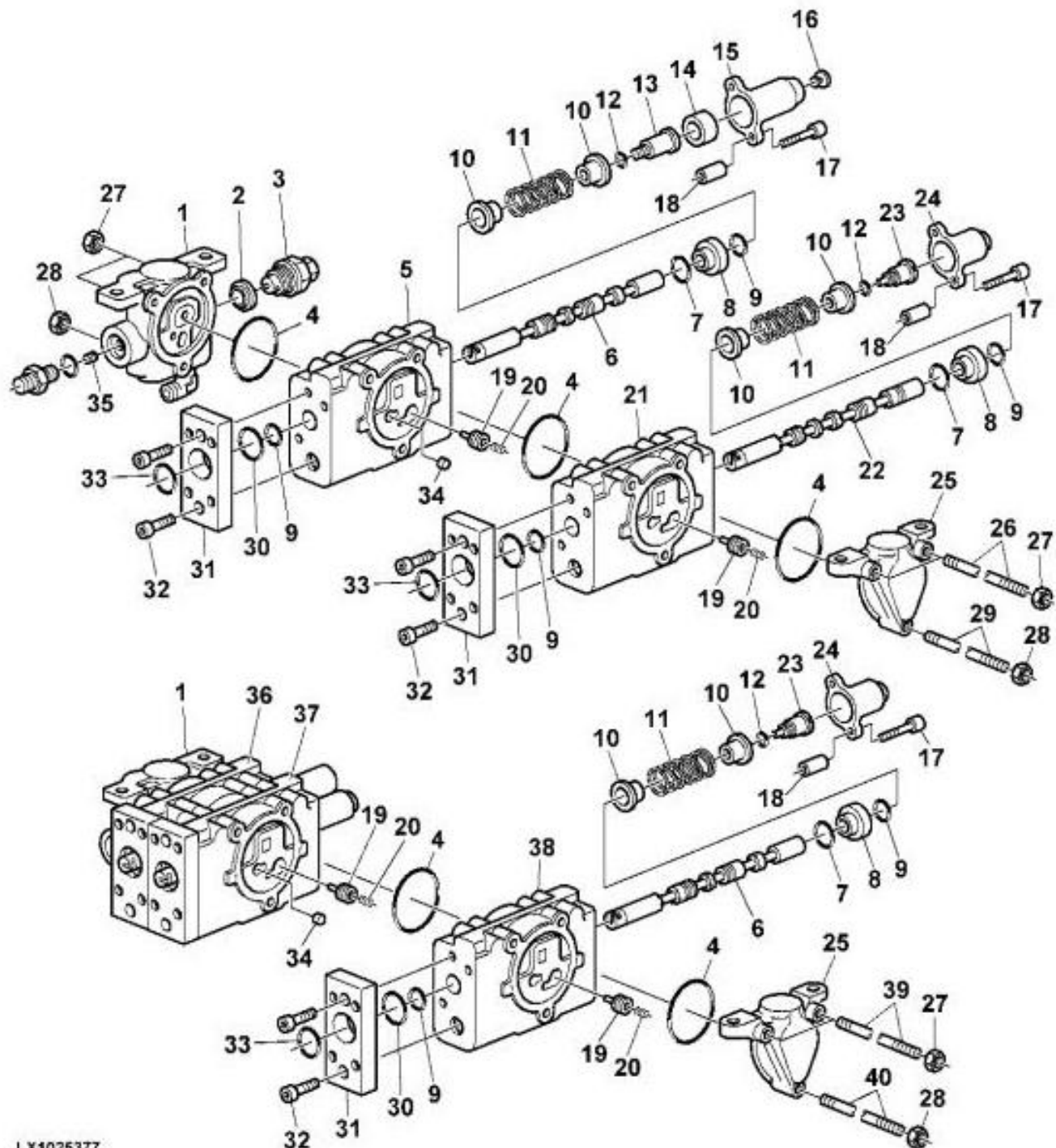
Contents:

- General Information
- Specifications
- Serial Number Location
- Engine Specifications
- Engine Diagnostics
- Engine Tests and Adjustments
- Engine Repair
- Power Train
- Transmission
- Axles
- Differential
- PTO
- Hydraulic System
- Electrical System
- Electrical Tests and Diagnostics
- Wiring Diagram / Schematic
- Ignition and Charging
- Steering
- Brakes
- Wheels
- Operator's Platform
- Body Panels
- Disassembly and Assembly
- Diagnostics, Tests and Adjustments
- Troubleshooting
- and much more...

Please note this manual is in **downloadable PDF format only**. If you have any questions about this product or would like to request sample pages, please contact us and reference the product name or SKU.

Repairing the Control Valves (Electrical Actuation)

Disassembling the control valves



LX1025377

Control valves (electrical actuation)

LEGEND:

- 1 Inlet plate
- 2 Seal ring
- 3 Pressure-limiting valve

This diagram illustrates the electrical system components of the John Deere 7000 Series skid steer loader. The components are labeled with letters A through V, corresponding to the parts list provided. The diagram shows the engine compartment, the operator's seat area, and the rear of the machine. Key components include the 20-pin connector (A), the battery (B), the fuse block (C), the alternator (D), the starter motor (E), the ignition switch (F), the horn (G), the rearview mirror (H), the seat heater (I), the seat switch (J), the seat belt switch (K), the seat switch (L), the seat switch (M), the seat switch (N), the seat switch (O), the seat switch (P), the seat switch (Q), the seat switch (R), the seat switch (S), the seat switch (T), the seat switch (U), the seat switch (V), and the seat switch (W).



Thank you very much
for your reading.
Please click here
to get more information.