

John Deere 470GLC Excavator Troubleshooting, Operation and Test Service Manual (TM13173X19)

W540, W550, W650,
W660, T550, T560, T660,
T670 Combines - MY2014
Repair



JOHN HARE



COLLECTION

REPAIR TECHNICAL MANUAL

Combines MY2014 with Wide Cab models W540, W550, W650, W660, T550, T560,
T670, T660 (Worldwide Edition)

TM406219 29 DEC 13 (ENGLISH)

For complete service information also see:

W540, W550, W650, W660, T550, T560, T660 & T670 Combines Diagnostic	TM406119
GreenStar 3 2630 Display Technical Solutions Manual	TM112219
PowerTech 9.0L OEM Diesel Engines 6000, 6000 / Stage IIIA Emissions Certified Base Engine Repair	CTM400
PowerTech 6090 High Pressure Com	
PowerTech 4045, 6068 Diesel Denso High Pressure Comm	
6090 PowerTech Diesel Engine	
PowerTech 4.5L & 6.8L Diesel Engines Stage I, Tier 2/Stage II, Tier 3/Stage IIIA, Tier 3/Stage IIA Tier 3/Stage III, (Base Engine)	CTM104



DOWNLOAD



John Deere Agriculture
Printed by Belgreen



Covers: 470GLC,1FF470GX_C047001-)

Type: Service Manual

Language: English

Pages: 2

Format: PDF

Features: Bookmarked, searchable, printable

Compatibility: Windows/Mac/Tablet/Mobile

This service manual contains important information for the maintenance, troubleshooting and servicing of the **John Deere 470GLC Excavator Troubleshooting, Operation and Test Service Manual (TM13173X19)**

In this manual you will find detailed specifications, illustrations, schematics, diagrams and step-by-step procedures to properly service and diagnose the machine to the manufacturer's standards.

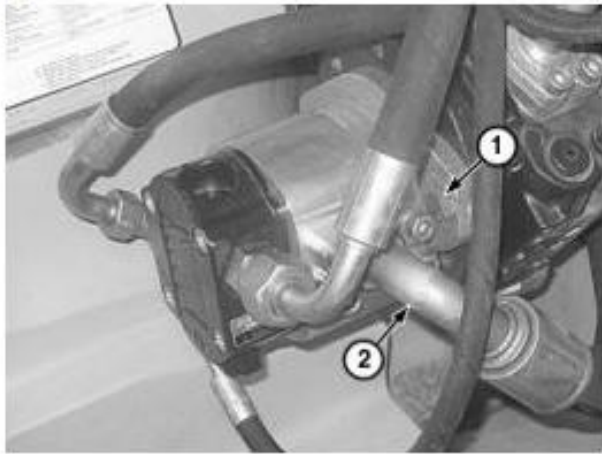
Contents:

- General Information
- Specifications
- Serial Number Location
- Engine Specifications
- Engine Diagnostics
- Engine Tests and Adjustments
- Engine Repair
- Power Train
- Transmission
- Axles
- Differential
- PTO
- Hydraulic System
- Electrical System
- Electrical Tests and Diagnostics
- Wiring Diagram / Schematic
- Ignition and Charging
- Steering
- Brakes
- Wheels
- Operator's Platform
- Body Panels
- Disassembly and Assembly
- Diagnostics, Tests and Adjustments
- Troubleshooting
- and much more...

Please note this manual is in **downloadable PDF format only**. If you have any questions about this product or would like to request sample pages, please contact us and reference the product name or SKU.

Charge Pump Remove and Install

[1] -



LEGEND:

- 1 Cap Screw (2 used)
- 2 Hydraulic Line

Charge Pump

Drain hydraulic reservoir or apply a vacuum to retain oil in reservoir. [See Drain and Refill Capacities](#). (Operator's Manual.)

[2] -

→NOTE:

Close all hose and fitting openings using caps and plugs to prevent contamination of hydraulic system.

Disconnect hydraulic line (2).

[3] -



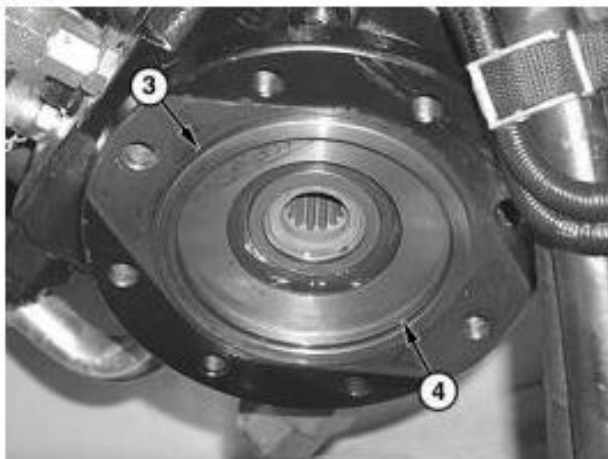
CAUTION:

Prevent possible crushing injury from heavy component. Use appropriate lifting device.

Remove cap screws (1), washers, and main hydraulic pump.

Item	Measurement	Specification
Main Hydraulic Pump	Weight (approximate)	16 kg 35 lb.

[4] -



LEGEND:

- 3 Seal Ring Retainer
- 4 O-Ring

Seal Ring Retainer

Remove seal ring retainer (3) and O-ring (4).

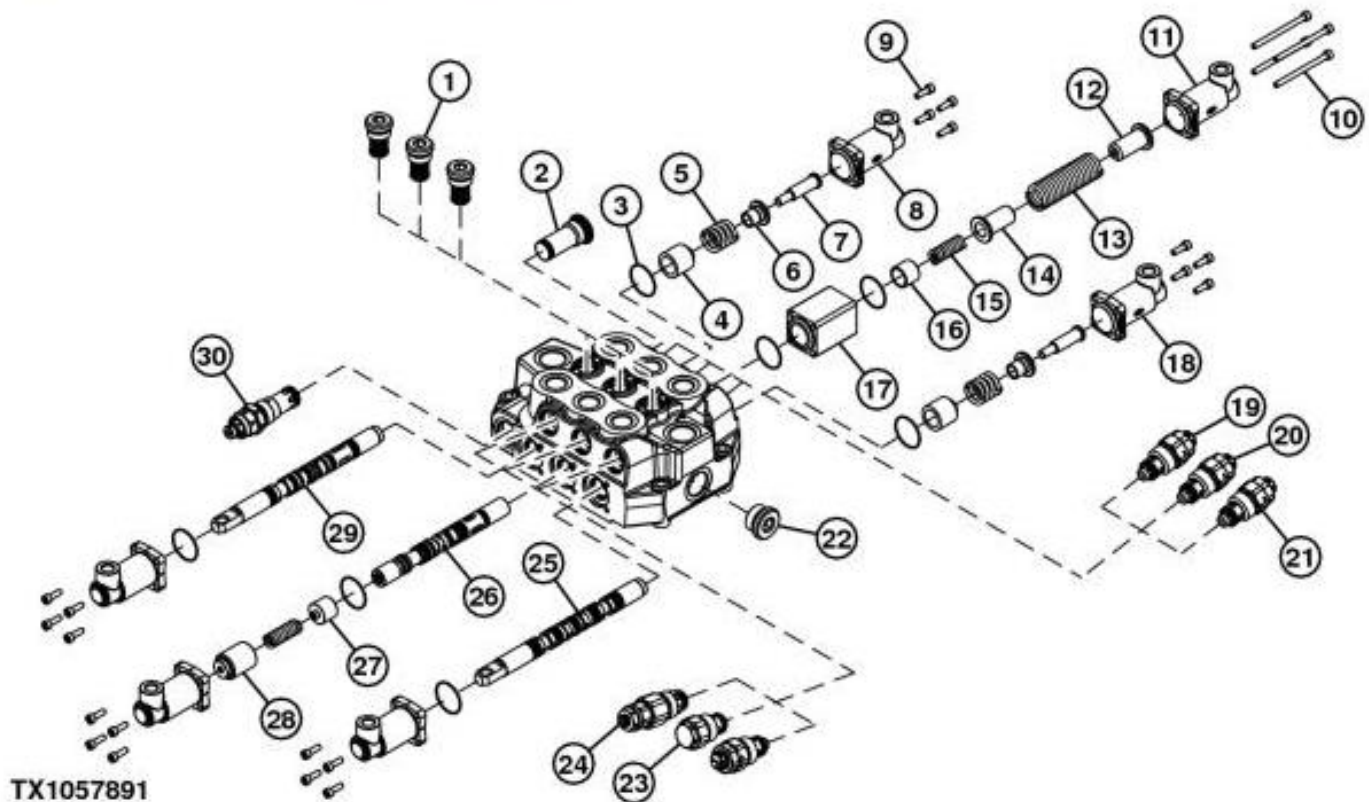
[5] -

Loader Control Valve Disassemble and Assemble

[1] -

→NOTE:

Clean loader control valve as necessary before disassembling.



TX1057891

Loader Control Valve

LEGEND:

1	Load Holding Valve (3 used)
2	Plug
3	O-Ring (7 used)
4	Spring Retainer (2 used)
5	Spring (2 used)
6	Spring Retainer (2 used)
7	Spool Plug (2 used)
8	Auxiliary Spool End Cap (2 used)
9	Cap Screw (20 used)
10	Cap Screw (4 used)
11	Boom Spool End Cap (2 used)
12	Spring Retainer
13	Spring
14	Spring Retainer
15	Spring (2 used)
16	Spring Retainer
17	Spacer
18	Bucket Spool End Cap (2 used)
19	Auxiliary Circuit Relief Valve
20	Boom Circuit Relief Valve
21	Bucket Circuit Relief Valve
22	Plug
23	Boom Circuit Feeder Valve
24	Auxiliary Circuit Relief Valve
25	Bucket Circuit Spool
26	Boom Circuit Spool
27	Spring Retainer
28	Spring Retainer
29	Auxiliary Circuit Spool



Thank you very much
for your reading.
Please click here
to get more information.