


John Deere 4890 Self-Propelled Hay and Forage Windrower Diagnostic and Tests Service Manual (tm1781)



4890 Self-Propelled Windrower Diagnostic




DIAGNOSIS AND TESTS MANUAL
Self-Propelled Windrowers models 4890
TM1781 30 OCT 01 (ENGLISH)

For complete service information also see:

890 Auger & Specialty Crop Platforms - Repair	TM1632
4890 Self-Propelled Windrower Repair	TM1617
Alternators and Starting Motors	CTM77
PowerTech 4.5L & 6.8L Diesel Engines Tier 1/Stage I, Tier 2/Stage II, Tier 3/Stage IIIA, Tier 3/Stage IIA, Tier 3/Stage IIB	CTM104

PDF  **DOWNLOAD** 

John Deere Agriculture
Printed by Belgroen



TM1781

Type: Service Manual

Language: English

Pages: 521

Format: PDF

Features: Bookmarked, searchable, printable

Compatibility: Windows/Mac/Tablet/Mobile

This service manual contains important information for the maintenance, troubleshooting and servicing of the **John Deere 4890 Self-Propelled Hay and Forage Windrower Diagnostic and Tests Service Manual (tm1781)**

In this manual you will find detailed specifications, illustrations, schematics, diagrams and step-by-step procedures to properly service and diagnose the machine to the manufacturer's standards.

Contents:

- General Information
- Specifications
- Serial Number Location
- Engine Specifications
- Engine Diagnostics
- Engine Tests and Adjustments
- Engine Repair
- Power Train
- Transmission
- Axles
- Differential
- PTO
- Hydraulic System
- Electrical System
- Electrical Tests and Diagnostics
- Wiring Diagram / Schematic
- Ignition and Charging
- Steering
- Brakes
- Wheels
- Operator's Platform
- Body Panels
- Disassembly and Assembly
- Diagnostics, Tests and Adjustments
- Troubleshooting
- and much more...

Please note this manual is in **downloadable PDF format only**. If you have any questions about this product or would like to request sample pages, please contact us and reference the product name or SKU.

Heater and Air Conditioner Remove and Install

[1] -

→NOTE:

Evaporator and heater core are integral parts of the air conditioner. If evaporator or heater core need replacement, replace entire air conditioner unit.

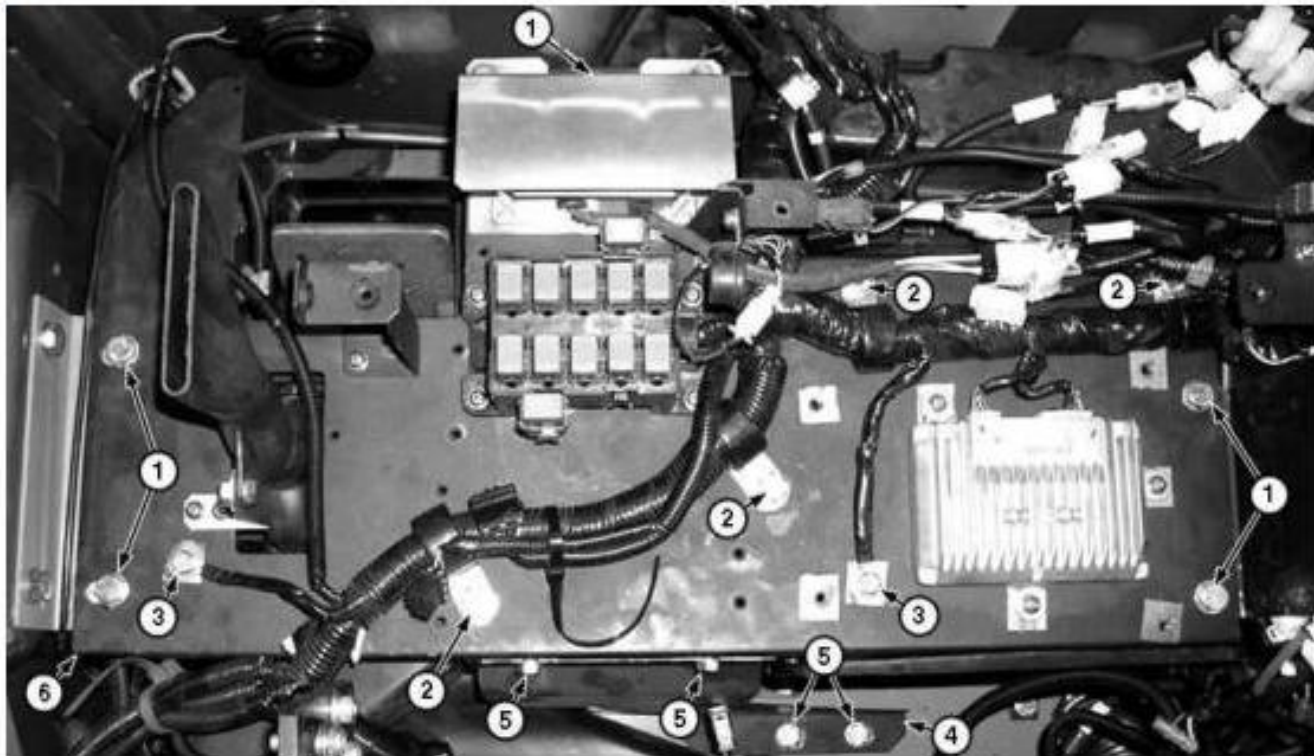
See [Refrigerant Cautions and Proper Handling](#). (Group 1830.)

[2] - [Perform Drain Cooling System](#). (Operator's Manual.) Approximate capacity is 48 L (12.7 gal).

[3] - [Perform Recover R134a Refrigerant](#). (Group 1830.)

[4] - Remove seat. See [Seat Remove and Install](#). (Group 1821.)

[5] -



Heater and Air Conditioner

LEGEND:

- | | |
|---|----------------------|
| 1 | Cap Screw (5 used) |
| 2 | Cap Screw (4 used) |
| 3 | Ground Wire (2 used) |
| 4 | Mount Bracket |
| 5 | Cap Screw (4 used) |
| 6 | Cover |

Remove cap screws (5) to remove mount bracket (4).

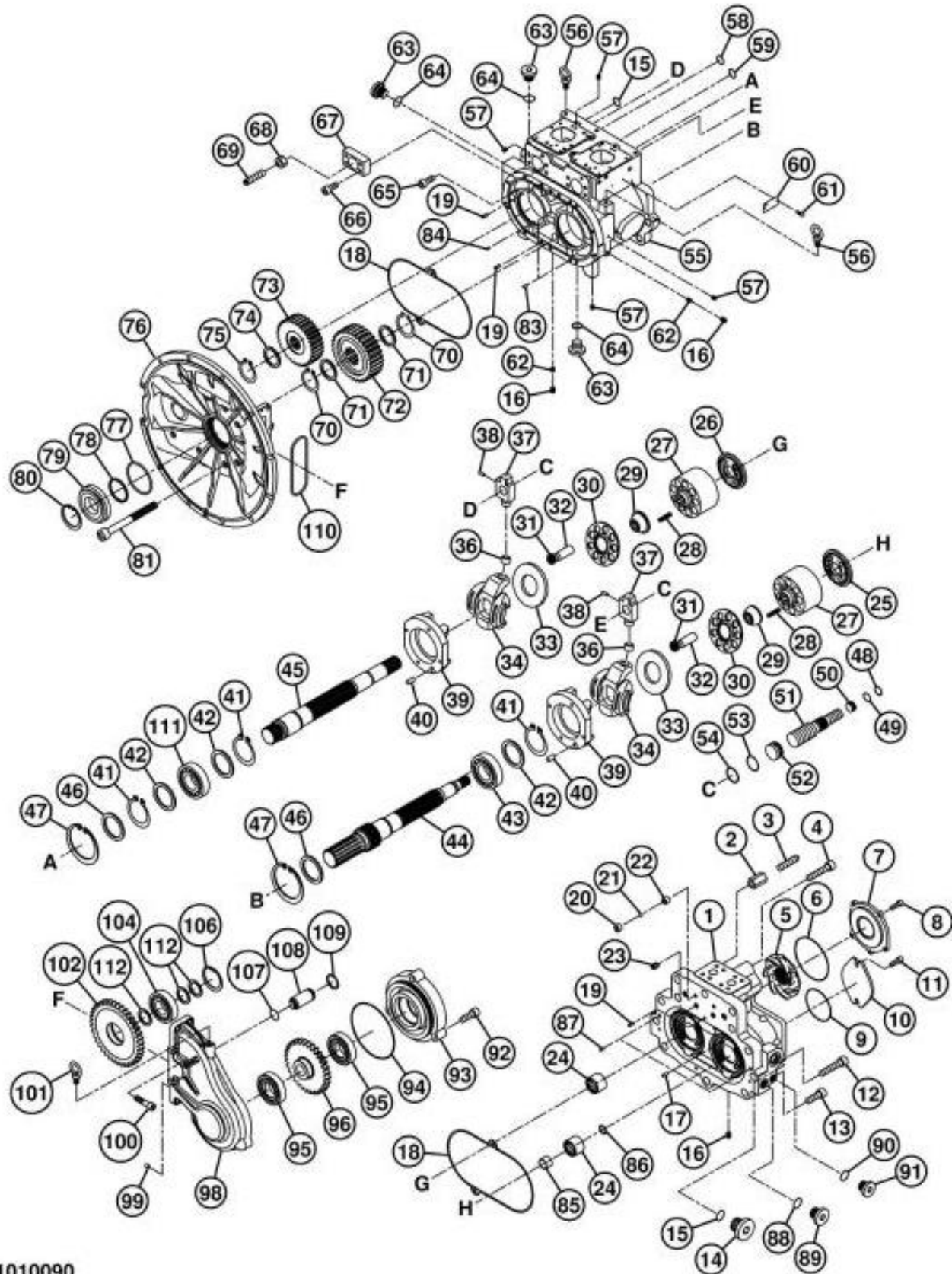
[6] - Disconnect all electrical connectors.

[7] - Remove cap screws (2) to disconnect ground wires (3).

Pump 1 and 2 Disassemble and Assemble

[1] - Remove pumps. [See Pump 1 and 2 Remove and Install.](#) (Group 3360.)

[2] -



TX1010090

Pumps 1 and 2



Thank you very much
for your reading.
Please click here
to get more information.