


John Deere 4990 Self-Propelled Hay and Forage Windrower Diagnostic and Tests Service Manual (tm1820)

1795 Planter with
MaxEmerge 5 Row Units
(SN. from 760101)
Diagnostic




JOHN HARE

COLLECTION


DIAGNOSIS AND TESTS MANUAL
MaxEmerge 5 models 1795 (SN. 760101-)
TM131719 26 MAY 15 (ENGLISH)

For complete service information also see:

1705 Series Planter Frame Repair	TM131319
MaxEmerge 5 & ExactEmerge Row Unit Repair	TM131219
Machine Connection Information	CTM441
120 Series Hydraulic Cylinders	CTM120519

PDF  **DOWNLOAD** 

John Deere Agriculture
Printed by Belgreen



TM131719

Type: Service Manual

Language: English

Pages: 1306

Format: PDF

Features: Bookmarked, searchable, printable

Compatibility: Windows/Mac/Tablet/Mobile

This service manual contains important information for the maintenance, troubleshooting and servicing of the **John Deere 4990 Self-Propelled Hay and Forage Windrower Diagnostic and Tests Service Manual (tm1820)**

In this manual you will find detailed specifications, illustrations, schematics, diagrams and step-by-step procedures to properly service and diagnose the machine to the manufacturer's standards.

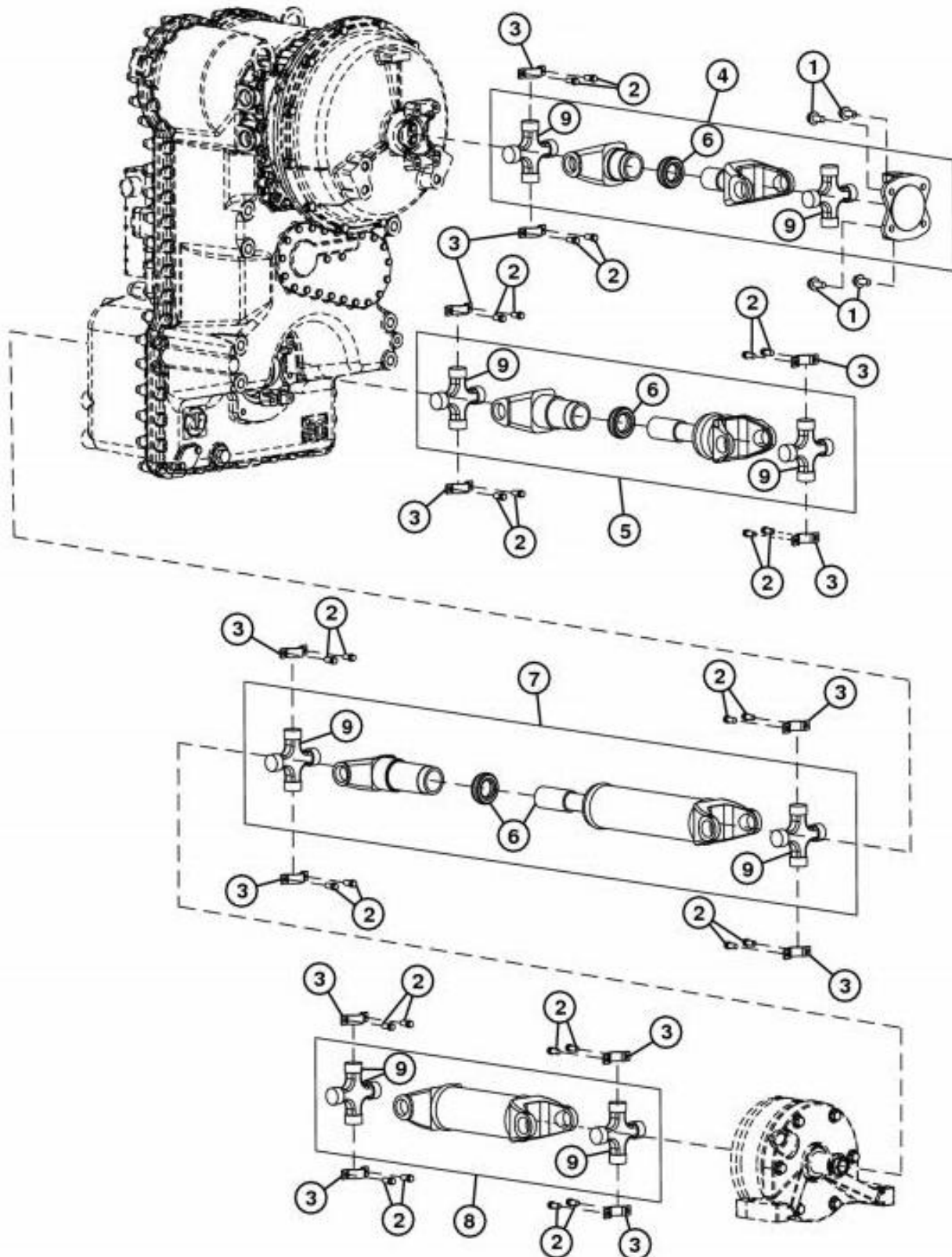
Contents:

- General Information
- Specifications
- Serial Number Location
- Engine Specifications
- Engine Diagnostics
- Engine Tests and Adjustments
- Engine Repair
- Power Train
- Transmission
- Axles
- Differential
- PTO
- Hydraulic System
- Electrical System
- Electrical Tests and Diagnostics
- Wiring Diagram / Schematic
- Ignition and Charging
- Steering
- Brakes
- Wheels
- Operator's Platform
- Body Panels
- Disassembly and Assembly
- Diagnostics, Tests and Adjustments
- Troubleshooting
- and much more...

Please note this manual is in **downloadable PDF format only**. If you have any questions about this product or would like to request sample pages, please contact us and reference the product name or SKU.

Group 0225 - Axle Shafts and U-Joints

Universal Joint and Drive Shaft Remove and Install



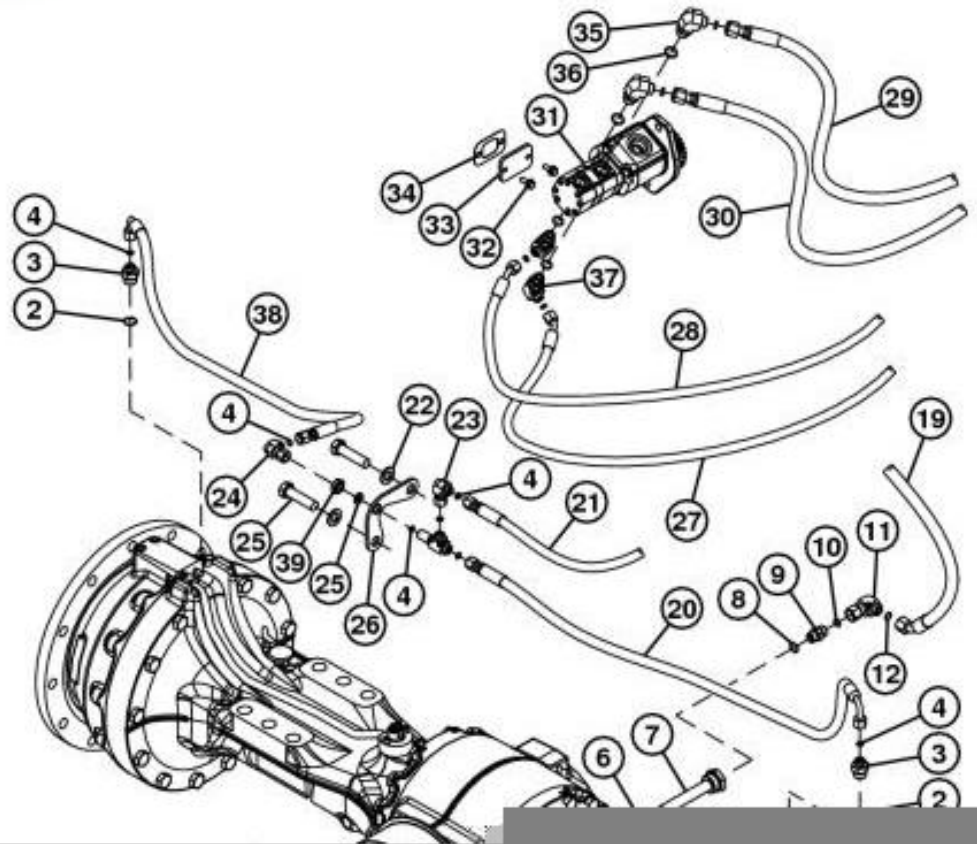
TX1021732

Universal Joint and Drive Shaft Remove and Install

LEGEND:

- 1 Cap Screw
- 2 Cap Screw

Axle Circulation System





Thank you very much
for your reading.
Please click here
to get more information.