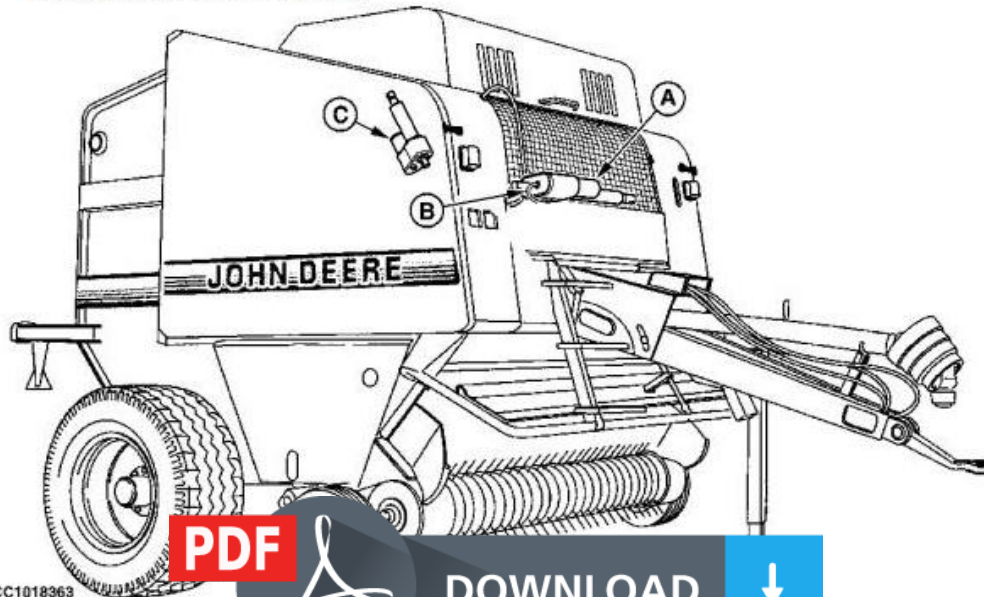


John Deere 565 and 575 Hay and Forage Round Balers All Inclusive Technical Service Manual (tm3282)

Section 40 - ELECTRICAL SYSTEM - REPAIR

Group 15: Actuators

Component Identification



CC1018363

Component Identification

LEGEND:

- A Twine actuator M1
- B Twine actuator potentiometer R1
- C Net actuator M2

In the following section, each component is identified with a letter and a number.

Type: Service Manual

Language: English

Pages: 398

Format: PDF

Features: Bookmarked, searchable, printable

Compatibility: Windows/Mac/Tablet/Mobile

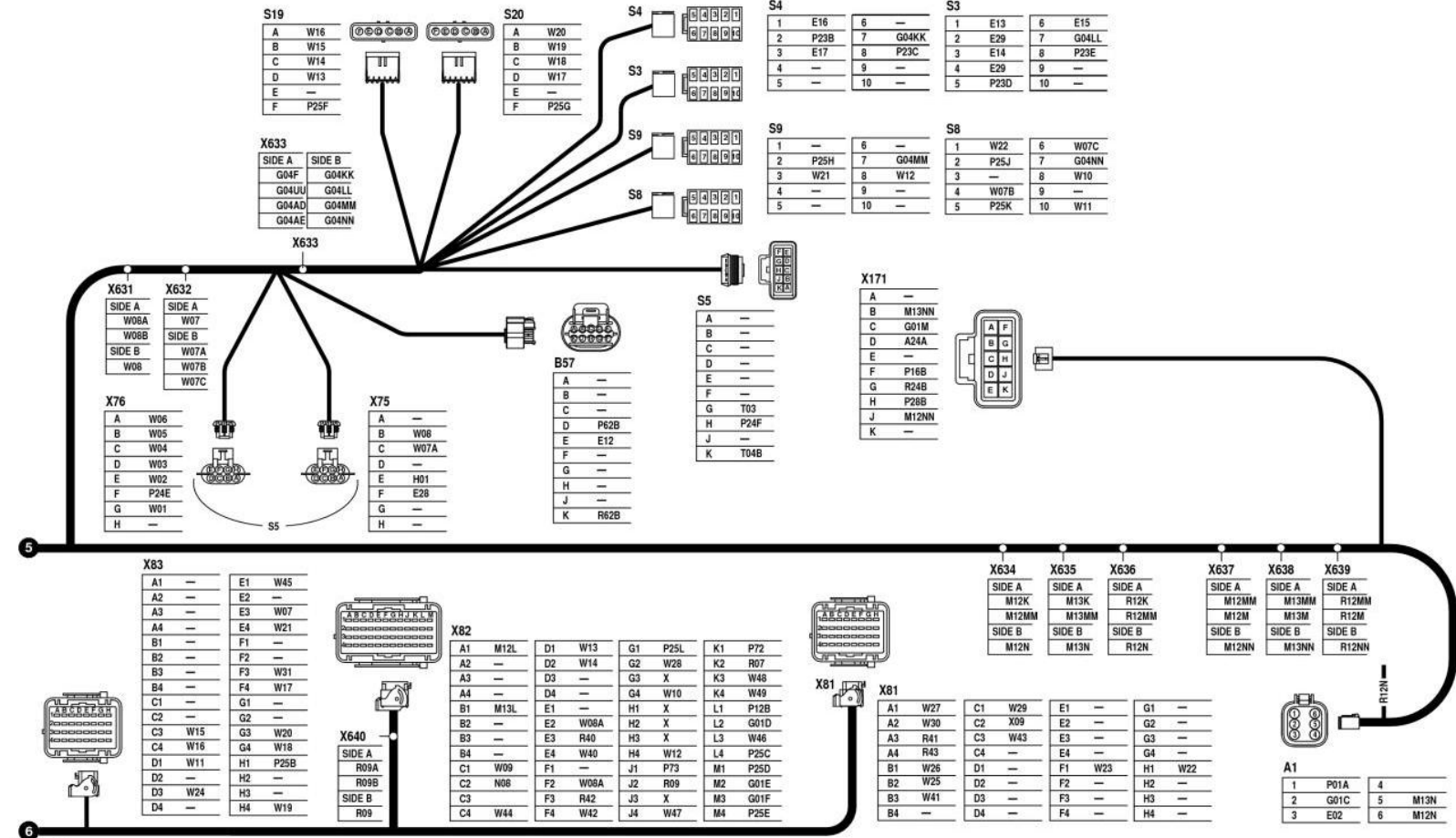
This service manual contains important information for the maintenance, troubleshooting and servicing of the **John Deere 565 and 575 Hay and Forage Round Balers All Inclusive Technical Service Manual (tm3282)**

In this manual you will find detailed specifications, illustrations, schematics, diagrams and step-by-step procedures to properly service and diagnose the machine to the manufacturer's standards.

Contents:

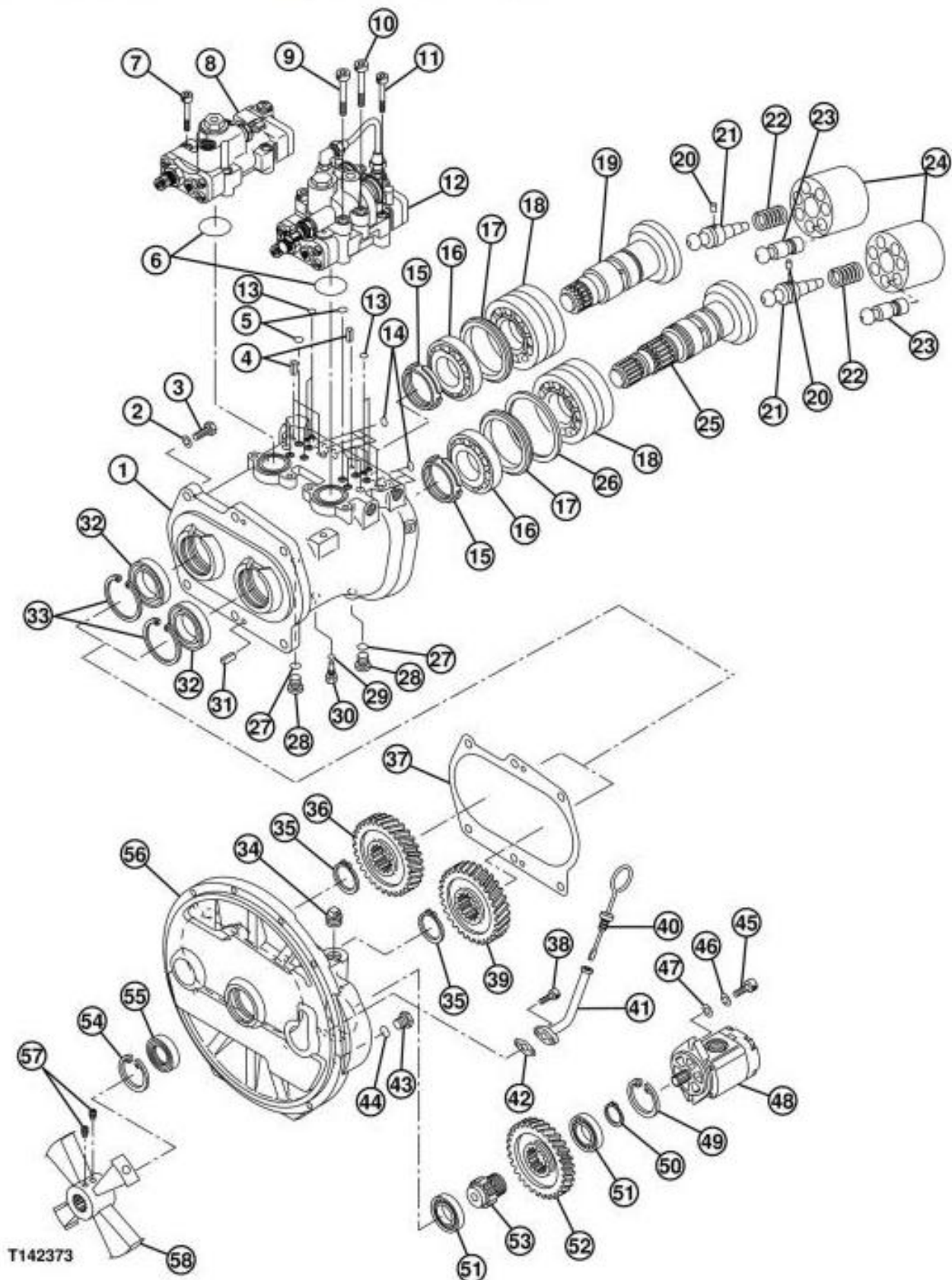
- General Information
- Specifications
- Serial Number Location
- Engine Specifications
- Engine Diagnostics
- Engine Tests and Adjustments
- Engine Repair
- Power Train
- Transmission
- Axles
- Differential
- PTO
- Hydraulic System
- Electrical System
- Electrical Tests and Diagnostics
- Wiring Diagram / Schematic
- Ignition and Charging
- Steering
- Brakes
- Wheels
- Operator's Platform
- Body Panels
- Disassembly and Assembly
- Diagnostics, Tests and Adjustments
- Troubleshooting
- and much more...

Please note this manual is in **downloadable PDF format only**. If you have any questions about this product or would like to request sample pages, please contact us and reference the product name or SKU.



TX1083069
Cab Interior Harness (W15)-6WD Wiring Diagram (5 of 5) (S.N. -637232)

Pump 1 and 2 Disassemble and Assemble



Hydraulic Pump and Pump Drive Gear Case (1 of 2)

LEGEND:

- 1 Pump Housing
- 2 Lock Washer (6 used)
- 3 Cap Screw (6 used)



Thank you very much
for your reading.
Please click here
to get more information.