

# John Deere 6100B and 6110B 2WD or MFWD - China Tractors Service Repair Manual (TM700019)

## 6100B and 6110B Tractors

### REPAIR MANUAL

China models 6100B, 6110B

TM700019 15JUN09 (ENGLISH)

For complete service information also see:

Alternators and Starting Motors	CTM77
PowerTech 4.5L and 6.8L Diesel Engines	CTM207
Mechanical Fuel Systems	
PowerTech 4.5L & 6.8L Diesel Engines Tier 1/Stage I, Tier 2/Stage II, Tier 3/Stage IIIA, Tier 3/Stage IIA Tier 3/Stage III, (Base Engine)	CTM104



John Deere Agriculture

**Covers:** 6100B,6110B

**Type:** Service Manual

**Language:** English

**Pages:** 870

**Format:** PDF

**Features:** Bookmarked, searchable, printable

**Compatibility:** Windows/Mac/Tablet/Mobile

This service manual contains important information for the maintenance, troubleshooting and servicing of the **John Deere 6100B and 6110B 2WD or MFWD - China Tractors Service Repair Manual (TM700019)**

In this manual you will find detailed specifications, illustrations, schematics, diagrams and step-by-step procedures to properly service and diagnose the machine to the manufacturer's standards.

**Contents:**

- General Information
- Specifications
- Serial Number Location
- Engine Specifications
- Engine Diagnostics
- Engine Tests and Adjustments
- Engine Repair
- Power Train
- Transmission
- Axles
- Differential
- PTO
- Hydraulic System
- Electrical System
- Electrical Tests and Diagnostics
- Wiring Diagram / Schematic
- Ignition and Charging
- Steering
- Brakes
- Wheels
- Operator's Platform
- Body Panels
- Disassembly and Assembly
- Diagnostics, Tests and Adjustments
- Troubleshooting
- and much more...

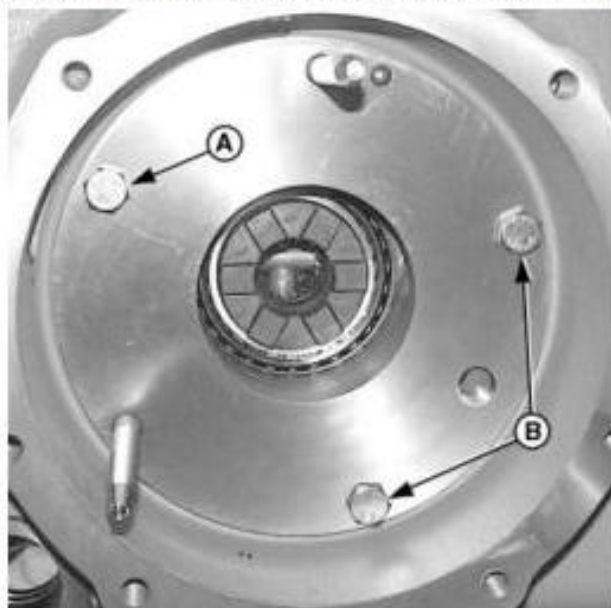
Please note this manual is in **downloadable PDF format only**. If you have any questions about this product or would like to request sample pages, please contact us and reference the product name or SKU.



g.

**Install Shims In Quill**

Install shims calculated in step 15b and install right-hand quill.



h.

**LEGEND:**

A Cap Screw  
B Cap Screw (2 used)

Apply T43512 Thread Lock and Sealer (Medium Strength) to one cap screw (A) and install into right-hand quill in line with brake linkage.

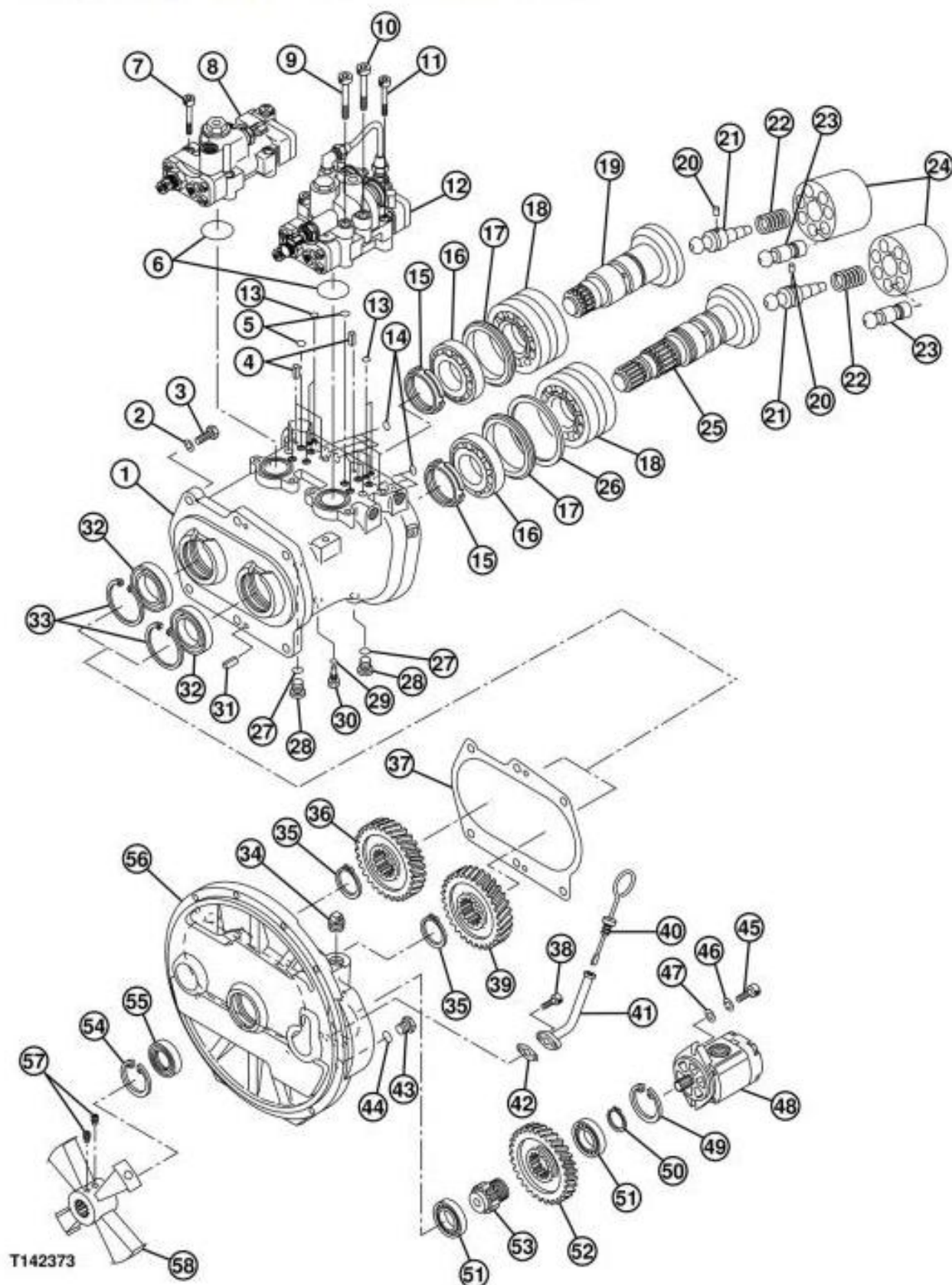
Number	Name	Use
<ul style="list-style-type: none"> <li>• T43512 (us)</li> <li>• TY9473 (canadian)</li> <li>• 242 Loctite™ (loctite)</li> </ul>	Thread Lock and Sealer (Medium Strength)	To seal cap screws.

i. Install two temporary cap screws (B) on either side of brake reaction pin.

**IMPORTANT:**

**Do not tighten cap screws until shims are installed on both right- and left-hand quills.**

# Pump 1 and 2 Disassemble and Assemble



## Hydraulic Pump and Pump Drive Gear Case (1 of 2)

### LEGEND:

- |   |                      |
|---|----------------------|
| 1 | Pump Housing         |
| 2 | Lock Washer (6 used) |
| 3 | Cap Screw (6 used)   |



Thank you very much  
for your reading.  
Please click here  
to get more information.