

John Deere 624K 4WD Loader (SN.642635-658064) w.Engine 6068HDW79, 6068HDW83 Repair Manual (TM12104)

**6103, 6203, 6403
and 6603 Tractors
Latin America,
South Africa, Asia**

DIAGNOSIS AND TESTS SERVICE MANUAL

6103, 6203, 6603, 6403

TM6021 30JAN13 (ENGLISH)



John Deere Agriculture

Covers: 624K,1DW624KZ**C642635-658064;;1DW624KZ**C642635-658064

Type: Service Manual

Language: English

Pages: 555

Format: PDF

Features: Bookmarked, searchable, printable

Compatibility: Windows/Mac/Tablet/Mobile

This service manual contains important information for the maintenance, troubleshooting and servicing of the **John Deere 624K 4WD Loader (SN.642635-658064) w.Engine 6068HDW79, 6068HDW83 Repair Manual (TM12104)**

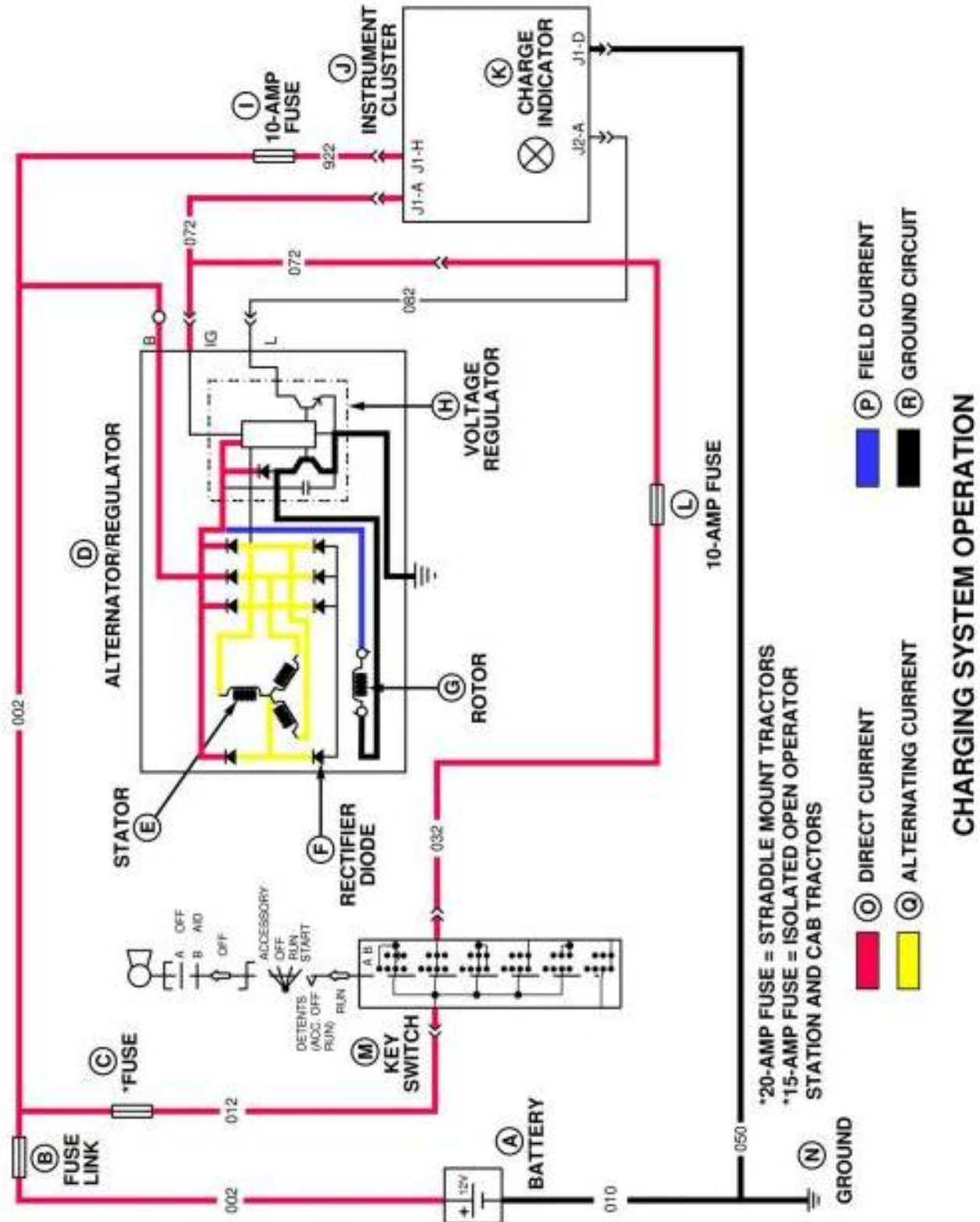
In this manual you will find detailed specifications, illustrations, schematics, diagrams and step-by-step procedures to properly service and diagnose the machine to the manufacturer's standards.

Contents:

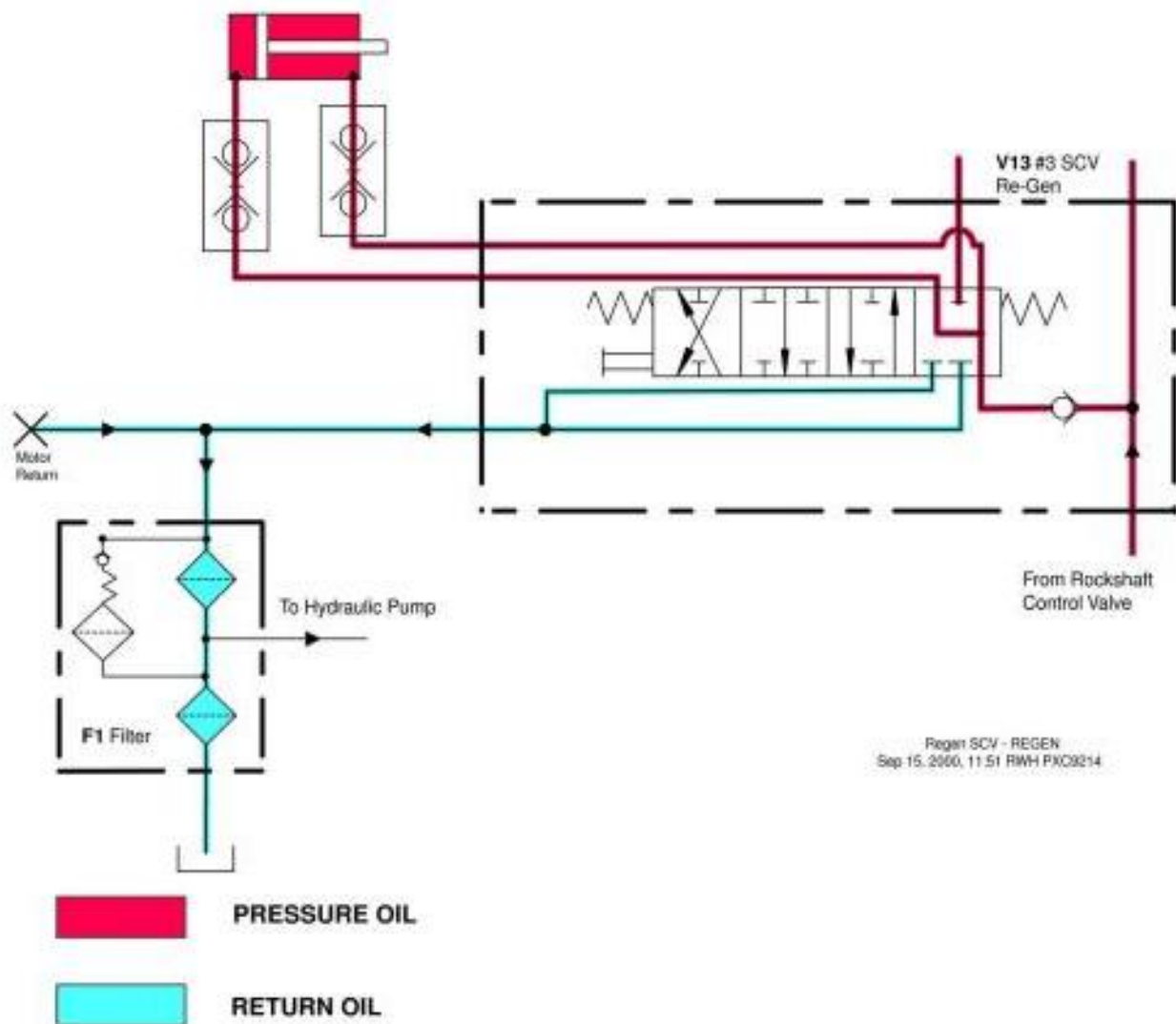
- General Information
- Specifications
- Serial Number Location
- Engine Specifications
- Engine Diagnostics
- Engine Tests and Adjustments
- Engine Repair
- Power Train
- Transmission
- Axles
- Differential
- PTO
- Hydraulic System
- Electrical System
- Electrical Tests and Diagnostics
- Wiring Diagram / Schematic
- Ignition and Charging
- Steering
- Brakes
- Wheels
- Operator's Platform
- Body Panels
- Disassembly and Assembly
- Diagnostics, Tests and Adjustments
- Troubleshooting
- and much more...

Please note this manual is in **downloadable PDF format only**. If you have any questions about this product or would like to request sample pages, please contact us and reference the product name or SKU.

Charging System Operation



CHARGING SYSTEM OPERATION



Regenerative SCV #3 Operation-Regen

Pushing SCV #3 control lever completely forward moves spool to regenerative position. The main galley is blocked and oil is diverted to load check valve. When load check valve opens, oil flows to both extend and retract ports. Oil returning from rod end of cylinder supplements flow passing to head end of cylinder, causing faster cylinder travel. Return path to sump is closed. There is no detent for regenerative position, spool will return to neutral when released by operator.

Ref. 270-15C-004 Component Location



Thank you very much
for your reading.
Please click here
to get more information.