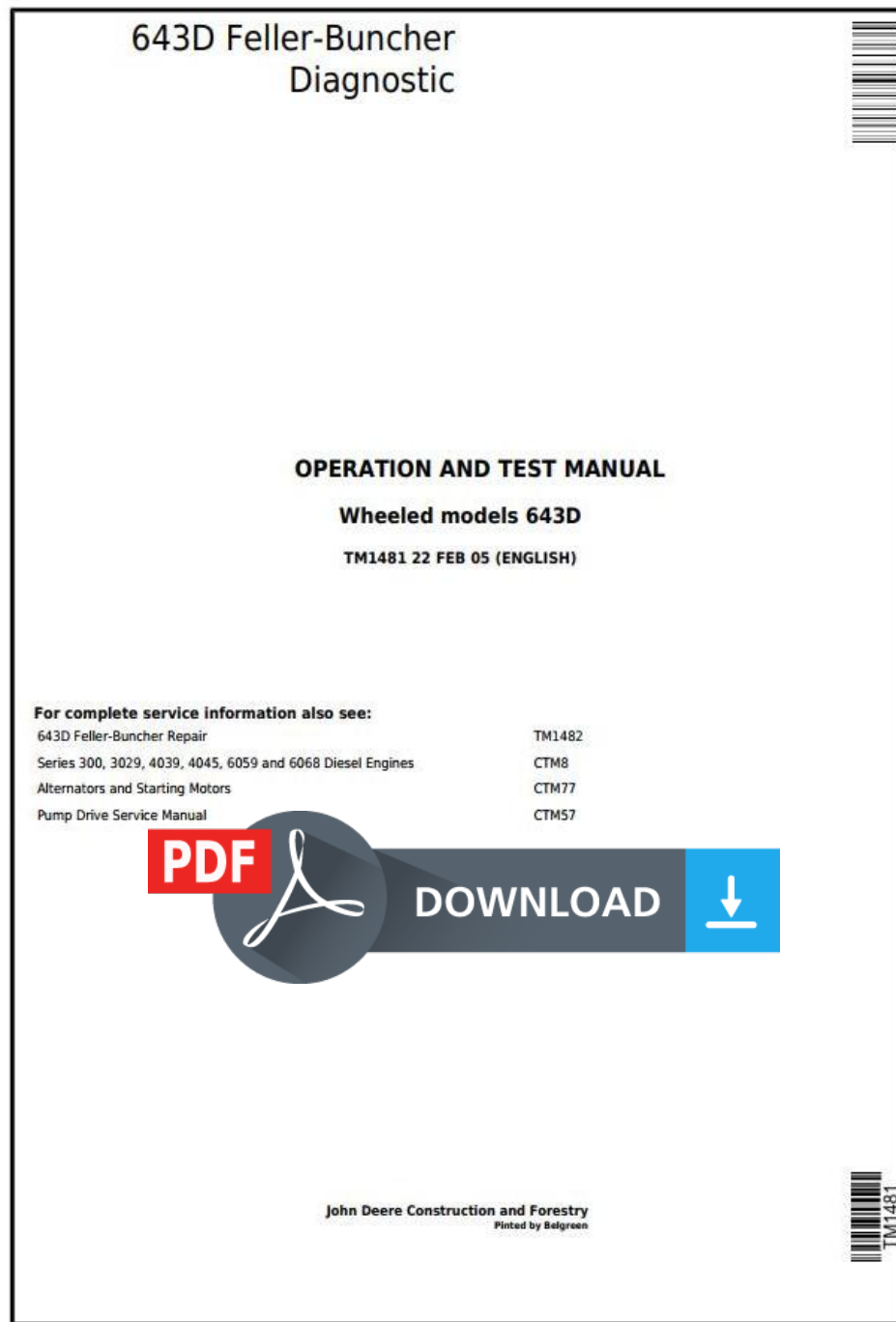


John Deere 643D Wheeled Feller Buncher Diagnostic, Operation and Test Service Manual (tm1481)



Covers: 643D

Type: Service Manual

Language: English

Pages: 888

Format: PDF

Features: Bookmarked, searchable, printable

Compatibility: Windows/Mac/Tablet/Mobile

This service manual contains important information for the maintenance, troubleshooting and servicing of the **John Deere 643D Wheeled Feller Buncher Diagnostic, Operation and Test Service Manual (tm1481)**

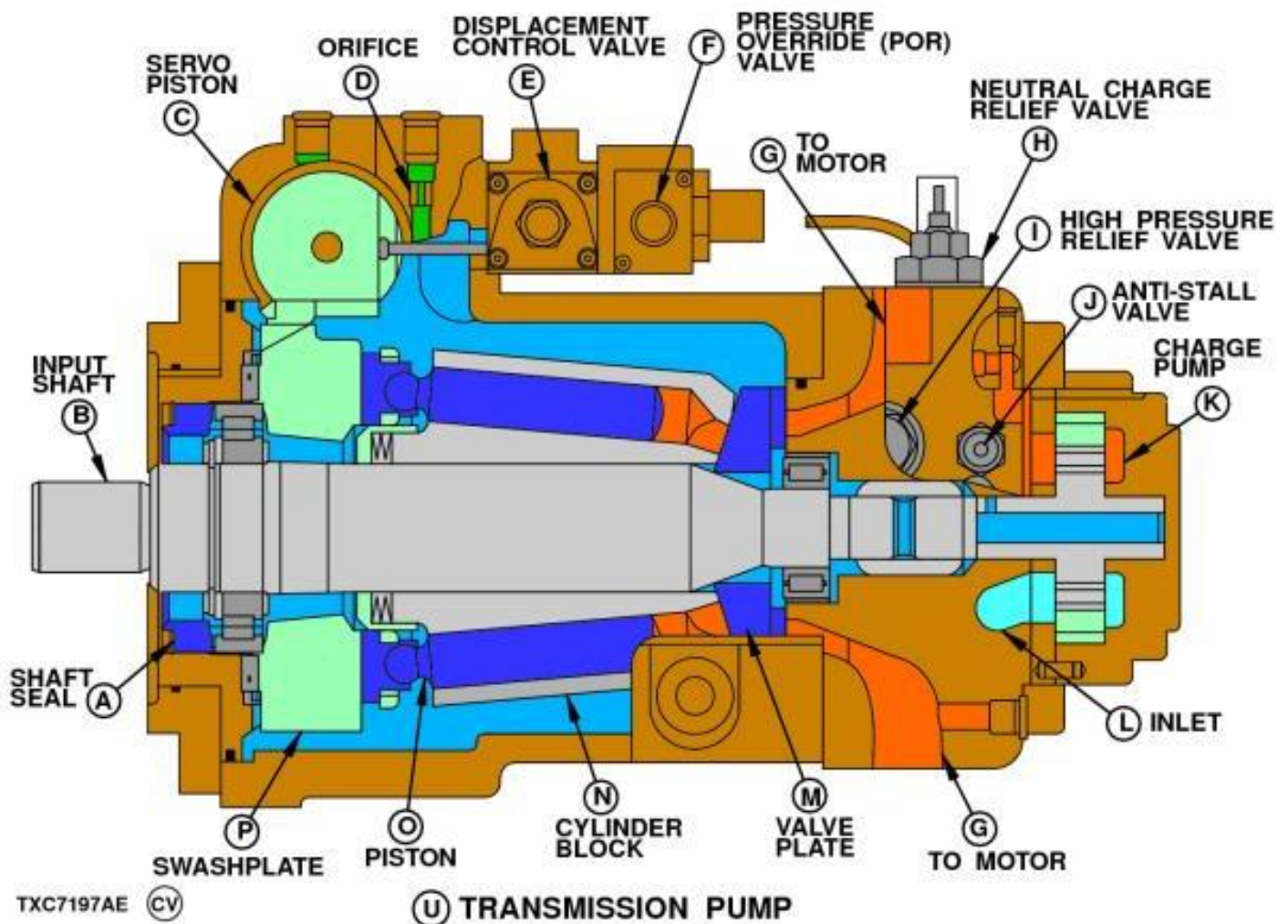
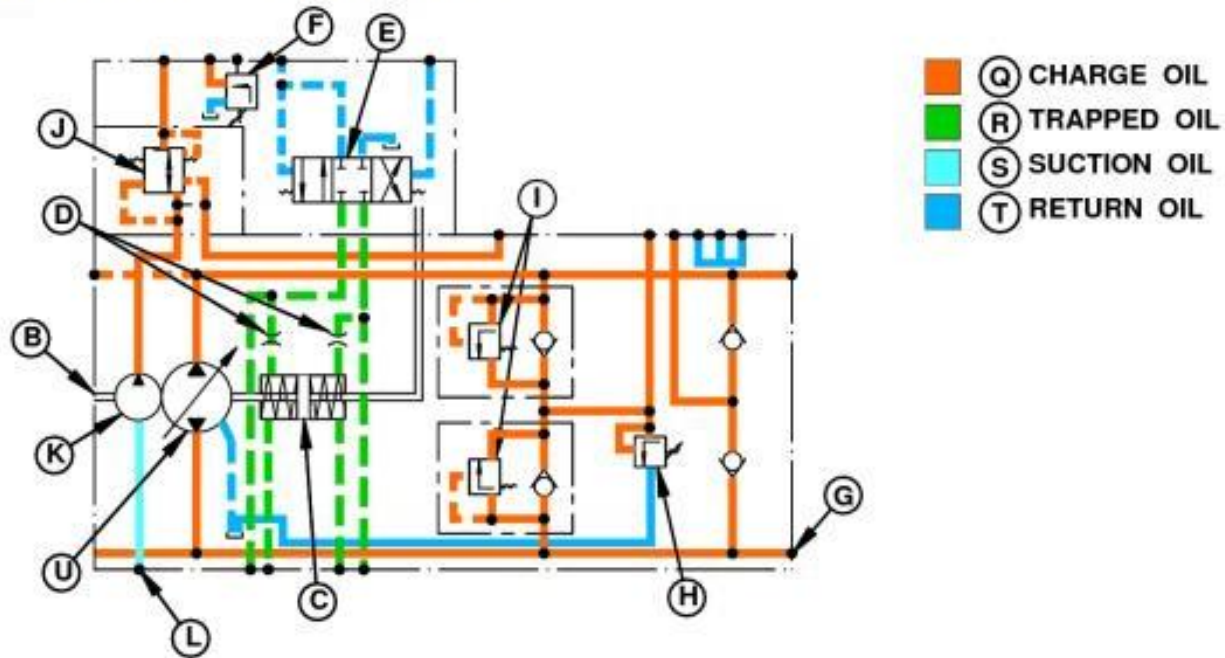
In this manual you will find detailed specifications, illustrations, schematics, diagrams and step-by-step procedures to properly service and diagnose the machine to the manufacturer's standards.

Contents:

- General Information
- Specifications
- Serial Number Location
- Engine Specifications
- Engine Diagnostics
- Engine Tests and Adjustments
- Engine Repair
- Power Train
- Transmission
- Axles
- Differential
- PTO
- Hydraulic System
- Electrical System
- Electrical Tests and Diagnostics
- Wiring Diagram / Schematic
- Ignition and Charging
- Steering
- Brakes
- Wheels
- Operator's Platform
- Body Panels
- Disassembly and Assembly
- Diagnostics, Tests and Adjustments
- Troubleshooting
- and much more...

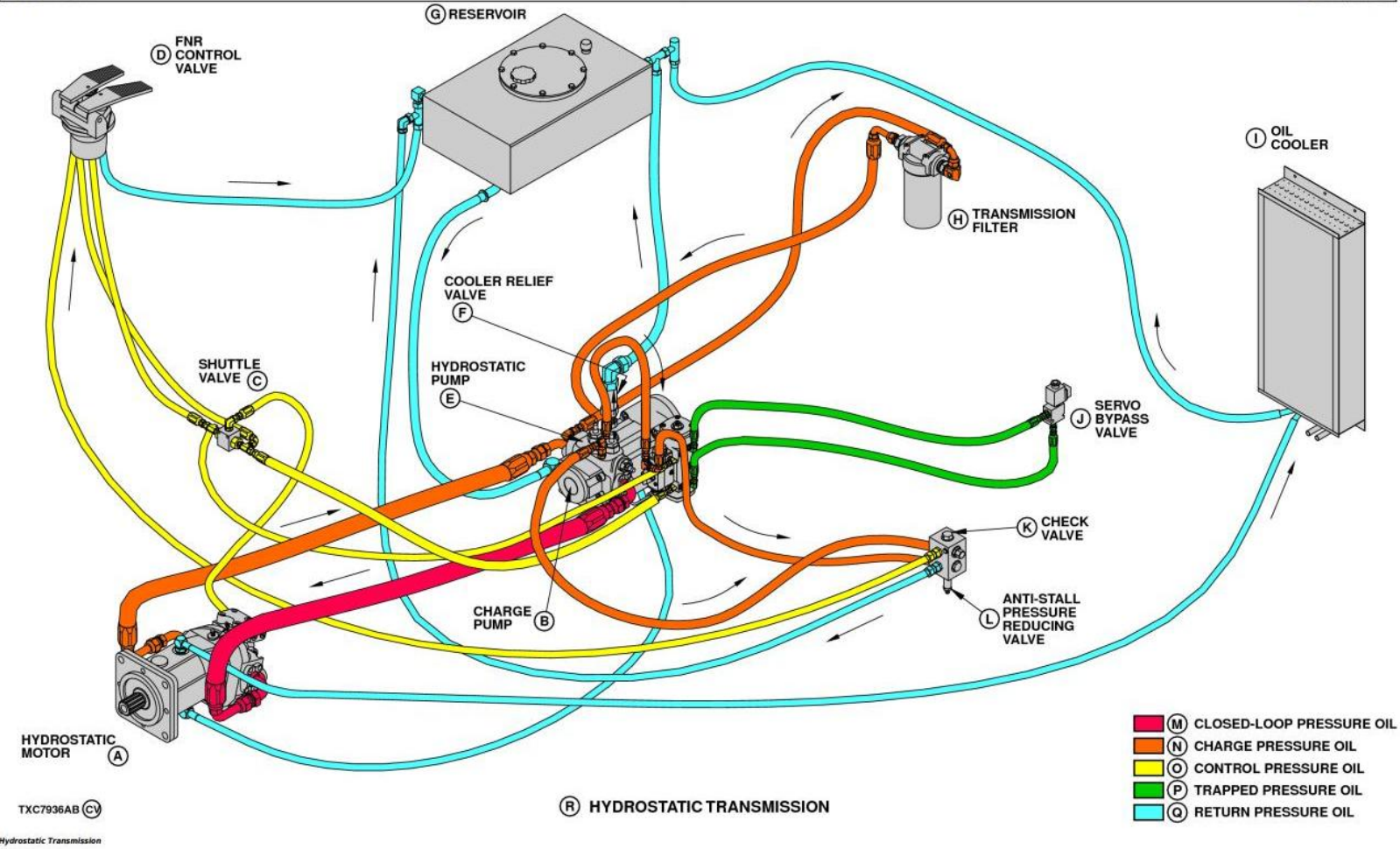
Please note this manual is in **downloadable PDF format only**. If you have any questions about this product or would like to request sample pages, please contact us and reference the product name or SKU.

Hydrostatic Pump Operation



Transmission Pump

The hydrostatic pump (U) in the 643D is similar in design to the pump used on the 643. It is manufactured by the same company, but is a larger capacity pump and the operation of some of the components is different. The pump is a swashplate design, variable displacement axial piston pump. It mounts to the pump drive gearbox and is driven at engine speed.





Thank you very much
for your reading.
Please click here
to get more information.