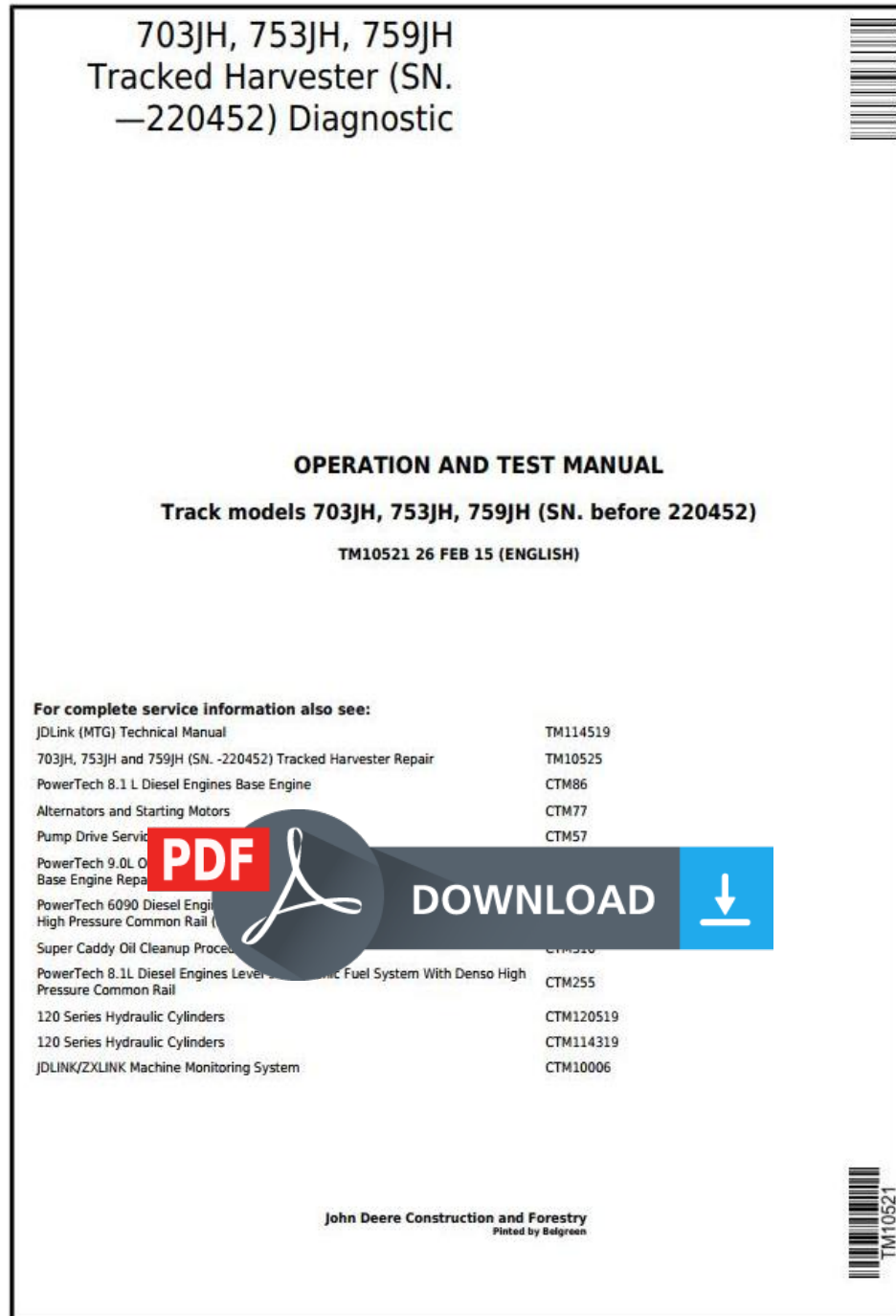


# John Deere 703JH, 753JH, 759JH (SN. ◆◆◆◆◆◆◆◆◆◆◆◆◆◆◆◆ 220452) Track Harvester Diagnostic&Test Service Manual (TM10521)

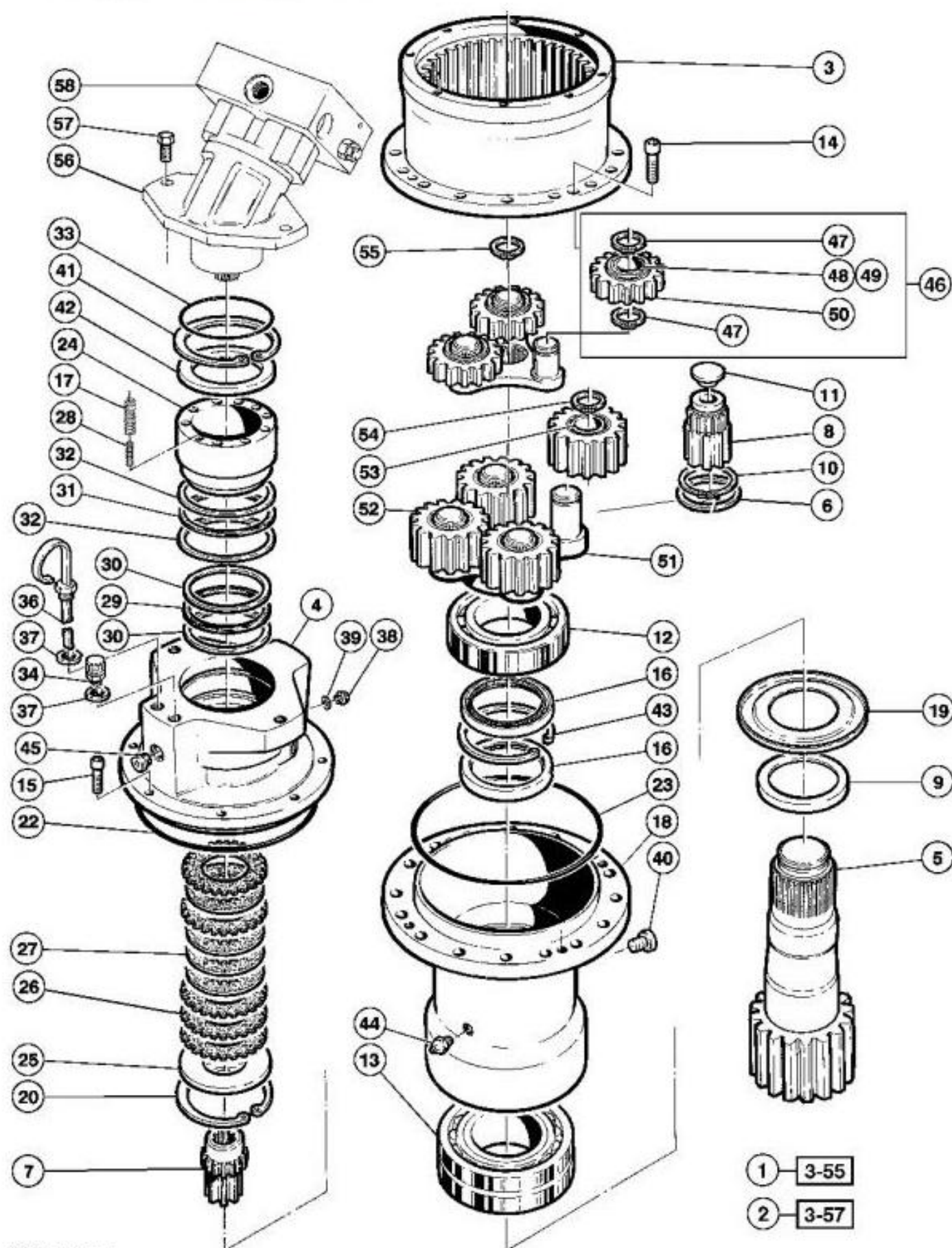


**Covers:** 753JH,759JH,703JH

- General Information
- Specifications
- Serial Number Location
- Engine Specifications
- Engine Diagnostics
- Engine Tests and Adjustments
- Engine Repair
- Power Train
- Transmission
- Axles
- Differential
- PTO
- Hydraulic System
- Electrical System
- Electrical Tests and Diagnostics
- Wiring Diagram / Schematic
- Ignition and Charging
- Steering
- Brakes
- Wheels
- Operator's Platform
- Body Panels
- Disassembly and Assembly
- Diagnostics, Tests and Adjustments
- Troubleshooting
- and much more...

Please note this manual is in **downloadable PDF format only**. If you have any questions about this product or would like to request sample pages, please contact us and reference the product name or SKU.

# Swing Gearbox Operation



TX1014876

Swing Drive Gear Box Components



## Radiator Remove and Install

### Specifications

SPECIFICATIONS	
Radiator Weight (approximate)	34 kg 75 lb.

### Machine Preparation

- Prepare machine for service. [See Park and Prepare for Service Safely](#). (Group 0001.)
- Remove cooling package access doors. [See Cooling Package Access Doors Remove and Install](#). (Group 1910.)



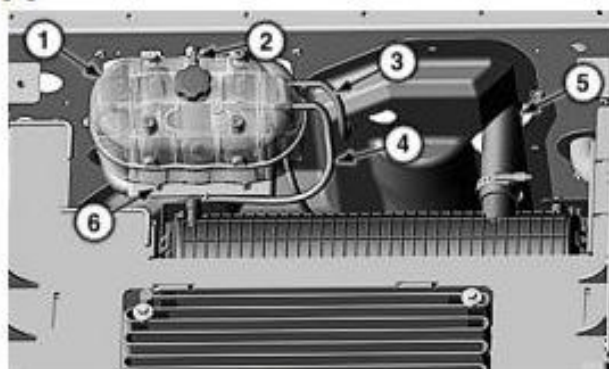
#### CAUTION:

**Prevent possible injury. Explosive release of fluids from pressurized cooling system can cause serious burns. Shut off engine. Remove filler cap when cool to touch. Slowly loosen filler cap to relieve pressure, then remove.**

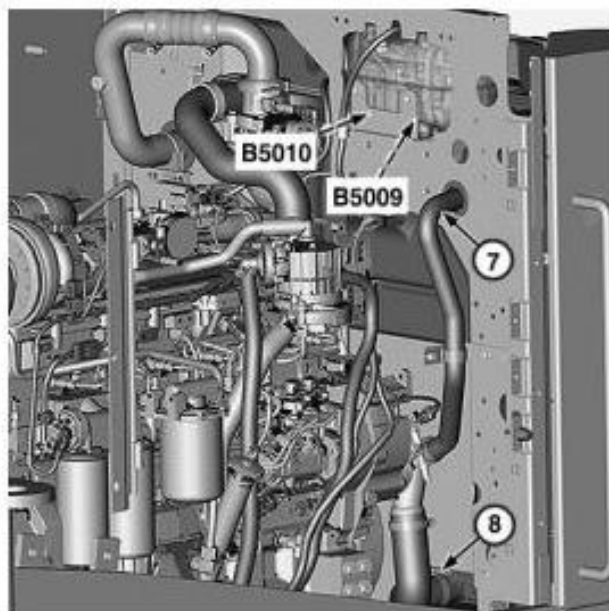
Drain cooling system. [See Drain Cooling System](#). (Operator's Manual.)

### Removal

[1] -



Cooling Package (top side)



Cooling Package (engine side)

Tag and disconnect coolant lines (2—4) and upper radiator hose (5). Close all openings using caps and plugs.

#### LEGEND:

- 1 Surge Tank
- 2 Surge Tank Overflow Line
- 3 Surge Tank-to-Thermostat Housing Line
- 4 Radiator-to-Surge Tank Line
- 5 Upper Radiator Hose
- 6 Cap Screws (4 used)
- 7 Surge Tank-to-Coolant Pump Line
- 8 Lower Radiator Hose
- B5009 Engine Coolant Level Alarm Switch
- B5010 Engine Coolant Level Information Switch



Thank you very much  
for your reading.  
Please click here  
to get more information.