

# John Deere 7200 and 7400 2WD or MFWD Tractors Service Repair Manual (tm1551)

6110R, 6120R,  
6130R, 6135R,  
6145R, 6155R,  
6155RH, 6175R,  
6195R and 6215R



**Covers:** 7200,7400

**Type:** Service Manual

**Language:** English

**Pages:** 933

**Format:** PDF

**Features:** Bookmarked, searchable, printable

**Compatibility:** Windows/Mac/Tablet/Mobile

This service manual contains important information for the maintenance, troubleshooting and servicing of the **John Deere 7200 and 7400 2WD or MFWD Tractors Service Repair Manual (tm1551)**

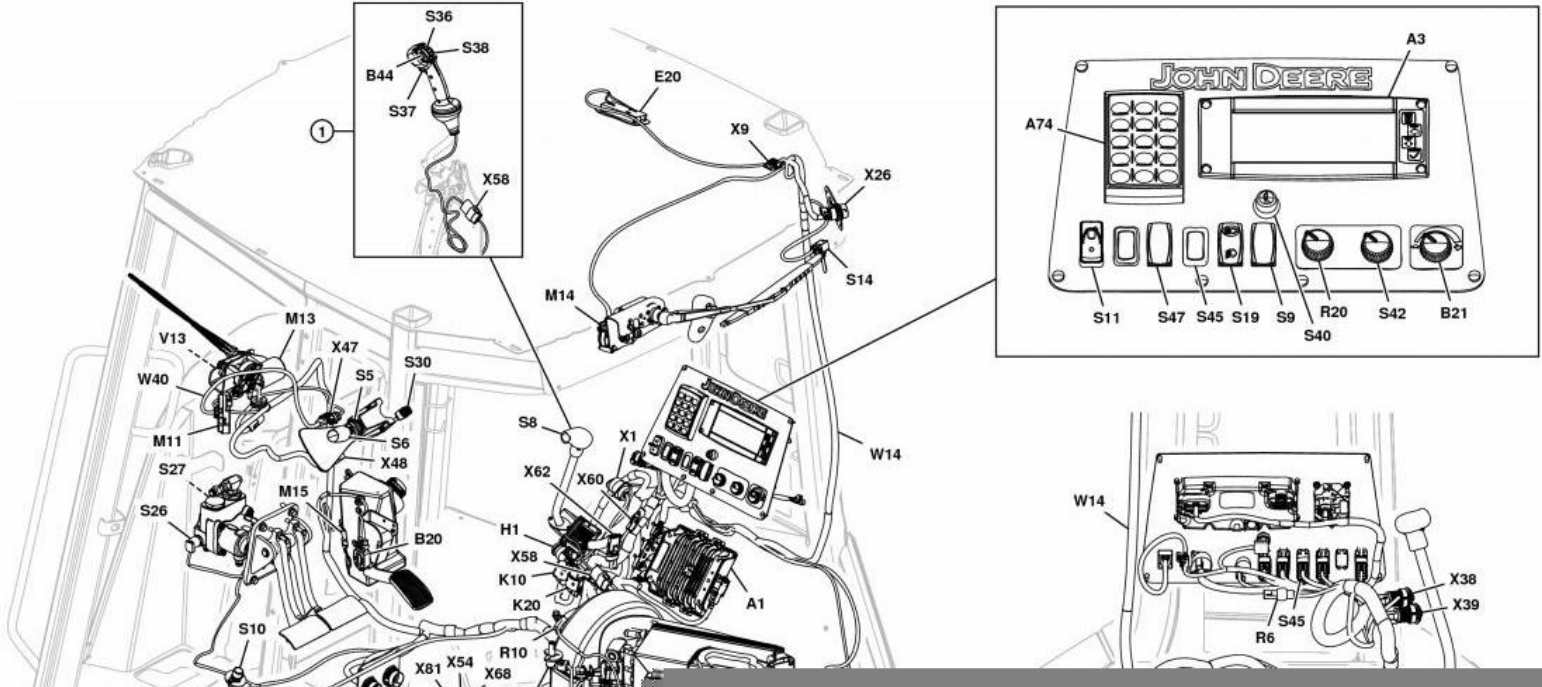
In this manual you will find detailed specifications, illustrations, schematics, diagrams and step-by-step procedures to properly service and diagnose the machine to the manufacturer's standards.

**Contents:**

- General Information
- Specifications
- Serial Number Location
- Engine Specifications
- Engine Diagnostics
- Engine Tests and Adjustments
- Engine Repair
- Power Train
- Transmission
- Axles
- Differential
- PTO
- Hydraulic System
- Electrical System
- Electrical Tests and Diagnostics
- Wiring Diagram / Schematic
- Ignition and Charging
- Steering
- Brakes
- Wheels
- Operator's Platform
- Body Panels
- Disassembly and Assembly
- Diagnostics, Tests and Adjustments
- Troubleshooting
- and much more...

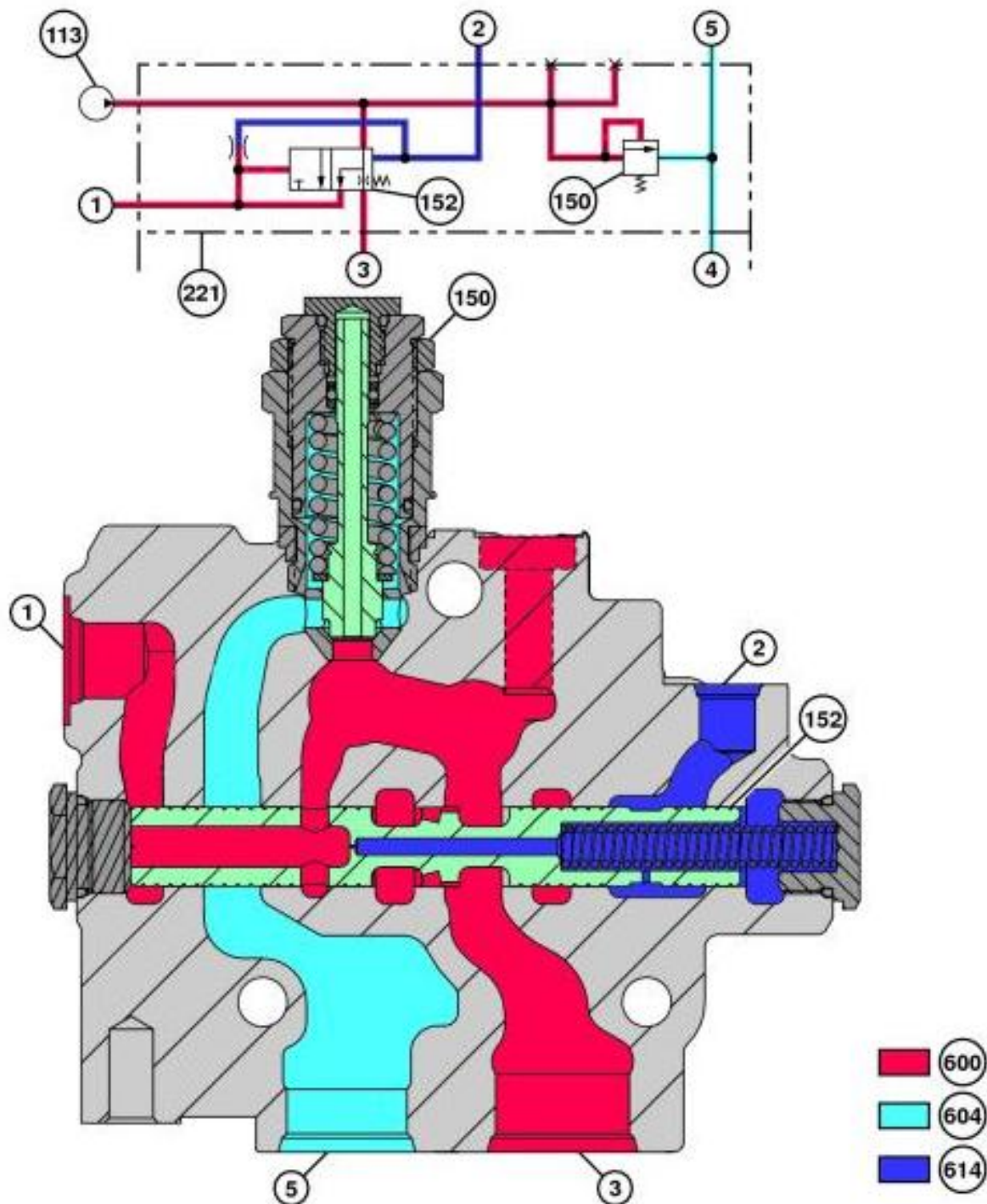
Please note this manual is in **downloadable PDF format only**. If you have any questions about this product or would like to request sample pages, please contact us and reference the product name or SKU.

Cab Harness (W14) Component Location



# Backhoe Control Valve Operation

## Inlet Section



TX1101399

### Backhoe Control Valve Inlet Section

#### LEGEND:

1	To Steering Valve
2	From Steering Valve
3	To Backhoe Control Valve Sections
4	From Backhoe Control Valve Sections
5	To Hydraulic Oil Filter
113	Hydraulic Pump
150	System Relief Valve
152	Priority Spool
221	Inlet Section
600	High-Pressure Oil
604	Return Oil



Thank you very much  
for your reading.  
Please click here  
to get more information.