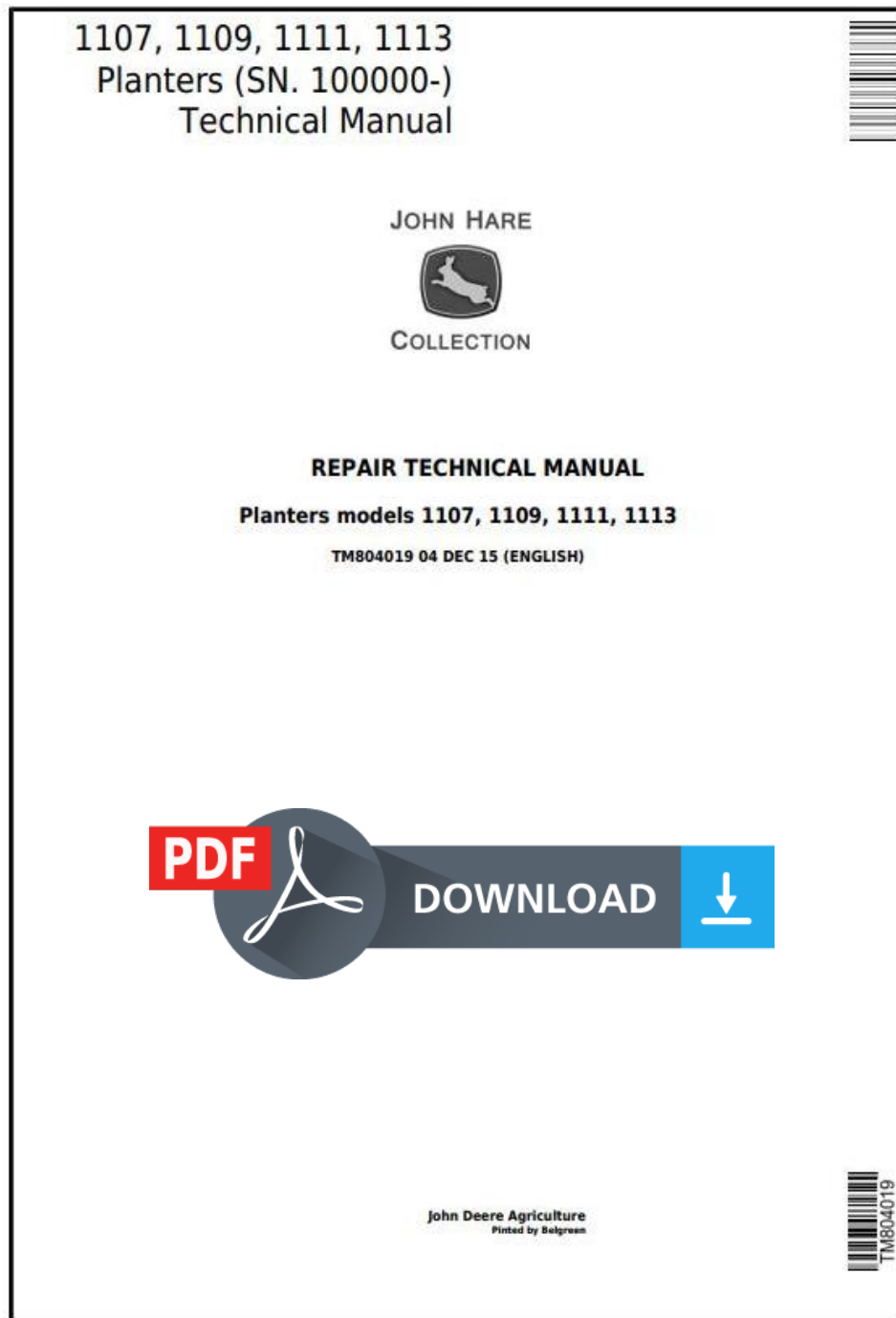


# John Deere 740A and 750A Drills (European Version) Diagnostic & Repair Technical Manual (TM4590)



**Covers:** 740A,750A

**Type:** Service Manual

**Language:** English

**Pages:** 300

**Format:** PDF

**Features:** Bookmarked, searchable, printable

**Compatibility:** Windows/Mac/Tablet/Mobile

This service manual contains important information for the maintenance, troubleshooting and servicing of the **John Deere 740A and 750A Drills (European Version) Diagnostic & Repair Technical Manual (TM4590)**

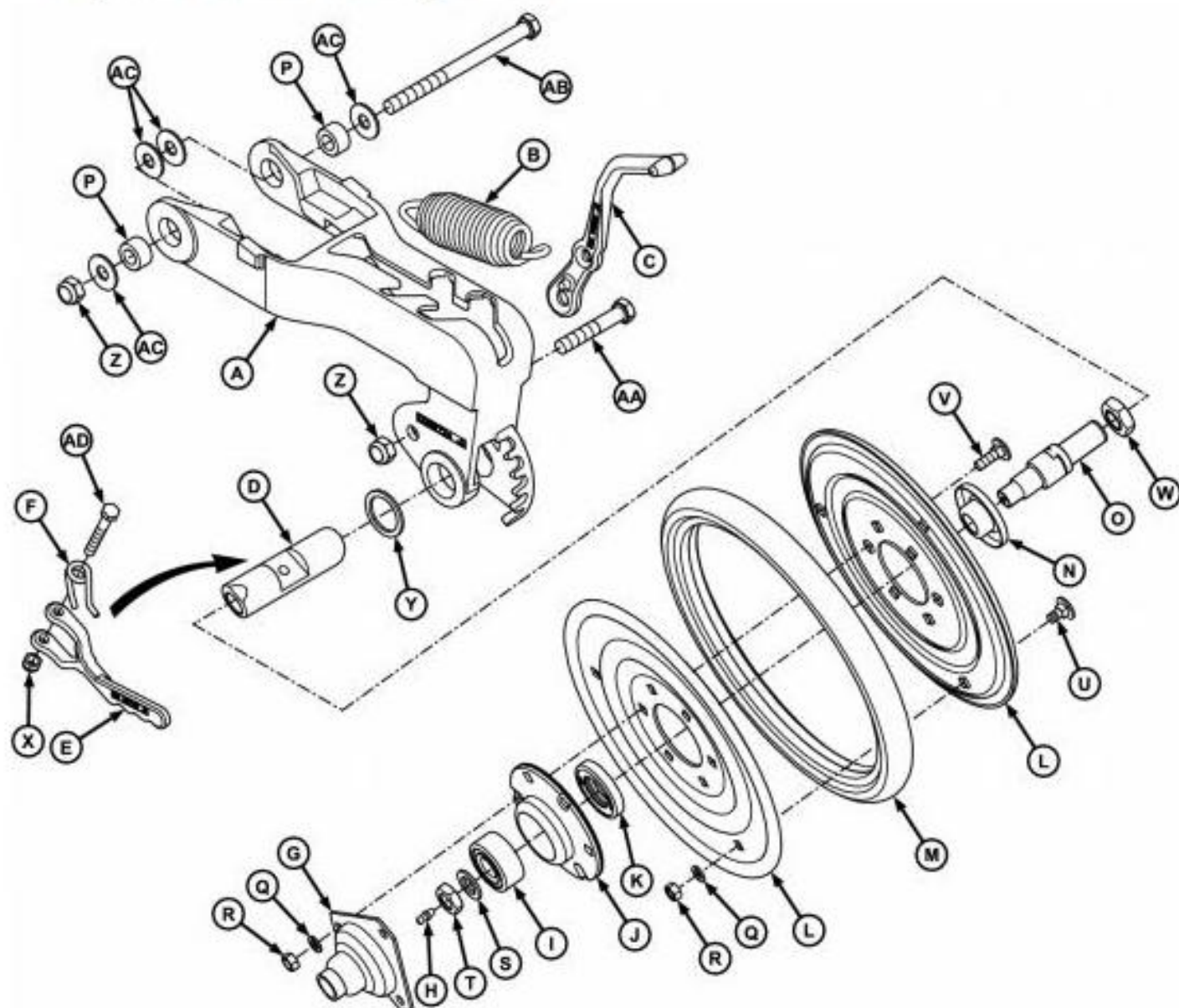
In this manual you will find detailed specifications, illustrations, schematics, diagrams and step-by-step procedures to properly service and diagnose the machine to the manufacturer's standards.

**Contents:**

- General Information
- Specifications
- Serial Number Location
- Engine Specifications
- Engine Diagnostics
- Engine Tests and Adjustments
- Engine Repair
- Power Train
- Transmission
- Axles
- Differential
- PTO
- Hydraulic System
- Electrical System
- Electrical Tests and Diagnostics
- Wiring Diagram / Schematic
- Ignition and Charging
- Steering
- Brakes
- Wheels
- Operator's Platform
- Body Panels
- Disassembly and Assembly
- Diagnostics, Tests and Adjustments
- Troubleshooting
- and much more...

Please note this manual is in **downloadable PDF format only**. If you have any questions about this product or would like to request sample pages, please contact us and reference the product name or SKU.

## Exploded View of Closing Wheel



### Closing Wheel

#### LEGEND:

A	Handle
B	Support Bracket
C	Handle
D	Support
E	Bolt
F	Bushing
G	Washer
H	Pin
I	Spring
J	Pin
K	Nut
L	Wheel Axle
M	Bolt
N	Wheel
O	Bushing
P	Spacer
Q	Washer
R	Bearing
S	Nut
T	Hub
U	Nut

## Group 20 - Lift and Row Marker Hydraulic Cylinders

### Removing and Installing Lift Cylinder

#### →NOTE:

Before starting any maintenance work, see Parking Planter Safely in General Information Section to properly park planter reducing the risk of accidents.

#### Removing

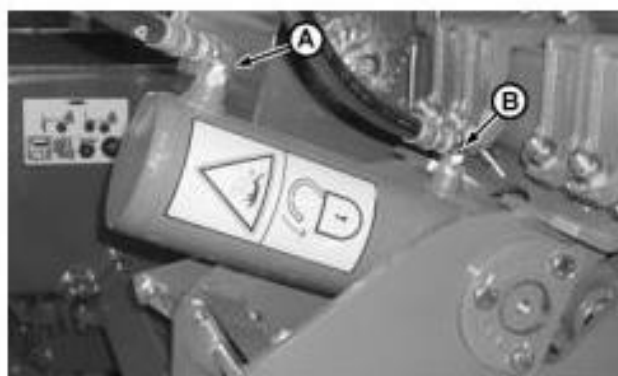
##### [1] -

#### IMPORTANT:

*This procedure must be carried out with planter totally lowered.*

#### IMPORTANT:

*Make sure there is no hydraulic pressure in the system. (Consult procedure Pressure Relief of Hydraulic Lines, in Section 270).*



#### LEGEND:

A Hydraulic Hose  
B Hydraulic Hose

#### Lift Cylinder

Disconnect hydraulic hoses (A) and (B).

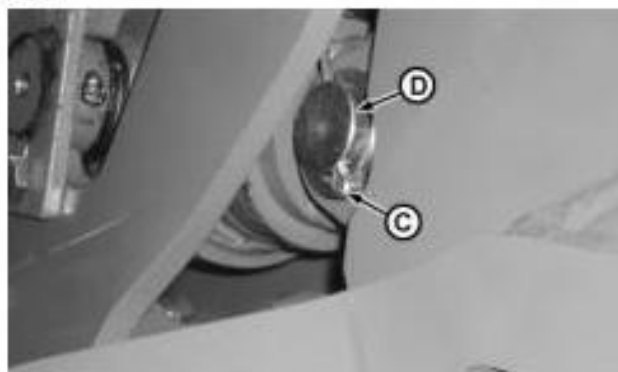
#### →NOTE:

Positions of hoses (A) and (B) may vary along cylinder liners, according to lift cylinder type.

#### IMPORTANT:

*Close hydraulic cylinder bores with plugs.*

##### [2] -



#### LEGEND:

C Cotter Pin  
D Pin

#### Pin

Remove cotter pin (C) to remove pin (D).

##### [3] -



Thank you very much  
for your reading.  
Please click here  
to get more information.