

# John Deere 753J, 759J (SN. -220452) Tracked Feller Buncher Service Repair Technical Manual (TM10511)

325SL Backhoe Loader  
Diagnostic




**OPERATION AND TEST MANUAL**

**Backhoe Loaders models 325SL (PIN: 1T0325SL\*\*C273920-)**


**TM13307X19 16 FEB 16 (ENGLISH)**

For complete service information also see:

325SL Backhoe Loader Repair	TM13308X19
JDLINK (MTG) Technical Manual	TM114519
PowerTech 4.5L & 6.8L Diesel Engines Level 12 Electronic Fuel System With Stanadyne DE10 Pump	CTM331
120 Series Hydraulic Cylinders	CTM120519
PowerTech 4.5L Diesel Engines Tier 1/Stage I, Tier 2/Stage II, Tier 3/Stage IIIA	CTM104

**PDF**  **DOWNLOAD** 

John Deere Construction and Forestry  
Printed by Belgreen



TM13307X19

**Covers:** 753J,220452),759J,220452)

**Type:** Service Manual

**Language:** English

**Pages:** 408

**Format:** PDF

**Features:** Bookmarked, searchable, printable

**Compatibility:** Windows/Mac/Tablet/Mobile

This service manual contains important information for the maintenance, troubleshooting and servicing of the **John Deere 753J, 759J (SN. -220452) Tracked Feller Buncher Service Repair Technical Manual (TM10511)**

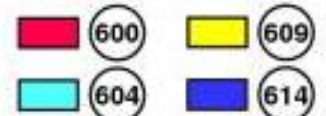
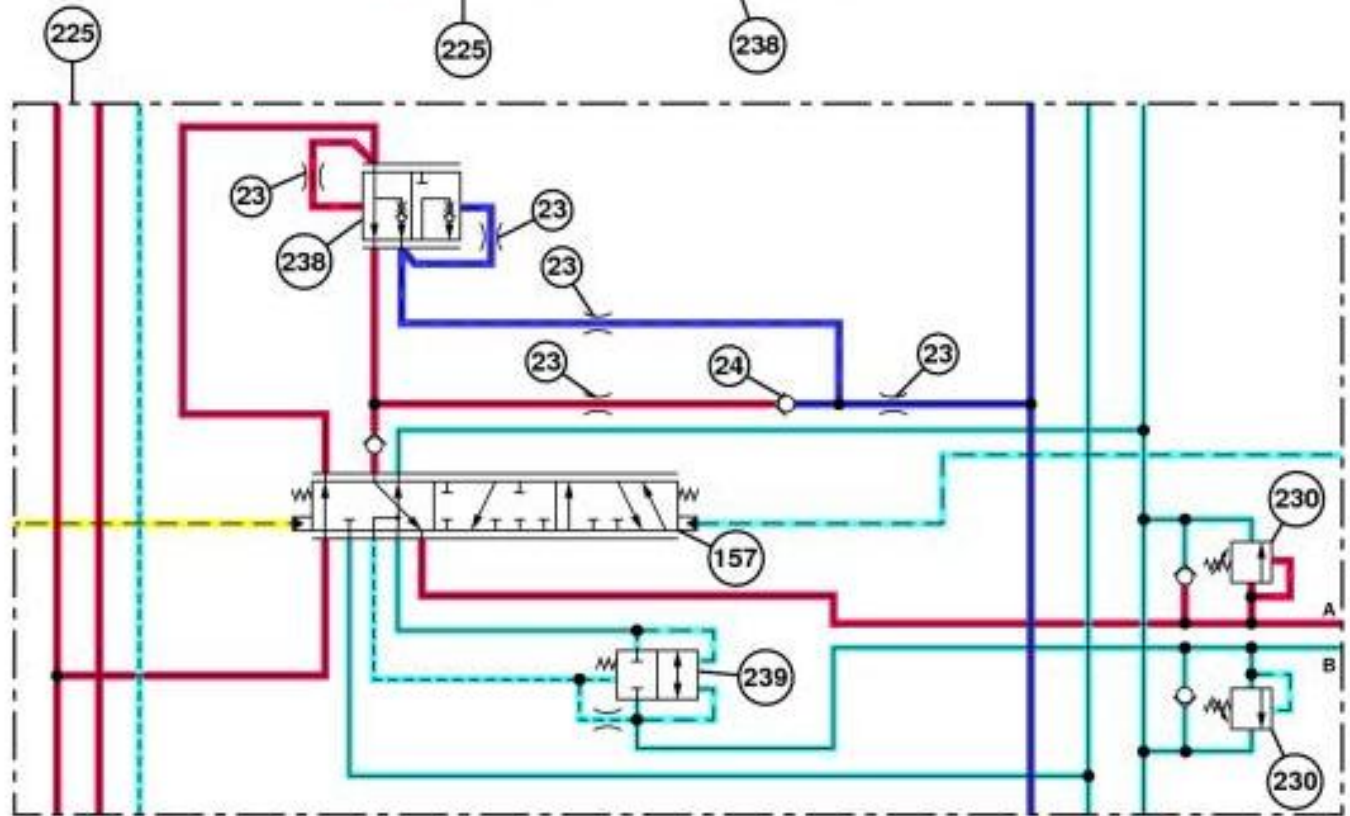
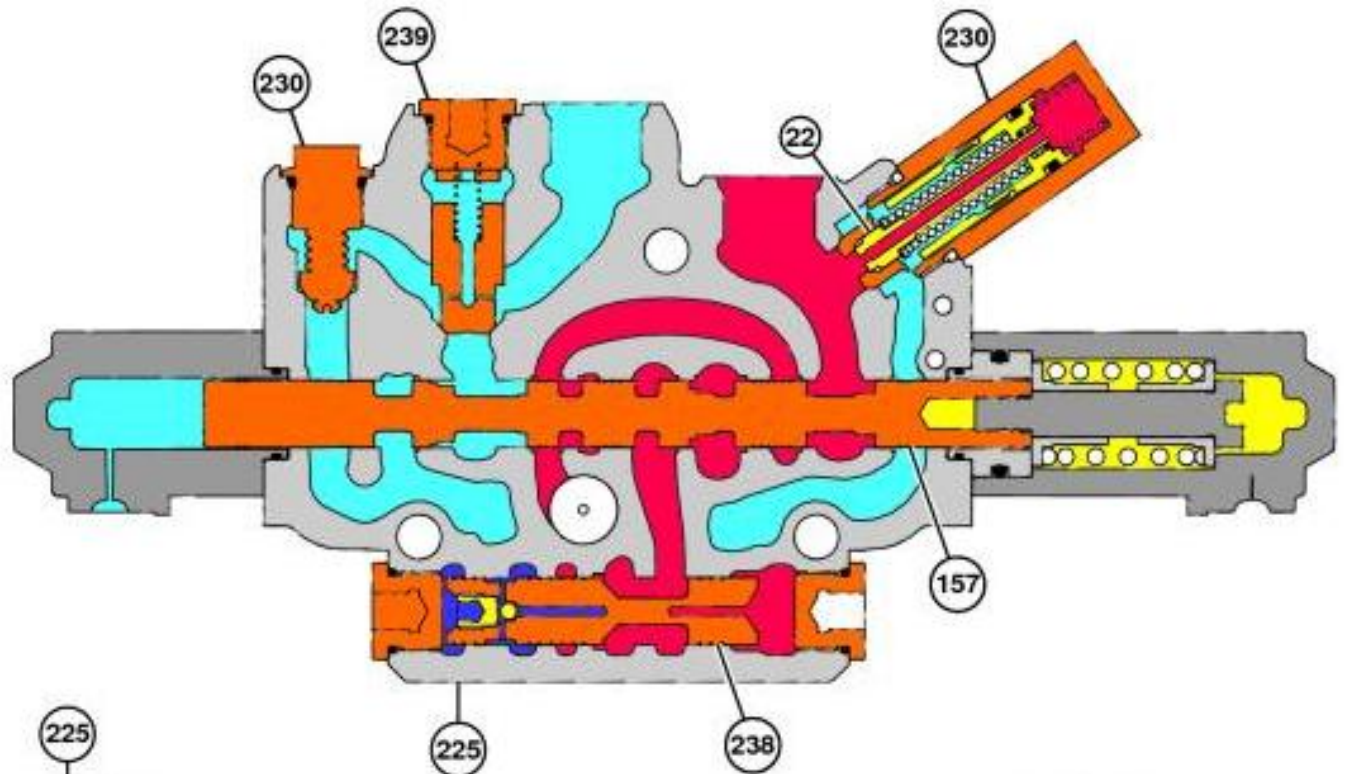
In this manual you will find detailed specifications, illustrations, schematics, diagrams and step-by-step procedures to properly service and diagnose the machine to the manufacturer's standards.

**Contents:**

- General Information
- Specifications
- Serial Number Location
- Engine Specifications
- Engine Diagnostics
- Engine Tests and Adjustments
- Engine Repair
- Power Train
- Transmission
- Axles
- Differential
- PTO
- Hydraulic System
- Electrical System
- Electrical Tests and Diagnostics
- Wiring Diagram / Schematic
- Ignition and Charging
- Steering
- Brakes
- Wheels
- Operator's Platform
- Body Panels
- Disassembly and Assembly
- Diagnostics, Tests and Adjustments
- Troubleshooting
- and much more...

Please note this manual is in **downloadable PDF format only**. If you have any questions about this product or would like to request sample pages, please contact us and reference the product name or SKU.





TX1186149

**Boom Valve Section Shown (activated state shown)**

**LEGEND:**

- 22 Relief Poppet
- 23 Orifice (5 used)
- 24 Load Check
- 157 Backhoe Boom Spool
- 225 Boom Valve Section
- 230 Boom Circuit Relief Valve (with anticavitation) (2 used)



Thank you very much  
for your reading.  
Please click here  
to get more information.