

John Deere 762B (SN.-791763), 862B (SN.-793082) Scraper Service Repair Technical Manual (tm1490)



Covers: 762B,(SN.-791763),862B,(SN.-793082)

Type: Service Manual

Language: English

Pages: 769

Format: PDF

Features: Bookmarked, searchable, printable

Compatibility: Windows/Mac/Tablet/Mobile

This service manual contains important information for the maintenance, troubleshooting and servicing of the **John Deere 762B (SN.-791763), 862B (SN.-793082) Scraper Service Repair Technical Manual (tm1490)**

In this manual you will find detailed specifications, illustrations, schematics, diagrams and step-by-step procedures to properly service and diagnose the machine to the manufacturer's standards.

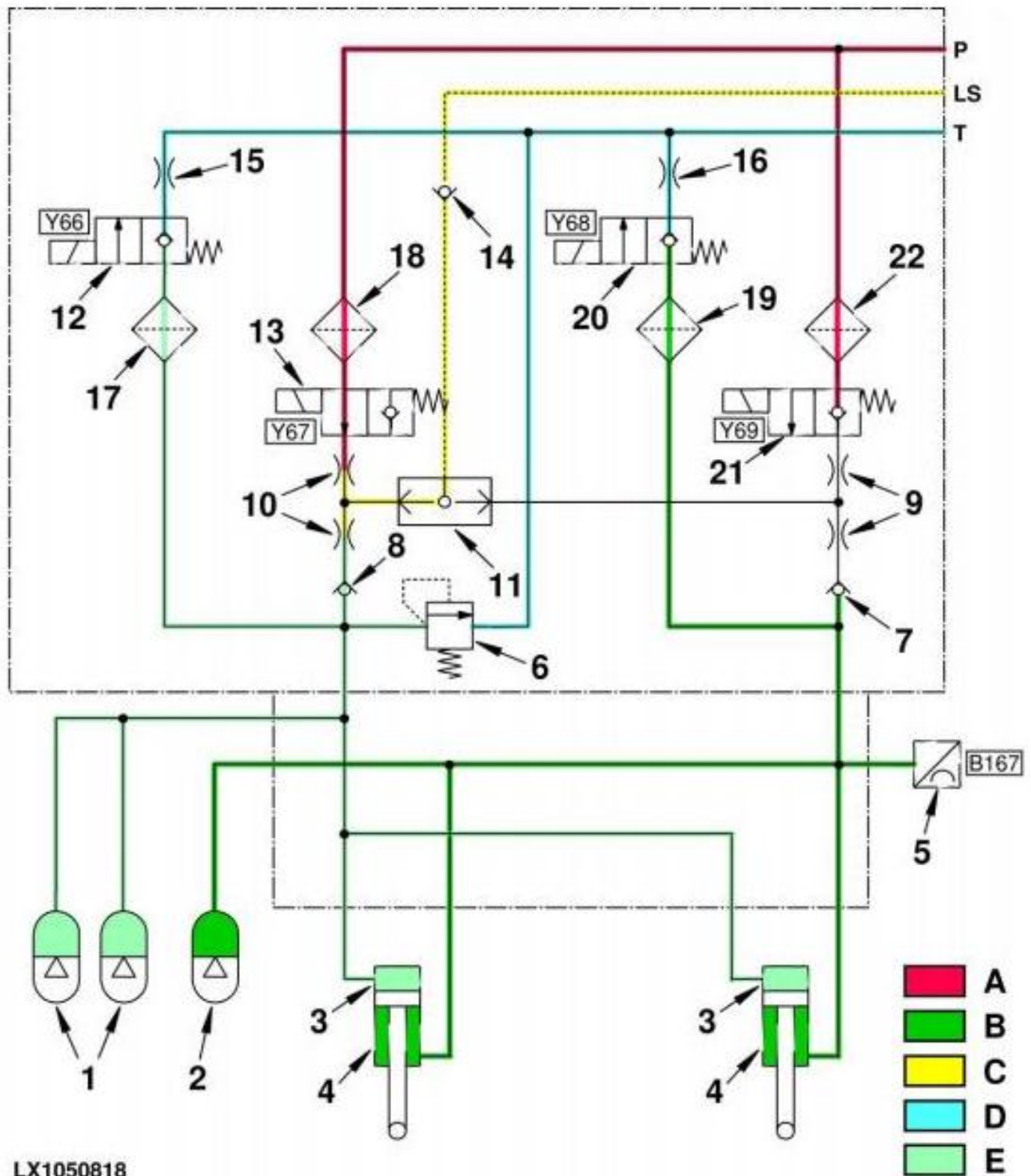
Contents:

- General Information
- Specifications
- Serial Number Location
- Engine Specifications
- Engine Diagnostics
- Engine Tests and Adjustments
- Engine Repair
- Power Train
- Transmission
- Axles
- Differential
- PTO
- Hydraulic System
- Electrical System
- Electrical Tests and Diagnostics
- Wiring Diagram / Schematic
- Ignition and Charging
- Steering
- Brakes
- Wheels
- Operator's Platform
- Body Panels
- Disassembly and Assembly
- Diagnostics, Tests and Adjustments
- Troubleshooting
- and much more...

Please note this manual is in **downloadable PDF format only**. If you have any questions about this product or would like to request sample pages, please contact us and reference the product name or SKU.

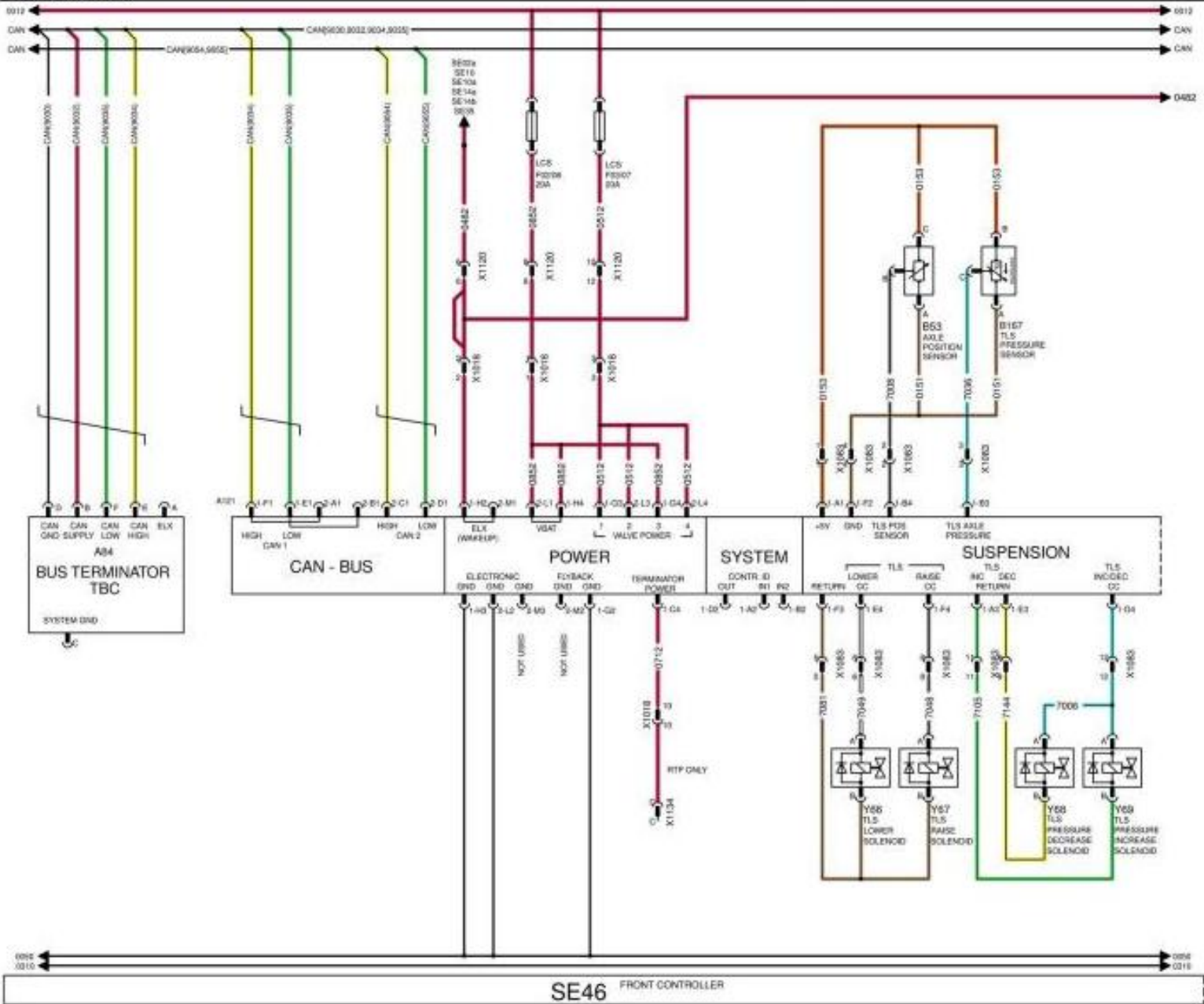
Suspended Front-Wheel Drive Axle - Hydraulic Diagram (Raise) (6170R - 6210R Tractors)

If load is applied at the front end of the tractor, the piston rods of the hydraulic cylinders retract. The suspended front-wheel drive axle position sensor detects the position and transmits this information to the SFA control software which activates level control raise solenoid valve (13).



LX1050818

Hydraulic Diagram of Level Control Raise with Suspended Front-Wheel Drive Axle



LX1050192

SE46/1 - Front Chassis Control Unit, Diagnostic Schematic



Thank you very much
for your reading.
Please click here
to get more information.