

John Deere 870G, 870GP, 872G, 872GP (SN.-634753) Motor Grader Diagnostic&Test Service Manual (TM11208)



Covers: 634753),870G,870GP,872G,872GP

Type: Service Manual

Language: English

Pages: 1630

Format: PDF

Features: Bookmarked, searchable, printable

Compatibility: Windows/Mac/Tablet/Mobile

This service manual contains important information for the maintenance, troubleshooting and servicing of the **John Deere 870G, 870GP, 872G, 872GP (SN.-634753) Motor Grader Diagnostic&Test Service Manual (TM11208)**

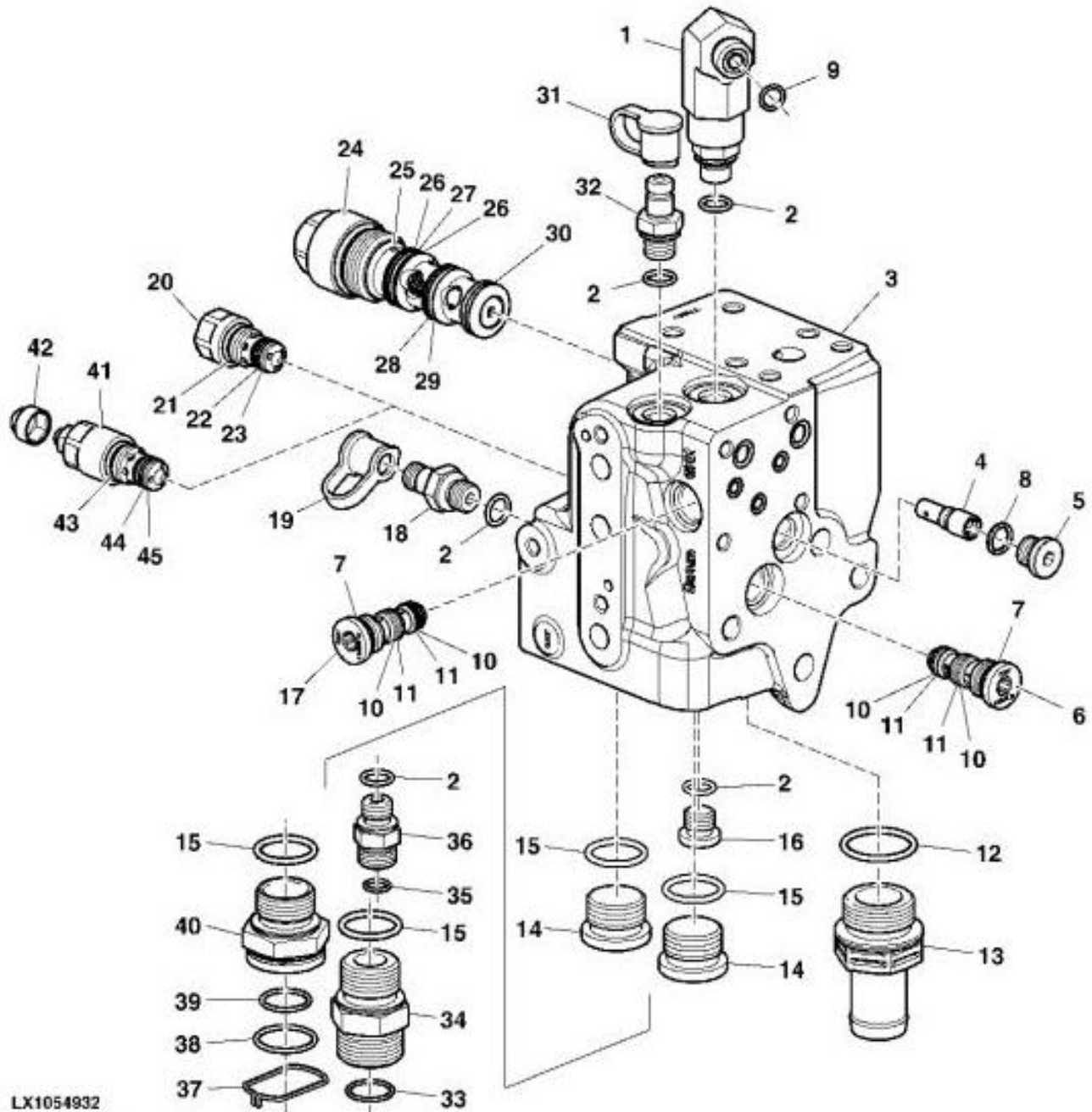
In this manual you will find detailed specifications, illustrations, schematics, diagrams and step-by-step procedures to properly service and diagnose the machine to the manufacturer's standards.

Contents:

- General Information
- Specifications
- Serial Number Location
- Engine Specifications
- Engine Diagnostics
- Engine Tests and Adjustments
- Engine Repair
- Power Train
- Transmission
- Axles
- Differential
- PTO
- Hydraulic System
- Electrical System
- Electrical Tests and Diagnostics
- Wiring Diagram / Schematic
- Ignition and Charging
- Steering
- Brakes
- Wheels
- Operator's Platform
- Body Panels
- Disassembly and Assembly
- Diagnostics, Tests and Adjustments
- Troubleshooting
- and much more...

Please note this manual is in **downloadable PDF format only**. If you have any questions about this product or would like to request sample pages, please contact us and reference the product name or SKU.

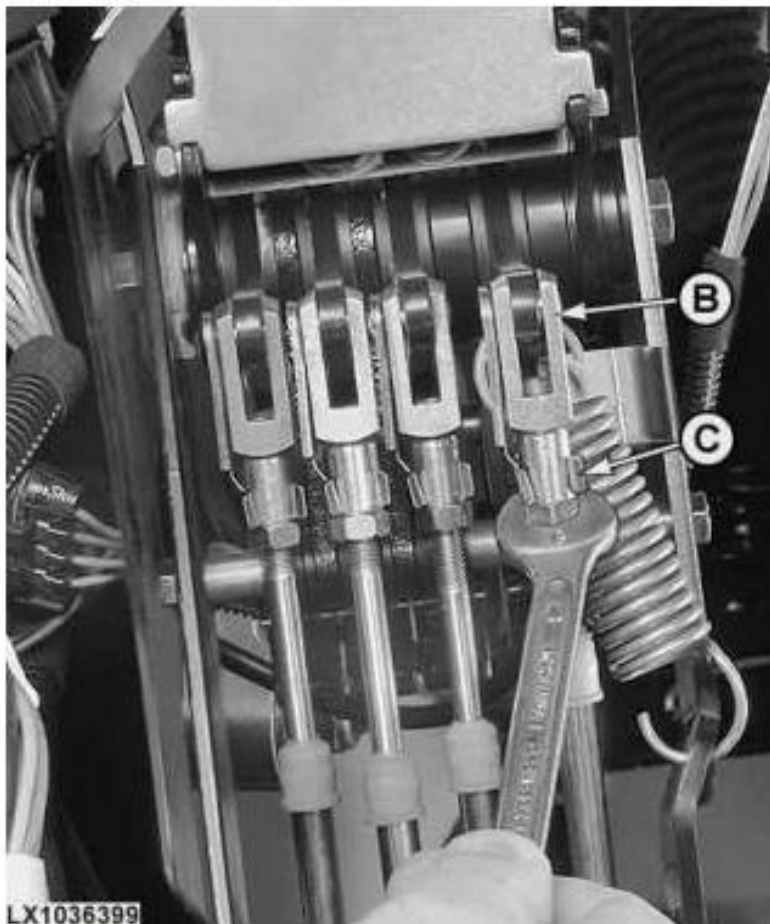
Reconditioning the Priority 3 Control Block



LX1054932

LEGEND:

- | | |
|----|---|
| 1 | Fitting (LS oil pressure to hydraulic pump) |
| 2 | O-ring |
| 3 | Housing |
| 4 | Flow control valve (LS relief to reservoir) |
| 5 | Plug |
| 6 | Shuttle valve (LS pressure, priority circuit 1/2 - 3) |
| 7 | Seal ring |
| 8 | Seal ring |
| 9 | O-ring |
| 10 | Back-up ring |
| 11 | Seal ring |

**LEGEND:**

- | | |
|---|-------------------|
| A | Range shift lever |
| B | Bowden cable |
| C | Retaining clip |

Move the range shift lever (A) to neutral position. From there, the shift lever automatically moves to the shift position C-D.

[2] - Disengage the Bowden cable (B) of the park lock.

→NOTE:

Loosen the lock nut on the yoke before disengaging the Bowden cable.



Thank you very much
for your reading.
Please click here
to get more information.