



John Deere 909M, 959M (SN.271505-) Track Feller Buncher Diagnostic & Test Service Manual (TM13233X19)

643D Feller-Buncher
Repair


REPAIR TECHNICAL MANUAL
Wheeled models 643D
TM1482 22 FEB 05 (ENGLISH)

For complete service information also see:

643D Feller-Buncher Diagnostic	TM1481
Series 300, 3029, 4039, 4045, 6059 and 6068 Diesel Engines	CTM8
Alternators and Starting Motors	CTM77
Pump Drive Service Manual	CTM57

PDF  **DOWNLOAD** 

John Deere Construction and Forestry
Printed by Belgreen



Covers: 909M,1T0909MX**C271505;1T0909MX*

Type: Service Manual

Language: English

Pages: 1051

Format: PDF

Features: Bookmarked, searchable, printable

Compatibility: Windows/Mac/Tablet/Mobile

This service manual contains important information for the maintenance, troubleshooting and servicing of the **John Deere 909M, 959M (SN.271505-) Track Feller Buncher Diagnostic & Test Service Manual (TM13233X19)**

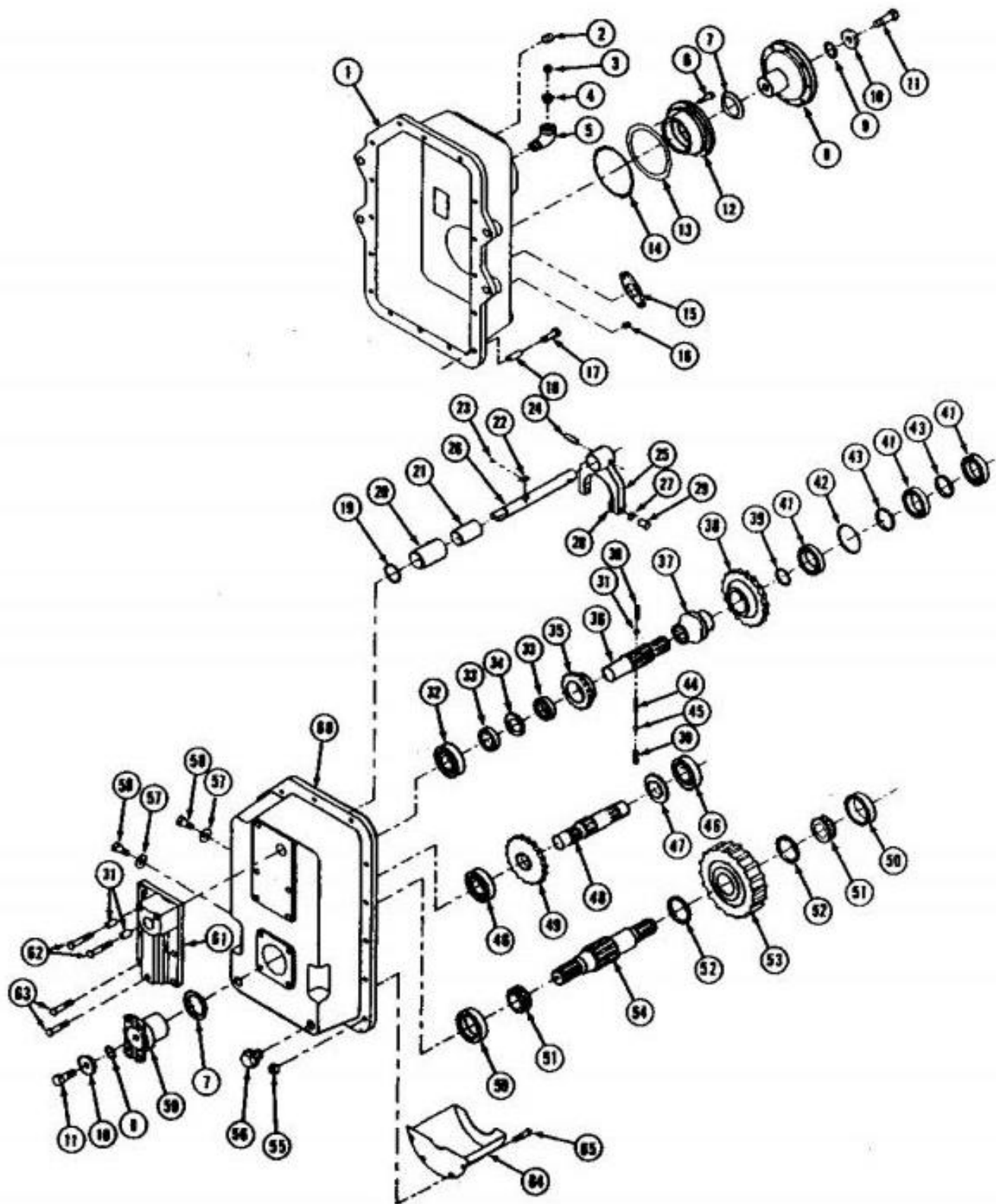
In this manual you will find detailed specifications, illustrations, schematics, diagrams and step-by-step procedures to properly service and diagnose the machine to the manufacturer's standards.

Contents:

- General Information
- Specifications
- Serial Number Location
- Engine Specifications
- Engine Diagnostics
- Engine Tests and Adjustments
- Engine Repair
- Power Train
- Transmission
- Axles
- Differential
- PTO
- Hydraulic System
- Electrical System
- Electrical Tests and Diagnostics
- Wiring Diagram / Schematic
- Ignition and Charging
- Steering
- Brakes
- Wheels
- Operator's Platform
- Body Panels
- Disassembly and Assembly
- Diagnostics, Tests and Adjustments
- Troubleshooting
- and much more...

Please note this manual is in **downloadable PDF format only**. If you have any questions about this product or would like to request sample pages, please contact us and reference the product name or SKU.

Disassemble Two-Speed Gearbox



Two-Speed Gearbox (Serial No. -803614)

LEGEND:

- | | |
|---|--------------|
| 1 | Rear Housing |
| 2 | Pipe Plug |
| 3 | Breather |
| 4 | Pipe Bushing |

Assemble Hydrostatic Motor Rotating Group

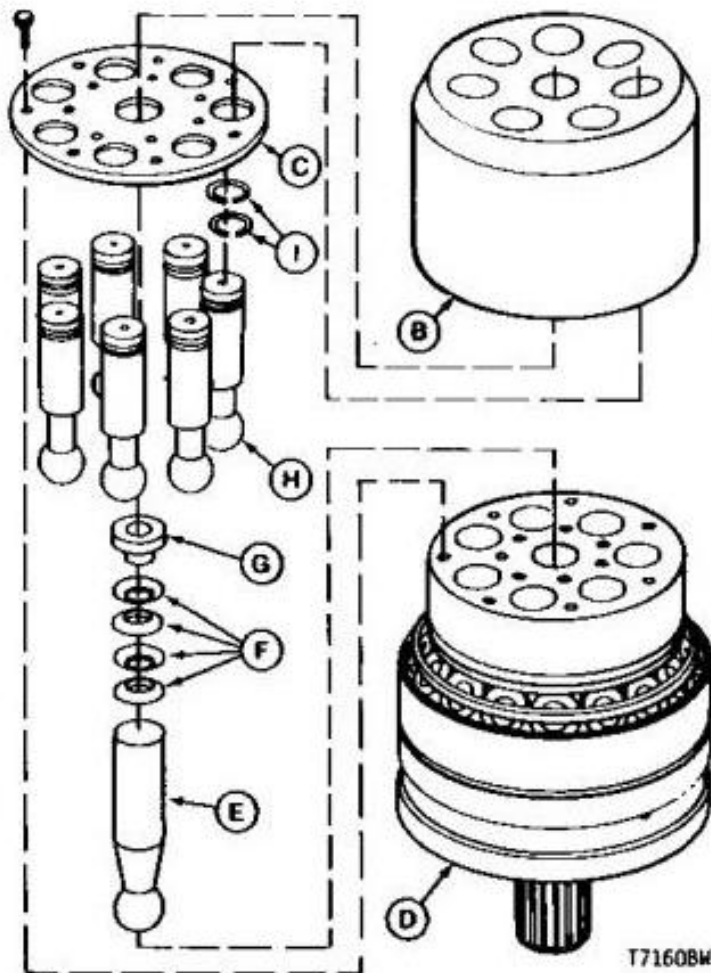
[1] -



Inspect Output Shaft Bearing Assembly

Inspect output shaft bearing assembly (A) for smoothness. Rotate assembly several complete turns. If bearing feels rough the entire rotating group should be replaced as an assembly.

[2] -



Cylinder Block & Output Shaft Assembly

Install piston rings (I) if removed.

[3] - Assemble pistons (H) and guide pin (E) to output shaft (D) and install retainer plate (C). Make sure pistons are placed in the same order as they were, when removed.

[4] - Apply thread lock and sealer (high strength) to screw (A) threads.

[5] - Install spring guide (G) and spring washers (F) into center bore of cylinder block.

[6] - Install cylinder block (B) over pistons and guide pin.

[7] -



Thank you very much
for your reading.
Please click here
to get more information.