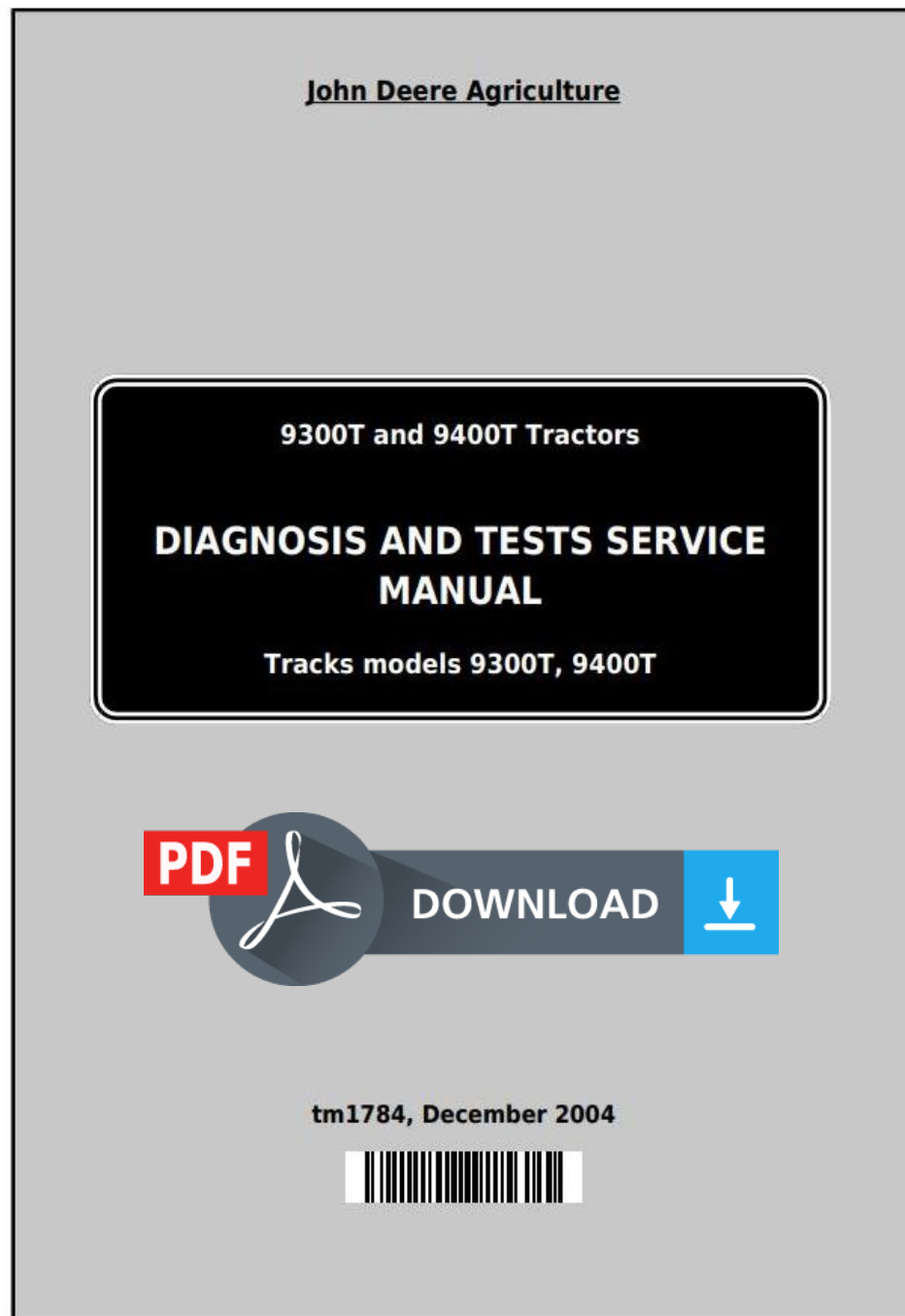


John Deere 9300T and 9400T Tracks Tractors Diagnosis and Tests Service Manual (tm1784)



Covers: 9300T,9400T

Type: Service Manual

Language: English

Pages: 1890

Format: PDF

Features: Bookmarked, searchable, printable

Compatibility: Windows/Mac/Tablet/Mobile

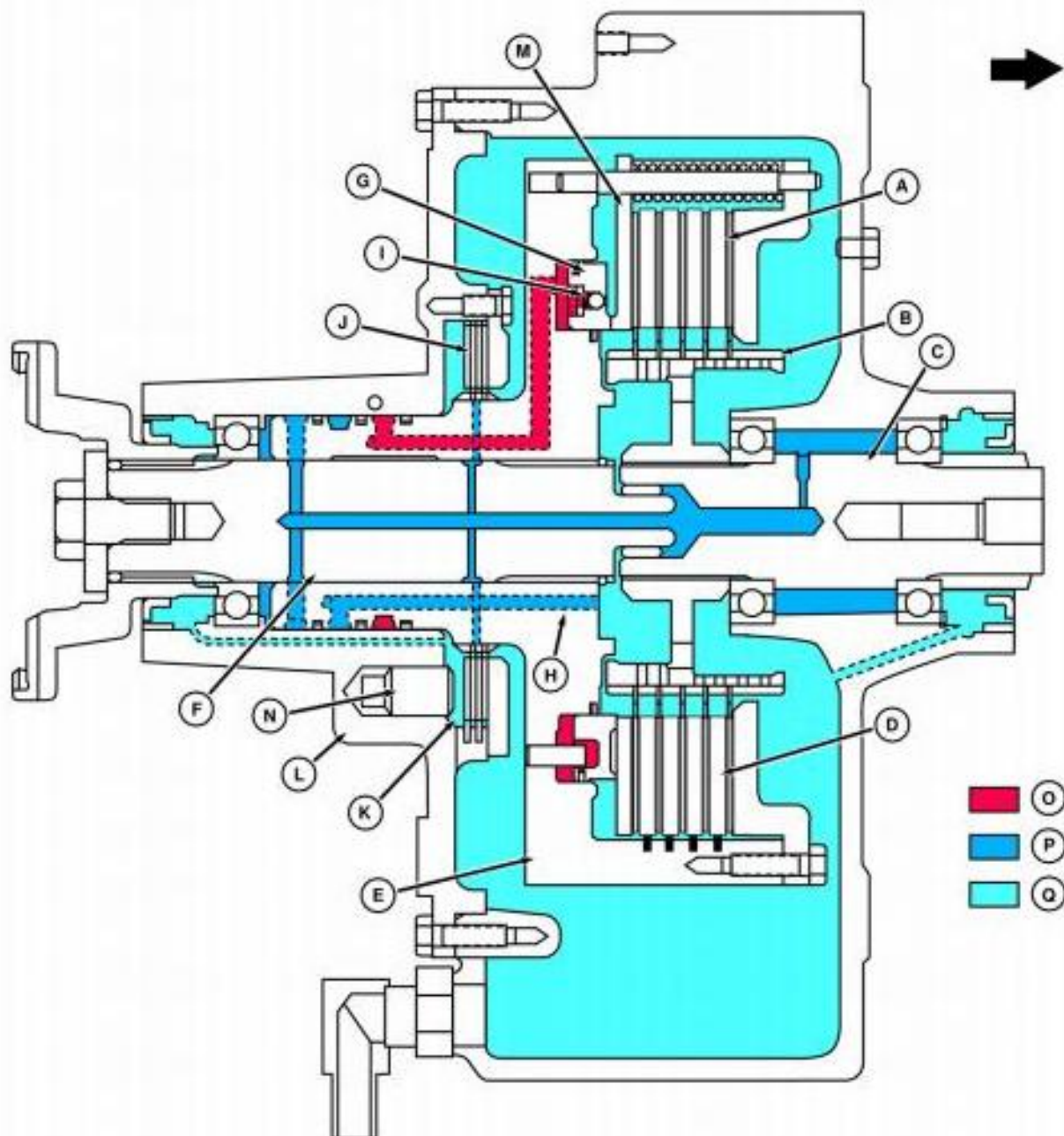
This service manual contains important information for the maintenance, troubleshooting and servicing of the **John Deere 9300T and 9400T Tracks Tractors Diagnosis and Tests Service Manual (tm1784)**

In this manual you will find detailed specifications, illustrations, schematics, diagrams and step-by-step procedures to properly service and diagnose the machine to the manufacturer's standards.

Contents:

- General Information
- Specifications
- Serial Number Location
- Engine Specifications
- Engine Diagnostics
- Engine Tests and Adjustments
- Engine Repair
- Power Train
- Transmission
- Axles
- Differential
- PTO
- Hydraulic System
- Electrical System
- Electrical Tests and Diagnostics
- Wiring Diagram / Schematic
- Ignition and Charging
- Steering
- Brakes
- Wheels
- Operator's Platform
- Body Panels
- Disassembly and Assembly
- Diagnostics, Tests and Adjustments
- Troubleshooting
- and much more...

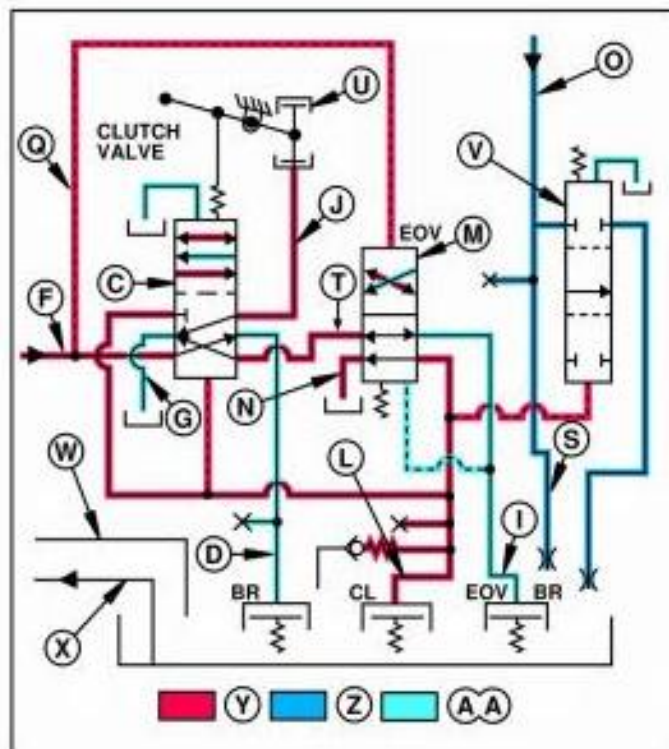
Please note this manual is in **downloadable PDF format only**. If you have any questions about this product or would like to request sample pages, please contact us and reference the product name or SKU.



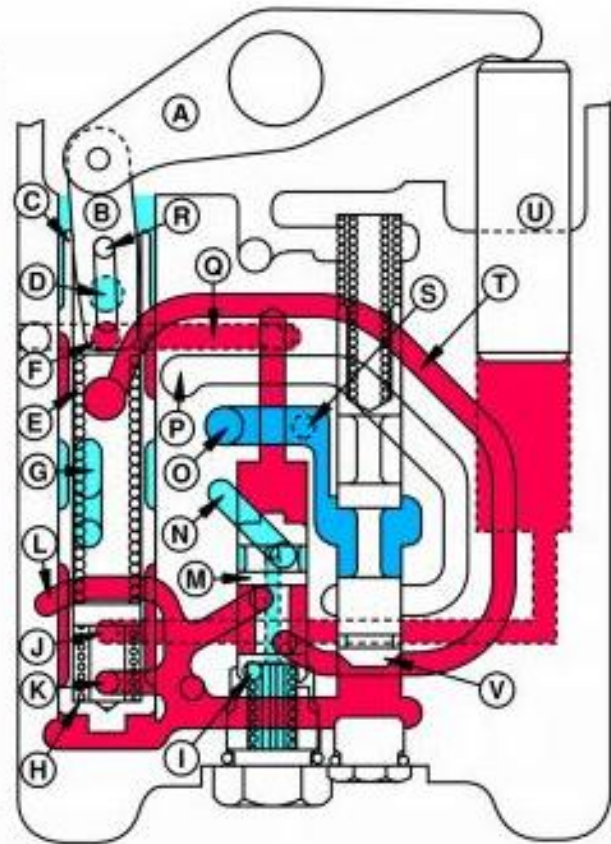
PTO Clutch (Engaged)

LEGEND:

- A Clutch Disks
- B Clutch Hub
- C Input Shaft
- D Separator Plate



RWC22751

*Clutch Engaged***LEGEND:**

- A Control Arm
- B Slotted Link
- C Clutch Valve
- D To PTO Brake
- E Secondary Modulation Spring
- F Transmission System Pressure
- G Sump Passage
- H Primary Modulation Spring
- I EOV Brake Passage
- J Lock Piston Passage
- K Oil Passage
- L To Clutch Engagement Piston
- M Engagement Override Valve
- N Sump Passage
- O From Transmission Lube
- P Clutch Engagement Lube (DR)
- Q Drilled Passage to EOV
- R Link-to-Valve Pin
- S Lube Oil to Bearings and Seals
- T Clutch Valve-to-EOV Passage
- U Lock Piston
- V Clutch Lube Control Valve
- W Vent to Transmission



Thank you very much
for your reading.
Please click here
to get more information.