

John Deere 9650 STS (-695500) , 9750 STS (-695600) Combines Service Repair Technical Manual (TM1901)

9650 STS Combines (000001-695500), 9750 STS Combines (000001-695600) Repair

REPAIR TECHNICAL MANUAL

9650 STS, 9750 STS

TM1901 08 OCT 13 (ENGLISH)

For complete service information also see:

9650 STS Combines (000001-695500), 9750
STS Combines (000001-695600) Diagnostic TM1902

PowerTech 8.1 L Diesel Engines Base Engine CTM86

Alternators and Starting Motors CTM77

Electronic Fuel Injection Systems CTM68

OEM Engine Accessories CTM67

PowerTech 6.8L
Diesel Engines (CTM67)
Systems with B

PDF



DOWNLOAD



John Deere Agriculture

Covers: 9650STS,695500),9750STS,695600)

Type: Service Manual

Language: English

Pages: 1376

Format: PDF

Features: Bookmarked, searchable, printable

Compatibility: Windows/Mac/Tablet/Mobile

This service manual contains important information for the maintenance, troubleshooting and servicing of the **John Deere 9650 STS (-695500) , 9750 STS (-695600) Combines Service Repair Technical Manual (TM1901)**

In this manual you will find detailed specifications, illustrations, schematics, diagrams and step-by-step procedures to properly service and diagnose the machine to the manufacturer's standards.

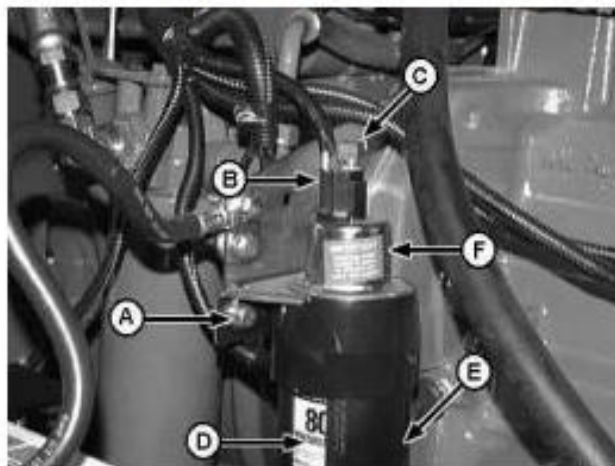
Contents:

- General Information
- Specifications
- Serial Number Location
- Engine Specifications
- Engine Diagnostics
- Engine Tests and Adjustments
- Engine Repair
- Power Train
- Transmission
- Axles
- Differential
- PTO
- Hydraulic System
- Electrical System
- Electrical Tests and Diagnostics
- Wiring Diagram / Schematic
- Ignition and Charging
- Steering
- Brakes
- Wheels
- Operator's Platform
- Body Panels
- Disassembly and Assembly
- Diagnostics, Tests and Adjustments
- Troubleshooting
- and much more...

Please note this manual is in **downloadable PDF format only**. If you have any questions about this product or would like to request sample pages, please contact us and reference the product name or SKU.

[3] - Install new can and tighten canister.

Remove and Install Cold Weather Starting Aid



LEGEND:

A	Cap Screw (2 used)
B	Connector
C	Injector Line
D	Can
E	Canister
F	Body

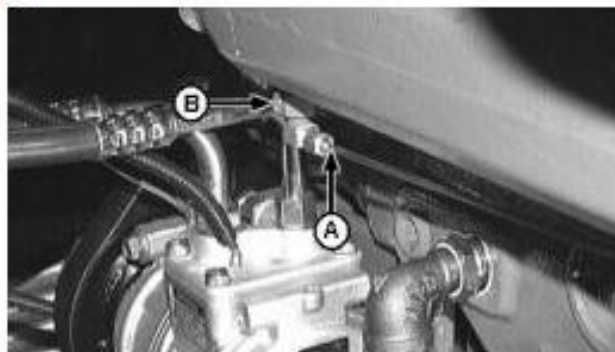
Cold Weather Starting Aid

[1] - Remove parts (A–F).

[2] - Inspect parts for wear or damage. Replace if necessary.

[3] - Install parts (A–F).

[4] -



LEGEND:

A	Injector Line
B	Nozzle

Spray Nozzle and Line

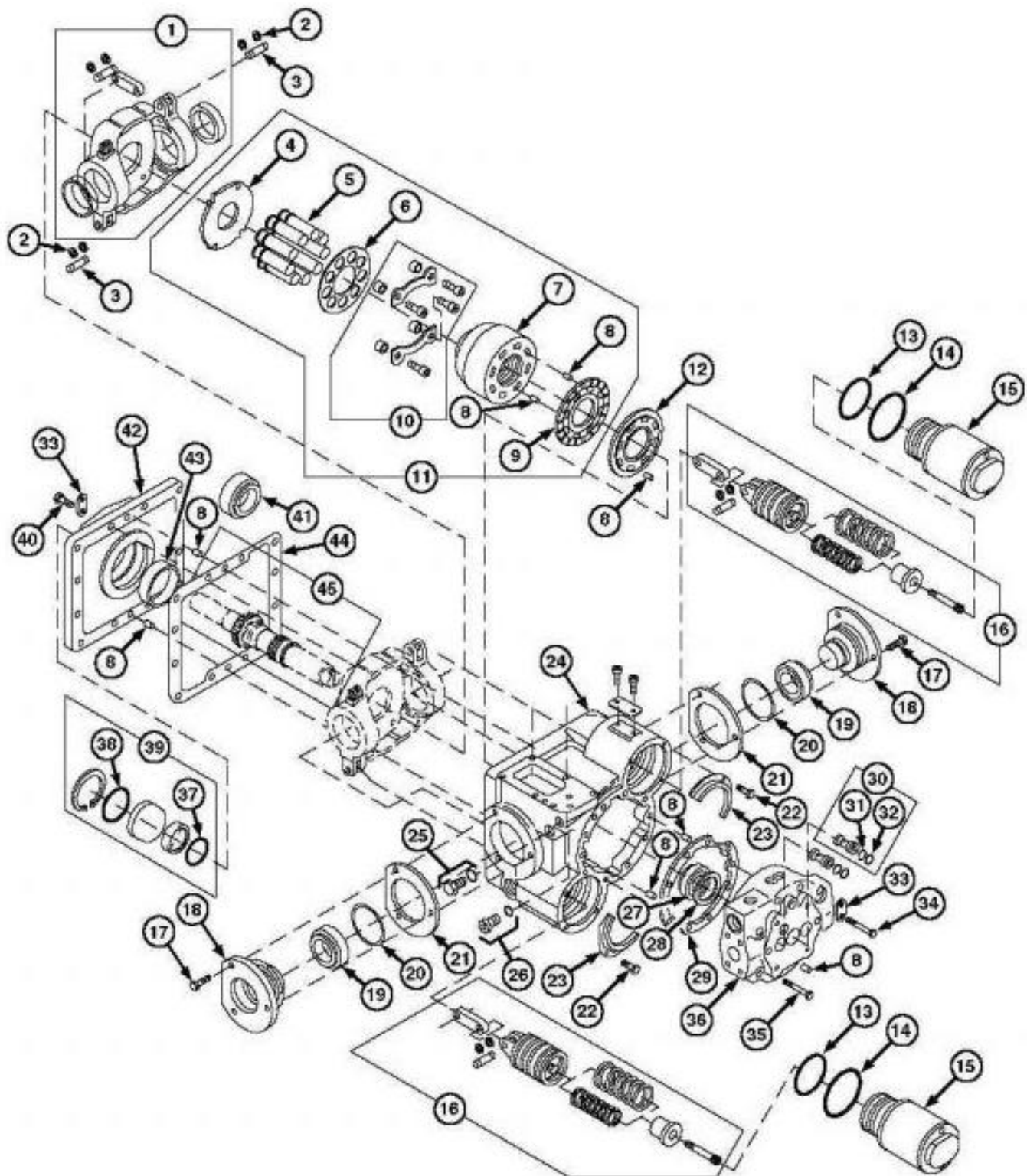
If starting aid does not operate properly, disconnect line (A) and remove spray nozzle (B) from manifold.

[5] - Clean nozzle and install nozzle and line.

IMPORTANT:

Be sure nozzle is secure in adapter. If nozzle is loose, engine may be damaged. However, over tightening will break nozzle.

Assemble Drive Pump



Drive Pump

LEGEND:

- | | |
|---|-----------------------------|
| 1 | Swashplate Assembly |
| 2 | Retaining Ring (8 used) |
| 3 | Pin (4 used) |
| 4 | Thrust Plate |
| 5 | Piston and Slipper Assembly |
| 6 | Slipper Retaining Plate |
| 7 | Cylinder Barrel |



Thank you very much
for your reading.
Please click here
to get more information.