

John Deere R160, R200, R240, R280, R310 Hay&Forage Rotary Disk Mower Technnical Service Manual (TM134119)

200D and 200DLC Excavator Repair

REPAIR TECHNICAL MANUAL

200D, 200DLC

TM10079 03MAR14 (ENGLISH)

For complete service information also see:

JDLink (MTG) Technical Manual	TM114519
200D and 200DLC Excavator Diagnostic	TM10076
Alternators and Starting Motors	CTM77
PowerTech E 4.5 and 6.8L Diesel Engines	
Level 16 Electronic Fuel System With Denso HPCR	CTM502
Super Caddy Oil Cleanup Procedure	CTM310
PowerTech 4.5L Tier 1/Stage I, Tier 3/Stage IIIA, Tier III, (Base Engine)	
JDG10274 Ultrasonic Under Measurement Gauge	

PDF



DOWNLOAD



John Deere Construction and Forestry

Covers: R280,R310,R240,R200,R160

Type: Service Manual

Language: English

Pages: 126

Format: PDF

Features: Bookmarked, searchable, printable

Compatibility: Windows/Mac/Tablet/Mobile

This service manual contains important information for the maintenance, troubleshooting and servicing of the **John Deere R160, R200, R240, R280, R310 Hay&Forage Rotary Disk Mower Technnical Service Manual (TM134119)**

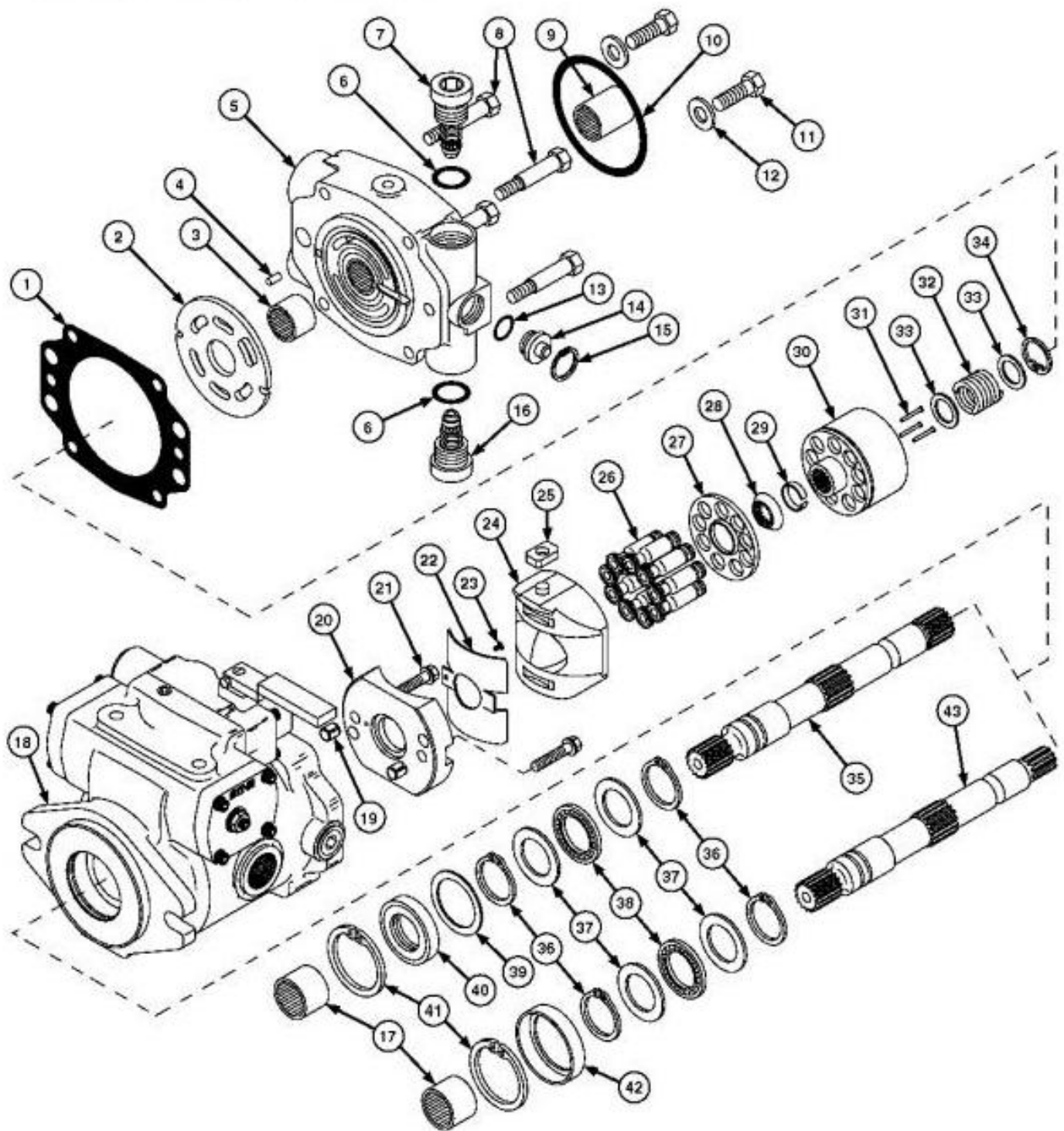
In this manual you will find detailed specifications, illustrations, schematics, diagrams and step-by-step procedures to properly service and diagnose the machine to the manufacturer's standards.

Contents:

- General Information
- Specifications
- Serial Number Location
- Engine Specifications
- Engine Diagnostics
- Engine Tests and Adjustments
- Engine Repair
- Power Train
- Transmission
- Axles
- Differential
- PTO
- Hydraulic System
- Electrical System
- Electrical Tests and Diagnostics
- Wiring Diagram / Schematic
- Ignition and Charging
- Steering
- Brakes
- Wheels
- Operator's Platform
- Body Panels
- Disassembly and Assembly
- Diagnostics, Tests and Adjustments
- Troubleshooting
- and much more...

Please note this manual is in **downloadable PDF format only**. If you have any questions about this product or would like to request sample pages, please contact us and reference the product name or SKU.

Inspect Ground Drive Pump



Ground Drive Pump-Exploded View

LEGEND:

1	Gasket
2	Valve Plate
3	Needle Bearing
4	Spring Pin
5	Backplate
6	O-Ring (2 used)
7	Relief Valve (Port C)
8	Cap Screws (4 used)
9	Coupler
10	O-Ring
11	Cap Screw (2 used)

To remove rocker switches (A):

- a. Pry off switch cap (B) being careful not to damage cap or console cover.
- b. Grasp switch (A) with a pliers. Firmly pull switch straight up and out of receptacle (C).

[2] - To install new switch:

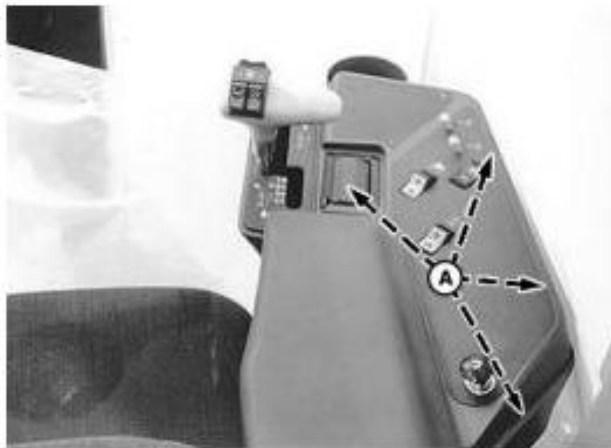
- a. Align grooves in switch body with ribs in receptacle wall.
- b. Firmly push switch straight down into receptacle.

Replace Armrest Console Toggle Switches

[1] -

→NOTE:

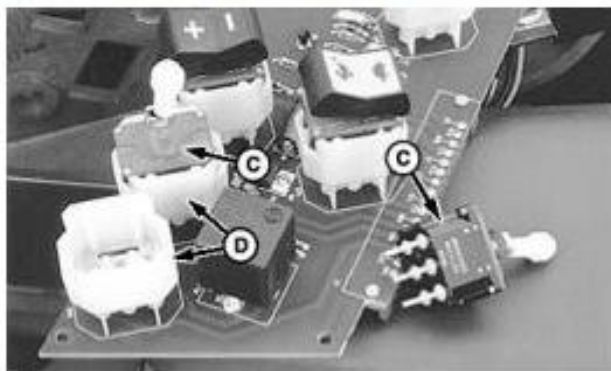
Four screws (A) fasten the armrest console panel to its base: three are located on the right-hand side of the console, the other is under the ashtray.



Console Screws



Circuit Board Mounting Screws



Toggle Switches and Receptacle

LEGEND:

A	Screws
B	Screws
C	Toggle Switches
D	Receptacles



Thank you very much
for your reading.
Please click here
to get more information.