

# John Deere Tractors 6105R, 6115R, 6125R, 6130R (Worldwide) Service Repair Technical Manual (TM404519)



**Covers:** 6105R,6115R,6125R,6130R

**Type:** Service Manual

**Language:** English

**Pages:** 1916

**Format:** PDF

**Features:** Bookmarked, searchable, printable

**Compatibility:** Windows/Mac/Tablet/Mobile

This service manual contains important information for the maintenance, troubleshooting and servicing of the **John Deere Tractors 6105R, 6115R, 6125R, 6130R (Worldwide) Service Repair Technical Manual (TM404519)**

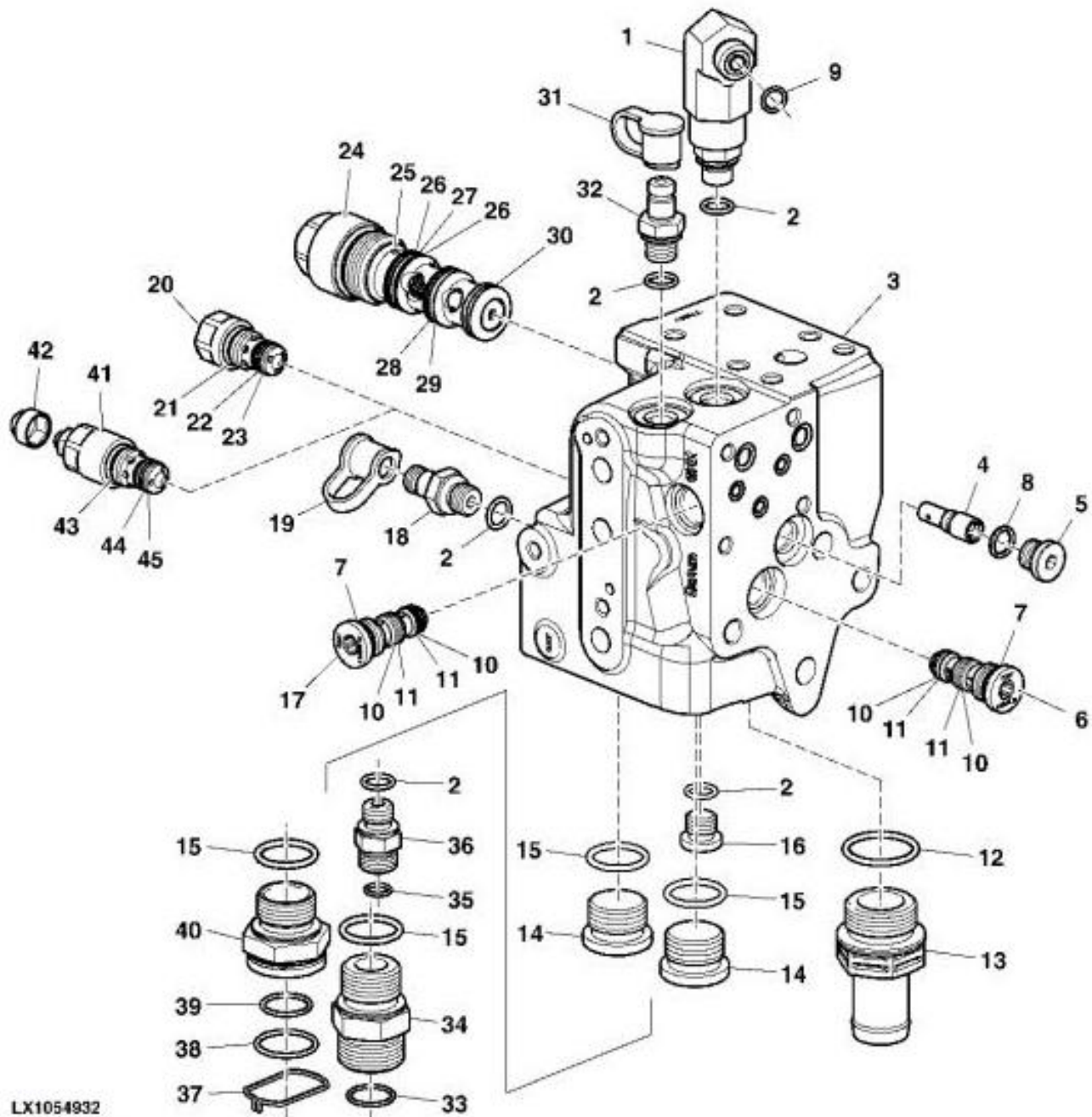
In this manual you will find detailed specifications, illustrations, schematics, diagrams and step-by-step procedures to properly service and diagnose the machine to the manufacturer's standards.

**Contents:**

- General Information
- Specifications
- Serial Number Location
- Engine Specifications
- Engine Diagnostics
- Engine Tests and Adjustments
- Engine Repair
- Power Train
- Transmission
- Axles
- Differential
- PTO
- Hydraulic System
- Electrical System
- Electrical Tests and Diagnostics
- Wiring Diagram / Schematic
- Ignition and Charging
- Steering
- Brakes
- Wheels
- Operator's Platform
- Body Panels
- Disassembly and Assembly
- Diagnostics, Tests and Adjustments
- Troubleshooting
- and much more...

Please note this manual is in **downloadable PDF format only**. If you have any questions about this product or would like to request sample pages, please contact us and reference the product name or SKU.

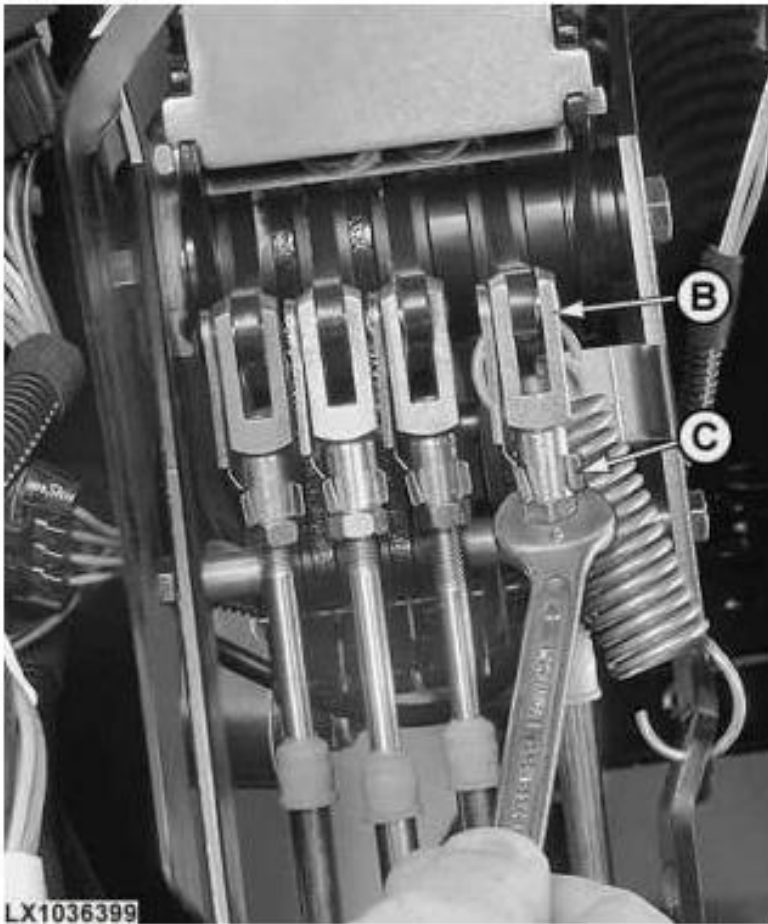
## Reconditioning the Priority 3 Control Block



LX1054932

### LEGEND:

- |    |   |
|----|---|
| 1  | Fitting (LS oil pressure to hydraulic pump)           |
| 2  | O-ring  |
| 3  | Housing   |
| 4  | Flow control valve (LS relief to reservoir)           |
| 5  | Plug  |
| 6  | Shuttle valve (LS pressure, priority circuit 1/2 - 3) |
| 7  | Seal ring   |
| 8  | Seal ring   |
| 9  | O-ring  |
| 10 | Back-up ring  |
| 11 | Seal ring   |

**LEGEND:**

- |   |                   |
|---|-------------------|
| A | Range shift lever |
| B | Bowden cable      |
| C | Retaining clip    |

Move the range shift lever (A) to neutral position. From there, the shift lever automatically moves to the shift position C-D.

**[2]** - Disengage the Bowden cable (B) of the park lock.

**→NOTE:**

**Loosen the lock nut on the yoke before disengaging the Bowden cable.**



Thank you very much  
for your reading.  
Please click here  
to get more information.