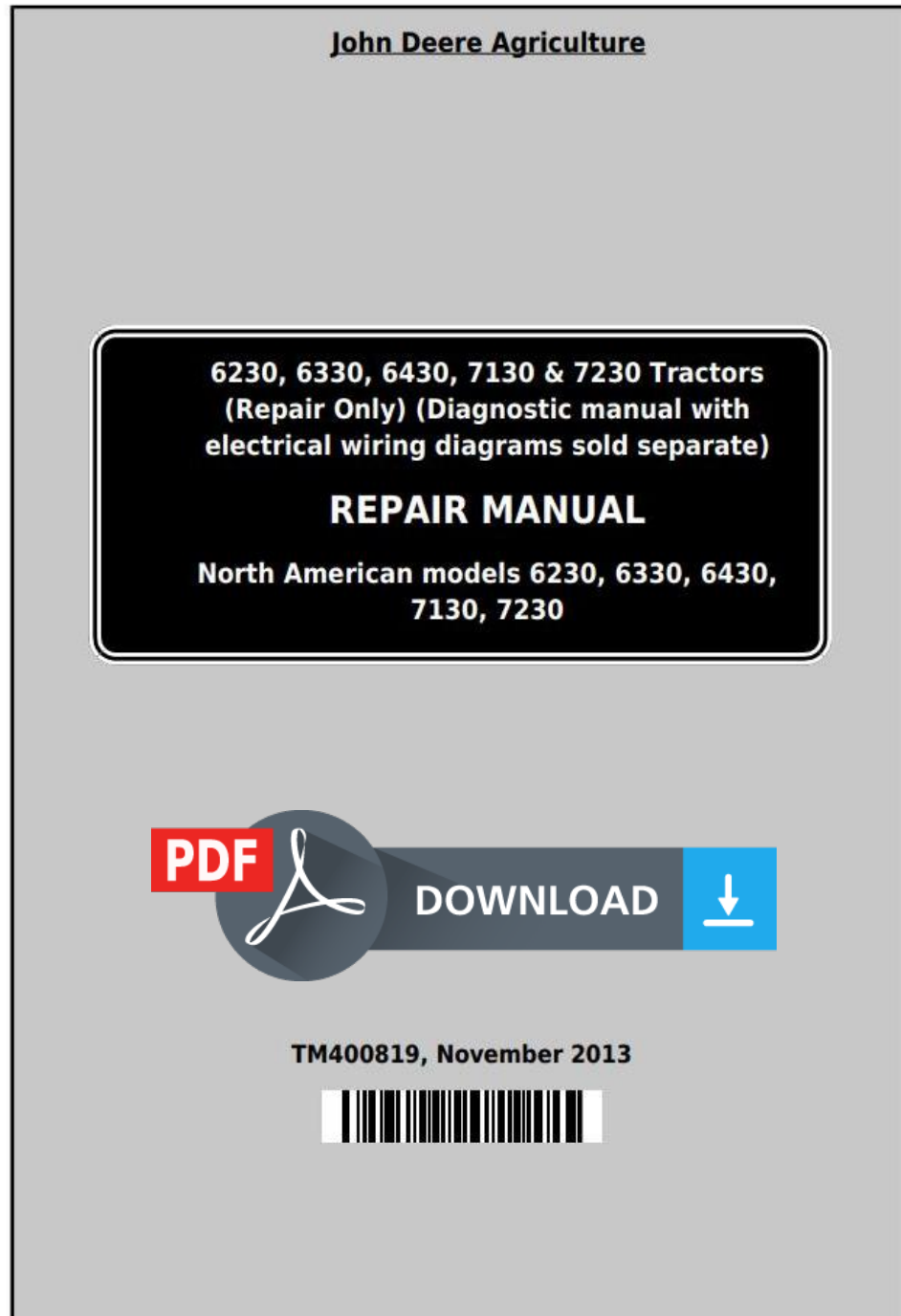


# John Deere Tractors 6230, 6330, 6430, 6530, 6630, 7130, 7230 (USA, Canada) Service Repair Manual TM400819



**Covers:** 6230,6330,6430,6530,6630,7130,7230

**Type:** Service Manual

**Language:** English

**Pages:** 1887

**Format:** PDF

**Features:** Bookmarked, searchable, printable

**Compatibility:** Windows/Mac/Tablet/Mobile

This service manual contains important information for the maintenance, troubleshooting and servicing of the **John Deere Tractors 6230, 6330, 6430, 6530, 6630, 7130, 7230 (USA, Canada) Service Repair Manual TM400819**

In this manual you will find detailed specifications, illustrations, schematics, diagrams and step-by-step procedures to properly service and diagnose the machine to the manufacturer's standards.

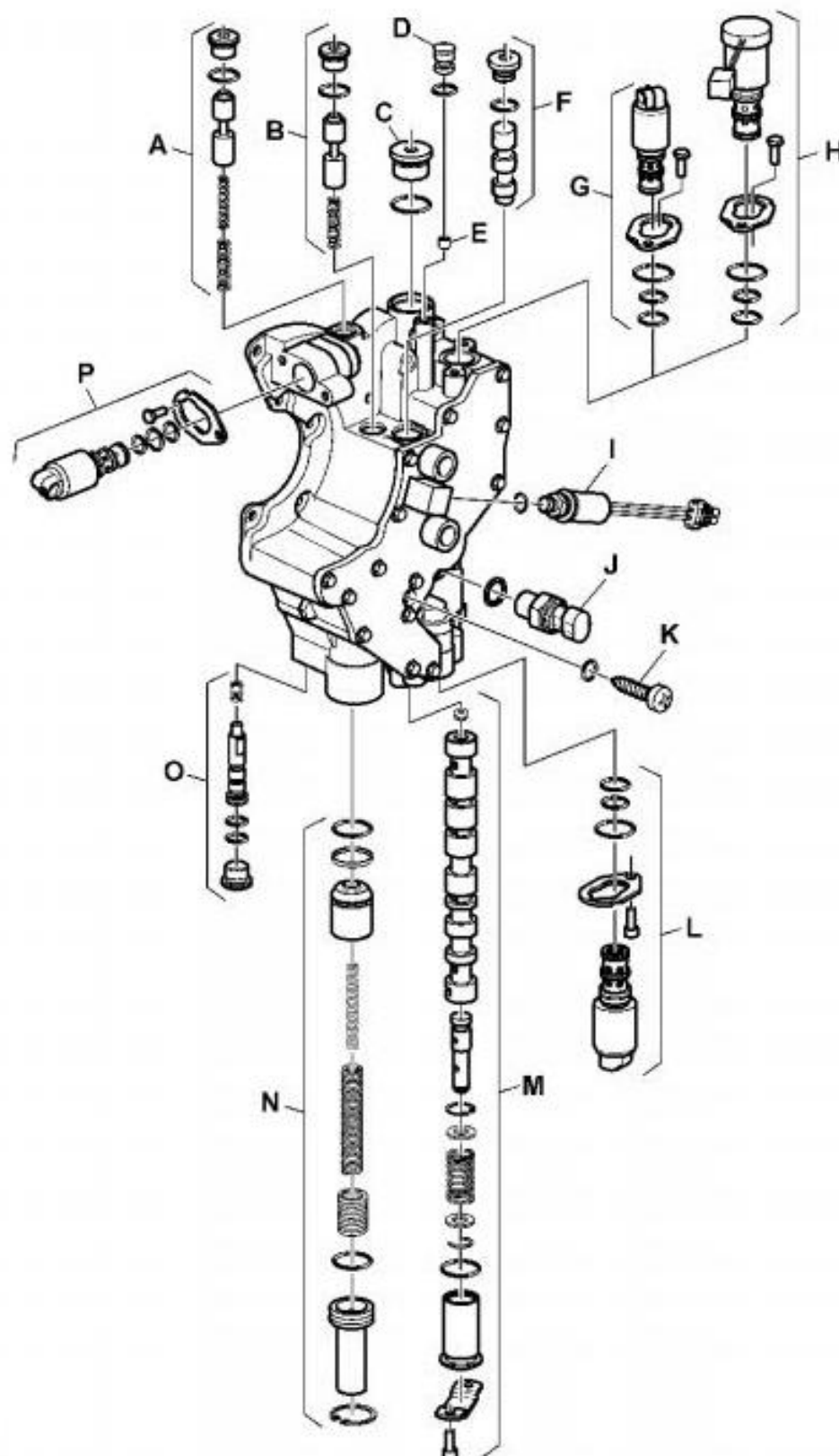
**Contents:**

- General Information
- Specifications
- Serial Number Location
- Engine Specifications
- Engine Diagnostics
- Engine Tests and Adjustments
- Engine Repair
- Power Train
- Transmission
- Axles
- Differential
- PTO
- Hydraulic System
- Electrical System
- Electrical Tests and Diagnostics
- Wiring Diagram / Schematic
- Ignition and Charging
- Steering
- Brakes
- Wheels
- Operator's Platform
- Body Panels
- Disassembly and Assembly
- Diagnostics, Tests and Adjustments
- Troubleshooting
- and much more...

Please note this manual is in **downloadable PDF format only**. If you have any questions about this product or would like to request sample pages, please contact us and reference the product name or SKU.

# Recondition Valves and Components with Electrical Reverser Control

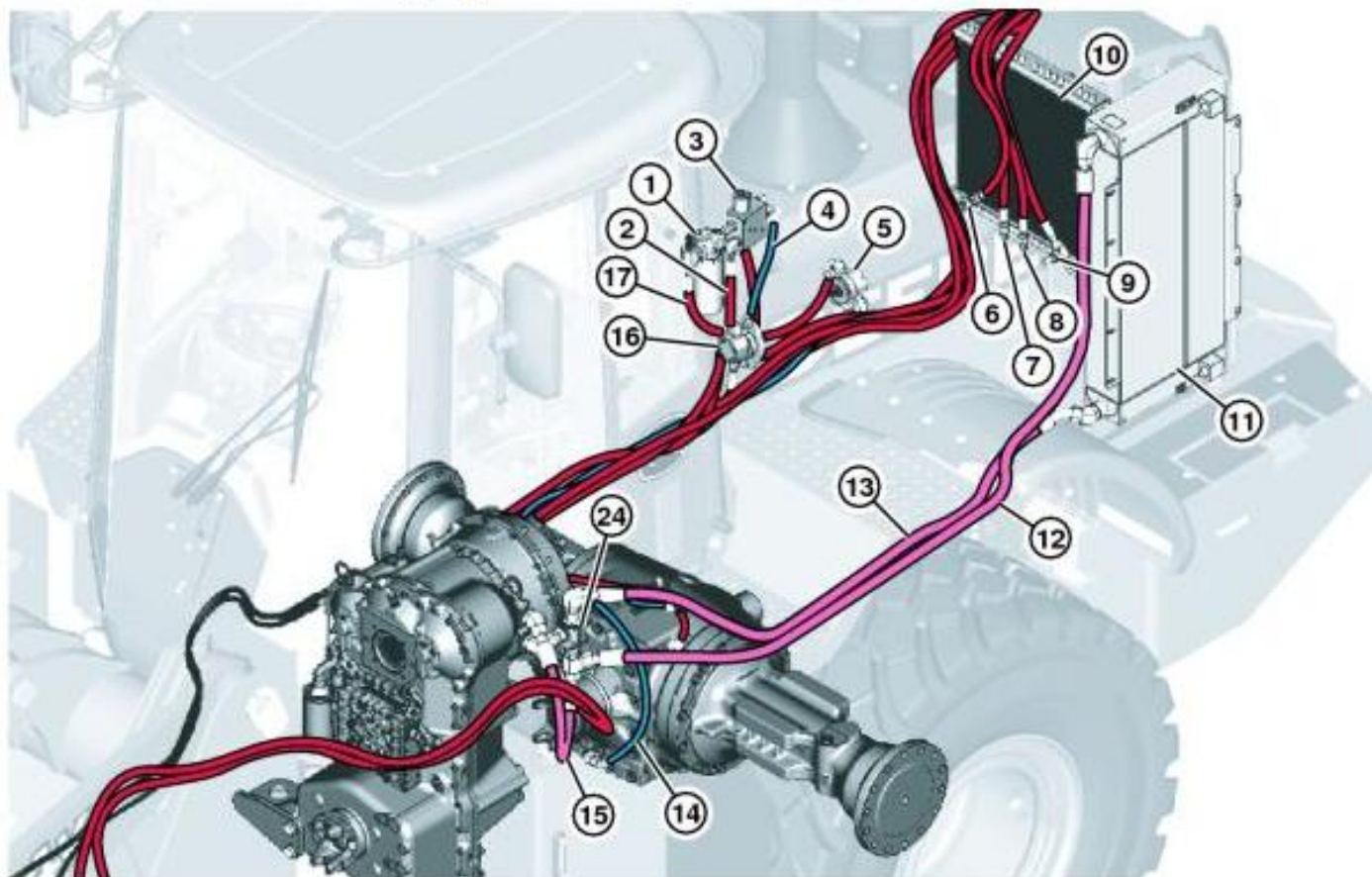
[1] -



LX1048138

## LEGEND:

## Power Train Cooling System Component Location



TX1145754

**Power Train Cooling System—Rear**

**LEGEND:**



Thank you very much  
for your reading.  
Please click here  
to get more information.